



Set Power Options

Guide

December 16, 2020

Copyright Agreement

The purchase and use of all Software and Services is subject to the Agreement as defined in Kaseya's "Click-Accept" EULATOS as updated from time to time by Kaseya at <http://www.kaseya.com/legal.aspx>. If Customer does not agree with the Agreement, please do not install, use or purchase any Software and Services from Kaseya as continued use of the Software or Services indicates Customer's acceptance of the Agreement."

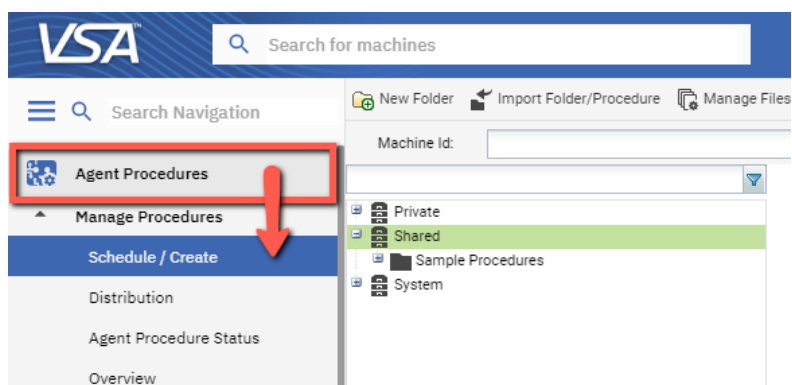
Set Power Options

The following Agent Procedure intended to provide an example how to automate the management of power settings.

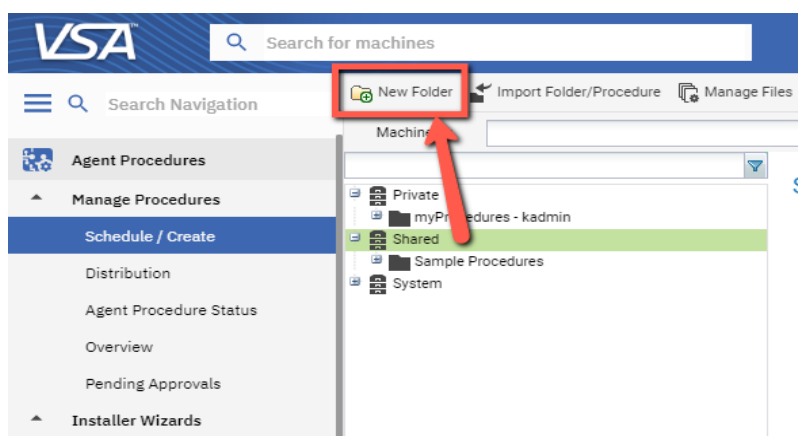
Note: the settings made using a GPO take precedence over settings made using the Agent procedure or manually.

Installation Instructions

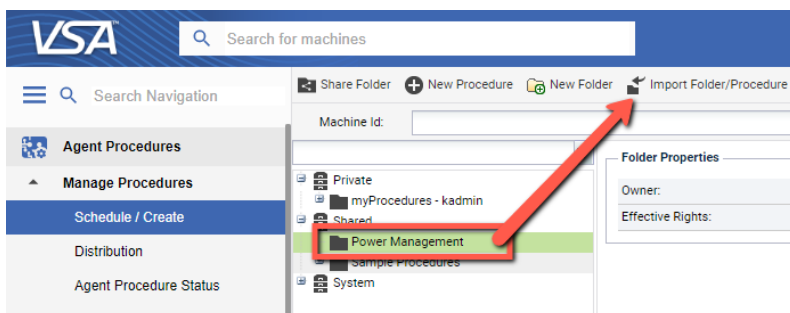
1. Navigate to **Agent Procedures** → **Manage Procedures** → **Schedule/Create**



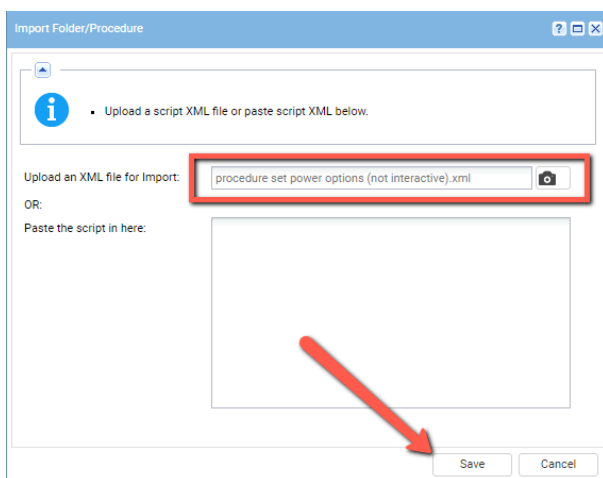
2. Click on the **Shared** cabinet and choose a folder where you are planning to store procedures related to power management for instance **Power Management**. You may also create such a folder by clicking the **New Folder** button.



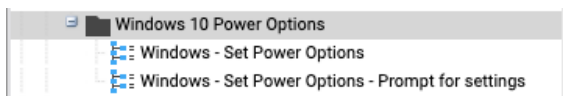
3. Select the folder and click the **Import Folder/Procedure**



Click the Camera button, select the Procedure Folder Windows 10 Power Options.xml file and click the **Save** button.



4. The Agent Procedures will be uploaded so you can schedule it or start manually.



Using The Agent Procedures

Windows – Set Power Options

The “Windows – Set Power Options” Agent Procedure requires settings the appropriate parameter values.

1. System unattended sleep timeout Plugged in

Set Power Options

```

4 // Unattended sleep timeout in minutes. 0 - Never
5 getVariable('Constant Value', "0", "SleepOnPower", "All Operating Systems", "Halt on Fail")
6 getVariable('Constant Value', "2", "SleepOnBattery", "All Operating Systems", "Halt on Fail")
7 // Monitor timeout in minutes. 0 - Never
8 getVariable('Constant Value', "0", "DisplayOnPower", "All Operating Systems", "Halt on Fail")
9 getVariable('Constant Value', "5", "DisplayOnBattery", "All Operating Systems", "Halt on Fail")
10 // Standby timeout in minutes. 0 - Never
11 getVariable('Constant Value', "0", "StandbyOnPower", "All Operating Systems", "Halt on Fail")
12 getVariable('Constant Value', "15", "StandbyOnBattery", "All Operating Systems", "Halt on Fail")
13 // HDD timeout in minutes. 0 - Never
14 getVariable('Constant Value', "0", "HDDOnPower", "All Operating Systems", "Halt on Fail")
15 getVariable('Constant Value', "10", "HDDOnBattery", "All Operating Systems", "Halt on Fail")
16 // Hibernate timeout in minutes. 0 - Never
17 getVariable('Constant Value', "0", "HibernateOnPower", "All Operating Systems", "Halt on Fail")
18 getVariable('Constant Value', "0", "HibernateOnBattery", "All Operating Systems", "Halt on Fail")
19 // Lid close actions: 0 - Do nothing; 1 - Sleep; 2 - Hibernate; 3 - Shut down
20 getVariable('Constant Value', "0", "LidCloseOnPower", "All Operating Systems", "Halt on Fail")
21 getVariable('Constant Value', "1", "LidCloseOnBattery", "All Operating Systems", "Halt on Fail")
22 // Power button actions: 0 - Do nothing; 1 - Sleep; 2 - Hibernate; 3 - Shut down
23 getVariable('Constant Value', "3", "PowerButtonOnPower", "All Operating Systems", "Halt on Fail")
24 getVariable('Constant Value', "3", "PowerButtonOnBattery", "All Operating Systems", "Halt on Fail")

```

2. System unattended sleep timeout On battery

```

4 // Unattended sleep timeout in minutes. 0 - Never
5 getVariable ("Constant Value", "0", "SleepOnPower", "All Operating Systems", "Halt on Fail")
6 getVariable ("Constant Value", "24", "SleepOnBattery", "All Operating Systems", "Halt on Fail")
7 // Monitor timeout in minutes. 0 - Never
8 getVariable ("Constant Value", "0", "DisplayOnPower", "All Operating Systems", "Halt on Fail")
9 getVariable ("Constant Value", "5", "DisplayOnBattery", "All Operating Systems", "Halt on Fail")
10 // Standby timeout in minutes. 0 - Never
11 getVariable ("Constant Value", "0", "StandbyOnPower", "All Operating Systems", "Halt on Fail")
12 getVariable ("Constant Value", "15", "StandbyOnBattery", "All Operating Systems", "Halt on Fail")
13 // HDD timeout in minutes. 0 - Never
14 getVariable ("Constant Value", "0", "HDDOnPower", "All Operating Systems", "Halt on Fail")
15 getVariable ("Constant Value", "10", "HDDOnBattery", "All Operating Systems", "Halt on Fail")
16 // Hibernate timeout in minutes. 0 - Never
17 getVariable ("Constant Value", "0", "HibernateOnPower", "All Operating Systems", "Halt on Fail")
18 getVariable ("Constant Value", "0", "HibernateOnBattery", "All Operating Systems", "Halt on Fail")
19 // Lid close actions: 0 - Do nothing; 1 - Sleep; 2 - Hibernate; 3 - Shut down
20 getVariable ("Constant Value", "0", "LidCloseOnPower", "All Operating Systems", "Halt on Fail")
21 getVariable ("Constant Value", "1", "LidCloseOnBattery", "All Operating Systems", "Halt on Fail")
22 // Power button actions: 0 - Do nothing; 1 - Sleep; 2 - Hibernate; 3 - Shut down
23 getVariable ("Constant Value", "3", "PowerButtonOnPower", "All Operating Systems", "Halt on Fail")
24 getVariable ("Constant Value", "3", "PowerButtonOnBattery", "All Operating Systems", "Halt on Fail")

```

3. Display timeout Plugged in

```

4 // Unattended sleep timeout in minutes. 0 - Never
5 getVariable("Constant Value", "0", "SleepOnPower", "All Operating Systems", "Halt on Fail")
6 getVariable("Constant Value", "2", "SleepOnBattery", "All Operating Systems", "Halt on Fail")
7 // Monitor timeout in minutes. 0 - Never
8 getVariable("Constant Value", "0", "DisplayOnPower", "All Operating Systems", "Halt on Fail")
9 getVariable("Constant Value", "5", "DisplayOnBattery", "All Operating Systems", "Halt on Fail")
10 // Standby timeout in minutes. 0 - Never
11 getVariable("Constant Value", "0", "StandbyOnPower", "All Operating Systems", "Halt on Fail")
12 getVariable("Constant Value", "15", "StandbyOnBattery", "All Operating Systems", "Halt on Fail")
13 // HDD timeout in minutes. 0 - Never
14 getVariable("Constant Value", "0", "HDDOnPower", "All Operating Systems", "Halt on Fail")
15 getVariable("Constant Value", "10", "HDDOnBattery", "All Operating Systems", "Halt on Fail")
16 // Hibernate timeout in minutes. 0 - Never
17 getVariable("Constant Value", "0", "HibernateOnPower", "All Operating Systems", "Halt on Fail")
18 getVariable("Constant Value", "0", "HibernateOnBattery", "All Operating Systems", "Halt on Fail")
19 // Lid close actions: 0 - Do nothing; 1 - Sleep; 2 - Hibernate; 3 - Shut down
20 getVariable("Constant Value", "0", "LidCloseOnPower", "All Operating Systems", "Halt on Fail")
21 getVariable("Constant Value", "1", "LidCloseOnBattery", "All Operating Systems", "Halt on Fail")
22 // Power button actions: 0 - Do nothing; 1 - Sleep; 2 - Hibernate; 3 - Shut down
23 getVariable("Constant Value", "3", "PowerButtonOnPower", "All Operating Systems", "Halt on Fail")
24 getVariable("Constant Value", "3", "PowerButtonOnBattery", "All Operating Systems", "Halt on Fail")

```

4. Display timeout On battery

Set Power Options

```

4 // Unattended sleep timeout in minutes. 0 - Never
5 getVariable ("Constant Value", "0", "SleepOnPower", "All Operating Systems", "Halt on Fail")
6 getVariable ("Constant Value", "2", "SleepOnBattery", "All Operating Systems", "Halt on Fail")
7 // Monitor time in minutes. 0 - Never
8 getVariable ("Constant Value", "0", "DisplayOnPower", "All Operating Systems", "Halt on Fail")
9 getVariable ("Constant Value", "15", "DisplayOnBattery", "All Operating Systems", "Halt on Fail")
10 // Standby timeout in minutes. 0 - Never
11 getVariable ("Constant Value", "0", "StandbyOnPower", "All Operating Systems", "Halt on Fail")
12 getVariable ("Constant Value", "15", "StandbyOnBattery", "All Operating Systems", "Halt on Fail")
13 // HDD timeout in minutes. 0 - Never
14 getVariable ("Constant Value", "0", "HDDOnPower", "All Operating Systems", "Halt on Fail")
15 getVariable ("Constant Value", "10", "HDDOnBattery", "All Operating Systems", "Halt on Fail")
16 // Hibernate timeout in minutes. 0 - Never
17 getVariable ("Constant Value", "0", "HibernateOnPower", "All Operating Systems", "Halt on Fail")
18 getVariable ("Constant Value", "0", "HibernateOnBattery", "All Operating Systems", "Halt on Fail")
19 // Lid close actions: 0 - Do nothing; 1 - Sleep; 2 - Hibernate; 3 - Shut down
20 getVariable ("Constant Value", "0", "LidCloseOnPower", "All Operating Systems", "Halt on Fail")
21 getVariable ("Constant Value", "1", "LidCloseOnBattery", "All Operating Systems", "Halt on Fail")
22 // Power button actions: 0 - Do nothing; 1 - Sleep; 2 - Hibernate; 3 - Shut down
23 getVariable ("Constant Value", "3", "PowerButtonOnPower", "All Operating Systems", "Halt on Fail")
24 getVariable ("Constant Value", "3", "PowerButtonOnBattery", "All Operating Systems", "Halt on Fail")

```

5. Standby timeout Plugged in

```

4 // Unattended sleep timeout in minutes. 0 - Never
5 getVariable ("Constant Value", "0", "SleepOnPower", "All Operating Systems", "Halt on Fail")
6 getVariable ("Constant Value", "2", "SleepOnBattery", "All Operating Systems", "Halt on Fail")
7 // Monitor timeout in minutes. 0 - Never
8 getVariable ("Constant Value", "0", "DisplayOnPower", "All Operating Systems", "Halt on Fail")
9 getVariable ("Constant Value", "5", "DisplayOnBattery", "All Operating Systems", "Halt on Fail")
10 // Standby timeout in minutes. 0 - Never
11 getVariable ("Constant Value", "0", "StandbyOnPower", "All Operating Systems", "Halt on Fail")
12 getVariable ("Constant Value", "15", "StandbyOnBattery", "All Operating Systems", "Halt on Fail")
13 // HDD timeout in minutes. 0 - Never
14 getVariable ("Constant Value", "0", "HDDOnPower", "All Operating Systems", "Halt on Fail")
15 getVariable ("Constant Value", "10", "HDDOnBattery", "All Operating Systems", "Halt on Fail")
16 // Hibernate timeout in minutes. 0 - Never
17 getVariable ("Constant Value", "0", "HibernateOnPower", "All Operating Systems", "Halt on Fail")
18 getVariable ("Constant Value", "0", "HibernateOnBattery", "All Operating Systems", "Halt on Fail")
19 // Lid close actions: 0 - Do nothing; 1 - Sleep; 2 - Hibernate; 3 - Shut down
20 getVariable ("Constant Value", "0", "LidCloseOnPower", "All Operating Systems", "Halt on Fail")
21 getVariable ("Constant Value", "1", "LidCloseOnBattery", "All Operating Systems", "Halt on Fail")
22 // Power button actions: 0 - Do nothing; 1 - Sleep; 2 - Hibernate; 3 - Shut down
23 getVariable ("Constant Value", "3", "PowerButtonOnPower", "All Operating Systems", "Halt on Fail")
24 getVariable ("Constant Value", "3", "PowerButtonOnBattery", "All Operating Systems", "Halt on Fail")

```

6. Standby timeout On battery

```

4 // Unattended sleep timeout in minutes. 0 - Never
5 getVariable("Constant Value", "0", "SleepOnPower", "All Operating Systems", "Halt on Fail")
6 getVariable("Constant Value", "2", "SleepOnBattery", "All Operating Systems", "Halt on Fail")
7 // Monitor timeout in minutes. 0 - Never
8 getVariable("Constant Value", "0", "DisplayOnPower", "All Operating Systems", "Halt on Fail")
9 getVariable("Constant Value", "5", "DisplayOnBattery", "All Operating Systems", "Halt on Fail")
10 // Standby timeout in minutes. 0 - Never
11 getVariable("Constant Value", "0", "StandbyOnPower", "All Operating Systems", "Halt on Fail")
12 getVariable("Constant Value", "15", "StandbyOnBattery", "All Operating Systems", "Halt on Fail")
13 // HDO timeout in minutes. 0 - Never
14 getVariable("Constant Value", "0", "HDDOnPower", "All Operating Systems", "Halt on Fail")
15 getVariable("Constant Value", "10", "HDDOnBattery", "All Operating Systems", "Halt on Fail")
16 // Hibernate timeout in minutes. 0 - Never
17 getVariable("Constant Value", "0", "HibernateOnPower", "All Operating Systems", "Halt on Fail")
18 getVariable("Constant Value", "0", "HibernateOnBattery", "All Operating Systems", "Halt on Fail")
19 // Lid close actions: 0- Do nothing; 1- Sleep; 2- Hibernate; 3- Shut down
20 getVariable("Constant Value", "0", "LidCloseOnPower", "All Operating Systems", "Halt on Fail")
21 getVariable("Constant Value", "1", "LidCloseOnBattery", "All Operating Systems", "Halt on Fail")
22 // Power button actions: 0- Do nothing; 1- Sleep; 2- Hibernate; 3- Shut down
23 getVariable("Constant Value", "3", "PowerButtonOnPower", "All Operating Systems", "Halt on Fail")
24 getVariable("Constant Value", "3", "PowerButtonOnBattery", "All Operating Systems", "Halt on Fail")

```

7. Hard disk timeout Plugged in

Set Power Options

```

4 // Unattended sleep timeout in minutes. 0 - Never
5 getVariable("Constant Value", "0", "SleepOnPower", "All Operating Systems", "Halt on Fail")
6 getVariable("Constant Value", "2", "SleepOnBattery", "All Operating Systems", "Halt on Fail")
7 // Monitor timeout in minutes. 0 - Never
8 getVariable("Constant Value", "0", "DisplayOnPower", "All Operating Systems", "Halt on Fail")
9 getVariable("Constant Value", "5", "DisplayOnBattery", "All Operating Systems", "Halt on Fail")
10 // Standby timeout in minutes. 0 - Never
11 getVariable("Constant Value", "0", "StandbyOnPower", "All Operating Systems", "Halt on Fail")
12 getVariable("Constant Value", "15", "StandbyOnBattery", "All Operating Systems", "Halt on Fail")
13 // HDD timeout in minutes. 0 - Never
14 getVariable("Constant Value", "0", "HDDOnPower", "All Operating Systems", "Halt on Fail")
15 getVariable("Constant Value", "10", "HDDOnBattery", "All Operating Systems", "Halt on Fail")
16 // Hibernate timeout in minutes. 0 - Never
17 getVariable("Constant Value", "0", "HibernateOnPower", "All Operating Systems", "Halt on Fail")
18 getVariable("Constant Value", "0", "HibernateOnBattery", "All Operating Systems", "Halt on Fail")
19 // Lid close actions: 0 - Do nothing; 1 - Sleep; 2 - Hibernate; 3 - Shut down
20 getVariable("Constant Value", "0", "LidCloseOnPower", "All Operating Systems", "Halt on Fail")
21 getVariable("Constant Value", "1", "LidCloseOnBattery", "All Operating Systems", "Halt on Fail")
22 // Power button actions: 0 - Do nothing; 1 - Sleep; 2 - Hibernate; 3 - Shut down
23 getVariable("Constant Value", "3", "PowerButtonOnPower", "All Operating Systems", "Halt on Fail")
24 getVariable("Constant Value", "3", "PowerButtonOnBattery", "All Operating Systems", "Halt on Fail")

```

8. Hard disk timeout On battery

```

4 // Unattended sleep timeout in minutes. 0 - Never
5 getVariable("Constant Value", "0", "SleepOnPower", "All Operating Systems", "Halt on Fail")
6 getVariable("Constant Value", "2", "SleepOnBattery", "All Operating Systems", "Halt on Fail")
7 // Monitor timeout in minutes. 0 - Never
8 getVariable("Constant Value", "0", "SleepOnPower", "All Operating Systems", "Halt on Fail")
9 getVariable("Constant Value", "5", "SleepOnBattery", "All Operating Systems", "Halt on Fail")
10 // Standby timeout in minutes. 0 - Never
11 getVariable("Constant Value", "0", "StandbyOnPower", "All Operating Systems", "Halt on Fail")
12 getVariable("Constant Value", "15", "StandbyOnBattery", "All Operating Systems", "Halt on Fail")
13 // HDD timeout in minutes. 0 - Never
14 getVariable("Constant Value", "0", "HDDOnPower", "All Operating Systems", "Halt on Fail")
15 getVariable("Constant Value", "10", "HDDOnBattery", "All Operating Systems", "Halt on Fail")
16 // Hibernate timeout in minutes. 0 - Never
17 getVariable("Constant Value", "0", "HibernateOnPower", "All Operating Systems", "Halt on Fail")
18 getVariable("Constant Value", "0", "HibernateOnBattery", "All Operating Systems", "Halt on Fail")
19 // Lid close actions: 0 - Do nothing; 1 - Sleep; 2 - Hibernate; 3 - Shut down
20 getVariable("Constant Value", "0", "LidCloseOnPower", "All Operating Systems", "Halt on Fail")
21 getVariable("Constant Value", "1", "LidCloseOnBattery", "All Operating Systems", "Halt on Fail")
22 // Power button actions: 0 - Do nothing; 1 - Sleep; 2 - Hibernate; 3 - Shut down
23 getVariable("Constant Value", "3", "PowerButtonOnPower", "All Operating Systems", "Halt on Fail")
24 getVariable("Constant Value", "3", "PowerButtonOnBattery", "All Operating Systems", "Halt on Fail")

```

9. Hibernate timeout Plugged in

```

4 // Unattended sleep timeout in minutes. 0 - Never
5 getVariable ("Constant Value", "0", "SleepOnPower", "All Operating Systems", "Halt on Fail")
6 getVariable ("Constant Value", "2", "SleepOnBattery", "All Operating Systems", "Halt on Fail")
7 // Monitor timeout in minutes. 0 - Never
8 getVariable ("Constant Value", "0", "DisplayOnPower", "All Operating Systems", "Halt on Fail")
9 getVariable ("Constant Value", "5", "DisplayOnBattery", "All Operating Systems", "Halt on Fail")
10 // Standby timeout in minutes. 0 - Never
11 getVariable ("Constant Value", "0", "StandbyOnPower", "All Operating Systems", "Halt on Fail")
12 getVariable ("Constant Value", "15", "StandbyOnBattery", "All Operating Systems", "Halt on Fail")
13 // HDD timeout in minutes. 0 - Never
14 getVariable ("Constant Value", "0", "HDDOnPower", "All Operating Systems", "Halt on Fail")
15 getVariable ("Constant Value", "10", "HDDOnBattery", "All Operating Systems", "Halt on Fail")
16 // Hibernate timeout in minutes. 0 - Never
17 getVariable ("Constant Value", "0", "HibernateOnPower", "All Operating Systems", "Halt on Fail")
18 getVariable ("Constant Value", "0", "HibernateOnBattery", "All Operating Systems", "Halt on Fail")
19 // Lid close actions: 0 - Do nothing; 1 - Sleep; 2 - Hibernate; 3 - Shut down
20 getVariable ("Constant Value", "0", "LidCloseOnPower", "All Operating Systems", "Halt on Fail")
21 getVariable ("Constant Value", "1", "LidCloseOnBattery", "All Operating Systems", "Halt on Fail")
22 // Power button actions: 0 - Do nothing; 1 - Sleep; 2 - Hibernate; 3 - Shut down
23 getVariable ("Constant Value", "3", "PowerButtonOnPower", "All Operating Systems", "Halt on Fail")
24 getVariable ("Constant Value", "3", "PowerButtonOnBattery", "All Operating Systems", "Halt on Fail")

```

10. Hibernate timeout On battery

Set Power Options

```

4 // Unattended sleep timeout in minutes. 0 - Never
5 getVariable("Constant Value", "0", "SleepOnPower", "All Operating Systems", "Halt on Fail")
6 getVariable("Constant Value", "2", "SleepOnBattery", "All Operating Systems", "Halt on Fail")
7 // Monitor timeout in minutes. 0 - Never
8 getVariable("Constant Value", "0", "DisplayOnPower", "All Operating Systems", "Halt on Fail")
9 getVariable("Constant Value", "5", "DisplayOnBattery", "All Operating Systems", "Halt on Fail")
10 // Standby timeout in minutes. 0 - Never
11 getVariable("Constant Value", "0", "StandbyOnPower", "All Operating Systems", "Halt on Fail")
12 getVariable("Constant Value", "15", "StandbyOnBattery", "All Operating Systems", "Halt on Fail")
13 // HDD timeout in minutes. 0 - Never
14 getVariable("Constant Value", "0", "HDDOnPower", "All Operating Systems", "Halt on Fail")
15 getVariable("Constant Value", "10", "HDDOnBattery", "All Operating Systems", "Halt on Fail")
16 // Hibernate timeout in minutes. 0 - Never
17 getVariable("Constant Value", "0", "HibernateOnPower", "All Operating Systems", "Halt on Fail")
18 getVariable("Constant Value", "90", "HibernateOnBattery", "All Operating Systems", "Halt on Fail")
19 // Lid close actions: 0 - Do nothing; 1 - Sleep; 2 - Hibernate; 3 - Shut down
20 getVariable("Constant Value", "0", "LidCloseOnPower", "All Operating Systems", "Halt on Fail")
21 getVariable("Constant Value", "1", "LidCloseOnBattery", "All Operating Systems", "Halt on Fail")
22 // Power button actions: 0 - Do nothing; 1 - Sleep; 2 - Hibernate; 3 - Shut down
23 getVariable("Constant Value", "3", "PowerButtonOnPower", "All Operating Systems", "Halt on Fail")
24 getVariable("Constant Value", "3", "PowerButtonOnBattery", "All Operating Systems", "Halt on Fail")

```

All parameters except **Lid close** and **Power button** actions are set in minutes, while valid values for the **Lid close** and **Power button** actions are:

- 0** – Do nothing
- 1** – Sleep
- 2** – Hibernate
- 3** – Shut down

11. Lid close action Plugged in

```

4 // Unattended sleep timeout in minutes. 0 - Never
5 getVariable("Constant Value", "0", "SleepOnPower", "All Operating Systems", "Halt on Fail")
6 getVariable("Constant Value", "2", "SleepOnBattery", "All Operating Systems", "Halt on Fail")
7 // Monitor timeout in minutes. 0 - Never
8 getVariable("Constant Value", "0", "DisplayOnPower", "All Operating Systems", "Halt on Fail")
9 getVariable("Constant Value", "5", "DisplayOnBattery", "All Operating Systems", "Halt on Fail")
10 // Standby timeout in minutes. 0 - Never
11 getVariable("Constant Value", "0", "StandbyOnPower", "All Operating Systems", "Halt on Fail")
12 getVariable("Constant Value", "15", "StandbyOnBattery", "All Operating Systems", "Halt on Fail")
13 // HDD timeout in minutes. 0 - Never
14 getVariable("Constant Value", "0", "HDDOnPower", "All Operating Systems", "Halt on Fail")
15 getVariable("Constant Value", "10", "HDDOnBattery", "All Operating Systems", "Halt on Fail")
16 // Hibernate timeout in minutes. 0 - Never
17 getVariable("Constant Value", "0", "HibernateOnPower", "All Operating Systems", "Halt on Fail")
18 getVariable("Constant Value", "0", "HibernateOnBattery", "All Operating Systems", "Halt on Fail")
19 // Lid close actions: 0 - Do nothing; 1 - Sleep; 2 - Hibernate; 3 - Shut down
20 getVariable("Constant Value", "0", "LidCloseOnPower", "All Operating Systems", "Halt on Fail")
21 getVariable("Constant Value", "1", "LidCloseOnBattery", "All Operating Systems", "Halt on Fail")
22 // Power button actions: 0 - Do nothing; 1 - Sleep; 2 - Hibernate; 3 - Shut down
23 getVariable("Constant Value", "3", "PowerButtonOnPower", "All Operating Systems", "Halt on Fail")
24 getVariable("Constant Value", "3", "PowerButtonOnBattery", "All Operating Systems", "Halt on Fail")

```

12. Lid close action On battery

```

4 // Unattended sleep timeout in minutes. 0 - Never
5 getVariable ("Constant Value", "0", "SleepOnPower", "All Operating Systems", "Halt on Fail")
6 getVariable ("Constant Value", "2", "SleepOnBattery", "All Operating Systems", "Halt on Fail")
7 // Monitor timeout in minutes. 0 - Never
8 getVariable ("Constant Value", "0", "DisplayOnPower", "All Operating Systems", "Halt on Fail")
9 getVariable ("Constant Value", "5", "DisplayOnBattery", "All Operating Systems", "Halt on Fail")
10 // Standby timeout in minutes. 0 - Never
11 getVariable ("Constant Value", "0", "StandbyOnPower", "All Operating Systems", "Halt on Fail")
12 getVariable ("Constant Value", "15", "StandbyOnBattery", "All Operating Systems", "Halt on Fail")
13 // HDD timeout in minutes. 0 - Never
14 getVariable ("Constant Value", "0", "HDDOnPower", "All Operating Systems", "Halt on Fail")
15 getVariable ("Constant Value", "10", "HDDOnBattery", "All Operating Systems", "Halt on Fail")
16 // Hibernate timeout in minutes. 0 - Never
17 getVariable ("Constant Value", "0", "HibernateOnPower", "All Operating Systems", "Halt on Fail")
18 getVariable ("Constant Value", "0", "HibernateOnBattery", "All Operating Systems", "Halt on Fail")
19 // Lid close actions: 0 - Do nothing; 1 - Sleep; 2 - Hibernate; 3 - Shut down
20 getVariable ("Constant Value", "0", "LidCloseOnPower", "All Operating Systems", "Halt on Fail")
21 getVariable ("Constant Value", "1", "LidCloseOnBattery", "All Operating Systems", "Halt on Fail")
22 // Power button actions: 0 - Do nothing; 1 - Sleep; 2 - Hibernate; 3 - Shut down
23 getVariable ("Constant Value", "3", "PowerButtonOnPower", "All Operating Systems", "Halt on Fail")
24 getVariable ("Constant Value", "3", "PowerButtonOnBattery", "All Operating Systems", "Halt on Fail")

```

13. Power button action Plugged in


```

4 // Unattended sleep timeout in minutes. 0 - Never
5 getVariable ("Constant Value", "0", "SleepOnPower", "All Operating Systems", "Halt on Fail")
6 getVariable ("Constant Value", "2", "SleepOnBattery", "All Operating Systems", "Halt on Fail")
7 // Monitor timeout in minutes. 0 - Never
8 getVariable ("Constant Value", "0", "DisplayOnPower", "All Operating Systems", "Halt on Fail")
9 getVariable ("Constant Value", "5", "DisplayOnBattery", "All Operating Systems", "Halt on Fail")
10 // Standby timeout in minutes. 0 - Never
11 getVariable ("Constant Value", "0", "StandbyOnPower", "All Operating Systems", "Halt on Fail")
12 getVariable ("Constant Value", "15", "StandbyOnBattery", "All Operating Systems", "Halt on Fail")
13 // HDD timeout in minutes. 0 - Never
14 getVariable ("Constant Value", "0", "HDDOnPower", "All Operating Systems", "Halt on Fail")
15 getVariable ("Constant Value", "10", "HDDOnBattery", "All Operating Systems", "Halt on Fail")
16 // Hibernate timeout in minutes. 0 - Never
17 getVariable ("Constant Value", "0", "HibernateOnPower", "All Operating Systems", "Halt on Fail")
18 getVariable ("Constant Value", "0", "HibernateOnBattery", "All Operating Systems", "Halt on Fail")
19 // Lid close actions: 0 - Do nothing; 1 - Sleep; 2 - Hibernate; 3 - Shut down
20 getVariable ("Constant Value", "0", "LidCloseOnPower", "All Operating Systems", "Halt on Fail")
21 getVariable ("Constant Value", "1", "LidCloseOnBattery", "All Operating Systems", "Halt on Fail")
22 // Power button actions: 0 - Do nothing; 1 - Sleep; 2 - Hibernate; 3 - Shut down
23 getVariable ("Constant Value", "2", "PowerButtonOnPower", "All Operating Systems", "Halt on Fail")
24 getVariable ("Constant Value", "2", "PowerButtonOnBattery", "All Operating Systems", "Halt on Fail")

```

14. Power button action On battery

```

4 // Unattended sleep timeout in minutes. 0 - Never
5 getVariable ("Constant Value", "0", "SleepOnPower", "All Operating Systems", "Halt on Fail")
6 getVariable ("Constant Value", "2", "SleepOnBattery", "All Operating Systems", "Halt on Fail")
7 // Monitor timeout in minutes. 0 - Never
8 getVariable ("Constant Value", "0", "DisplayOnPower", "All Operating Systems", "Halt on Fail")
9 getVariable ("Constant Value", "5", "DisplayOnBattery", "All Operating Systems", "Halt on Fail")
10 // Standby timeout in minutes. 0 - Never
11 getVariable ("Constant Value", "0", "StandbyOnPower", "All Operating Systems", "Halt on Fail")
12 getVariable ("Constant Value", "15", "StandbyOnBattery", "All Operating Systems", "Halt on Fail")
13 // HDD timeout in minutes. 0 - Never
14 getVariable ("Constant Value", "0", "HDDOnPower", "All Operating Systems", "Halt on Fail")
15 getVariable ("Constant Value", "10", "HDDOnBattery", "All Operating Systems", "Halt on Fail")
16 // Hibernate timeout in minutes. 0 - Never
17 getVariable ("Constant Value", "0", "HibernateOnPower", "All Operating Systems", "Halt on Fail")
18 getVariable ("Constant Value", "0", "HibernateOnBattery", "All Operating Systems", "Halt on Fail")
19 // Lid close actions: 0 - Do nothing; 1 - Sleep; 2 - Hibernate; 3 - Shut down
20 getVariable ("Constant Value", "0", "LidCloseOnPower", "All Operating Systems", "Halt on Fail")
21 getVariable ("Constant Value", "1", "LidCloseOnBattery", "All Operating Systems", "Halt on Fail")
22 // Power button actions: 0 - Do nothing; 1 - Sleep; 2 - Hibernate; 3 - Shut down
23 getVariable ("Constant Value", "3", "PowerButtonOnPower", "All Operating Systems", "Halt on Fail")
24 getVariable ("Constant Value", "2", "PowerButtonOnBattery", "All Operating Systems", "Halt on Fail")

```

Please note: settings made using a GPO override settings made using the Agent Procedure or manually.

You can create a Policy under Policy Management to schedule this agent procedure to maintain Windows Power Settings for your managed endpoints.

Windows – Set Power Options – Prompt for settings

The “Windows – Set Power Options – Prompt for settings” Agent Procedure requires values that will prompt at the execution of the procedure.

Script Prompts

▪ Schedule Agent Procedure

Script Prompts

System Unattended Sleep Timeout (Plugged in):

System Unattended Sleep Timeout (On battery):

Turn off display (Plugged in):

Turn off display (On battery):

Sleep after (Plugged in):

Sleep after (Plugged in):

Turn off hard disk (Plugged in):

Turn off hard disk (On battery):

Hibernate after (Plugged in):

Hibernate after (On battery):

Lid close action (Plugged in): 0 - Do nothing; 1 - Sleep; 2 - Hibernate; 3 - Shut down:

Lid close action (On battery): 0 - Do nothing; 1 - Sleep; 2 - Hibernate; 3 - Shut down:

Power button action (Plugged in): 0 - Do nothing; 1 - Sleep; 2 - Hibernate; 3 - Shut down:

Power button action (On battery): 0 - Do nothing; 1 - Sleep; 2 - Hibernate; 3 - Shut down:

Number of minutes

Valid values are: 0, 1, 2, 3

Submit Cancel

All parameters except **Lid close** and **Power button** actions are set in minutes, while valid values for the **Lid close** and **Power button** actions are:

- 0 – Do nothing
- 1 – Sleep
- 2 – Hibernate
- 3 – Shut down

Please note: settings made using a GPO override settings made using the Agent Procedure or manually.