

Huge abuses in Rzeszów

City: Rzeszów

Country: Poland

Hi, I have noticed a lot of abuses done in this city. Someone notoriously nominates duplicate playgrounds and objects without safe pedestrian access. **Please, remove wayspots that do not meet the criteria and take action against the perpetrator.**

1. DUPLICATES

In AMA we can read: "individual pieces of playground equipment that are submitted separately are not eligible, even though the playground at large may be. Rather, the individual pieces of equipment should be marked as duplicates to there's just the one Wayspot for the whole playground."

<https://community.wayfarer.nianticlabs.com/discussion/10321/november-ama-your-questions-answered/p1>

This thread also confirms that playgrounds, which have been dismantled into several wayspots, meet the removal criteria (NianticKK has decided to remove such a duplicate): <https://community.wayfarer.nianticlabs.com/discussion/15457/the-duplicate-of-a-playground>

The fact that duplicate wayspots meet the removal criteria is also confirmed by this thread:

https://community.wayfarer.nianticlabs.com/discussion/comment/153715#Comment_153715 and

Niantic statements in these threads

<https://community.wayfarer.nianticlabs.com/discussion/30360/invalid-wayspot-duplication-as-per-the-ama>

<https://community.wayfarer.nianticlabs.com/discussion/29238/duplicate-poi-playground>

https://community.wayfarer.nianticlabs.com/discussion/comment/140863#Comment_140863



NianticGiffard Posts: 8,605 Niantic > admin
February 21

Happy to shed light on your query!

Answering all the questions raised by you which are as follows:

1) <https://intel.ingress.com/?pll=50.059916,21.979281> - This is a single swing - part of "Podwórko" playground and it's separated by a walking path. - Not a duplicate of "Podwórko" playground since there are two separate sets of playgrounds that are separated by a walking path.

2) <https://intel.ingress.com/?pll=50.059588,21.976395> - This is a single carousel - clear part of "Osiedlowy plac zabaw" - placed 5 m from that playground waypoint. - Yes, it is duplicate.

3) <https://intel.ingress.com/?pll=50.058489,21.97945> - This is a single piece of equipment on a big playground. - Yes, it is duplicate

4) <https://intel.ingress.com/?pll=50.057488,21.981571> - You don't need to be Sherlock to see that's one big playground split into two parts. - The location is a duplicate of the other equipment in the playground. Please keep in mind that if there are different sets of playgrounds within the same park/big playgrounds they will not be duplicates of each playground.

5) <https://intel.ingress.com/?pll=50.0577,21.982599> - The same situation - it's clear it's the same playground. - Yes, it is duplicate

Now coming to your last query - **What's your opinion about playgrounds that are replaced with new equipment?** - Players need to update the new image of the play area of remodeled/renovated/pieces of equipment that are replaced if the Wayspot represents a playground.

I hope I am clear and was on point.

If it turns out that the wayspots don't meet the deletion criteria, please explain why this is because the wayspots below are duplicates, as confirmed by Giffard, and the links above confirm that duplicates (also in such cases) are deleted.

Because all players and all areas have the same criteria, please remove the duplicate playgrounds below.

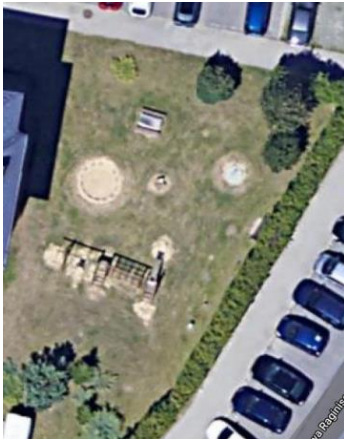
- <https://intel.ingress.com/intel?ll=50.059588,21.976395&z=19&pll=50.059588,21.976395>

"Mała karuzela" is a duplicate of "Osiedlowy Plac Zabaw"

(<https://intel.ingress.com/intel?ll=50.059536,21.976272&z=19&pll=50.059536,21.976272>)

The fact that "Mała karuzela" is a duplicate was confirmed by Giffard in a comment on this thread

<https://community.wayfarer.nianticlabs.com/discussion/29028/playgrounds-and-duplicates> (point 2).



- <https://intel.ingress.com/intel?ll=50.058489,21.97945&z=19&pll=50.058489,21.97945> and

<https://intel.ingress.com/intel?ll=50.058415,21.979343&z=19&pll=50.058415,21.979343> are duplicates of each other. So one of these two wayspots should be removed.

The fact that "Śliczny Koniczek" is a duplicate was confirmed by Giffard in a comment on this thread

<https://community.wayfarer.nianticlabs.com/discussion/29028/playgrounds-and-duplicates> (point 3).



- <https://intel.ingress.com/intel?ll=50.057488,21.981571&z=19&pll=50.057488,21.981571>,
<https://intel.ingress.com/intel?ll=50.057426,21.981374&z=19&pll=50.057426,21.981374> and
<https://intel.ingress.com/intel?ll=50.057699,21.981734&z=19&pll=50.057699,21.981734> are duplicates of each other. So two of these three wayspots should be removed.

The fact that "Domek małych dzieci. " is a duplicate was confirmed by Giffard in a comment on this thread

<https://community.wayfarer.nianticlabs.com/discussion/29028/playgrounds-and-duplicates> (point 4).



- <https://intel.ingress.com/intel?ll=50.0577,21.982599&z=19&pll=50.0577,21.982599>
 "Podwójne Huśtawki" is a duplicate of "Osiedlowy Plac Zabaw Na Ulicy Brydaka" (<https://intel.ingress.com/intel?ll=50.057643,21.982708&z=19&pll=50.057643,21.982708>).

The fact that "Podwójne Huśtawki" is a duplicate was confirmed by Giffard in a comment on this thread

<https://community.wayfarer.nianticlabs.com/discussion/29028/playgrounds-and-duplicates> (point 5).



- In addition
<https://intel.ingress.com/intel?ll=50.062227,21.982796&z=19&pll=50.062227,21.982796> and
<https://intel.ingress.com/intel?ll=50.062291,21.983012&z=19&pll=50.062291,21.983012> are
duplicates of each other, therefore one of them should be deleted.



2. NO SAFE PEDESTRIANS ACCESS

The following wayspots are on a street with no sidewalk, so are not safe access.

- <https://intel.ingress.com/intel?ll=50.070099,21.97094&z=17&pll=50.070099,21.97094>

Street View: <https://goo.gl/maps/HmSVqMXwaoW12nSi8>

The current (December 2021) satellite image from the Geoportal to show that there is still no pavement in this place.



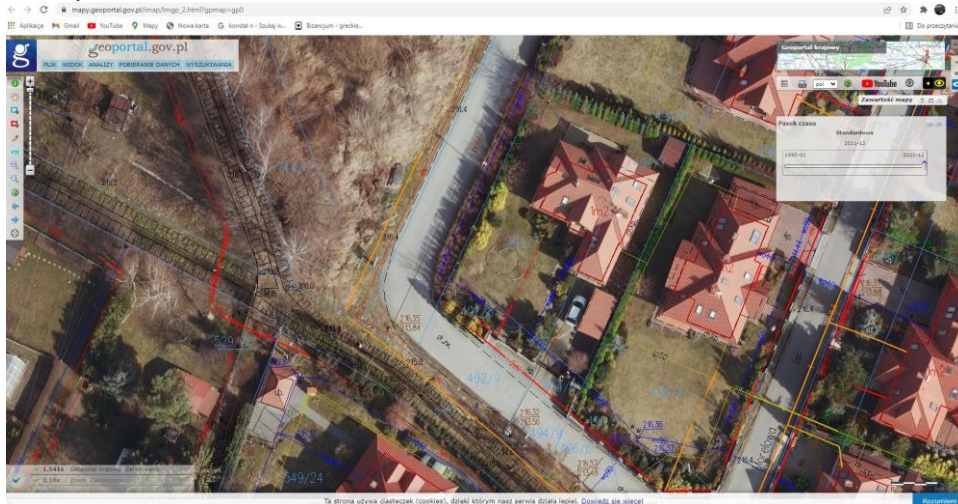
- <https://intel.ingress.com/intel?ll=50.06653,21.981681&z=20&pll=50.06653,21.981681>

Street View: <https://goo.gl/maps/xFyzDtW63u96CXHD8> and

<https://goo.gl/maps/d3dhFht6Ge4mSEEG9>

The current (December 2021) satellite image from the Geoportal to show that there is still no pavement

in this place.

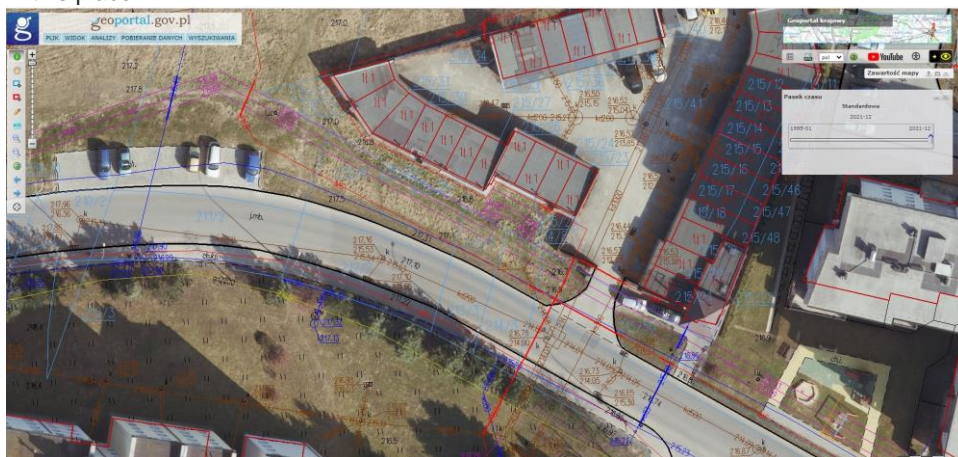


- <https://intel.ingress.com/intel?ll=50.062168,21.976637&z=18&pll=50.062168,21.976637>
and

<https://intel.ingress.com/intel?ll=50.062095,21.976736&z=18&pll=50.062095,21.976736>

Street View: <https://goo.gl/maps/rkLu2QyPDmLhLSZm7> (dangerous street with no sidewalk)

The current (December 2021) satellite image from the Geoportal to show that there is still no pavement in this place.



- <https://intel.ingress.com/intel?ll=50.04922,21.931034&z=16&pll=50.04922,21.931034>
Street View: <https://goo.gl/maps/zWfFHLgo3FDxc5X8>
- <https://intel.ingress.com/intel?ll=50.062239,21.944066&z=16&pll=50.062239,21.944066>
SV: <https://goo.gl/maps/hFAjBs63GBYDj2e16>
- <https://intel.ingress.com/intel?ll=50.056845,21.961927&z=18&pll=50.056845,21.961927>
SV: <https://goo.gl/maps/3dm3VikUGVY1c52R9> (chapel is in the middle of traffic circle,
There is no pedestrian crossing to the islet in the middle of the roundabout.)



3. PRIVATE RESIDENTIAL PROPERTY

<https://intel.ingress.com/intel?ll=50.054327,21.949484&z=19&pll=50.054327,21.949484>

On the government website of the Geoportal (<https://www.geoportal.gov.pl/> has newer satellite photos), we can see that the chapel is behind a fence, in a private garden. It's PRP.



The spherical photo is old and there is no shrine in it, but you can see a fence and no sidewalk by the road. <https://goo.gl/maps/RAwDfLkHqJ5MZpBK7>

Please remove wayspots that do not meet the criteria.

Don't allow abuses.

Thank you in advance.