

Here is the complete list of false nominations, numbered #1-#215, provided with pictures, links and other proof as to why each one is fake. I apologize for the low-quality screenshots, due to being on a cell phone. Opening up the nominations in question on a computer should provide much more high-resolution pictures. Each sign will have its distinct identifiers listed, with the visible ones in **BOLD text**. **REMEMBER: I am trying to prove that every "Type A", "Type B" etc is the same sign-post (showcasing identifying markers) and that multiple submitters have used the same holder to create a huge amount of fake submissions in several different locations for their own benefit.**

Links to every Wayspot is provided in the title - ie clicking on "Informationsskylt En" below will take you to that nomination. All pictures are numbered to indicate what nomination they belong too.

**Thank you in advance for looking into this.**



#### #1 [Informationsskylt En](#)

Type A: **white post, two black dots, half circle smudge, gray smudge, scratch on the left side of frame**

Additional: SiS logo removed, OK logo added. Also, a second laminated sheet can be seen along the bottom due to the first being pushed up about 1 cm.

#### #2 [Informationsskylt Hästkastanj](#)

Type A: **white post, two black dots, half circle smudge, gray smudge, scratch on the left side of frame**

Additional: SiS logo removed, OK logo added.  
Duplicate with #16

#### #3 [Trollstugan](#)

This is simply a fake duplicate of the actual nomination "[Trollhuset](#)" near the playground.

#### #4 [Fisketrollen](#)

Another fake troll nomination. The real one is "[Trollgrottan](#)" in the park. The troll holding a big fish on the left here is the same troll that is standing to the right of the "troll cave" in the real nomination.



## #5 [Information Glasbjörk](#)

Type B: **white post, missing sliver, black dot, three grey stripes on right side of post, top left corner bent upwards**

Additional: SiS logo removed, OK logo added. Second laminated sheet can be seen along the bottom of the sign.

## #6 [Informationsskylt Tall](#)

Type B: **white post, missing sliver, black dot, three grey stripes on right side of post, top left corner bent upwards**

Additional: SiS logo removed, OK logo added. Several sheets of paper visible along the bottom.

## #7 [Biologisk mångfald i skogen](#)

Type B: **white post, missing sliver, black dot, three grey stripes on right side of post, top left corner bent upwards**

Additional: SiS logo removed, OK logo added.

## #8 [Infoskylt Asp](#)

Type A: **white post, two black dots, half circle smudge, gray smudge, scratch on the left side of frame, big dirty smudge on middle of post**

Additional: SiS logo removed, OK logo added.





#9 [Infoskylt Asp](#)

Type A: **white post**, two black dots, half circle smudge, **gray smudge**, scratch on the left side of frame, **big dirty smudge on middle of post**.

Additional: SiS logo removed, OK logo added.

#10 [Infoskylt Lind](#)

Type A: **white post**, two black dots, half circle smudge, **gray smudge**, scratch on the left side of frame, **big dirty smudge on middle of post**

Additional: SiS logo removed, OK logo added.

#11 [Infoskylt Bok](#)

Type A: **white post**, two black dots, half circle smudge, **gray smudge**, scratch on the left side of frame

Additional: SiS logo removed, OK logo added. Another laminated sheet can be seen along the bottom of the sign.



#12 [Informationsskylt Lind](#)

Type A: **white post**, two black dots, half circle smudge, gray smudge, scratch on the left side of frame, **big dirty smudge on middle of post**

Additional: SiS logo removed, OK logo added





#13 [Informationsskylt Brakved](#)

Type A: white post, two black dots, half circle smudge, gray smudge, scratch on the left side of frame, big dirty smudge on middle of post

Additional: SiS logo removed, OK logo added.

#14 [Faktaskylt om Gran](#)

Type A: white post, two black dots, half circle smudge, gray smudge, scratch on the left side of frame, big dirty smudge on middle of post

Additional: SiS logo removed, OK logo added.

Second laminated sheet visible. #14 is a cropped version/duplicate of #15 (below).

#15 [Faktaskylt om Gran](#)

Type A: white post, two black dots, half circle smudge, gray smudge, scratch on the left side of frame, big dirty smudge on middle of post

Additional: SiS logo removed, OK logo added. Second laminated sheet visible along bottom. Duplicate with #14.

#16 [Informationsskylt Hästkastanj](#)

Type A: white post, two black dots, half circle smudge, gray smudge, scratch on the left side of frame

Additional: Warped picture with black edging on both sides. Very likely taken of a computer screen. Picture is duplicate with #2 (see matching grass in circled areas).





### #17 [Faktaskylt Avenbok](#)

Type A: **white post, two black dots, half circle smudge, gray smudge, scratch on the left side of frame**

Additional: SiS logo removed, OK logo added.

Pre-punched printer paper used (holes on left side). Background scenery identical to #18 (below)

### #18 [Faktaskylt Oxel](#)

Type A: **white post, two black dots, half circle smudge, gray smudge, scratch on the left side of frame**

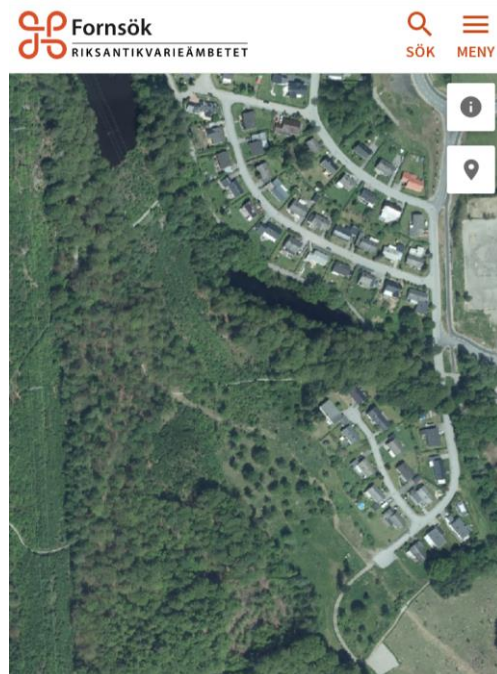
Additional: SiS logo removed, OK logo added.

Pre-punched printer paper used (holes on left side). Background scenery identical to #17 (above)

### #19 [Blomkvists](#)

Real sign used to create a fake Wayspot. The real sign is somewhere in Kyrkhult, 10km to the northeast, not in Olofström. (Bottom left of sign says Kyrkhults hembygdsförening, see #23 for a clearer picture of the same logo on a different sign)

There's no marker on Fornsök - run by Riksantikvarieämbetet (bottom right of sign) which there should be since they are involved in putting up the signage. (right picture)





## #20 [Märkta för livet](#)

A faked duplicate of a real sign. Picture purposefully cropped to hide the fact that the bottom of the sign has the logo belonging to [Länsstyrelsen Östergötland](#). Real location (and real nomination) [here](#), 380km away from Olofström.

## #21 [Mät höjden på ett träd](#)

Another fake duplicate of a real sign. Real location (and real nomination) [here](#), in Trollhättan, 340km away. Also used for #57 on this list as well as nominated (but as of yet not approved/possibly rejected) in a 3rd location that will be listed at the end.



## #22 [Ekoxekompost](#)

Completely fake Wayspot. The picture is stolen from this [article](#), (second picture) and cropped to try and hide this fact. Note that all black spots as well as the photographer's legs reflected in the bottom of the sign are exactly the same in the article and nomination.

This picture is also used for #58, making them duplicates. Johannishusåsen, which is mentioned as the location in the article is 70km away from Olofström.



## #23 [Lassagubbens Stuga](#)

Real sign used to create a fake Wayspot. This sign is in Kyrkhult (bottom left says Kyrkhults hembygdsförening) not Olofström. This is the real location marked on [Fornsök](#). Underneath "Övrig Länninginformation" and "Namn på lämning" it states "Lassa-Svenos stuga" - the man living there was named Sven and called "Lassa-Sven"/"Lassagubben".

"Stuga" means cottage.

Duplicate with #209





## #24 [Informationsskylt Druvek](#)

Type A: **white post, two black dots, half circle smudge, gray smudge, scratch on the left side of frame**

Additional: SiS logo removed, OK logo added. Second laminated sheet visible along the bottom.

## #25 [Biologisk mångfald i skogen](#)

Type B: **white post, missing sliver, black dot, three grey stripes on right side of post, top left corner bent upwards**

Additional: SiS logo removed, OK logo added.

## #26 [Faktaskylt Tall](#)

Type A: **white post, two black dots, half circle smudge, gray smudge, scratch on the left side of frame**

Additional: SiS logo removed, OK logo added. Picture also used for #30 and #123, making them identical duplicates.

## #27 [Faktaskylt om Glasbjörk](#)

Type A: **white post, two black dots, half circle smudge, gray smudge, scratch on the left side of frame**

Additional: SiS logo removed, OK logo added.

Picture also used for #129, making them duplicates.

The black smudge in the bottom left corner on the sheet sticking out behind the top one is visible on #29, suggesting that it was behind the one in #27.





## #28 [Faktaskylt Druvek](#)

Type A: **white post, two black dots, half circle smudge, gray smudge, scratch on the left side of frame**

Additional: SiS logo removed, OK logo added.

This picture is also used for #53, #124 and #134 (cropped) making all four duplicates of each other.

## #29 [Informationsskylt Gran](#)

Type A: **white post, two black dots, half circle smudge, gray smudge, scratch on the left side of frame**

Additional: SiS logo removed, OK logo added.

The black smudge in #27 visible in bottom left corner.

## #30 [Faktaskylt Tall](#)

Type A: **white post, two black dots, half circle smudge, gray smudge, scratch on the left side of frame**

Additional: SiS logo removed, OK logo added.

Duplicate, same picture as #26 and #123

## #31 [Faktaskylt Bok](#)

Type A: **white post, two black dots, half circle smudge, gray smudge, scratch on the left side of frame**

Additional: SiS logo removed, OK logo added





### #32 [Faktaskylt Skogens vatten](#)

Type A: **white post, two black dots**, half circle smudge, gray smudge, **scratch on the left side of frame**

Additional: SiS logo left intact, OK logo added.



### #33 [Faktaskylt Ask](#)

Type A: **white post, two black dots**, half circle smudge, gray smudge, **scratch on the left side of frame**

Additional: SiS logo left intact, OK logo added.



### #34 [Faktaskylt Asp](#)

Type A: **white post, two black dots**, half circle smudge, gray smudge, **scratch on the left side of frame**

Additional: SiS logo removed, OK logo added.



### #35 [Faktaskylt Fågelbär](#)

Type A: **white post, two black dots**, half circle smudge, gray smudge, **scratch on the left side of frame**

Additional: SiS, SkogsSverige and Skogssällskapet logos left. OK logo added. Pre-punched printer paper used (left side). Another laminated sheet visible along the bottom.



#36 [Faktaskylt om Oxel](#)

Type C: **metal post, white "dotted" marking on the post, black spots on bottom edge**

Additional: SiS logo left intact, OK logo added.

#37 [Faktaskylt om Syrenbuske](#)

Type C: **metal post, white "dotted" marking on the post, black spots on bottom edge, black mark on right side**

Additional: Homemade sign ([text and second picture directly from the Wikipedia page](#)). The laminated sheet is sticking out along the bottom.

Picture used for #204 and #205 as well, identical duplicates.



#38 [Faktaskylt om Rönn](#)

Type C: **metal post, white "dotted" marking on the post, black spots on bottom edge, black mark on right side**

Additional: SiS logo left intact, no OK logo.

Identical duplicate with #41 and #55.



#39 [Infoskylt Gran](#)

Type A: **white post, two black dots, half circle smudge, gray smudge, scratch on the left side of frame**

Additional: SiS logo removed, OK logo added. Second laminated sheet visible along the bottom.



#### #40 [Infoskylt En](#)

Type A: **white post, two black dots, half circle smudge, gray smudge, scratch on the left side of frame**

Additional: SiS logo removed, OK logo added. Second sheet visible along the bottom.

#### #41 [Faktaskylt om Rönn](#)

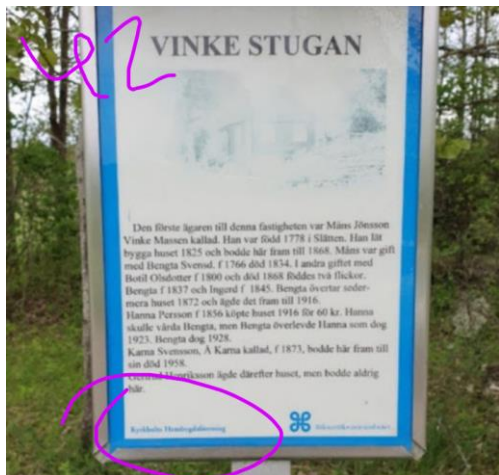
Type C: **metal post, white "dotted" marking on the post, black spots on bottom edge**

Additional: SiS logo left intact. No OK logo.  
Identical duplicate with #38 and #55

#### #42 [Vinke Stugan](#)

Located in Kyrkhult, 10km to the northeast, not Olofström. The sign says Kyrkhults hembygdsförening in the bottom left.

Identical duplicate with #56. Neither claimed location is correct.



#### #43 [Smålandsgatans Hundrastgård](#)

Type E: **thick aluminum edge, dent (top right), scratches (bottom), scratches (lower right side), printout smudging (bottom right), base visible**

Additional: Homemade sign, note identical font used on #44 in a completely different type of sign post. The paper has also been folded along the middle creating a thick crease.





#44 [Smålandsgatans Naturslinga](#)

Type D: **metal post**, **scratch mark on top left and right side of post**, **black mark on top right corner of sign**, **"bubbly" edges**

Additional: Homemade sign, same font as #43. OK logo added.

#45 [Faktaskylt om Tall](#)

Type E: **thick aluminum edge**, **dent (top right)**, **scratches (bottom)**, **scratches (lower right side)**, **printout smudging (bottom right)**, **base visible**

Additional: SiS logo removed, OK logo added

Pre-punched printer paper used (holes on left side).



#46 [Faktaskylt om alm](#)

Type E: **thick aluminum edge**, **dent (top right)**, **scratches (bottom)**, **scratches (lower right side)**, **printout smudging (bottom right)**, **base visible**

Additional: SiS logo removed, OK logo added.

Pre-punched printer paper used (holes on left side). Identical duplicate with #61



#47 [Faktaskylt om lärk](#)

Type E: **thick aluminum edge**, **dent (top right)**, **scratches (bottom)**, **scratches (lower right side)**, **printout smudging (bottom right)**, **base visible**

Additional: SiS logo removed, OK logo added.

Black dot on the left of the ship, same dot visible in #48 and #51

#48 [Faktaskylt om Skogslönn](#)

Type E: **thick aluminum edge**, **dent (top right)**, **scratches (bottom)**, **scratches (lower right side)**, **printout smudging (bottom right)**, **base visible**

Additional: SiS logo removed, OK logo added.

Pre-punched printer paper used (holes on left side).

Black dot on the left by the violin, same dot visible in #47 and #51





#49 [Skogen nära staden](#)

Type D: **metal post, scratch mark on top left and right side of post, black mark on top right corner of sign, "bubbly" edges**

Additional: SiS logo left intact. Black and white print of colored PDF. Identical duplicate with #65

#50 [Skogen berättar om vår historia](#)

Type D: **metal post, scratch mark on top left and right side of post, black mark on top right corner of sign, "bubbly" edges**

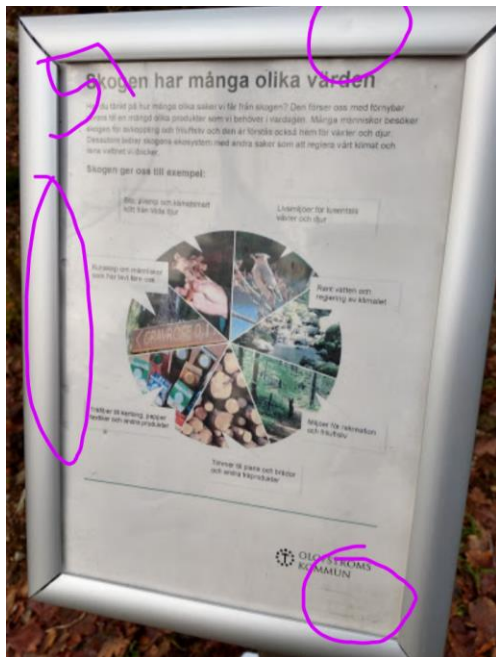


Additional: SiS logo left intact, Black and white print of colored PDF.

#51 [Skogen har många olika värden](#)

Type E: **thick aluminum edge, dent (top right), scratches (bottom), scratches (lower right side), printout smudging (bottom right), base visible**

Additional: SiS logo removed, OK logo added. Pre-punched printer paper used (holes on left side). Black dot visible below bottom text on the left, same dot in #47 and #48.



#52 [Lavar i Sveriges blandskog](#)

Type D: **metal post, scratch mark on top left and right side of post, black mark on top right corner of sign, "bubbly" edges**

Additional: All the text and pictures used (first paragraph and last about "Urgamla kartor") are directly from an article by [Sveriges Natur](#) - copyrighted by them. Very unlikely to be allowed to use part of it on a signpost. Identical duplicate with #64



#53 [Faktaskylt Druvek](#)

Type A: **white post, two black dots, half circle smudge, gray smudge, scratch on the left side of frame**

Additional: SiS logo removed, OK logo added.

Identical duplicate with #28, #124 and #134 (cropped).

#54 [Faktaskylt Gran](#)

Type A: **white post, two black dots, half circle smudge, gray smudge, scratch on the left side of frame**

Additional: SiS logo removed, OK logo added.

Identical duplicate of #122

#55 [Faktaskylt om Rönn](#)

Type C: **metal post, white "dotted" marking on the post, black spots on bottom edge**

Additional: SiS logo left intact.  
Identical duplicate with #38 and #41

#56 [Vinke Stugan](#)

Real sign used to create a fake Wayspot in this location. The real sign is located in Kyrkhult, 10km to the northeast, not Olofström. The sign says Kyrkhults hembygdsförening in the bottom left. Identical duplicate with #42. Neither location is correct.





### #57 [Mät höjden på ett träd](#)

Real sign used to create a fake Wayspot in the wrong location. Real location (and real nomination) [here](#), in Trollhättan, 340km away. Also used for #21 on this list as well as nominated (but as of yet not approved/possibly rejected) in a 3rd location that will be listed at the end.

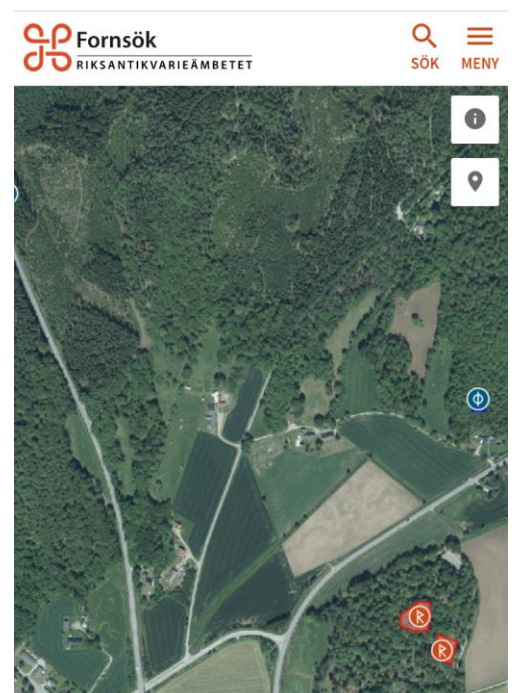
### #58 [Ekoxekompost](#)

Faked Wayspot. Picture stolen from this [article](#), (second picture) and cropped to try and hide this fact. Note that all black spots as well as the photographer's legs reflected in the bottom of the sign are exactly the same in the article and nomination.

This picture is also used for #22, making them duplicates. Johannishusåsen, which is mentioned as the location in the article is 70km away from Olofström.

### #59 [Faktaskylt Haralds torp](#)

This is another sign from Kyrkhult, not Jämshög, where this Wayspot is claimed to be located. No location marked on Fornsök (Swedish heritage site) at the claimed location (pictured right), even though Riksantikvarieämbetet, who runs Fornsök, is listed on the sign.





#### #60 [Faktaskylt om Klibbal](#)

Type D: **metal post**, scratch mark on top left and right side of post, **black mark on top right corner of sign, "bubbly" edges**

Additional: SiS logo removed, OK logo added.



#### #61 [Faktaskylt om Alm](#)

Type E: **thick aluminum edge**, **dent (top right)**, scratches (bottom), scratches (lower right side), **printout smudging (bottom right)**, base visible

Additional: SiS logo removed, OK logo added. Pre-punched printer paper used (holes on left side)  
Identical duplicate with #46



#### #62 [Skogen berättar om vår historia](#)

Type D: **metal post**, scratch mark on top left and right side of post, **black mark on top right corner of sign, "bubbly" edges**

Additional: SiS logo left intact. Pre-punched printer paper used (holes on left side). Black and white print of a colored PDF.



#### #63 [Jakt och friluftsliv i skogen](#)

Type D: **metal post**, scratch mark on top left and right side of post, **black mark on top right corner of sign, "bubbly" edges**

Additional: SiS logo removed, OK logo added.



#64 [Lavar i Sveriges blandskog](#)

Type D: **metal post, scratch mark on top left and right side of post, black mark on top right corner of sign, "bubbly" edges**

Additional: All the text and pictures used (first paragraph and last about "Urgamla kartor") are directly from an article by [Sveriges Natur](#) - copyrighted by them. Very unlikely to be allowed to use part of it on a signpost. Identical duplicate with #52

#65 [Skogen nära staden](#)

Type D: **metal post, scratch mark on top left and right side of post, black mark on top right corner of sign, "bubbly" edges**



Additional: SiS logo left intact. Identical duplicate with #49

#66 [Faktaskylt om Alm](#)

Type D: **metal post, scratch mark on top left and right side of post, black mark on top right corner of sign, "bubbly" edges**

Additional: SiS logo removed, OK logo added.

#67 [Faktaskylt om Gran](#)

Type D: **metal post, scratch mark on top left and right side of post, black mark on top right corner of sign, "bubbly" edges**

Additional: SiS logo removed, OK logo added.





#68 [Faktaskylt om Lärk](#)

Type D: **metal post**, scratch mark on top left and right side of post, **black mark on top right corner of sign**, "bubbly" edges

Additional: SiS logo removed, OK logo added.

#69 [Faktaskylt om Glasbjörk](#)

Type D: **metal post**, scratch mark on top left and right side of post, **black mark on top right corner of sign**, "bubbly" edges

Additional: SiS logo removed, OK logo added. Identical duplicate with #126



#70 [Faktaskylt om Hassel](#)

Type D: **metal post**, scratch mark on top left and right side of post, **black mark on top right corner of sign**, "bubbly" edges

Additional: SiS logo removed, OK logo added.

#71 [Faktaskylt om Lind](#)

Type D: **metal post**, scratch mark on top left and right side of post, **black mark on top right corner of sign**, "bubbly" edges

Additional: SiS logo removed, OK logo added.





#72 [Skogen och klimatet](#)

Type D: **metal post**, scratch mark on top left and right side of post, **black mark on top right corner of sign**, "bubbly" edges

Additional: SiS logo removed, OK logo added. Pre-punched printer paper (holes visible on the left side).

#73 [Faktaskylt om Skogslönn](#)

Type D: **metal post**, scratch mark on top left and right side of post, **black mark on top right corner of sign**, "bubbly" edges



Additional: SiS logo removed, OK logo added. Identical duplicate with #101

#74 [Så används den avvertrade skogen](#)

Type D: **metal post**, scratch mark on top left and right side of post, **black mark on top right corner of sign**, "bubbly" edges

Additional: SiS logo removed, OK logo added. Identical duplicate with #91



#75 [Faktaskylt om Syren](#)

Type C: **metal post**, white "dotted" marking on the post, **two black spots on bottom edge**

Additional: Along the right side of the sign there are two marks that are also clearly visible on #76. Homemade sign ([text and second picture directly from the Wikipedia page](#)) (same info as #37, #204 and #205)

#76 [Info skylt Eken](#)

Type C: **metal post**, white "dotted" marking on the post, **two black spots on bottom edge**

Additional: SiS left intact. Along the right side of the sign there are two marks that are also clearly visible on #76





### #77 [Infoskylt om Lönnen](#)

Type C: **metal post, white "dotted" marking on the post, black spots on bottom edge**

Additional: SiS logo left intact. Same smudge on the right as on #75 and #76. Laminated sheet sticking out of the bottom of the sign.

### #78 [Skogens vatten](#)

Type D: **metal post, scratch mark on top left and right side of post, black mark on top right corner of sign, "bubbly" edges**

Additional: SiS logo removed, OK logo added.



### #79 [Faktaskylt om Brakved](#)

Type D: **metal post, scratch mark on top left and right side of post, black mark on top right corner of sign, "bubbly" edges**

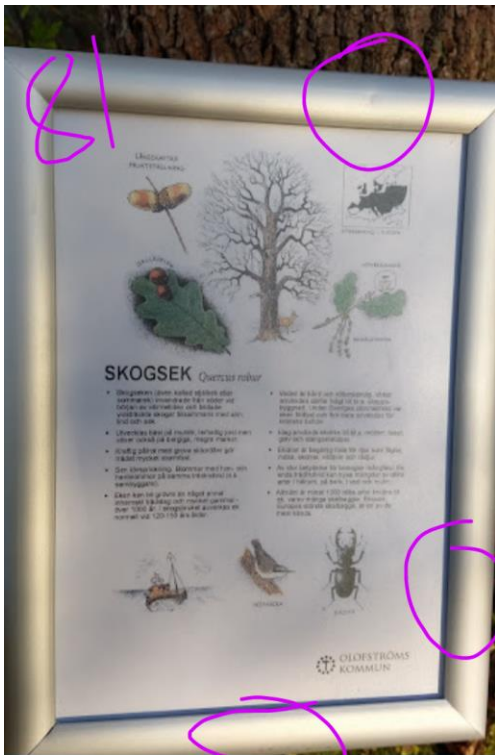
Additional: SiS logo removed, OK logo added.

### #80 [Faktaskylt om Gråal](#)

Type E: **thick aluminum edge, dent (top right), scratches (bottom), scratches (lower right side), printout smudging (bottom right), base visible**

Additional: SiS logo removed, OK logo added.

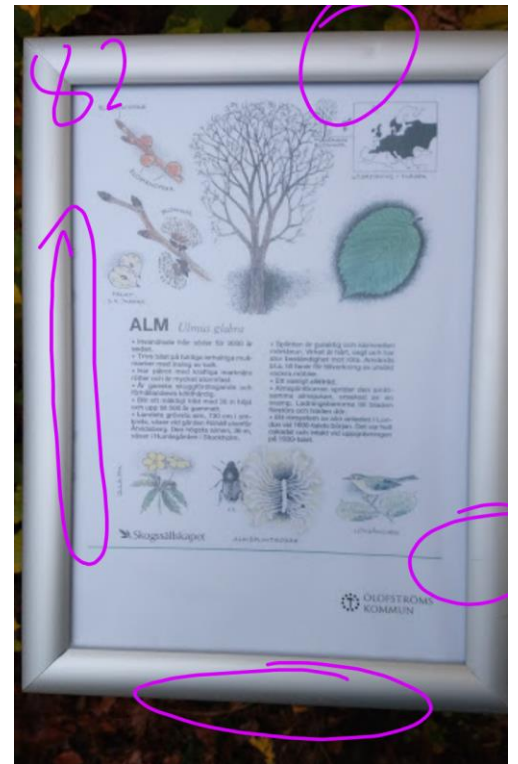




#81 [Faktaskylt om Skogsek](#)

Type E: thick aluminum edge, dent (top right), scratches (bottom), scratches (lower right side), printout smudging (bottom right), base visible

Additional: SiS logo removed, OK logo added.



#82 [Faktaskylt om Alm](#)

Type E: thick aluminum edge, dent (top right), scratches (bottom), scratches (lower right side), printout smudging (bottom right), base visible

Additional: SiS logo removed, OK logo added. Pre-punched paper used (holes on left side)



#83 [Faktaskylt om Klipbal](#)

Type E: thick aluminum edge, dent (top right), scratches (bottom), scratches (lower right side), printout smudging (bottom right), base visible

Additional: SiS logo removed, OK logo added.



#84 [Faktaskylt om Hägg](#)

Type E: thick aluminum edge, dent (top right), scratches (bottom), scratches (lower right side), printout smudging (bottom right), base visible

Additional: SiS logo removed, OK logo added.



#85 [Faktaskylt om Glasbjörk](#)

Type E: **thick aluminum edge, dent (top right), scratches (bottom), scratches (lower right side), printout smudging (bottom right), base visible**

Additional: SiS logo removed, OK logo added.



#86 [Inte störa - inte förstöra](#)

Type E: **thick aluminum edge, dent (top right), scratches (bottom), scratches (lower right side), printout smudging (bottom right), base visible**

Additional: SiS logo removed, OK logo added.



#87 [Vem äger Sveriges skogar](#)

Type D: **metal post, scratch mark on top left and right side of post, black mark on top right corner of sign, "bubbly" edges**

Additional: SiS logo removed, OK logo added.



#88 [Faktaskylt om Bok](#)

Type E: **thick aluminum edge, dent (top right), scratches (bottom), scratches (lower right side), printout smudging (bottom right), base visible**

Additional: SiS logo removed, OK logo added. Pre-punched printer paper used, (holes visible on the left)



#89 [Faktaskylt om Vårbjörk](#)

Type E: **thick aluminum edge, dent (top right), scratches (bottom), scratches (lower right side), printout smudging (bottom right), base visible**

Additional: SiS logo removed, OK logo added. Pre-punched printer paper used, (holes visible on the left)



#### #90 [Sveriges Skogstyper](#)

Type E: **thick aluminum edge, dent (top right), scratches (bottom), scratches (lower right side), printout smudging (bottom right), base visible**

Additional: SiS logo removed, OK logo added.

#### #91 [Så används den avvercade skogen](#)

Type D: **metal post, scratch mark on top left and right side of post, black mark on top right corner of sign, "bubbly" edges**

Additional: SiS logo removed, OK logo added. Identical duplicate with #74

#### #92 [Skogen och klimatet](#)

Type E: **thick aluminum edge, dent (top right), scratches (bottom), scratches (lower right side), printout smudging (bottom right), base visible**

Additional: SiS logo removed, OK logo added.

#### #93 [Skogen nära staden](#)

Type E: **thick aluminum edge, dent (top right), scratches (bottom), scratches (lower right side), printout smudging (bottom right), base visible**

Additional: SiS logo left intact. Black and white print of a full color PDF.





#94 [Faktaskylt om Gran](#)

Type E: **thick aluminum edge**, **dent (top right)**, scratches (bottom), scratches (lower right side), **printout smudging (bottom right)**, base visible

Additional: SiS logo removed, OK logo added. Pre-punched printer paper used (holes on left side)

#95 [Faktaskylt om Tall](#)

Type E: **thick aluminum edge**, **dent (top right)**, scratches (bottom), **scratches (lower right side)**, printout smudging (bottom right), **base visible**

Additional: SiS logo removed, OK logo added. Pre-punched printer paper used (holes on left side)



#96 [Skogen har många olika värden](#)

Type E: **thick aluminum edge**, **dent (top right)**, scratches (bottom), scratches (lower right side), printout smudging (bottom right), base visible

Additional: SiS logo removed, OK logo added. Pre-punched printer paper used (holes on left side)

#97 [Skogen berättar om vår historia](#)

Type E: **thick aluminum edge**, **dent (top right)**, scratches (bottom), scratches (lower right side), printout smudging (bottom right), base visible

Additional: SiS logo intact. Black and white print of a color PDF.





#98 [Faktaskylt om Avenbok](#)

Type E: **thick aluminum edge**, **dent (top right)**, scratches (bottom), **scratches (lower right side)**, printout smudging (bottom right), base visible

Additional: SiS logo removed, OK logo added. Same leaves visible on the bottom left hand corner in #98, #99 and #100



#99 [Faktaskylt om Rönn](#)

Type E: **thick aluminum edge**, **dent (top right)**, scratches (bottom), **scratches (lower right side)**, printout smudging (bottom right), base visible



Additional: SiS logo removed, OK logo added. Same leaves visible on the bottom left hand corner in #98, #99 and #100

#100 [Faktaskylt om Fågelbär](#)

Type E: **thick aluminum edge**, **dent (top right)**, scratches (bottom), scratches (lower right side), printout smudging (bottom right), base visible



Additional: SiS logo removed, OK logo added. Same leaves visible on the bottom left hand corner in #98, #99 and #100

#101 [Faktaskylt om Skogslönn](#)

Type D: **metal post**, scratch mark on top left and right side of post, **black mark on top right corner of sign**, "bubbly" edges

Additional: SiS logo removed, OK logo added. Identical duplicate with #73

#102 [Jakt och friluftsliv i skogen](#)



Type E: **thick aluminum edge**, **dent (top right)**, scratches (bottom), scratches (lower right side), printout smudging (bottom right), **base visible**

Additional: SiS logo removed, OK logo added. Identical duplicate with #119



### #103 [Invasiva växter](#)

Duplicate using the picture of a real nomination to create a false Wayspot here. The picture is cropped from the real location [here](#).

### #104 [Faktaskylt - BOK](#)

Type E: **thick aluminum edge, dent (top right), scratches (bottom), scratches (lower right side), printout smudging (bottom right), base visible**

Additional: SiS logo removed, OK logo added. Pre-punched printer paper used (holes on left side).

### #105 [Faktaskylt om Oxel](#)

Type D: **metal post, scratch mark on top left and right side of post, black mark on top right corner of sign, "bubbly" edges**

Additional: SiS logo removed, OK logo added.

### #106 [Lärkträd](#)

Type F: **three fresh wood planks, wood knots (left and right side), wooden post "1", wooden post "2", upside-down**

Additional: Logos left intact.

**Identical wood knots on the board for nominations: 106, 107, 108, 109, 110, 112, 113, 115 and 116.**





#107 [Information Skogssällskapet Lärk](#)

Type F: three fresh wood planks, wood knots (left and right side), wooden post "1", wooden post "2", upsidedown

Additional: Logos left intact.

#108 [Information Hägg](#)

Type F: three fresh wood planks, wood knots (left and right side), wooden post "1", wooden post "2", upsidedown

Additional: Logos left intact



#109 [Hästkastanj](#)

Type F: three fresh wood planks, wood knots (left and right side), wooden post "1", wooden post "2", upsidedown

Additional: Logos left intact

#110 [Oxel](#)

Type F: three fresh wood planks, wood knots (left and right side), wooden post "1", wooden post "2", upsidedown

Additional: Logos left intact.



#111 [Informationstavla om Hassel](#)

Type G: red plank, wood knots, cracked post

Additional: Logos left intact

#112 [Tall](#)

Type F: three fresh wood planks, wood knots (left and right side), wooden post "1", wooden post "2", upsidedown

Additional: SiS logo left intact.





#113 [Skogslönn](#)

Type F: **three fresh wood planks, wood knots (left and right side), wooden post "1", wooden post "2", upsidedown**

Additional: Logos left intact



#114 [Information om Fågelbär vid cykelled.](#)

Type G: **red plank, wood knots, cracked post**

Additional: Logos left intact



#115 [Avenbok](#)

Type F: **three fresh wood planks, wood knots (left and right side), wooden post "1", wooden post "2", upsidedown**

Additional: Logos left intact.



#116 [Information om Oxel](#)

Type F: **three fresh wood planks, wood knots (left and right side), wooden post "1", wooden post "2", upsidedown**

Additional: Logos left intact



#117 [Faktaskylt om vårtbjörk](#)

Type E: **thick aluminum edge, dent (top right), scratches (bottom), scratches (lower right side), printout smudging (bottom right), base visible**

Additional: SiS logo removed, OK logo added.

Pre-punched printer paper (holes visible on the left side)



#118 [Faktaskylt om Glasbjörk](#)

Type E: **thick aluminum edge, dent (top right), scratches (bottom), scratches (lower right side), printout smudging (bottom right), base visible**

Additional: SiS logo removed, OK logo added.  
(if you look closely on the top left section of the sign you can see a big black smudge and black lines somewhat bleeding through underneath the drawing of the leaves. It's the same shape and lines as the picture on #121 below.)



#119 [Jakt och friluftsliv i skogen](#)

Type E: **thick aluminum edge, dent (top right), scratches (bottom), scratches (lower right side), printout smudging (bottom right), base visible**

Additional: SiS logo removed, OK logo added. Identical duplicate with #102



#120 [Faktaskylt om Gran](#)

Type E: **thick aluminum edge, dent (top right), scratches (bottom), scratches (lower right side), printout smudging (bottom right), base visible**

Additional: SiS logo removed, OK logo added.



#121 [Jättarna i Hässlehurst](#)

Type E: **thick aluminum edge, dent (top right), scratches (bottom), scratches (lower right side), printout smudging (bottom right), base visible**

The text and story on this sign is directly copied from this [site](#), story #5 (picture taken from story #2). There are no official signs with these stories printed or put up in any capacity by the owners of the web site.



#122 [Faktaskylt Gran](#)

Type A: **white post**, two black dots, **half circle smudge**, gray smudge, scratch on the left side of frame

Additional: SiS logo removed, OK logo added. Identical duplicate with #54



#123 [Faktaskylt Tall](#)

Type A: **white post**, two black dots, half circle smudge, gray smudge, scratch on the left side of frame

Additional: SiS logo removed, OK logo added. Identical duplicate with #26 and #30



#124 [Faktaskylt Druvek](#)

Type A: **white post**, two black dots, half circle smudge, **gray smudge**, scratch on the left side of frame

Additional: SiS logo removed, OK logo added. Identical duplicate with #28, #53 and #134 (cropped).



#125 [Skogen berättar om vår historia](#)

Type E: **thick aluminum edge**, **dent (top right)**, scratches (bottom), scratches (lower right side), printout smudging (bottom right), **base visible**

Additional: SiS logo left intact.



#126 [Faktaskylt om Glasbjörk](#)

Type D: **metal post, scratch mark on top left and right side of post, black mark on top right corner of sign, "bubbly" edges**

Additional: SiS logo removed, OK logo added.

Identical duplicate with #69

#127 [Dannfeltska gravkapellet](#)

Type A: **white post, two black dots, half circle smudge, gray smudge, scratch on the left side of frame**

Additional: OK logo added. Pre-punched printer paper used (holes on left side). Olofström official signage is printed with a pink border on the left.



#128 [Infoskylt Olofström Museum](#)

Type A: **white post, two black dots, half circle smudge, gray smudge, scratch on the left side of frame**

Additional: No OK logo. Official signs made by Olofström county has a pink border on the left.

#129 [Faktaskylt om Glasbjörk](#)

Type A: **white post, two black dots, half circle smudge, gray smudge, scratch on the left side of frame**

Additional: SiS logo removed, OK logo added. Identical #27





#130 [Informationsskylt om Rönn](#)

Type H: burgundy background, nail position on top part, stripe on wood post

Additional: Logos left intact. Pre-punched printer paper used (holes on left side).

#131 [Faktaskylt om Glasbjörk](#)

Type H: burgundy background, nail position on top part, stripe on wood post

Additional: Logos left intact. Pre-punched printer paper used (holes on left side).



#132 [Biologisk mångfald i skogen](#)

Type A: white post, two black dots, half circle smudge, gray smudge, scratch on the left side of frame

Additional: SiS logo removed, OK logo added. Identical duplicate with #133

#133 [Biologisk mångfald i skogen](#)

Type A: white post, two black dots, half circle smudge, gray smudge, scratch on the left side of frame

Additional: SiS logo removed, OK logo added. Identical duplicate with #132





#134 [Faktaskylt Druvek](#)

Type A: **white post**, two black dots, half circle smudge, gray smudge, scratch on the left side of frame

Additional: SiS logo removed, OK logo added. Identical with #28, #53 och #124

#135 [Faktaskylt Skogslönn](#)

Type A: **white post**, **two black dots**, **half circle smudge**, gray smudge, scratch on the left side of frame

Additional: SiS logo left intact, OK logo added.



#136 [Infoskylt Bok](#)

Type A: **white post**, two black dots, half circle smudge, **gray smudge**, scratch on the left side of frame

Additional: SiS logo removed, OK logo added.

#137 [Faktaskylt om Bok](#)

Type D: **metal post**, **scratch mark on top left and right side of post**, **black mark on top right corner of sign**, "bubbly" edges

Additional: SiS logo removed, OK logo added.





### #138 [Faktaskylt om Bok](#)

Type C: metal post, white "dotted" marking on the post, black spots on bottom edge

Additional: SiS logo left intact.

### #139 [Faunadepå](#)

Picture from a real nomination used to create a fake duplicate Wayspot in this location. Real location at [Blåsgylet](#).

### #140 [Runsten](#)

Completely fake Watspot. The picture is taken of a computer screen and used in a false location here. No rune stones in this location. [This rune stone](#) is located in Uppsala in the nature preserve Hågadalen-Nåsten. Real Wayspot [here](#).

### #141 [Faktaskylt Gråal](#)

Type I: white post, triple dots

Additional: Logos left intact. OK logo added.

### #142 [Informations skylt klibbal](#)

Type B: white post, missing sliver, black dot, three grey stripes on right side of post, top left corner bent upwards

Additional: SiS logo removed. Weird color misprint (the PDF is in full color while this print is purple and oddly formatted).





#### #143 [Faktaskylt Lärk](#)

Type I: **white post, triple dots**

Additional: Logos left intact, OK logo added. Pre-punched printer paper used (holes on left side).

#### #144 [Om du går vilse i skogen](#)

Type I: **white post, triple dots**

Additional: SiS logo removed, OK logo added.



#### #145 [Faktaskylt En](#)

Type A: **white post, two black dots, half circle smudge, gray smudge, scratch on the left side of frame**

Additional: SiS logo removed, OK logo added.



#### #146 [Faktaskylt Hassel](#)

Type A: **white post, two black dots, half circle smudge, gray smudge, scratch on the left side of frame**

Additional: SiS logo left intact, OK logo added.





#147 [Faktaskylt Hassel](#)

Type A: **white post, two black dots, half circle smudge, gray smudge, scratch on the left side of frame**

Additional: SiS logo left intact, OK logo added.



#148 [Skogen har många olika värden](#)

Type D: **metal post, scratch mark on top left and right side of post, black mark on top right corner of sign, "bubbly" edges**

Additional: SiS logo removed, OK logo added.



#149 [Faktaskylt Tall](#)

Type I: **white post, triple dots**

Additional: SiS logo removed, OK logo added.



#150 [Gamla Havhults Torp](#)

Real sign used to create a fake nomination. This sign is somewhere in Kyrkhult, 10km to the northeast, not in Olofström. The bottom left corner says "Kyrkhults Hembygdsförening"



### #151 [Informationen skylt om Mulmholken](#)

Duplicate of #162, mounted on different posts. The screws are not even all the way in. Neither exists in the claimed locations.

### #152 [Skylt om Aspen](#)

Type B: white post, missing sliver, black dot, three grey stripes on right side of post, top left corner bent upwards

Additional: SiS logo removed. Misscolored printout, blue instead of color.



### #153 [Informationen skylt om Rönnen](#)

Type B: white post, missing sliver, black dot, three grey stripes on right side of post, top left corner bent upwards

Additional: SiS logo left intact. Misscolored print, purple with weird boxes top and bottom. Same printout as #166

### #154 [Faunadepå](#)

Real sign used to fake several Wyspots. The real sign used to be located [here](#) but its been pulled up and moved about to create #154 and #161

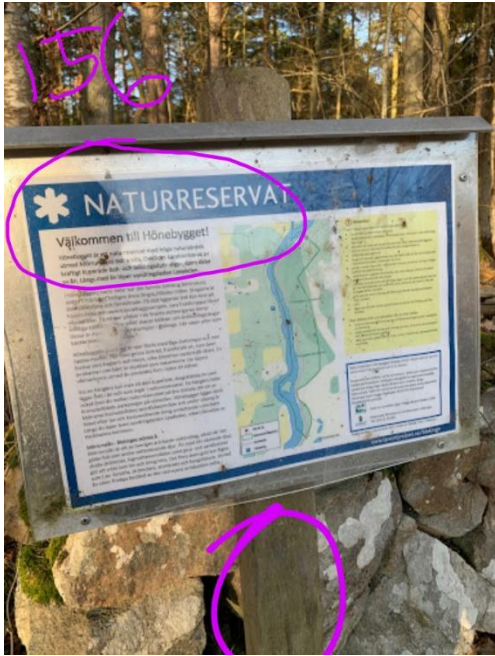


### #155 [Snapphanar](#)

Type B: white post, missing sliver, black dot, three grey stripes on right side of post, top left corner bent upwards

This is a homemade sign, copy pasted from several sources to create a "historical sign" with a very bad layout (everything cramped towards the top left). The first picture is from this [Geocache](#), while the second and the text used comes from [WikiWand](#). This exact sign has been used for #165 and #167 in this report as well.





# #156 [Naturreservat](#)

Real sign used to create a fake Wayspot. There is no nature preserve in this location. The real one is located [here](#)

# #157 [Informations skylt om En busken](#)

Type B: **white post, missing sliver, black dot, three grey stripes on right side of post, top left corner bent upwards**

Additional: SiS logo removed. Very odd print color of a color PDF, starts of as purple and ends in blue. Same misscoloring as #164



# #158 [Informationsskylt om granen](#)

Type B: **white post, missing sliver, black dot, three grey stripes on right side of post, top left corner bent upwards**

Additional: SiS logo removed. Misscolored print, PDF is in full color.

# #159 [Informationsskylt om svampar](#)

Type B: **white post, missing sliver, black dot, three grey stripes on right side of post, top left corner bent upwards**

Additional: All the text on the signpost is directly copied from this [site](#). This sign has the same bad layout cramped on the top left as #155 and #160.

# #160 [Medeltida stenmurar](#)

Type B: **white post, missing sliver, black dot, three grey stripes on right side of post, top left corner bent upwards**

Additional: Same cramped and bad design as #159 above.





#### #161 [Faunadepå](#)

Faked location. The real sign used to be located [here](#) but its been pulled up and moved about to create #154 and #161

#### #162 [Mulmholken](#)

Duplicate of #162, mounted on different posts. The screws are not even all the way in. Neither exists in the claimed locations.

#### #163 [Informations skylt om aspen](#)

Type B: **white post, missing sliver, black dot, three grey stripes on right side of post, top left corner bent upwards**

Additional: SiS logo left intact. Misscolored print, not supposed to be blue. (also about ASK not ASP) Same print as #174.

#### #164 [information om Enbusken](#)

Type B: **white post, missing sliver, black dot, three grey stripes on right side of post, top left corner bent upwards**

Additional: SiS logo removed. Misscolored print, not supposed to be purple and blue. Exactly the same misscoloring as #157



#### #165 [Snapphanar](#)

Type B: **white post, missing sliver, black dot, three grey stripes on right side of post, top left corner bent upwards**

This is a homemade sign, copy pasted from several sources to create a "historical sign" with a very bad layout (everything cramped towards the top left). The first picture is from this [Geocache](#), while the second and the text used comes from [WikiWand](#). It's used for #165 and #167 in this report as well.



#### #166 [Informations skylt om rönnen](#)

Type B: white post, missing sliver, black dot, three grey stripes on right side of post, top left corner bent upwards

Additional: SiS logo left intact. Misscolored. Same printout as #153

#### #167 [Informations skylt om snapphanar](#)

Type B: white post, missing sliver, black dot, three grey stripes on right side of post, top left corner bent upwards



This is a homemade sign, copy pasted from several sources to create a "historical sign" with a very bad layout (everything cramped towards the top left). The first picture is from this [Geocache](#), while the second and the text used comes from [WikiWand](#). It's used for #165 and #167 in this report as well.

#### #168 [Informationsskylt om mieån](#)

Real sign used to create a fake Watspot here. The real sign (with identical picture) is located [here](#).

#### #169 [Sign Faunadepå](#)

Picture from a real nomination used to create a fake here. The real sign (with the same picture, compare wood knots on the right) is located [here](#).





# #170 [Biologisk återställning](#)

Picture from a real nomination used to fake this one. The real sign (with identical picture) is located [here](#).

# #171 [Milsten 1675](#)

Fake location. This mile stone is located in Jönköping, waaaaay north. The real location (with identical picture) is located [here](#). No marker present for a mile stone in the claimed location on Fornsök (should be a red or blue marker at the location, because all mile stones are heritage protected by law.) (second picture).



# #172 [Vårtbjörk](#)

Type J: **wood sign, several wood knots, wood knots on post, sliver missing in bottom right corner**

Additional: SiS logo left intact.

# #173 [Faunadepå](#)

Type J: **wood sign, several wood knots, wood knots on post, sliver missing in bottom right corner**

This sign is identical with #185





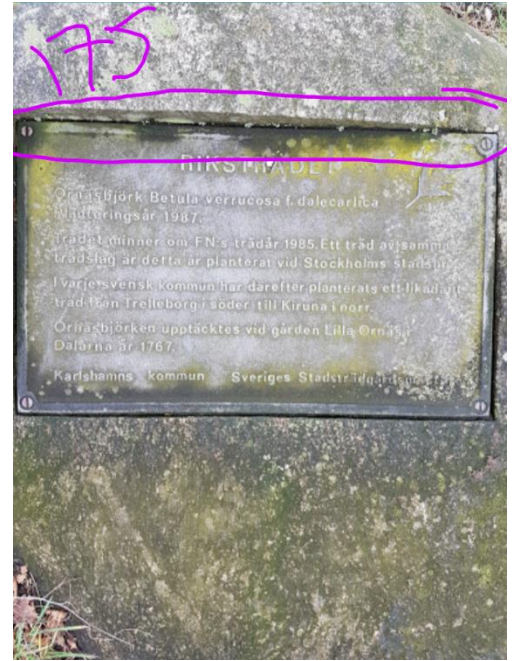
#174 [Informations skylt om asken](#)

Type B: **white post, missing sliver, black dot, three grey stripes on right side of post, top left corner bent upwards**

Additional: SiS logo left intact.  
Misscolored print. Same print as #164

#175 [Riksträd](#)

Real plaque used here to create a fake nomination. A Riksträd is planted in a public park or similar, not in a wooded area behind a suburb. The real location is located in Karlshamns harbor [here](#). In the real location the tree is visible behind the plaque. The circled dent in the rock above the plaque is clearly visible in the real location.



#176 [Ask](#)

Type K: **fresh wood frame, wood knots**

Additional: SiS logo left intact

#177 [Stjälkek](#)

Type K: **fresh wood frame, wood knots**

Additional: SiS logo left intact.





#### #178 [Harmonirundan](#)

Picture from a real Wayspot used to create a fake here. The real one is located [here in Torup](#)



#### #179 [Gåendeplanka och Simtag i luften](#)

The picture from a real nomination is used to create a fake here. The real one is located in Prästmarken [here](#).

#### #180 [Upphopp och sprattelgubbe](#)

Real sign used for another fake nomination in this area. The real one is located in Prästmarken, [here](#).



#### #181 [Mulmholk](#)

Forth fake in the same area using a picture stolen of off a real nomination. The real one is in Elleholm, [located here](#).



#### #182 [Informationsskylt om Gran](#)

Type J: **wood sign, several wood knots, wood knots on post, sliver missing in bottom right corner**

Additional: SiS left intact.





### #183 [Groddjur](#)

Real sign used to fake this Wayspot. This one is also stolen from Prästmarkens nature area. [Located here](#). Picture cropped on purpose to hide the “Åstorp” logo at the bottom.

### #184 [Nämndeman Per Svenssons skohus](#)

Real memorial picture stolen to create a fake nomination here. The real one is outside of Olofström. [Located here](#). Real location verified on Fornsök (picture below) with blue marker (“Minnessten” means memorial marker and this is a memorial of Per Svensson who built a school there in the 1830s) Used for #188 as well

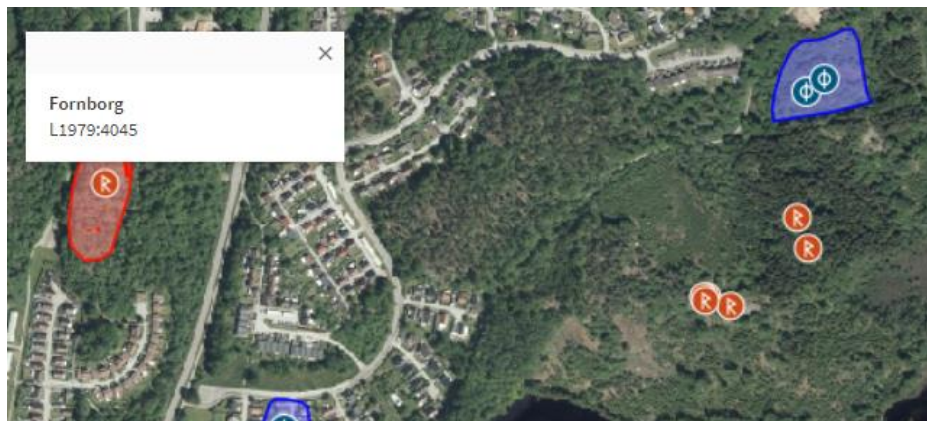
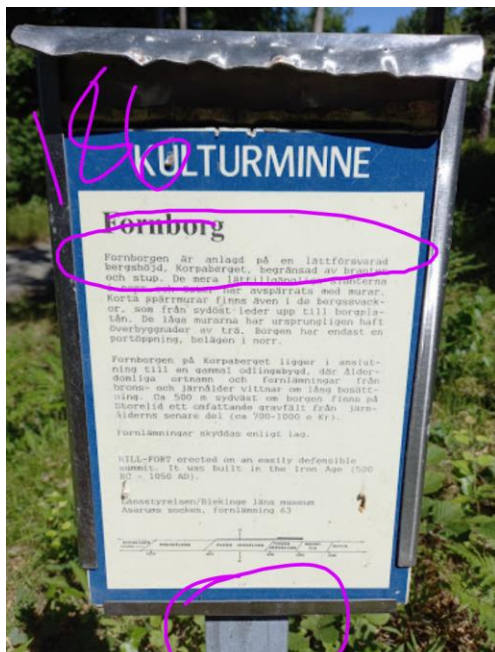


### #185 [Faunadepå](#)

Type J: **wood sign, several wood knots, wood knots on post, sliver missing in bottom right corner**

This sign is identical with #173





#### #186 [Fornborg](#)

Real sign used to fake this Wayspot. The real Fornborg is [located here](#), marked on Fornsök with a red marker. Used for #187 as well.

#### #187 [Fornborg](#)

The SAME sign used again (it even has the same bird shit on it). The real Fornborg is [located here](#), marked on Fornsök with a red marker. Same as #186



#### #188 [Nämndeman Per Svenssons skolhus](#)

Once again used to create a fake Wayspot. As already stated in #184 the real one is outside of Olofström. [Located here](#). Real location verified on Fornsök with blue marker ("Minnessten" means memorial marker and this is a memorial of Per Svensson who built a school there in the 1830s) Used for #184 as well



#### #189 [Gasten i Kyrkhult](#)

Type E: thick aluminum edge, dent (top right), scratches (bottom), scratches (lower right side), printout smudging (bottom right), base visible



The text and story on this sign is directly copied from this [site](#), story #1. No official signage by the owners of the web site has ever been made.



#190 [Laxleden](#)

Type B: **white post, missing sliver, black dot, three grey stripes on right side of post, top left corner bent upwards**

Additional: Looks nothing like the real signs about Laxleden. (real sign to the right as example)  
Layout is also faulty, being crammed in the top left, with the wrong map.



#191 [Kyrkhults kyrkas historia](#)

Type E: **thick aluminum edge, dent (top right), scratches (bottom), scratches (lower right side), printout smudging (bottom right), base visible**

**OBS!** This sign is upside-down compared to the other E signs. The dent is bottom left and scratches on top. #193 and #194 is upside-down as well.

Pictures and text directly lifted from this [web page](#) about the church. No official signage exists.



#192 [Kvarnlyckan](#)

Real nomination picture used to fake this Wayspot. Picture stolen from [this nomination](#) and the text at the bottom reading Kulturstigen Mariagården has been removed to hide the real origin of the sign (real sign with logo intact below the fake nomination as comparison).



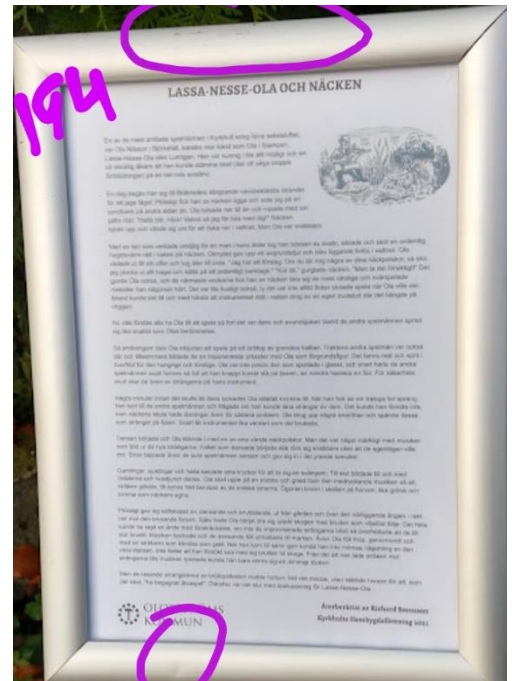


### #193 [De huvudlösas gudstjänst](#)

Type E: **thick aluminum edge, dent (top right), scratches (bottom), scratches (lower right side), printout smudging (bottom right), base visible**

**OBS!** This sign is upside-down compared to the other E signs. The dent is bottom left and scratches on top. #191 and #194 is upside-down as well.

The text and story on this sign is directly copied from this [site](#), story #7. No official signage with these stories has ever been created by the owners of the web site.



### #194 [Lassa-Nesse-Ola och Näcken](#)

Type E: **thick aluminum edge, dent (top right), scratches (bottom), scratches (lower right side), printout smudging (bottom right), base visible**

**OBS!** This sign is upside-down compared to the other E signs. The dent is bottom left and scratches on top. #191 and #193 is upside-down as well

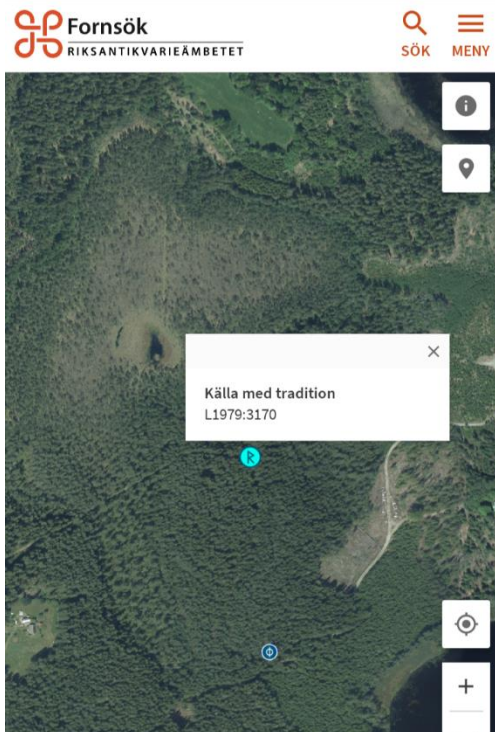
The text and story on this sign is directly copied from this [site](#), story #2. No official signage with these stories has ever been created by the owners of the web site.



### #195 [Hälsokällan](#)

This is a fake nomination of a real place. The real källa (well) called Tulseboda Källa is located [here](#). The location is marked on Google maps as well as [Olofströms Naturs web site](#) (with many pictures of the well and a map at the bottom of the article). The picture is taken directly off a computer as well.

On the left is a screen shot of Fornsök showing the real källa marked out as a protected heritage.





#196 [Historisk information om Kyrkhult](#)

Type E: **thick aluminum edge, dent (top right), scratches (bottom), scratches (lower right side), printout smudging (bottom right), base visible**

**OBS!** This sign is tilted compared to the other E signs. The dent is on the right and scratches on the left.



The real sign looks like this (picture on the right with pointy roof) and is displayed in a little housing. The fake is most likely a printout of the the picture (top right) available online. Real location is [here](#).



#197 [Kyrkhults sockens historia](#)

Type E: **thick aluminum edge, dent (top right), scratches (bottom), scratches (lower right side), printout smudging (bottom right), base visible**

The text on the sign is lifted directly from the [web page](#) belonging to Kyrkhults Hembyggsförening.



#198 [Björk](#)

Real picture of a real nomination used to create a fake here. The real one is part of a nature trail in Landskrona (see pictures of #199) where the logo in the bottom right corner has been removed to hide origin. Not been able to locate the real location of this sign but a comparison of multiple signs at the [real location](#) of #199 should verify that this is one in that series (same colors, border etc)



### #199 [Rönna](#)

Real picture of a real nomination used to create a fake here. Part of a nature trail outside Landskrona where the logo in the bottom right corner has been removed to hide the origin of the sign. Compare the photo used for the fake and the identical photo (right) on the [real nomination](#) here and the shabby removal of the logo is obvious.

### #200 [Tulseboda vandringsleder](#)

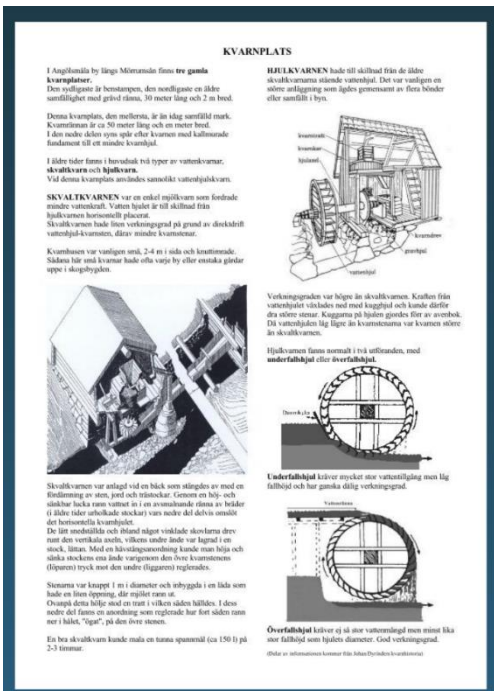
Missplaced on purpose to create additional Wayspots. The real location is in the newly constructed red white and green shelter building (picture bottom right) at 56.352515,14.592056 (replacing the wooden one (pictured bottom left) that is visible on Street view). Compare white and red planking behind the signs to the new structure. Additionally, the red markings on the maps of both #200 and #20 place their locations at the info shelter (not in the forest to the west) if you compare with a satellite view of the area.



### #201 [Karta över Tulseboda brunn](#)

Missplaced on purpose to create additional Wayspots. The real location is in the newly constructed red white and green shelter building (picture bottom right) at 56.352515,14.592056 (replacing the wooden one (pictured bottom left) that is visible on Street view). Compare white and red planking behind the signs to the new structure. Additionally, the red markings on the maps of both #200 and #20 place their locations at the info shelter (not in the forest to the west) if you compare with a satellite view of the area.





## #202 [Lidl lekplats](#)

Fake nomination. There is no playground structure behind this building, only their loading dock. Picture of street view (on the right) shows a low beige building, no windows from top to bottom. Additional picture (left) shows the loading dock and container that are clearly visible on satellite in the claimed location.

## #203 [Information om Hassel.](#)

Wrong sign (a printout from SiS) put up on signpost belonging to a historical information trail.

This is sign C7 (as seen circled at the bottom) and should hold information about a "Kvarnplats" (bottom left picture) not about "Hassel".

Supporting this claim is the signs C6 and C8 on "either side" of this one on the trail (a bit to the north and south) showing their correct historical signs for "Östra Härnäs by, norra delen" and "Röshults By", respectively. (Both signs pictured on the next page)

[This is a list](#) of all the signs along the trail, showing "Kvarnplats" (page 88) in between "Östra Härnäs by, norra delen" (page 87) and "Röshults By" (page 89), being additional proof that this sign has been manipulated.

(More information on the next page.)





This is sign C6 (left) and C8 (right) with the real information on them, showing how they're supposed to look like.

Below them is the corresponding sides on the web page displaying the same text and information as the signs, as well as the side of the document showing their page number and order they are placed in, once again putting “Kvarnplats” in the location that’s been tampered with.

[illegible]



#### #204 [Faktaskylt Syren](#)

Type C: metal post, white "dotted" marking on the post, black spots on bottom edge

Additional: Homemade sign ([text and second picture directly from the Wikipedia page](#)). The laminated sheet is sticking out along the bottom. Picture used for #37 and #205 as well, identical duplicates.

#### #205 [Faktaskylt Syren](#)

Type C: metal post, white "dotted" marking on the post, black spots on bottom edge



Additional: Homemade sign ([text and second picture directly from the Wikipedia page](#)). The laminated sheet is sticking out along the bottom. Picture used for #37 and #204 as well, identical duplicates.

#### #206 [Faktaskylt om Lind](#)

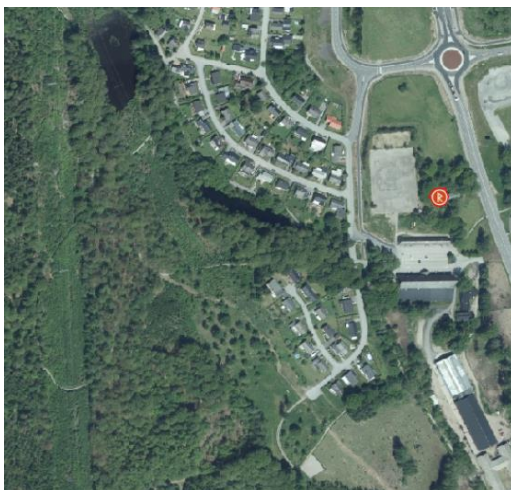
Type E: thick aluminum edge, dent (top right), scratches (bottom), scratches (lower right side), printout smudging (bottom right), base visible

Additional: SiS logo removed, OK logo added.



#### #207 [Janssons torp](#)

Real sign used to create a fake location here. This is another Kyrkhult sign placed in Olofström. There is nothing heratige protected on this site at all (se picture on the right, there should be a red or blue marker for something made by Riksämbetsantikvariatet (bottom right of the sign)) and the sign clearly states Kyrkhults hembygdsförening in the bottom left.





## #208 [Gråtorpet](#)

Real sign used to create a fake Wayspot at this location. This sign is also placed in Olofström, yet its marked by Kyrkhults hembygdsförening, despite being [located here](#), as seen on the Swedish heritage map (Fornsök), under "Övrig Länninginformation" and "Namn på lämning" it says #Gråtorpet". No location marked on the claimed location on Fornsök (see picture in #207

## #209 [Lassagubbens stuga](#)

Fake nomination. This sign is in Kyrkhult (bottom left says Kyrkhults hembygdsförening) not Olofström. This is the real location marked on [Fornsök](#). Underneath "Övrig Länninginformation" and "Namn på lämning" it states "Lassa-Svenos stuga" - the man living there was named Sven and called "Lassa-Sven"/"Lassagubben". "Stuga" means cottage. Duplicate with #23



## #210 [Parti av holje park](#)

Type A: **white post, two black dots, half circle smudge, gray smudge, scratch on the left side of frame.**

Home made sign, layout crowded in the top left. Black and white print. Real information signs in Olofström have a pink border on the left and are printed on plastic boards in full color.



## #211 [Skylt vid Halens elljusspår](#)

Real nomination used to create a fake wayspot in this location. The real sign is located [here](#). Feel free to compare the rock, tree, green weed by the post or two white pins on the board to verify that it is two different pictures of the same sign.



#212 [Karpdammarna](#)

Homemade fake sign, layout crowded to left and in black and white. Pre-punched printer paper loosely put in a frame that normally holds information about the nature preserve in full color. Real preserve signs also have a blue border (compare to #213 on the right).



#213 [Välkommen till Halen](#)

No nature preserves signage located here. On the map (middle right picture) the locations of the real signs are marked with P (there you'll find a parking lot, information signs about the preserve and other facilities). No sign is located in the area marked by the blue circle where the fake Wayspot is claimed to be.

#214 [Skylt Rådjursvägen](#)

Fake duplication using the sign of a real location. Feel free to look at the wood knots along the bottom as well as the trees in the background and compare them to the real sign (pictured bottom left). The real sign is located [here](#).



There is no sign for the nature preserve in the claimed location marked with a blue circle (see part of the preserve map pictured in the bottom right).





## #215 [Faunadepå i Hesslehult](#)

Fake Wayspot using a picture from a real one. It's a cropped duplicate using the sign from the [faunadepå at Smålandsgatan](#). The big black cross in spray paint on both signs make this glaringly obvious.

And that's it! This blatant abuse has been going on for months and just kept on escalating the longer they got away with it, to the point of at least one picture being used for 4 (!) different Wayspots and the submitters not even bothering to try and hide pre-punched paper anymore...



Please take this seriously because the misuse of the system is rampant and glaringly obvious by now. To end this saga, a couple of "honorary mentions" – things that have showed up in Wayfarer in the fake-riddled areas but as of yet has not been approved or got rejected.

- #1. "Informations skylt om Mätta träd" – aside from being BRUTAL misspelled ("Informationsskyt om (att) mäta träd" – the picture is stolen from the [same source](#) as used for #21 and #57 in this report.
- #2 "Sten" - This nomination used the picture of a [real Wayspot](#) located in Klågerup (the logo in the bottom right has been edited away (badly) to try and hide the real location.

### Should this be a Wayspot?

In your best judgment, would this nomination be a good addition?



Street Address: Buskelundsvägen 147, 375 91 Mörrum, Sverige

☆☆☆☆☆

### Should this be a Wayspot?

In your best judgment, would this nomination be a good addition?



Street Address: Dagsländevägen 38, 374 51 Asarum, Sverige

☆☆☆☆☆

### Title and Description

Title and description should not contain inappropriate text. Description is not required.

Informations skylt om Mätta träd

### Title and Description

Title and description should not contain inappropriate text. Description is not required.

Sten

Sten en del av ordstigen.

