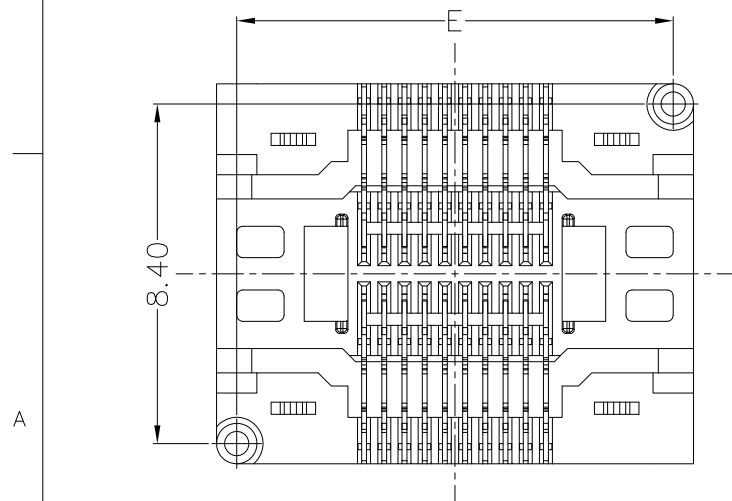
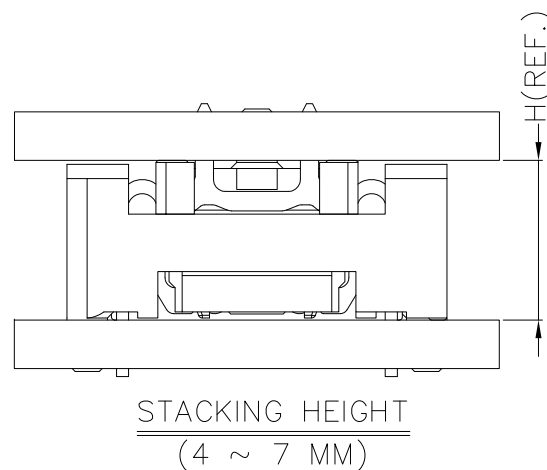
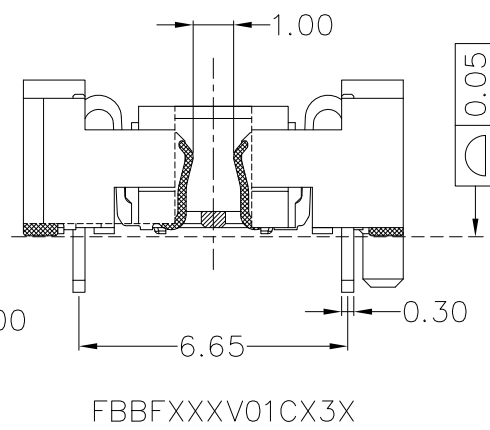
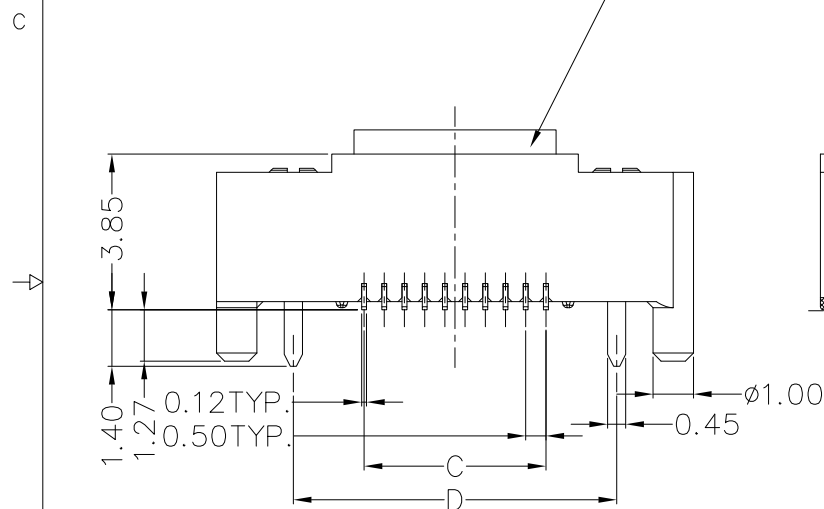
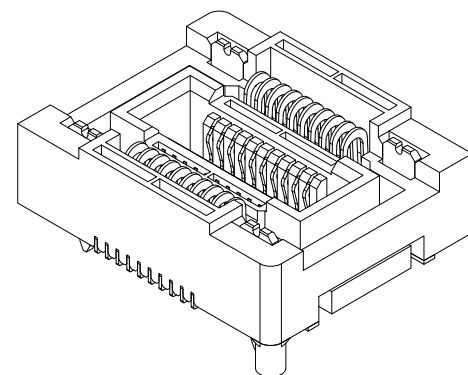
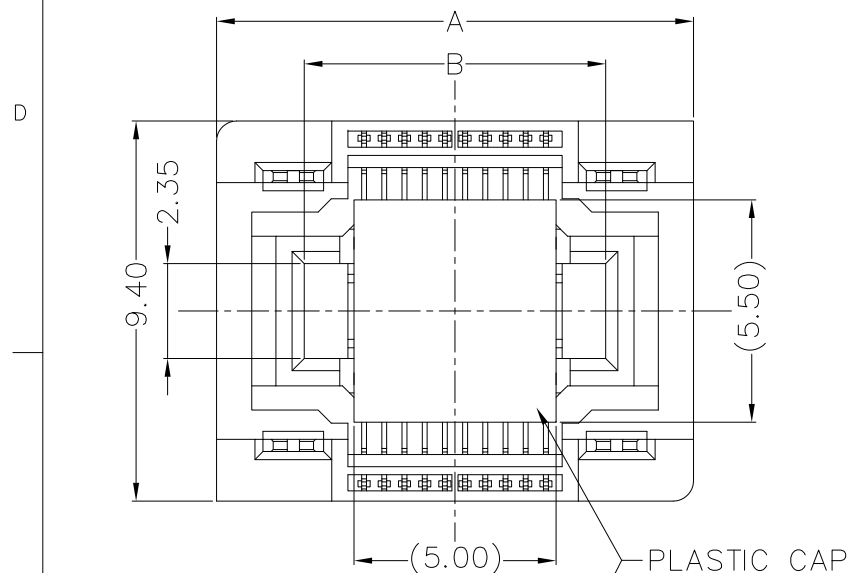


This document is the property of Amphenol Corporation and is delivered on the express condition that it is not to be disclosed, reproduced or used, in whole or in part, for manufacture or sale by anyone other than Amphenol Corporation without its prior consent, & that no right is granted to disclose or to use any information in this document.

# CUSTOMER DRAWING

REVISIONS				
SYM	ECN	DESCRIPTION	DATE	APPROVED
1	HKXXXX	NEW RELEASE	01/11/17	IP
2	HKXXXX	ADDED SHEET 2	01/20/17	IP
3	HKXXXX	MODIFIED PCB LAYOUT	04/06/17	IP
4	HKXXXX	UPDATE SPEC.	10/10/17	IP



### SPECIFICATION:

- Material And Finish: Insulator: High Temperature Thermoplastic UL94 V-0, Black.  
Contact: Copper Alloy  
Gold Plated Over Nickel 1um On Mating Area. Gold Plated Over Nickel 1um On Soldering Tail.  
Board Lock: Copper Alloy, Tin Plated Over Nickel 1um Overall.

- Electrical Specification
  - Contact Resistance: 50m Ohms Max.
  - Insulation Resistance: 1000M Ohms Min.
  - Withstanding Voltage: 100V AC For 1 Minute.
  - Current Rating: 0.5 A Per Pin.
- Mechanical Specification
  - Durability: 50 Times Insertions And Extractions.
- Environmental Specification
  - Humidity: +25 ~ +65°C, 90 ~ 98% RH, 96H.
  - Operating Temperature: -40 ~ +125°C.
  - Reflow Soldering: Peak TMP 260°C Max.
- RoHS Compliant.

### 6. Part No.

FBBF XXX VXX C X 3 X

- 1.30u" Gold Plated On Mating Area
- 2.15u" Gold Plated On Mating Area
- 3. Gold Flash On Mating Area
- With Post And Board Lock
- Sequence Code
- Pin Number

Sequence Code	Stacking (mm) Height	Dim.	Pin No.						
			20	30	40	50	60	70	
01	4								
	5	A	11.80	14.30	16.80	19.30	21.80	24.30	
	7	B	7.46	9.96	12.46	14.96	17.46	19.96	
02	8	C	4.50	7.00	9.50	12.00	14.50	17.00	
	9	D	8.00	10.50	13.00	15.50	18.00	20.50	
	10	E	10.80	13.30	15.80	18.30	20.80	23.30	
	11	H	4/5/6/7/8/9/10/11						



UNLESS OTHERWISE SPECIFIED TOLERANCES	
U.S.	METRIC
.X	+/- 0.50
.XX	+/- 0.30
.XXX	+/- 0.20
FRACTIONS	+/-
ANGLES	+/- 5°

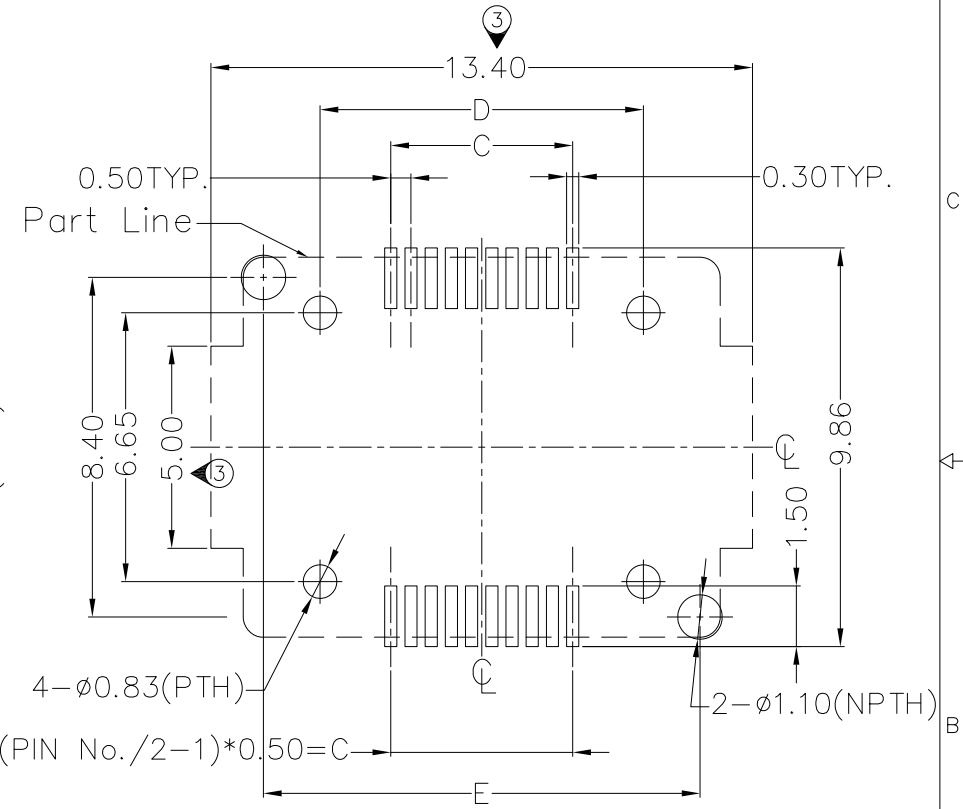
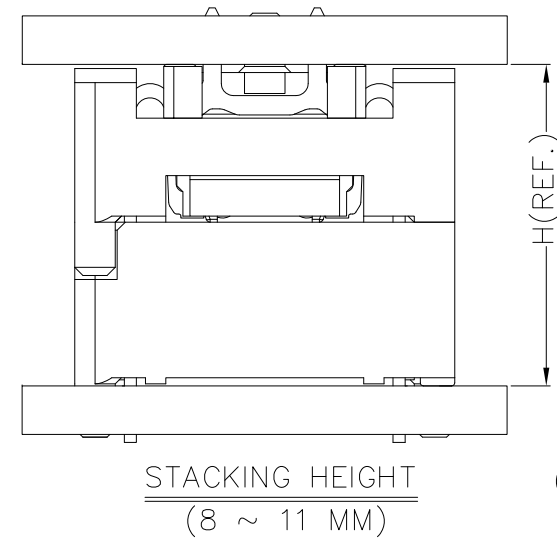
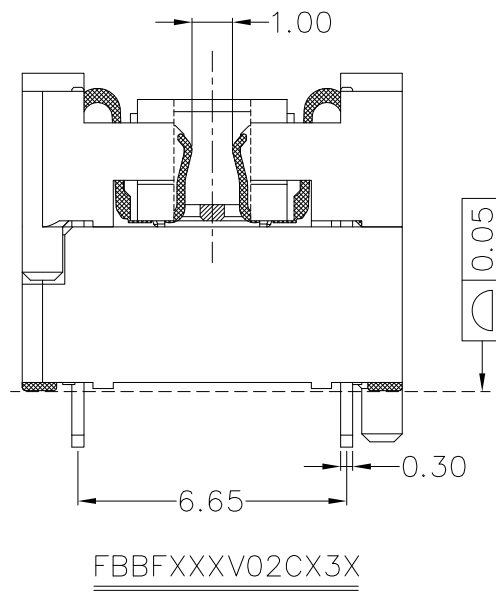
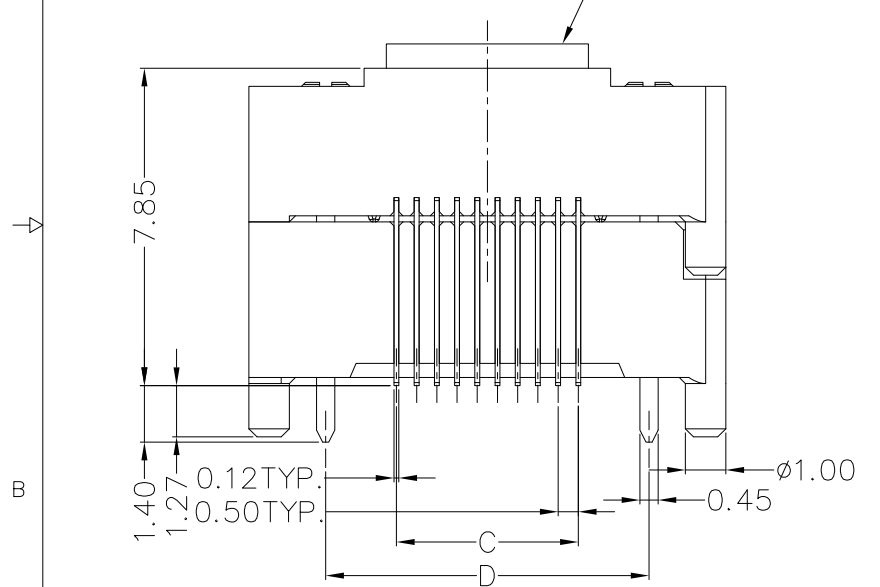
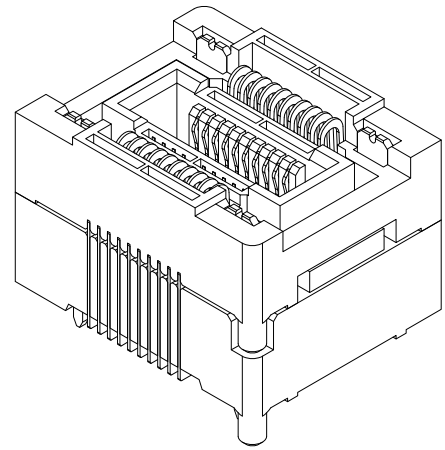
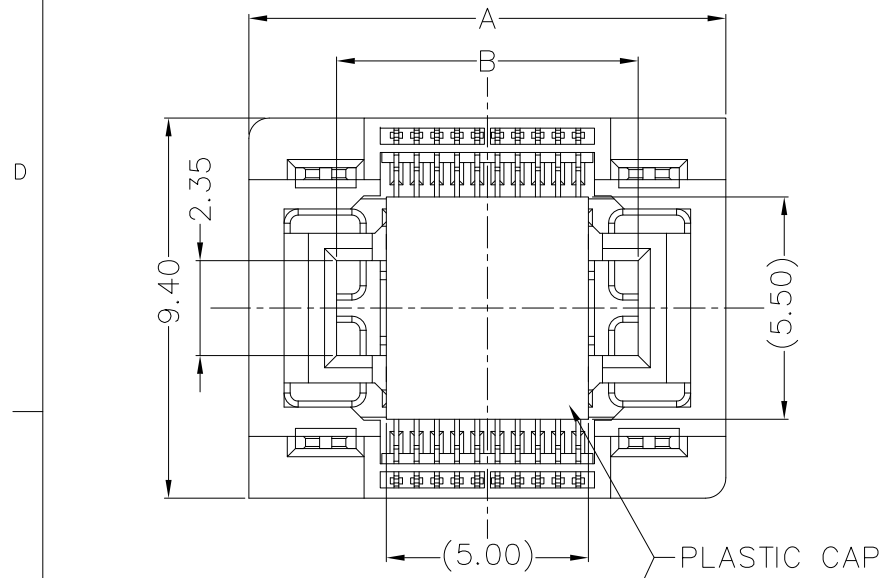
APPROVAL		DATE
DRAWN	Jason.Yue	10/10/17
CHECKED		
CHECKED		
DRAWING FILE :		
ANGLE OF PROJECTION		

Amphenol		
Amphenol East Asia Limited		
TITLE: CUSTOMER DRAWING FOR FLOATING BTB CONNECTOR		
SIZE	DRAWING NO.	REV.
A3	FBBFXXXVXXCX3X	4
SCALE	NONE	SHEET 1 OF 2

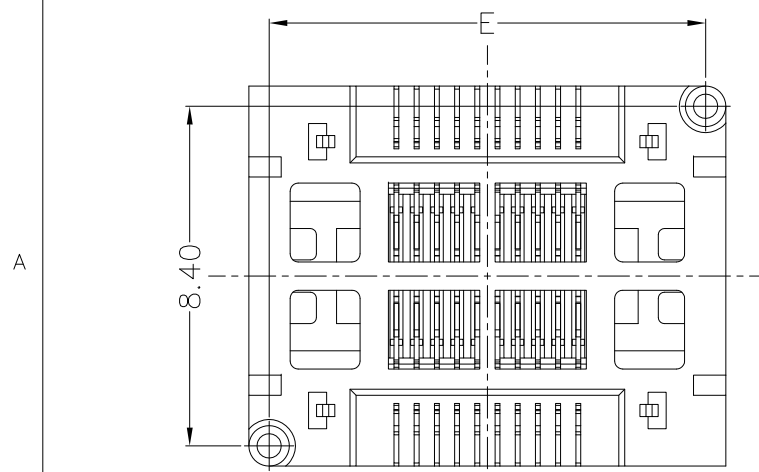
This document is the property of Amphenol Corporation and is delivered on the express condition that it is not to be disclosed, reproduced or used, in whole or in part, for manufacture or sale by anyone other than Amphenol Corporation without its prior consent, & that no right is granted to disclose or to use any information in this document.

# CUSTOMER DRAWING

REVISIONS				
SYM	ECN	DESCRIPTION	DATE	APPROVED
1	HKXXXX	NEW RELEASE	01/11/17	IP
2	HKXXXX	ADDED SHEET 2	01/20/17	IP
3	HKXXXX	MODIFIED PCB LAYOUT	04/06/17	IP
4	HKXXXX	UPDATE SPEC.	10/10/17	IP



\* PTH: Pad Through Hole  
 \* NPTH: No Pad Through Hole  
Recommended PCB Layout  
 (TOL ±0.05)



UNLESS OTHERWISE SPECIFIED TOLERANCES

	U.S.	METRIC
.X	+/-	0.50
.XX	+/-	0.30
.XXX	+/-	0.20
FRACTIONS	+/-	
ANGLES	+/-	5°

FOR MATERIALS AND FINISHES SEE NOTES

REMOVE SHARP EDGES

DIMENSIONS

U.S.	INCHES
(METRIC)	(MM)

APPROVAL		DATE
DRAWN	Jason.Yue	10/10/17
CHECKED		
CHECKED		
DRAWING FILE :		
ANGLE OF PROJECTION		

Amphenol		
Amphenol East Asia Limited		
TITLE CUSTOMER DRAWING FOR FLOATING BTB CONNECTOR		
SIZE	DRAWING NO.	REV.
A3	FBBFXXXVXXCX3X	4
SCALE	NONE	SHEET 2 OF 2