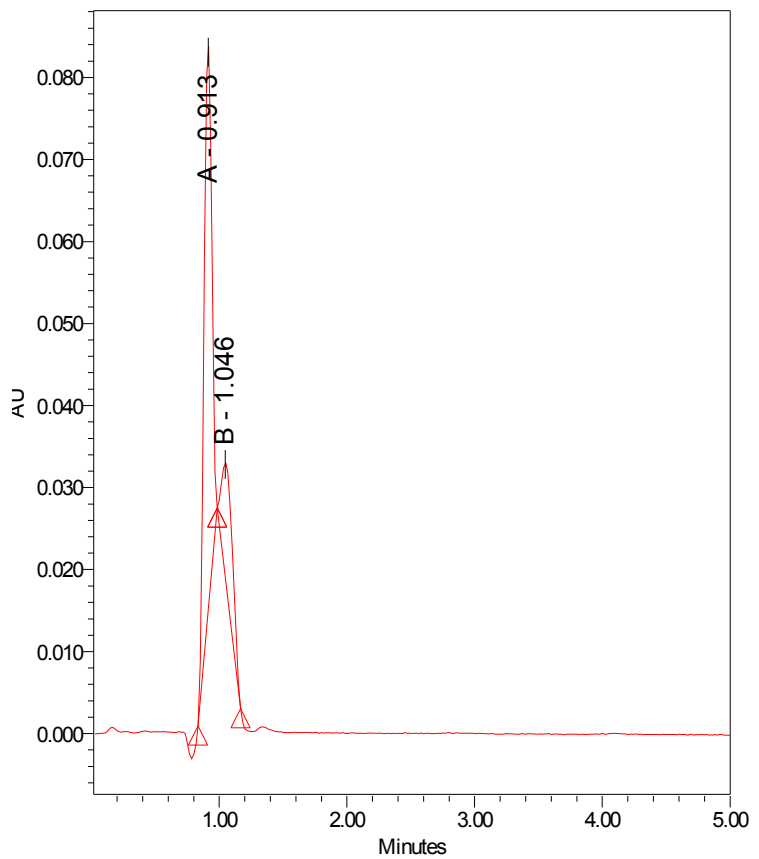


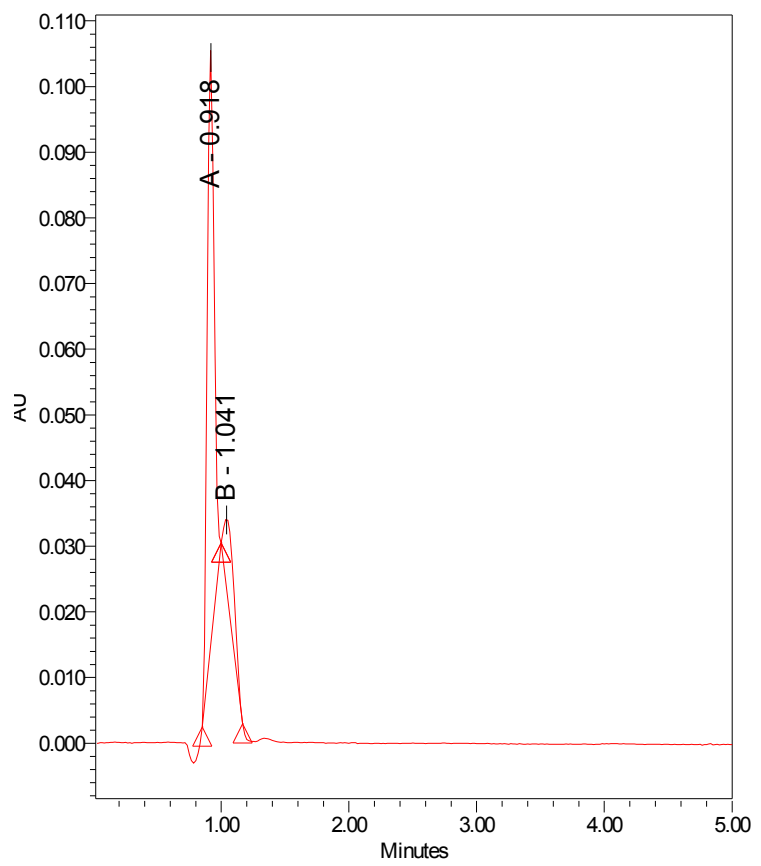
Auto-Scaled Chromatogram



Peak Results

	Name	RT	Area	Height	Amount	Units
1	A	0.913	298074	68349		
2	B	1.046	89119	13962		
3	C	2.855				

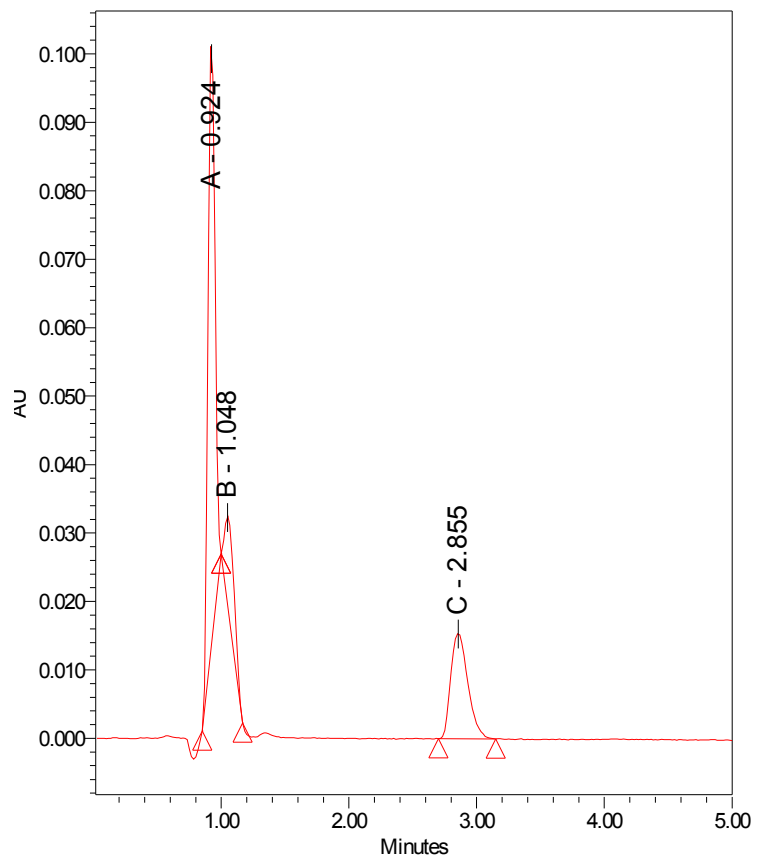
### Auto-Scaled Chromatogram



### Peak Results

	Name	RT	Area	Height	Amount	Units
1	A	0.918	347600	88483		
2	B	1.041	66626	10496		
3	C	2.855				

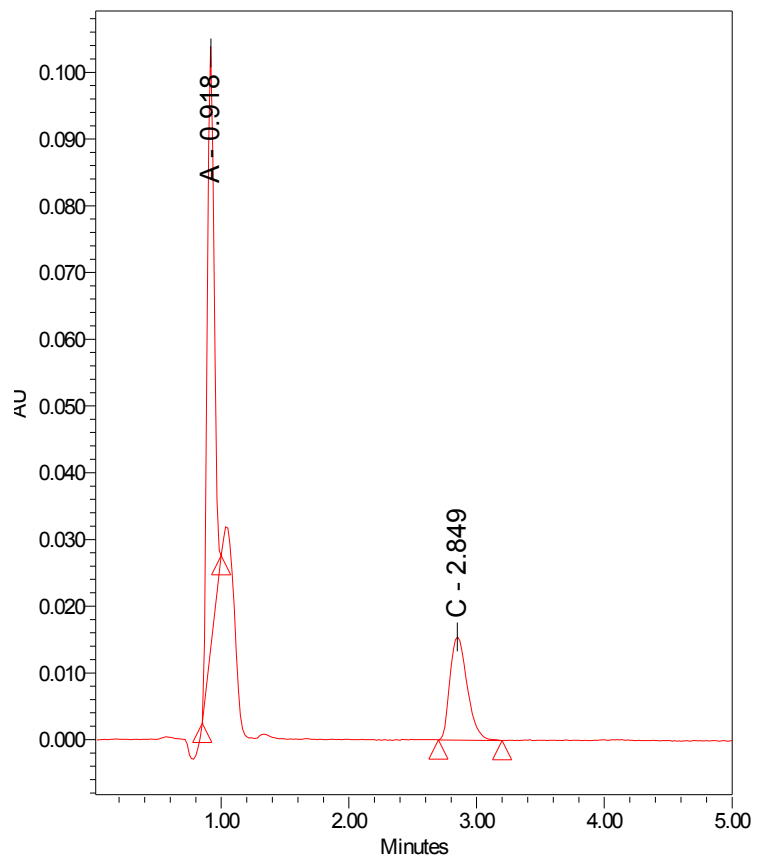
### Auto-Scaled Chromatogram



### Peak Results

	Name	RT	Area	Height	Amount	Units
1	A	0.924	341618	87030		
2	B	1.048	70586	12460		
3	C	2.855	143771	15419		

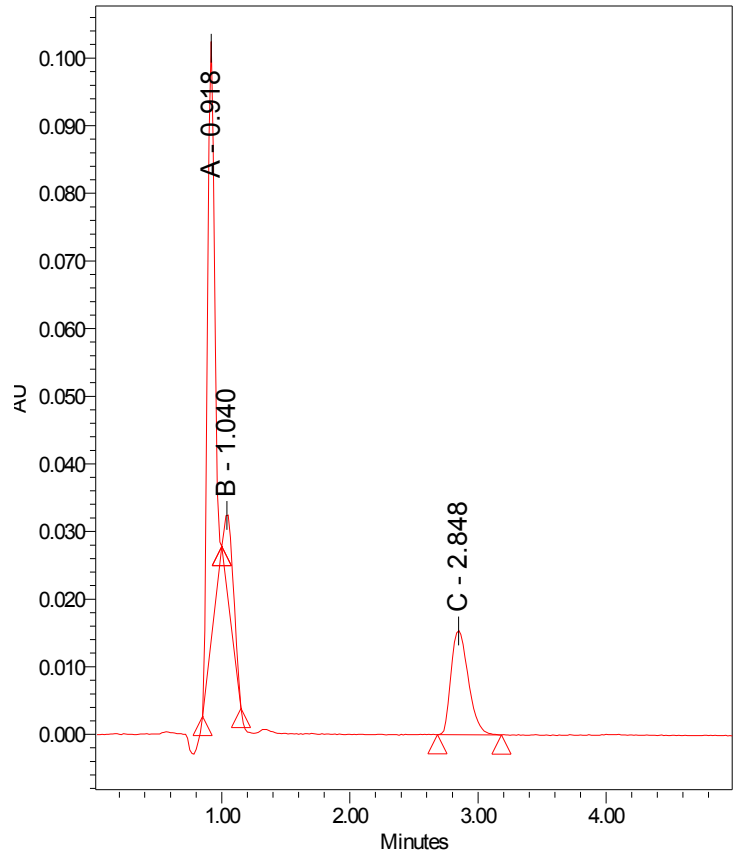
### Auto-Scaled Chromatogram



### Peak Results

	Name	RT	Area	Height	Amount	Units
1	A	0.918	345417	88140		
2	B	1.050				
3	C	2.849	144511	15419		

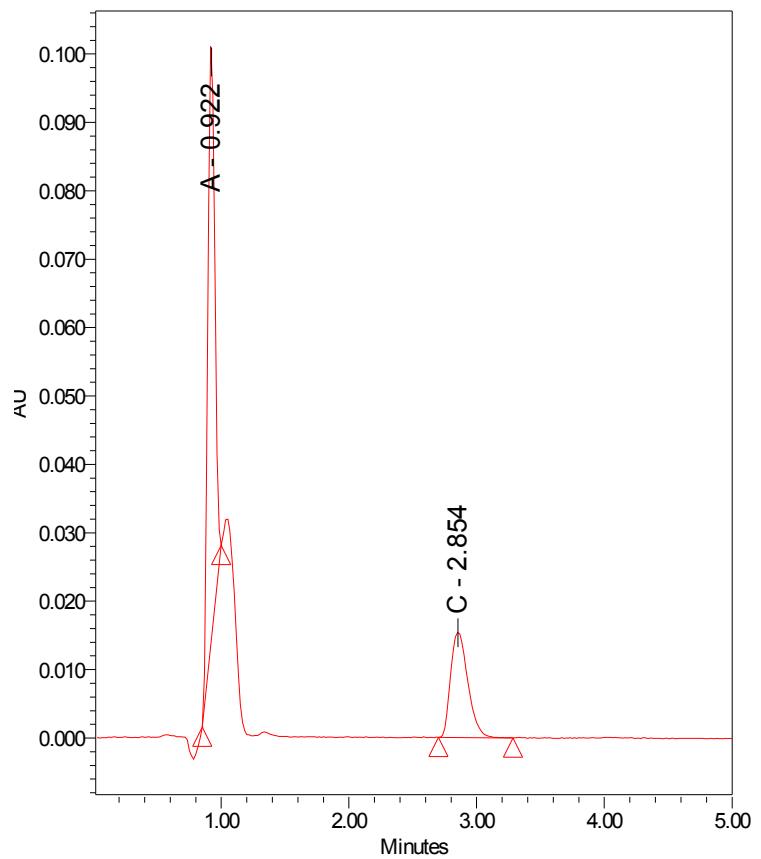
### Auto-Scaled Chromatogram



### Peak Results

	Name	RT	Area	Height	Amount	Units
1	A	0.918	342564	86725		
2	B	1.040	61309	11231		
3	C	2.848	144919	15424		

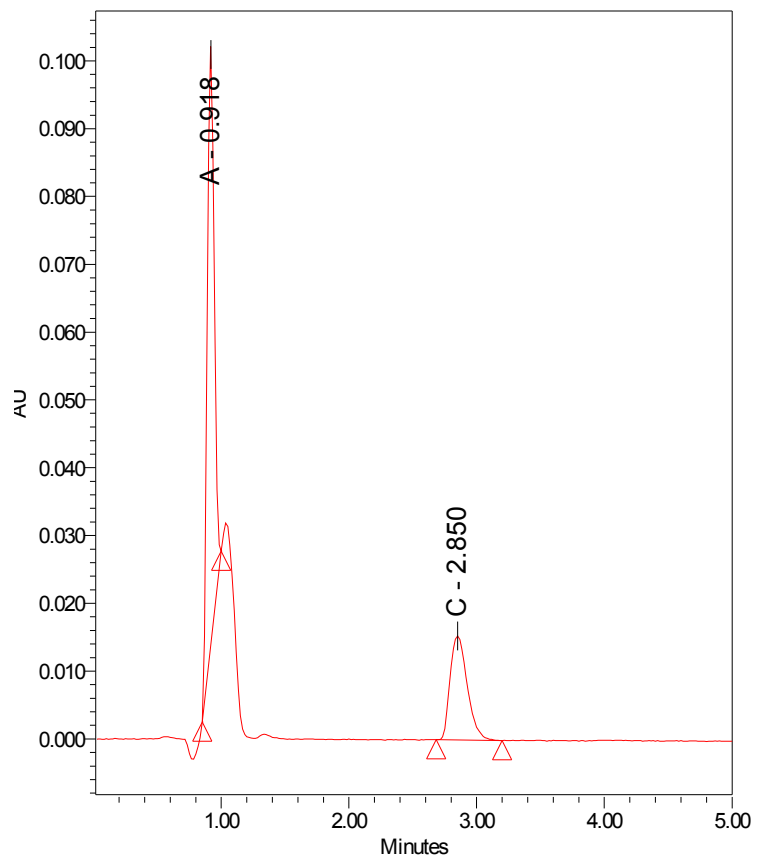
### Auto-Scaled Chromatogram



### Peak Results

	Name	RT	Area	Height	Amount	Units
1	A	0.922	340310	85938		
2	B	1.050				
3	C	2.854	144925	15422		

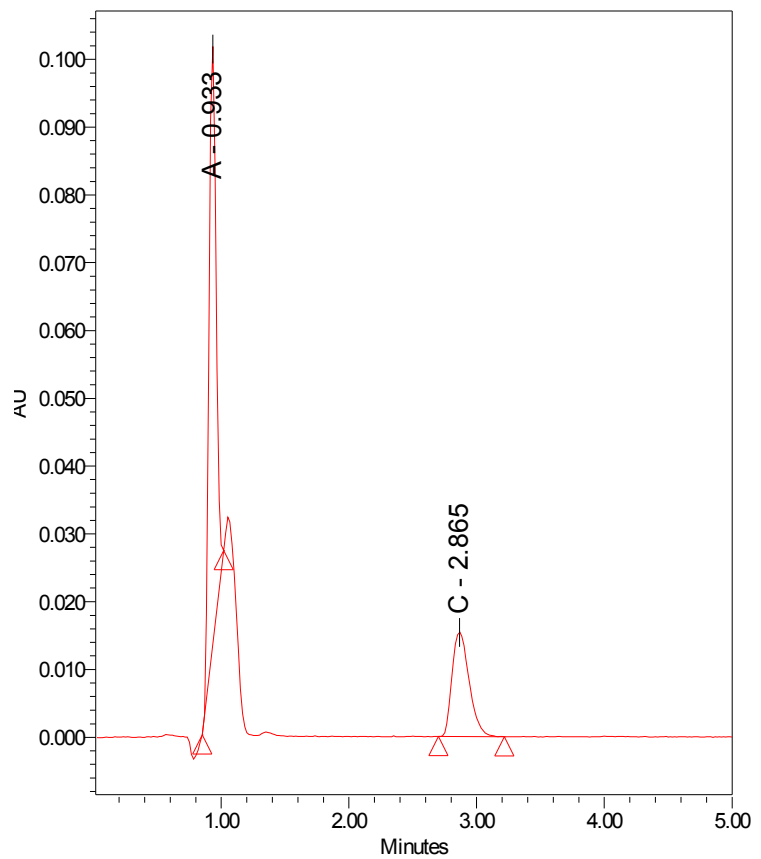
### Auto-Scaled Chromatogram



### Peak Results

	Name	RT	Area	Height	Amount	Units
1	A	0.918	344451	86545		
2	B	1.050				
3	C	2.850	143250	15328		

### Auto-Scaled Chromatogram

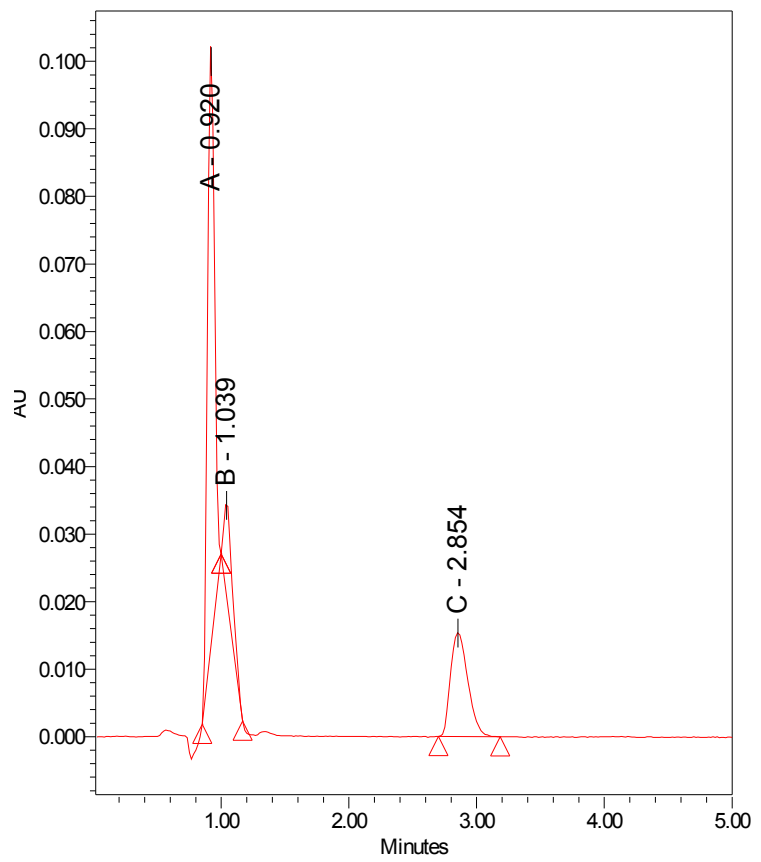


### Peak Results

	Name	RT	Area	Height	Amount	Units
1	A	0.933	345115	86361		
2	B	1.050				
3	C	2.865	144345	15403		



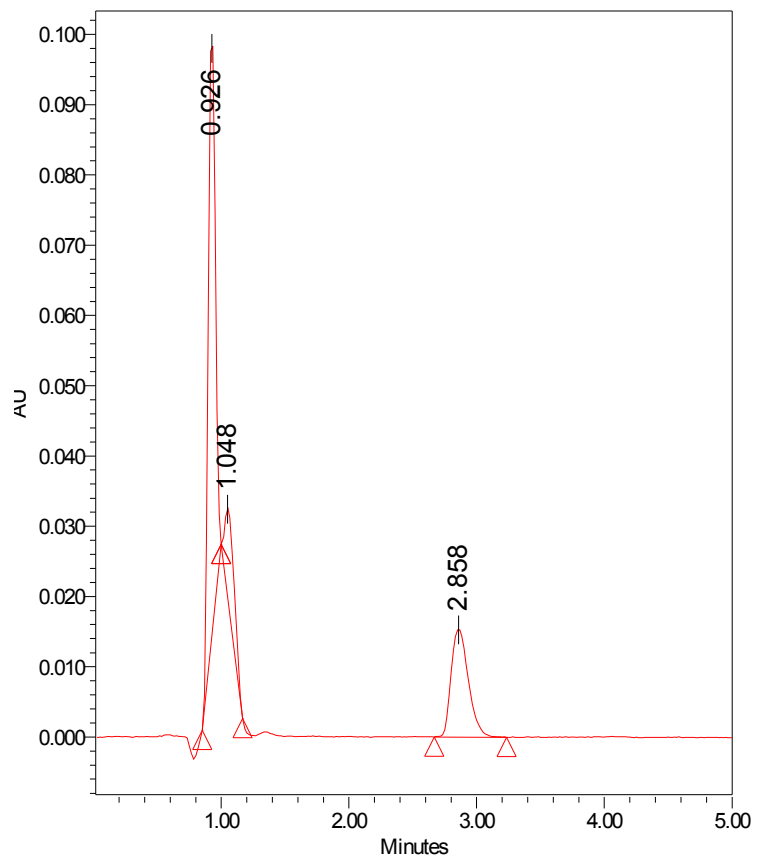
### Auto-Scaled Chromatogram



### Peak Results

	Name	RT	Area	Height	Amount	Units
1	A	0.920	344829	87217		
2	B	1.039	64324	13218		
3	C	2.854	145213	15387		

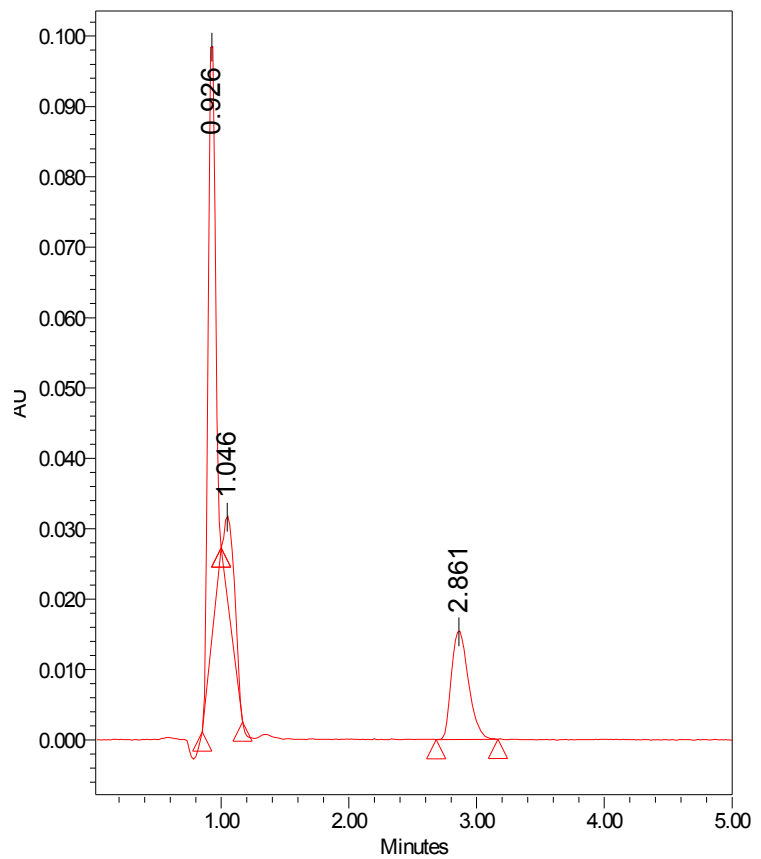
### Auto-Scaled Chromatogram



### Peak Results

	Name	RT	Area	Height	Amount	Units
1		0.926	336768	84602		
2		1.048	68798	12097		
3		2.858	144932	15419		

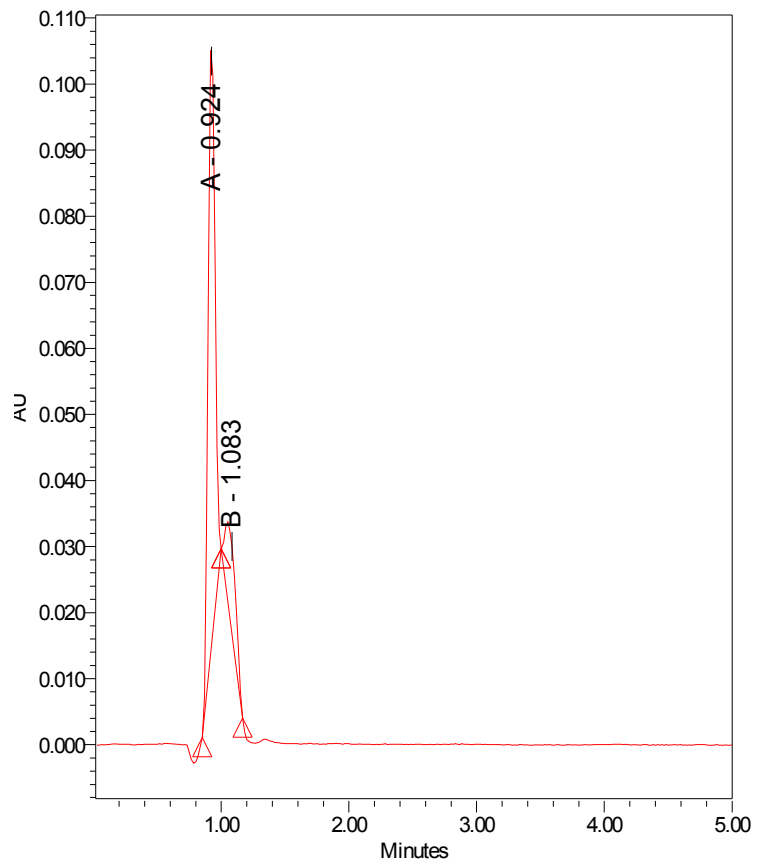
### Auto-Scaled Chromatogram



### Peak Results

	Name	RT	Area	Height	Amount	Units
1		0.926	335950	85100		
2		1.046	71093	11286		
3		2.861	143282	15377		

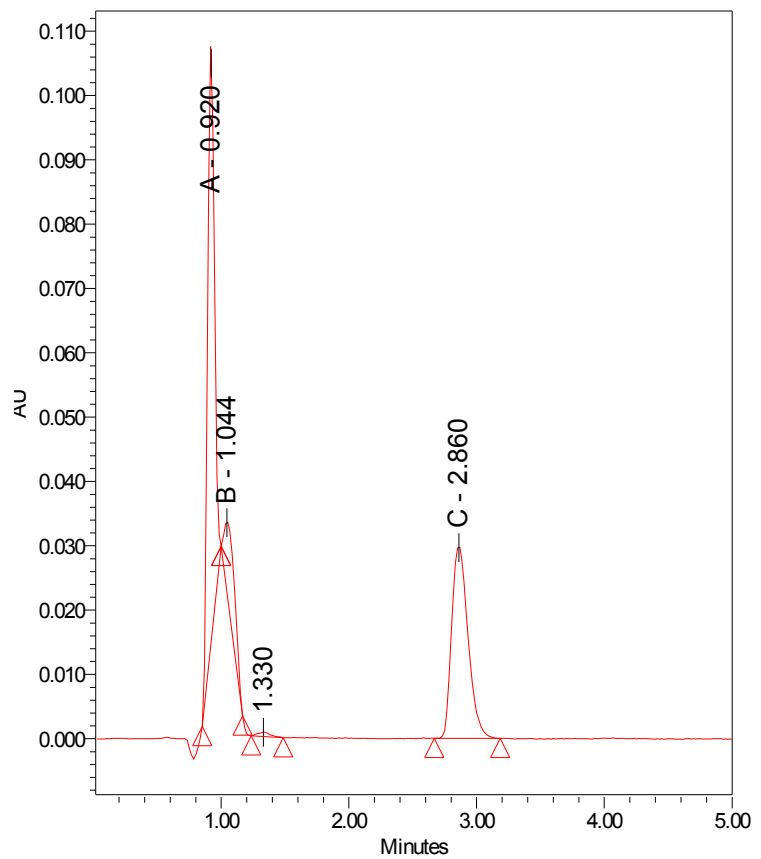
### Auto-Scaled Chromatogram



### Peak Results

	Name	RT	Area	Height	Amount	Units
1	A	0.924	347885	89648		
2	B	1.083	77541	13166		
3	C	2.855				

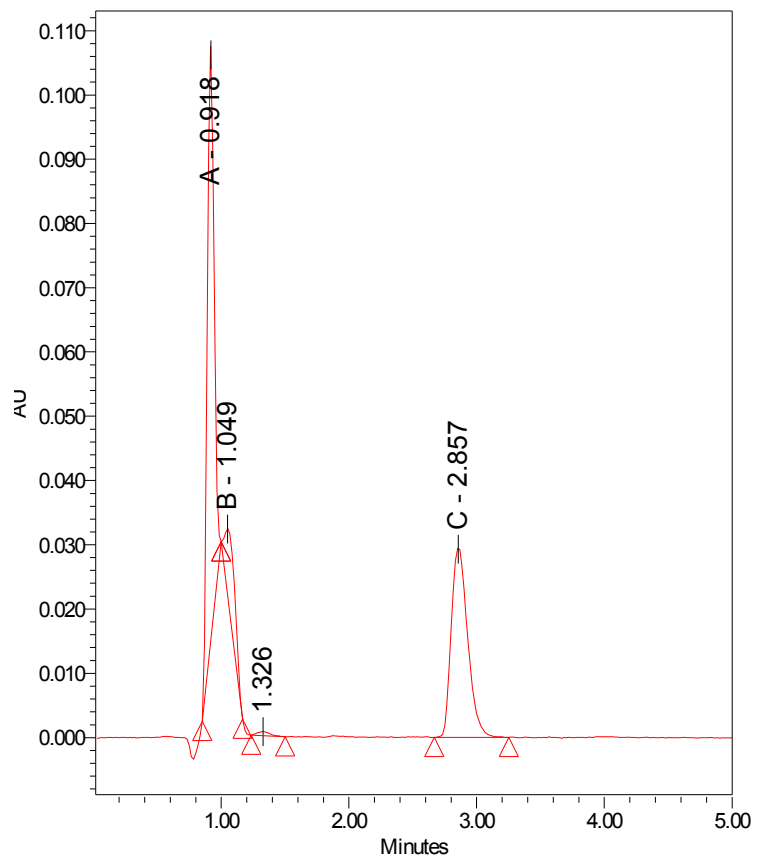
### Auto-Scaled Chromatogram



### Peak Results

	Name	RT	Area	Height	Amount	Units
1	A	0.920	353088	90644		
2	B	1.044	72050	10891		
3		1.330	4831	673		
4	C	2.860	266394	29846		

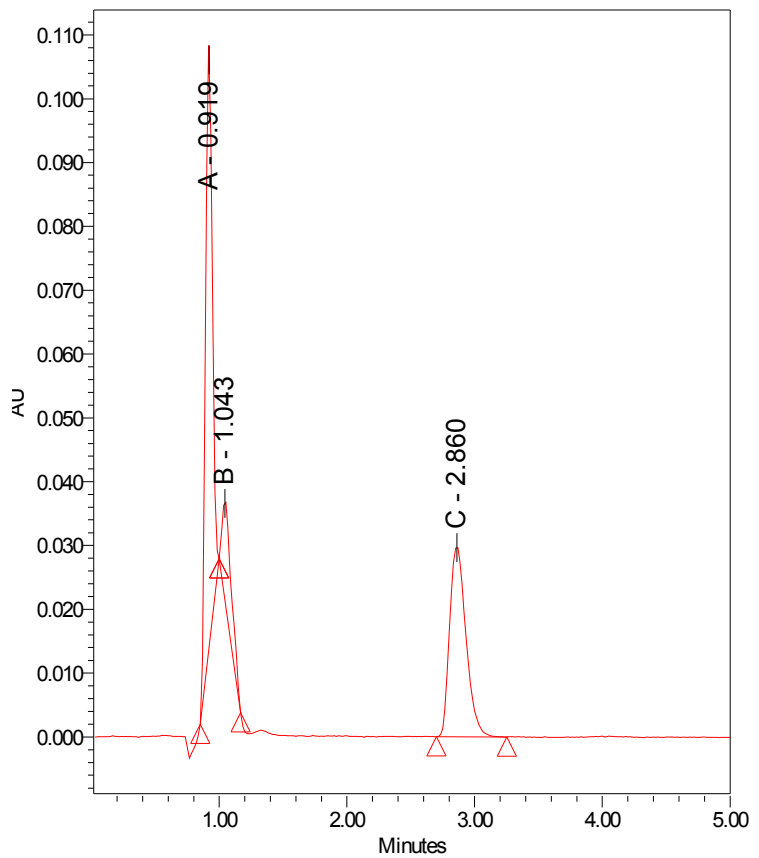
### Auto-Scaled Chromatogram



### Peak Results

	Name	RT	Area	Height	Amount	Units
1	A	0.918	352379	90225		
2	B	1.049	65709	10313		
3		1.326	4474	632		
4	C	2.857	264701	29601		

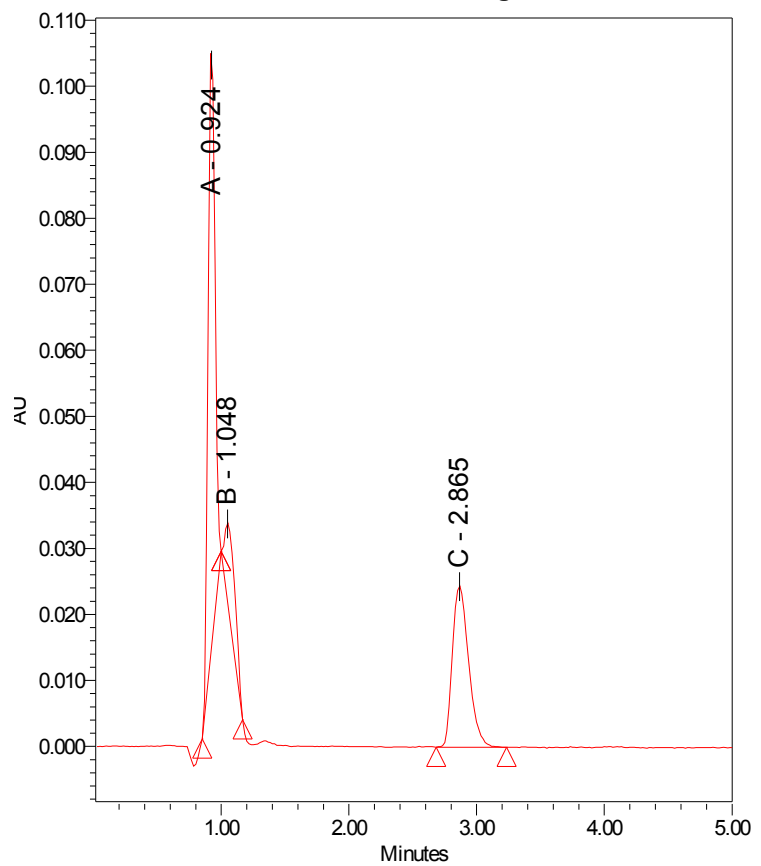
### Auto-Scaled Chromatogram



### Peak Results

	Name	RT	Area	Height	Amount	Units
1	A	0.919	357848	92280		
2	B	1.043	79644	15205		
3	C	2.860	266463	29815		

### Auto-Scaled Chromatogram

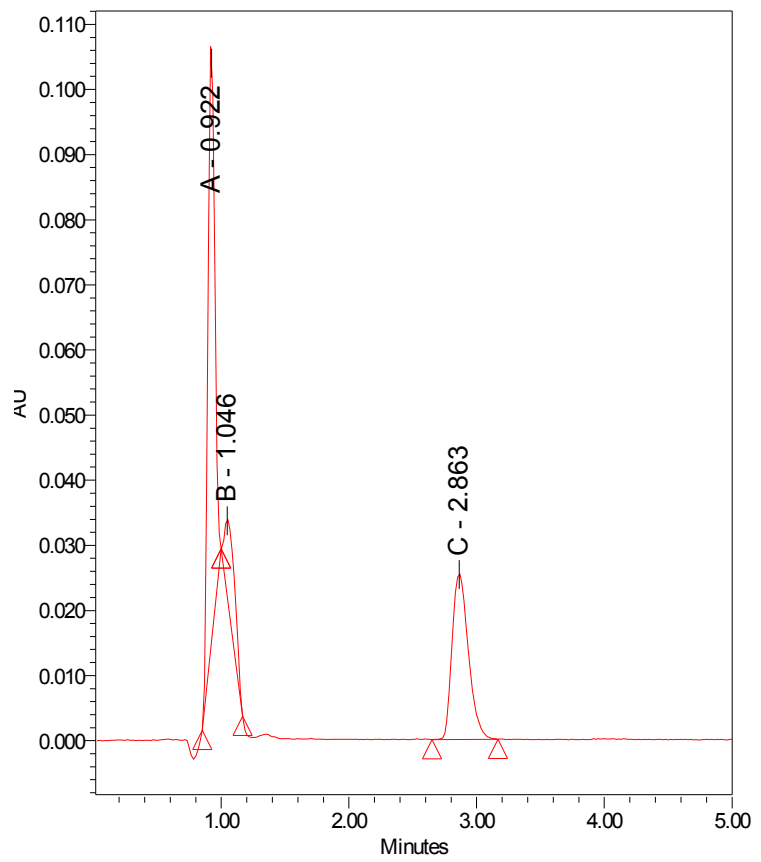


### Peak Results

	Name	RT	Area	Height	Amount	Units
1	A	0.924	346634	89440		
2	B	1.048	75307	11408		
3	C	2.865	217439	24403		



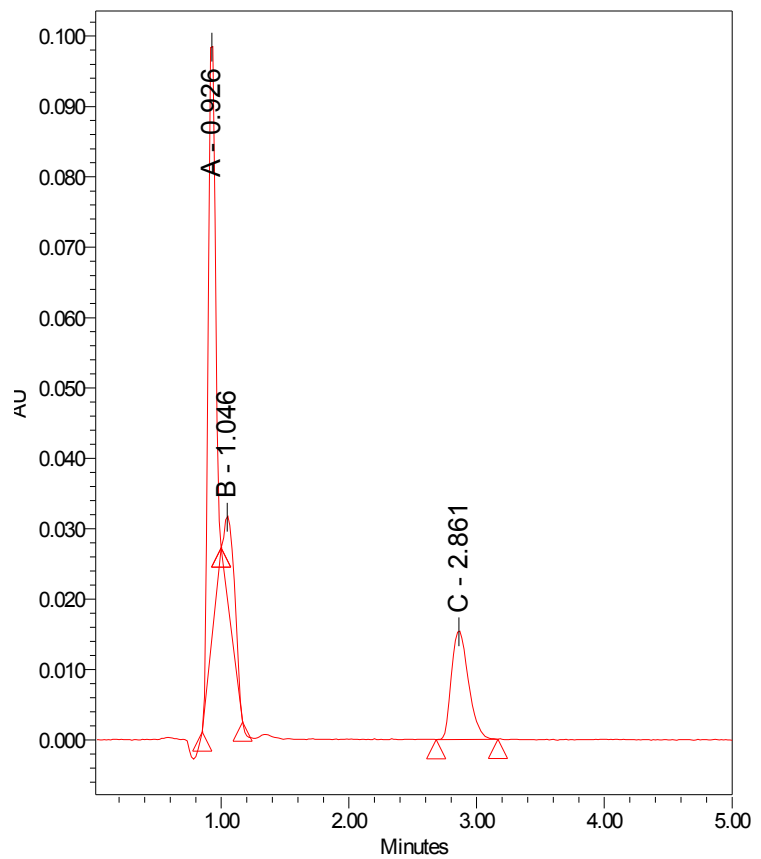
### Auto-Scaled Chromatogram



### Peak Results

	Name	RT	Area	Height	Amount	Units
1	A	0.922	349689	90404		
2	B	1.046	76394	11445		
3	C	2.863	226618	25423		

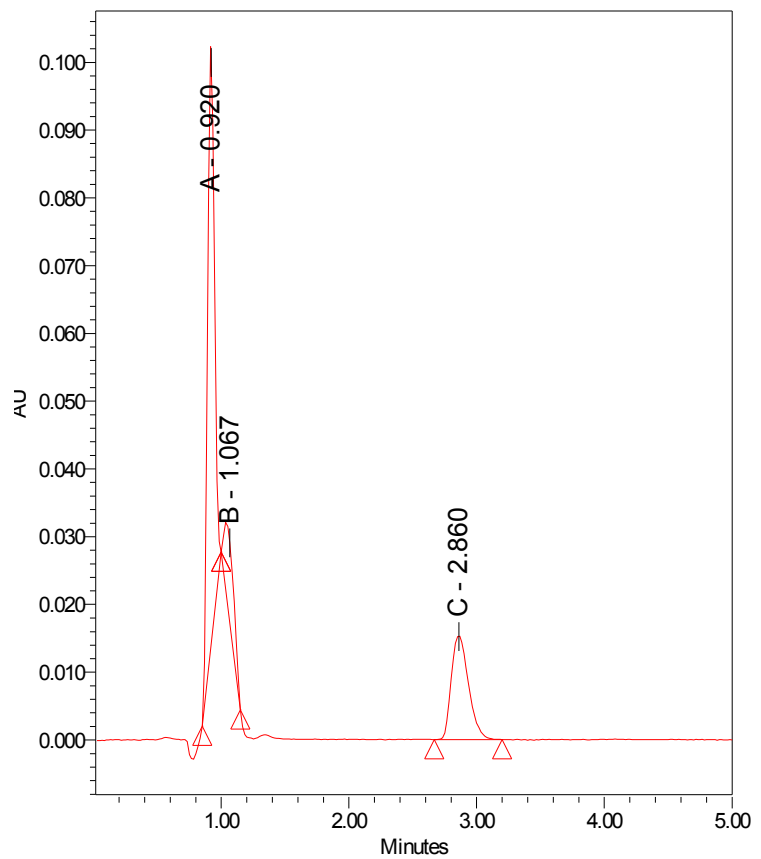
### Auto-Scaled Chromatogram



### Peak Results

	Name	RT	Area	Height	Amount	Units
1	A	0.926	335950	85100		
2	B	1.046	71093	11286		
3	C	2.861	143282	15377		

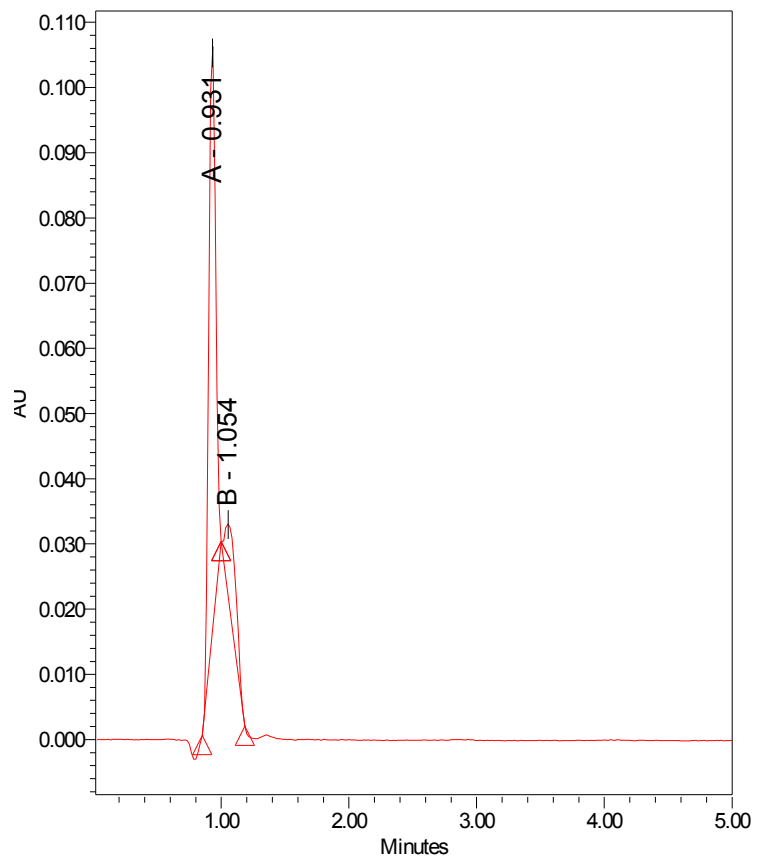
### Auto-Scaled Chromatogram



### Peak Results

	Name	RT	Area	Height	Amount	Units
1	A	0.920	338792	86611		
2	B	1.067	63295	11687		
3	C	2.860	144708	15350		

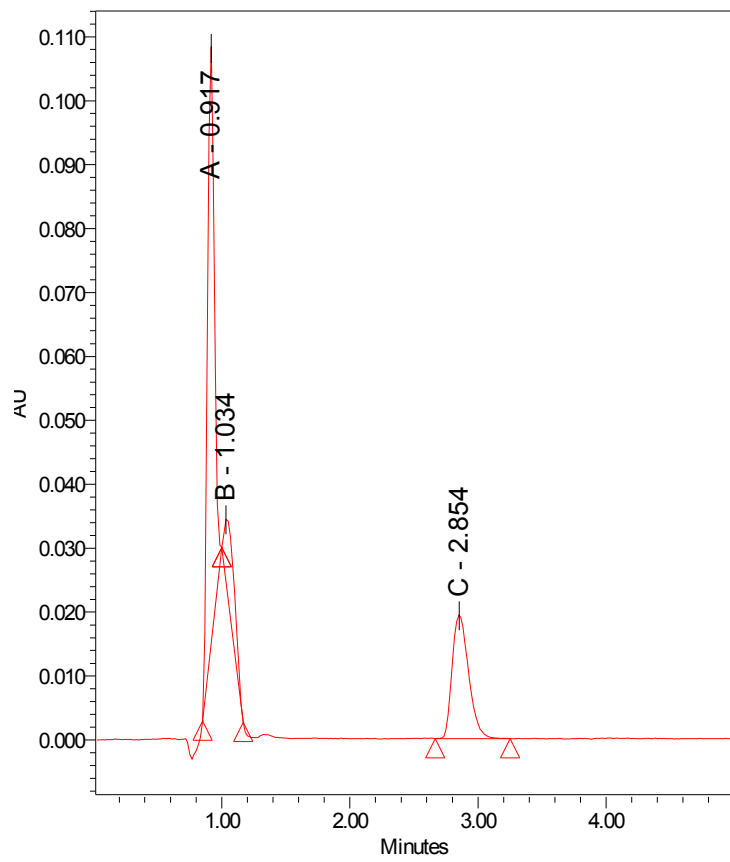
### Auto-Scaled Chromatogram



### Peak Results

	Name	RT	Area	Height	Amount	Units
1	A	0.931	341452	88066		
2	B	1.054	76282	11005		
3	C	2.855				

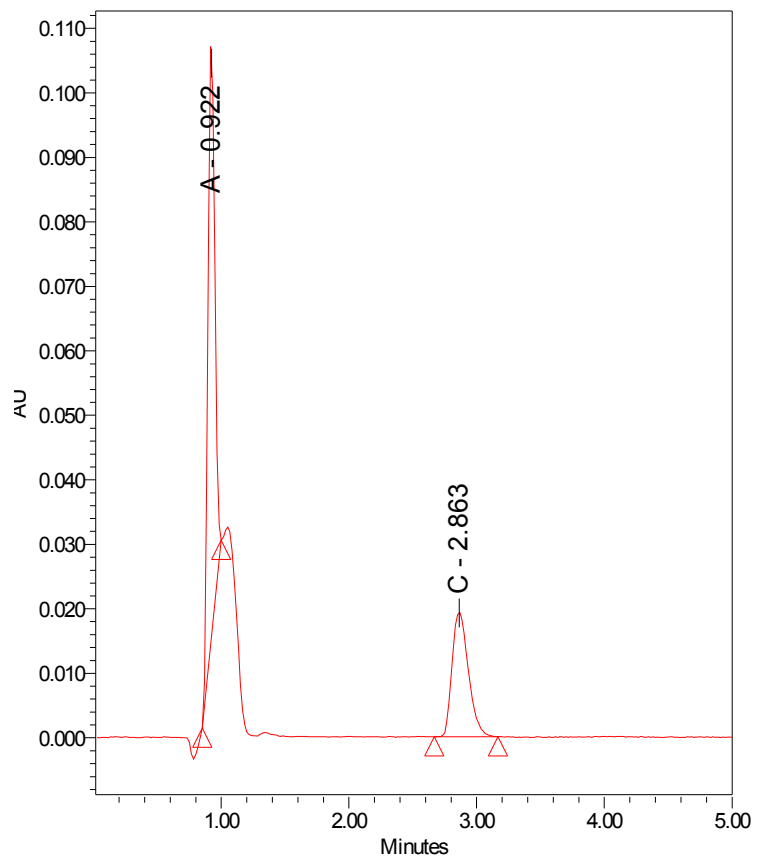
### Auto-Scaled Chromatogram



### Peak Results

	Name	RT	Area	Height	Amount	Units
1	A	0.917	355161	91168		
2	B	1.034	70536	10142		
3	C	2.854	173766	19383		

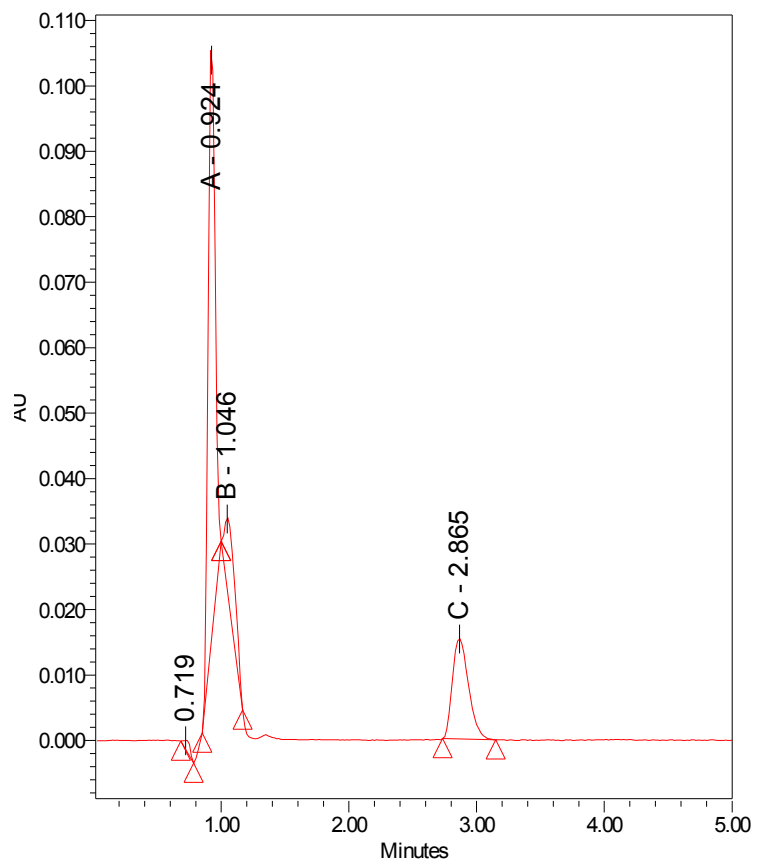
### Auto-Scaled Chromatogram



### Peak Results

	Name	RT	Area	Height	Amount	Units
1	A	0.922	352119	90512		
2	B	1.050				
3	C	2.863	172266	19319		

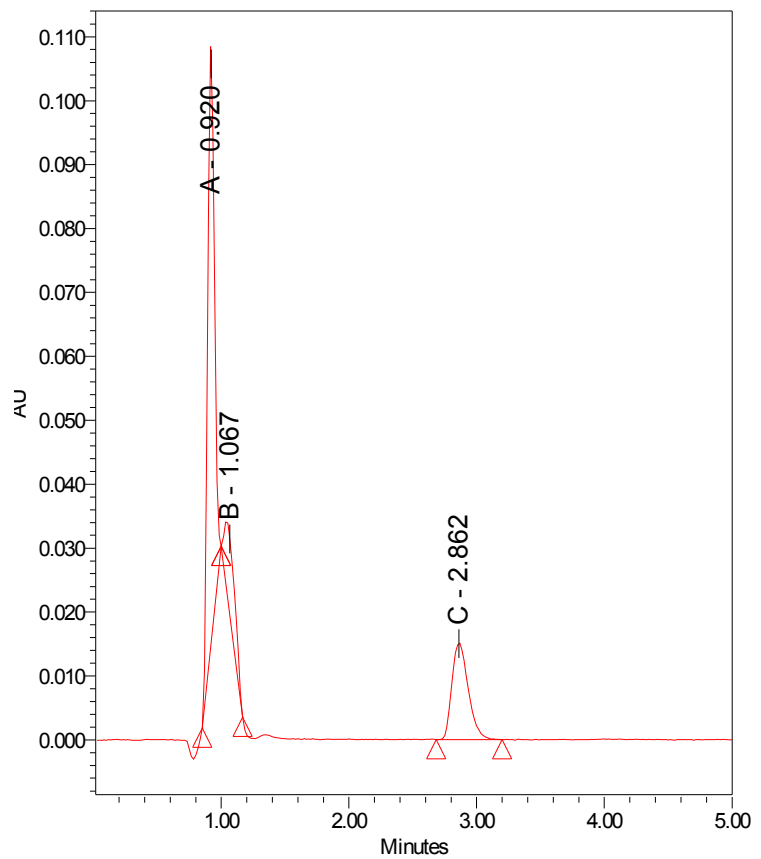
### Auto-Scaled Chromatogram



### Peak Results

	Name	RT	Area	Height	Amount	Units
1		0.719	5892	1535		
2	A	0.924	347820	89624		
3	B	1.046	71871	10626		
4	C	2.865	135106	15331		

### Auto-Scaled Chromatogram

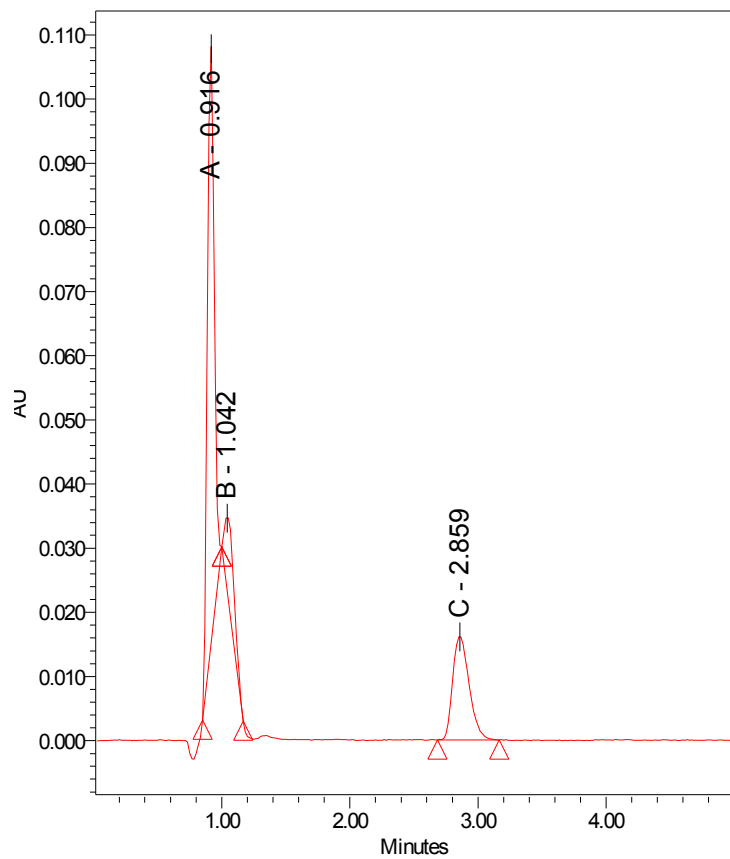


### Peak Results

	Name	RT	Area	Height	Amount	Units
1	A	0.920	352692	91306		
2	B	1.067	70404	11827		
3	C	2.862	134610	15038		



### Auto-Scaled Chromatogram



### Peak Results

	Name	RT	Area	Height	Amount	Units
1	A	0.916	353441	90960		
2	B	1.042	67131	11693		
3	C	2.859	144430	16184		