

AMI UEFI BIOS Flash SOP for Windows

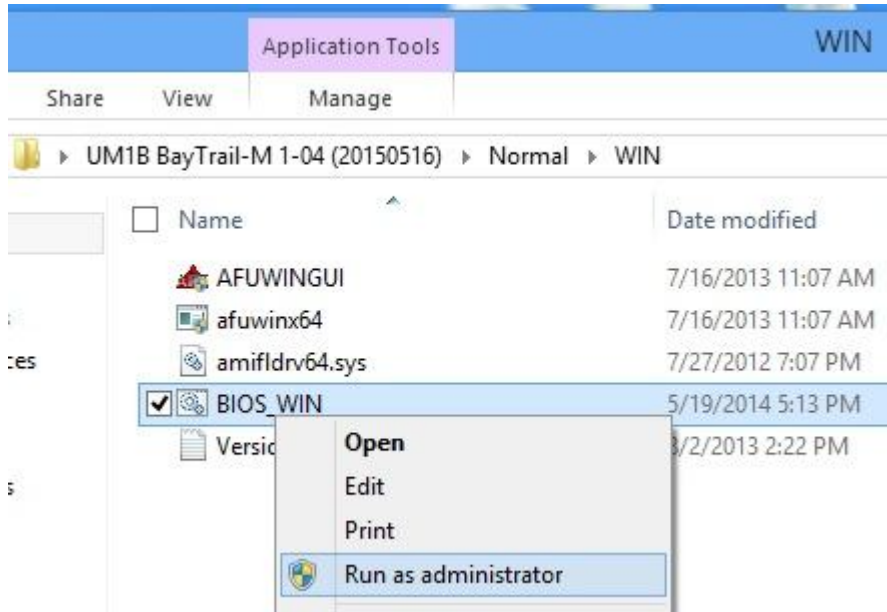
Document Revision: v1.0

Issue Date: 2014/05/19

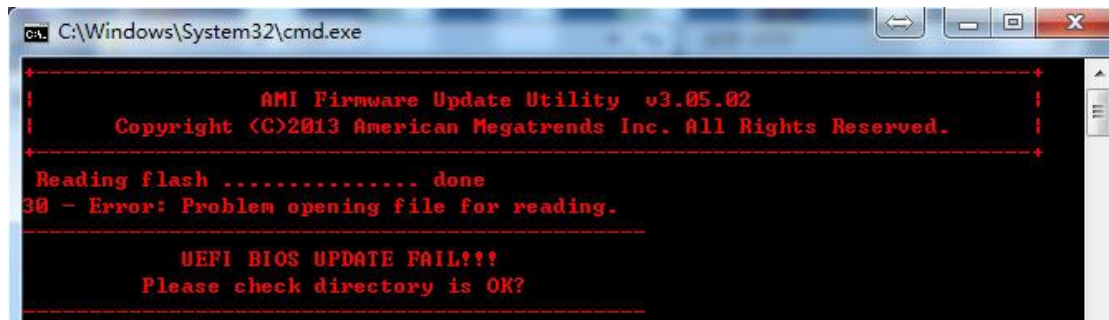
Author: Randy Pan

Flash UEFI BIOS SOP for Windows

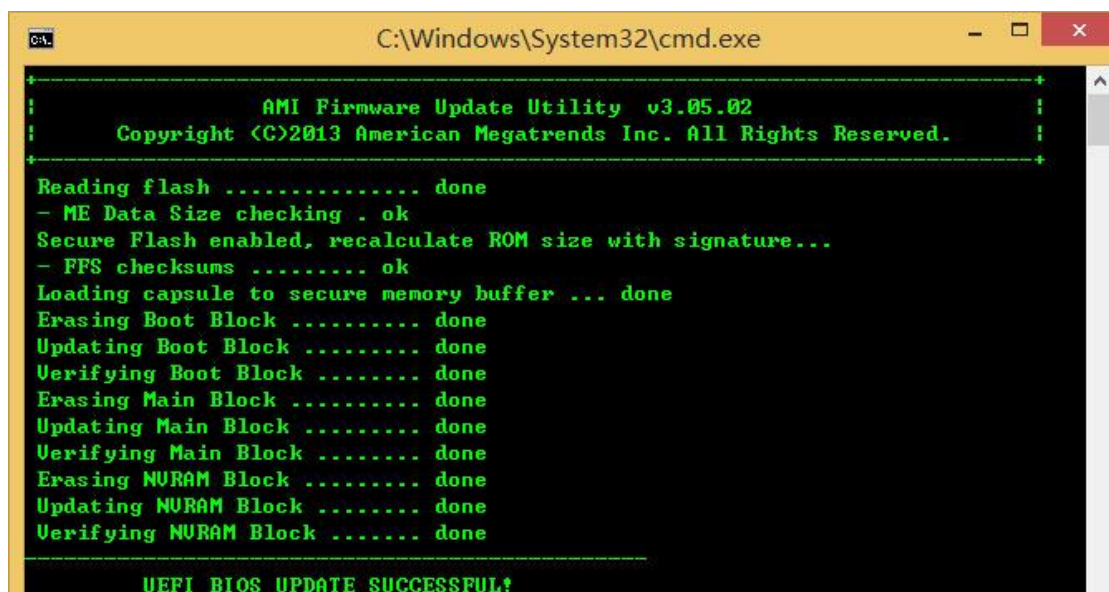
1. Copy BIOS folder to HDD
2. In BIOS folder , select WIN folder and run "BIOS_WIN.bat" as administrator



3. If Bios update fail, will show this error message.



4. After finish flashing BIOS, Press [Enter] to reboot the system within 30 second directly.

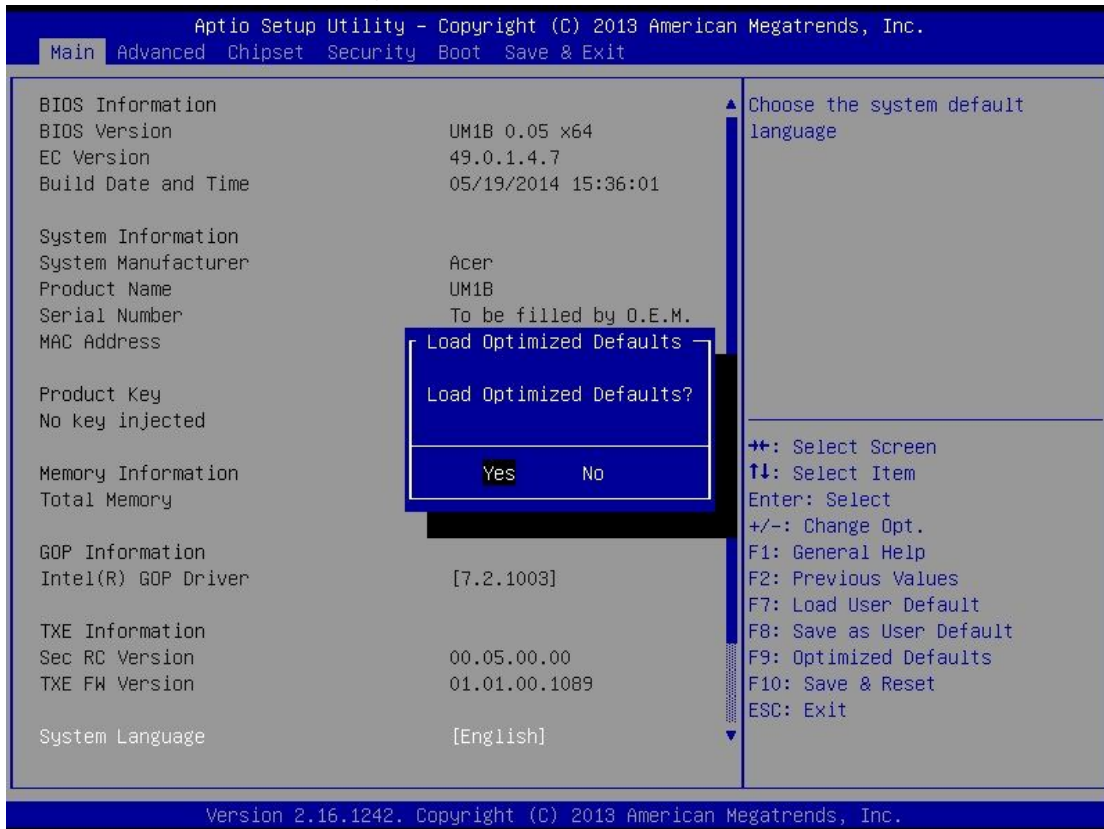


5. When system reboot, please press [Del] key to enter bios Setup.

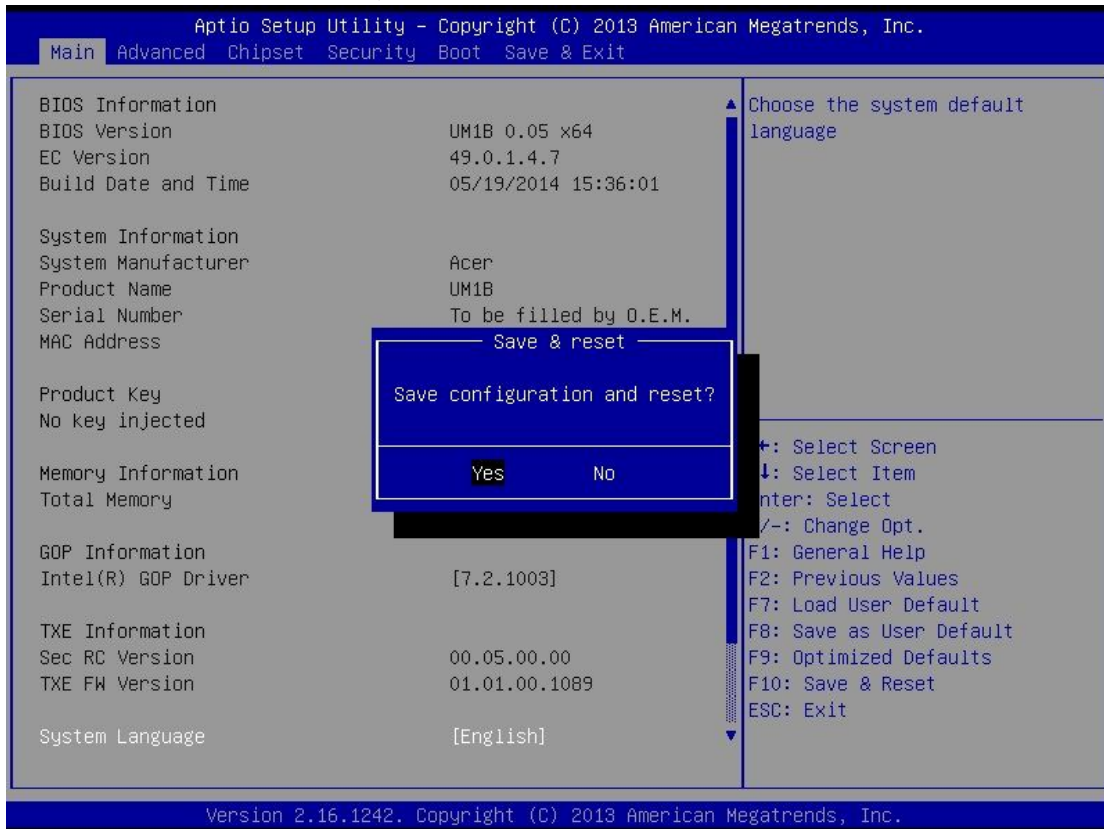


6. Press [F9] key to Load Optimized Default setting.

7. Select "Yes" and press [Enter] key.



8. Press [F10] to save configuration and reset.
9. Select "Yes" and Press [Enter] key.



10. Flash BIOS is finished.