

System Utilities

BIOS Setup Utility

This utility is a hardware configuration program built into a computer's BIOS (Basic Input/Output System).

The utility is pre-configured and optimized so most users do not need to run it. If configuration problems occur, the setup utility may need to be run. Refer to *Chapter 4, Troubleshooting* when a problem arises.

To enter this utility, during POST (power-on self-test) press **F2**.

The default setting of the `F12 Boot Menu` is `Disabled`. To change the boot device without entering the *BIOS Setup Utility*, set the parameter to `Enabled`. During the next POST, press **F12** to enter the `multi-boot` menu.

Navigating the BIOS Utility

The *BIOS Setup Utility* has five menu options, namely:

- Information
- Main
- Security
- Boot
- Exit

Perform the following actions to navigate through the *BIOS Setup Utility*:

- Press `<|>` to select items in the menu bar.
- Press `△▽` to select an item in the menu screen or in an option box.
- Press **F5** or **F6** to change the parameter value.
- Press **Esc** to exit from the *Setup Utility*.
- Press **F9** to load the default settings.
- Press **F10** to save changes and exit from the *Setup Utility*.

⇒ NOTE:

Parameter values enclosed in square brackets [] can be change. Navigation keys appear on the bottom of the screen. Read the item specific help on the right area of the screen before making changes to the parameter values.

⇒ NOTE:

System information can vary depending on the computer model.

BIOS Menus

This section describes the *InsydeH20 BIOS Setup Utility* menu tabs.

⇒ **NOTE:**

The screenshots used in this chapter are for reference only. Actual values can vary depending on the computer model.

Information

This tab shows a summary of the computer's hardware information.

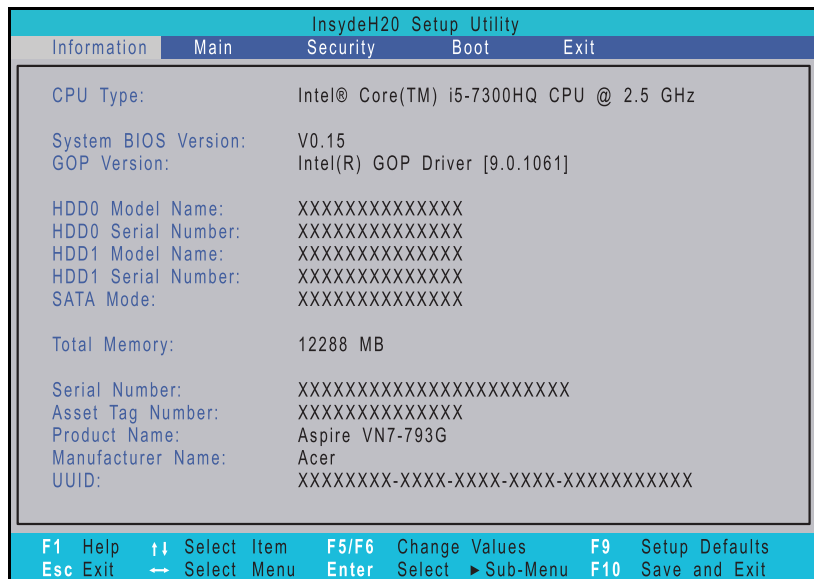


Figure 2-1. Hardware Information

Table 2-1. Hardware Information

Parameter	Description
CPU Type	Model name and core frequency of the installed processor.
CPU Speed	Core frequency of the installed processor.
System BIOS Version	Current system BIOS version.
GOP Version	Current GOP version of the system. Note: This parameter is displayed when Boot Mode is set to UEFI.
HDD0/1 Model Name	Model name of the installed hard drive.
HDD0/1 Serial Number	Serial number of the installed hard drive.
SATA Mode	Current SATA mode used by HDD devices.
Total Memory	Total system memory available.
Serial Number	Serial number of the computer.
Asset Tag Number	Asset tag number of the computer.

Table 2-1. Hardware Information (Continued)

Parameter	Description
Product Name	Model name of the computer.
Manufacturer Name	Computer manufacturer.
UUID	The universally unique identifier tag assigned to the computer.

Main

Use this tab to set the system time and date, enable or disable boot options, and select graphic mode.

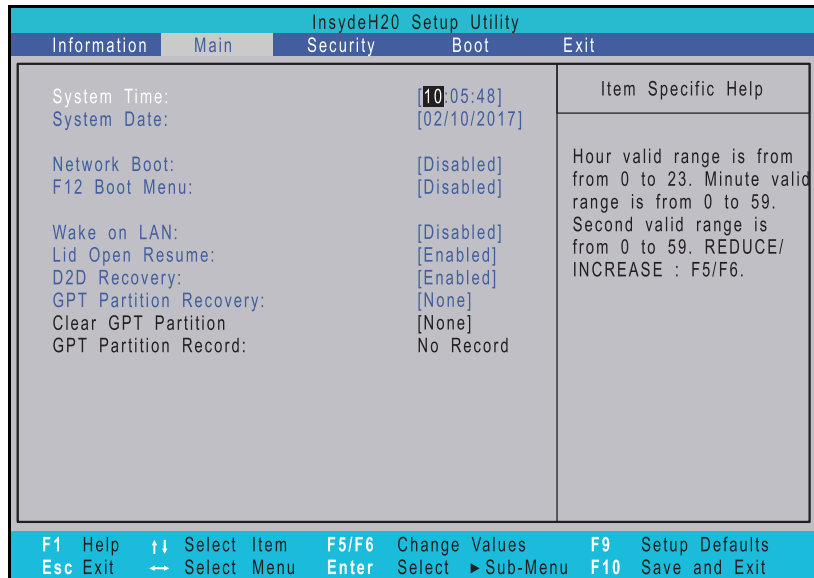


Figure 2-2. BIOS Main

Table 2-2. BIOS Main

Parameter	Description	Format/Option
System Time	System time expressed in 24-hour format.	Format: HH:MM:SS (hour:minute:second)
System Date	System date.	Format: MM/DD/YYYY (month/day/year)
Network Boot	Option to boot system from LAN.	Enabled or Disabled
F12 Boot Menu	Option to enter the <i>Boot</i> menu during POST.	Enabled or Disabled
Wake on LAN	Option to wake up the system from a power saving mode using LAN.	Enabled or Disabled
Lid Open Resume	Option to enable system to automatically resume after opening the display panel.	Enabled or Disabled
D2D Recovery	Option to run Acer D2D recovery via Alt+F10 key during POST.	Enabled or Disabled
GPT Partition Recovery	Option to save or restore data from a GPT disk volume.	None, Save or Restore
Clear GPT Partition	Option to clear data from a GPT disk volume.	None, Clear
GPT Partition Record	Displays a record of the saved GPT partition data and the date and time when data was saved.	No Record, Saved, or Date/Time

Security

Use this tab to safeguard and protect the computer from unauthorized use.

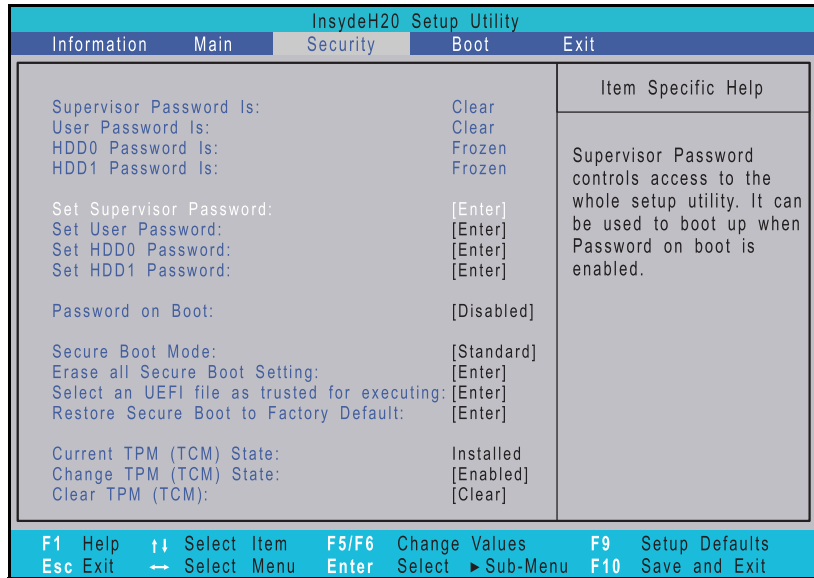


Figure 2-3. BIOS Security

Table 2-3. BIOS Security

Parameter	Description	Option
Supervisor Password Is	Supervisor password setting	Clear or Set
User Password Is	User password setting	Clear or Set
HDD0/1 Password Is	Hard drive password setting	Clear or Set
Set Supervisor Password	Option to set the supervisor password	–
Set User Password	Option to set a user password	–
Set HDD0/1 Password	Option to set the hard drive password	–
Password on Boot	Option to enable password requirement during system boot	Enabled or Disabled
Secure Boot Mode	Option to select between two secure boot modes in firmware setup. Custom mode provides option to modify the contents of the Secure Boot signature databases (PK, KEK, db, dbx). Standard mode restores the firmware settings to its factory defaults. Any customized secure boot variables are also reset to factory defaults.	Standard or Custom

Table 2-3. BIOS Security (Continued)

Parameter	Description	Option
Erase all Secure Boot Setting	Option to clear all Secure Boot signature databases (PK, KEK, db, dbx). Note: An administrator password is required to configure this parameter.	–
Select an UEFI file as trusted for executing	Option to launch an UEFI application from the FAT32 EFI partition on your hard drive or FAT32 formatted USB drive. Note: An administrator password is required to configure this parameter.	–
Restore Secure Boot to Factory Default	Option to set the secure boot mode to standard mode which restores the factory defaults. Note: An administrator password is required to configure this parameter.	–
Current TPM (TCM) Version	Current TPM (TCM) version. Information only.	–
Current TPM (TCM) State	Current TPM (TCM) state. Information only.	–
Change TPM (TCM) State	Option to set the TPM (TCM) state.	No Change / Enable & Active / Deactive & Disable / Clear
Clear TPM (TCM)	Option to clear TPM or TCM Note: This parameter is grayed out if the Supervisor Password is not set.	No Change

⇒ NOTE:

When prompted to enter the password, three attempts are allowed before system halts. Resetting the BIOS password may require the user to return the computer to its dealer.

Setting a Password

Follow the succeeding instructions to set the user or supervisor passwords.

1. Press $\Delta\nabla$ to highlight a Set _____ Password parameter and press **Enter**. The Set _____ Password dialog box appears.

Set Supervisor Password	
Enter New Password	[]
Confirm New Password	[]

Figure 2-4. Set Supervisor Password

2. Type a new password in the Enter New Password field and press **Enter**. Passwords are not case sensitive and the length must not exceed eight alphanumeric characters (A-Z, a-z, 0-9).
3. Retype the password in the Confirm New Password field and press **Enter**.

+ IMPORTANT:

Use care when typing a password. Characters do not appear on the screen.

4. Press **Enter**.

⇒ NOTE:

Users can choose to enable the Password on Boot parameter.

5. Press **F10** to save changes and exit from the *BIOS Setup Utility*.

Removing a Password

Perform the following:

1. Press $\Delta\nabla$ to highlight a Set _____ Password parameter and press **Enter**. The Set _____ Password dialog box appears.

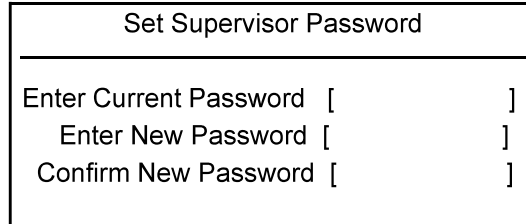
Set Supervisor Password	
Enter Current Password	[]
Enter New Password	[]
Confirm New Password	[]

Figure 2-5. Set Supervisor Password

2. Type the current password in the Enter Current Password field and press **Enter**.
3. Press **Enter** twice without typing anything in the Enter New Password and Confirm New Password fields.
4. Press **F10** to save changes and exit from the *BIOS Setup Utility*.

Changing a Password

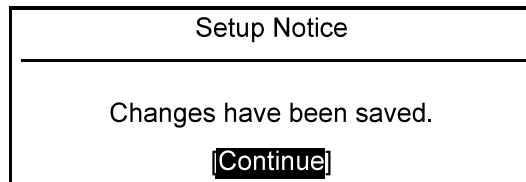
1. Press $\Delta \nabla$ to highlight a Set _____ Password parameter and press **Enter**. The Set _____ Password dialog box appears.



A rectangular dialog box with a title bar that reads "Set Supervisor Password". Below the title bar, there are three input fields, each followed by a closing square bracket: "Enter Current Password []", "Enter New Password []", and "Confirm New Password []".

Figure 2-6. Set Supervisor Password

2. Type the current password in the Enter Current Password field and press **Enter**.
3. Type the new password in the Enter New Password field.
4. Retype the password in the Confirm New Password field.



A rectangular dialog box with a title bar that reads "Setup Notice". Below the title bar, the text "Changes have been saved." is centered. At the bottom center, there is a button labeled "[Continue]".

Figure 2-7. Setup Notice

5. Press **Enter**. Computer sets Supervisor Password parameter to Set.

⇒ NOTE:

Users can choose to enable the Password on Boot parameter.

6. Press **F10** to save changes and exit from the *BIOS Setup Utility*.

Boot

Use this tab to set the preferred drive sequence in which the *Setup Utility* attempts to boot the operating system. By default, the computer searches for boot devices in the following order:

1. Windows Boot Manager
2. Primary Hard Disk Drive
3. Secondary Hard Disk Drive
4. External USB bootable device
5. Network boot - IPV4
6. External USB hard drive
7. External USB optical drive
8. Network boot - IPV6

Press Δ / ∇ to select a device and press **F5** or **F6** to move it up or down the list.

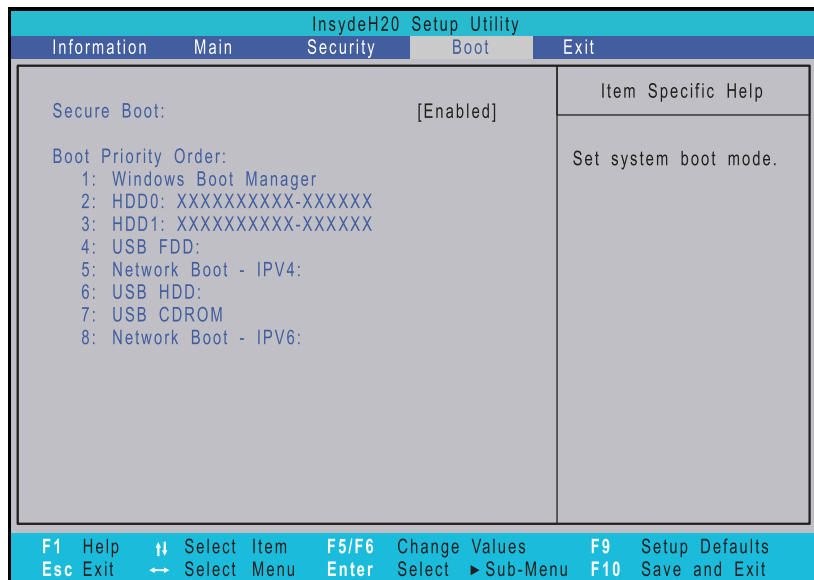


Figure 2-8. BIOS Boot

Table 2-8. BIOS Boot

Parameter	Description	Option
Secure Boot	Option to enable or disable secure boot check.	Enabled or Disabled

Exit

Use the Exit tab to save or discard changes and close the *BIOS Setup Utility*.

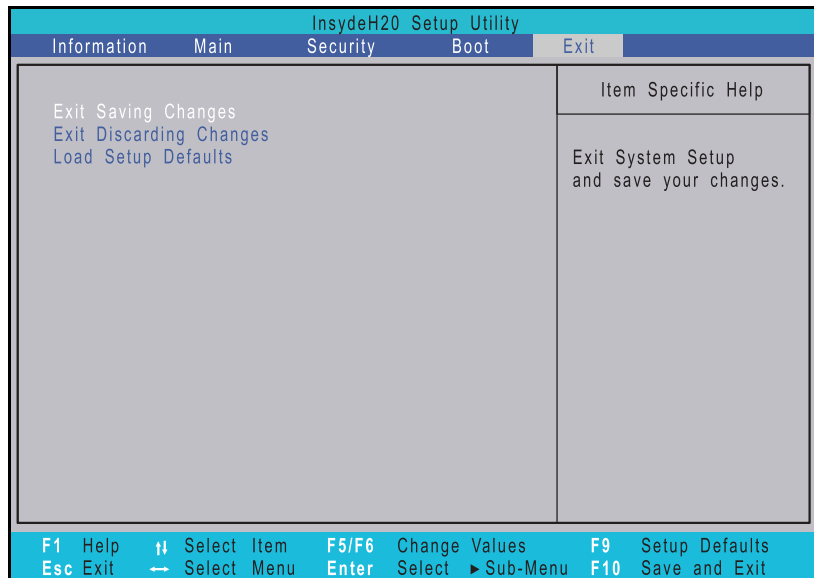


Figure 2-9. BIOS Exit

Table 2-9. Exit Parameters

Parameter	Description
Exit Saving Changes	Close the <i>BIOS Setup Utility</i> and save the setup changes.
Exit Discarding Changes	Close the <i>BIOS Setup Utility</i> without saving the setup changes.
Load Setup Default	Load the default values for all setup items.