

# HDD Module Removal

## Prerequisite:

✱ **Lower Case Removal** on page 5-12

1. Release the latch and disconnect the HDD FFC from the mainboard connector.



Figure 5-64. Disconnecting the Cable

2. Remove the four (4) screws securing the HDD module to the upper case.



Figure 5-65. Removing the Screws

3. Lift to remove the HDD module out from the slot.

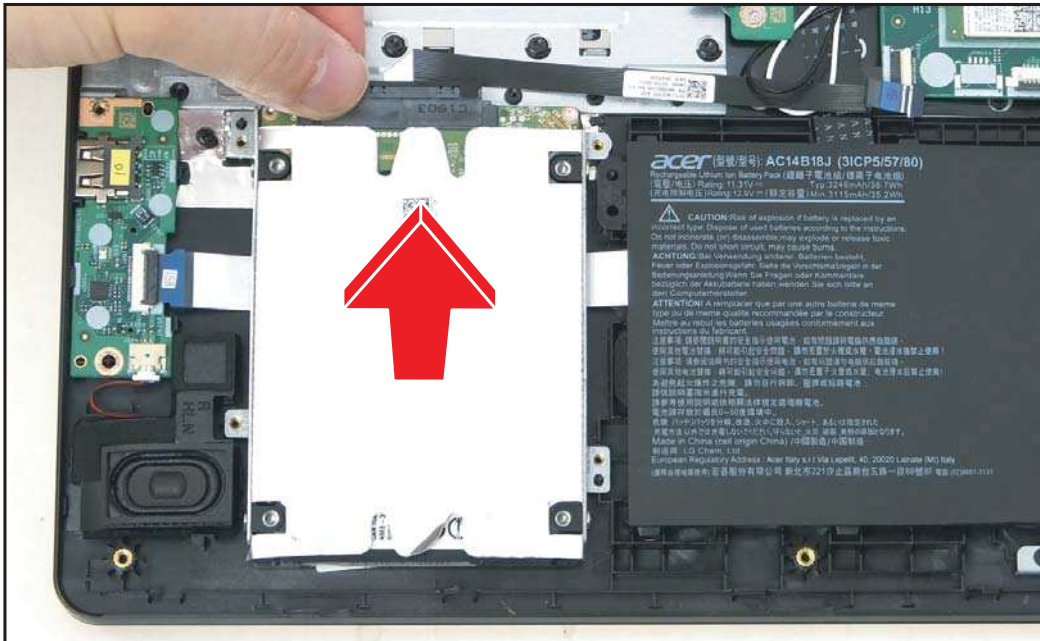


Figure 5-66. Removing the HDD Module

4. Disconnect the HDD FFC from the HDD module connector.

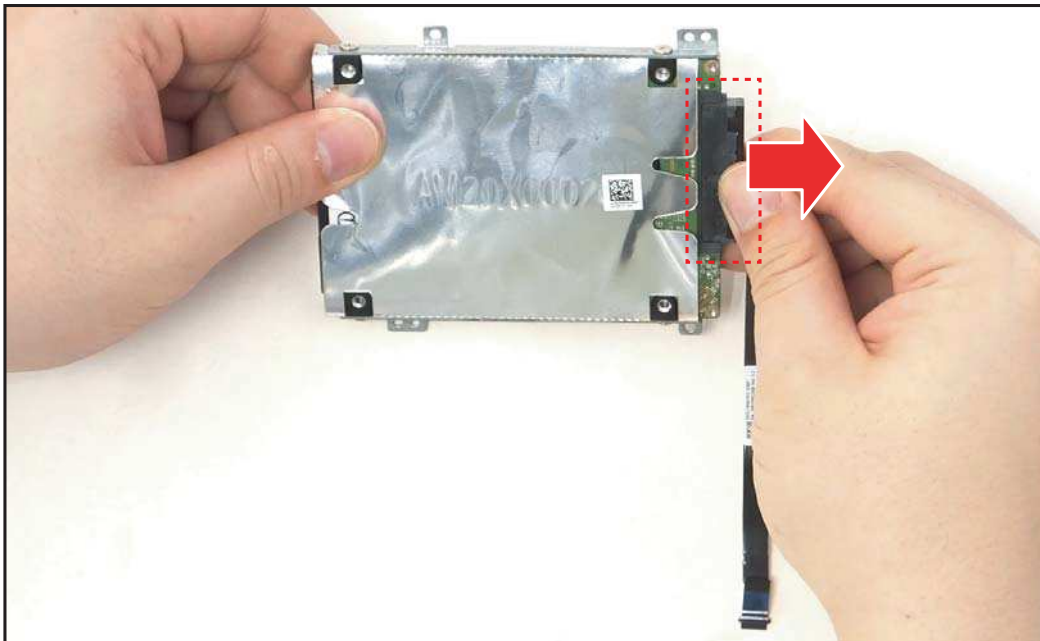


Figure 5-67. Disconnecting the HDD FFC

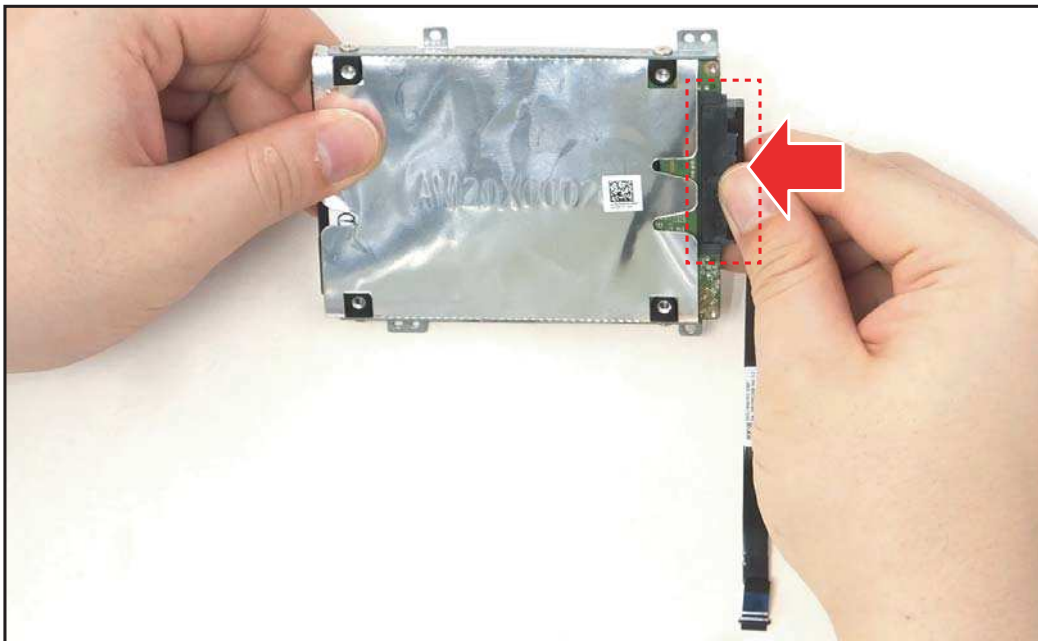
## HDD Module Installation

⇒ **NOTE:** For non-HDD SKU, make sure to use the four screws (included in the package) to secure the HDD carrier to the HDD.



**Figure 5-68. Screws for non-HDD SKU**

1. Connect the HDD FFC to the HDD module connector.



**Figure 5-69. Connecting the HDD FFC**



- Align and install the HDD module into its slot on the upper case.

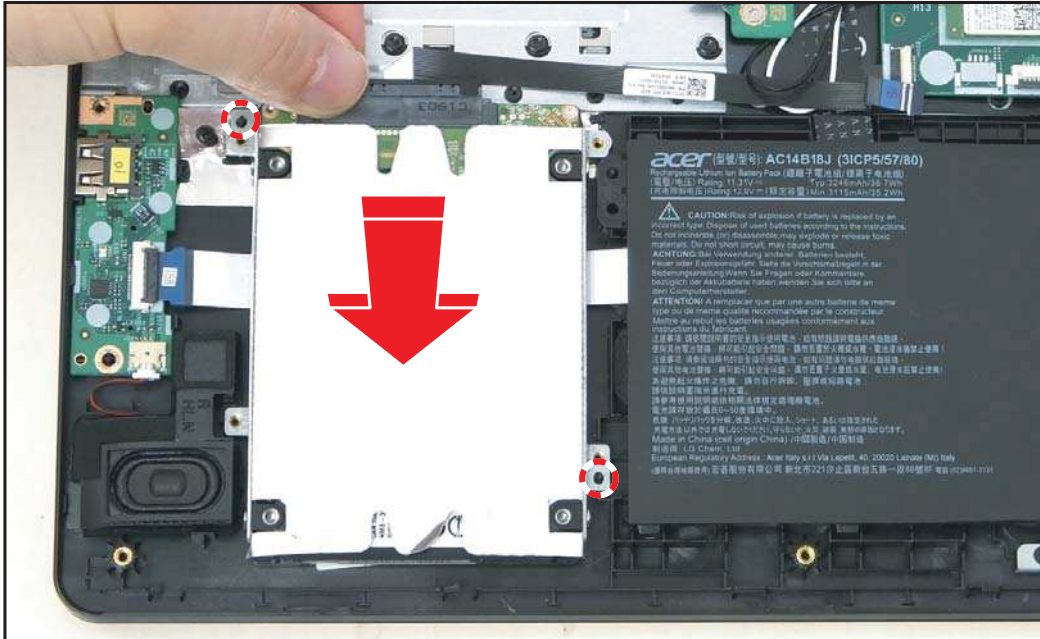


Figure 5-70. Installing the HDD Module

- Attach the four (4) screws to secure the HDD module to the upper case.

⇒ **NOTE:** Screw torque force = 1.8~2.2kgf.cm



Figure 5-71. Securing the Screws

4. Connect the HDD FFC to the mainboard connector and secure the latch.

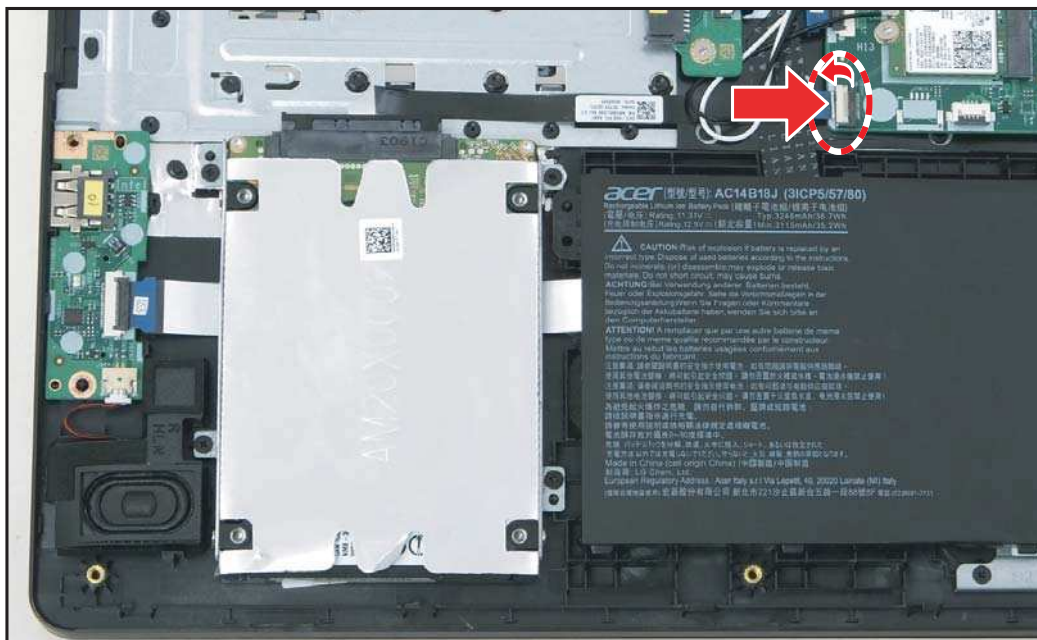



Figure 5-72. Connecting the Cable

5. Install the lower case (see [Lower Case Installation](#) on page 5-14).

Table 5-13. HDD Module Screws

Screw Name	Screw Type	Torque	Quantity
M 2.0 x 3.0		1.8~2.2kgf.cm	4