

# Removing the Lower Case

- 1. Turn the computer over so that the base is facing up.
- 2. Remove the nine screws securing the lower case to the palm rest module/upper case.

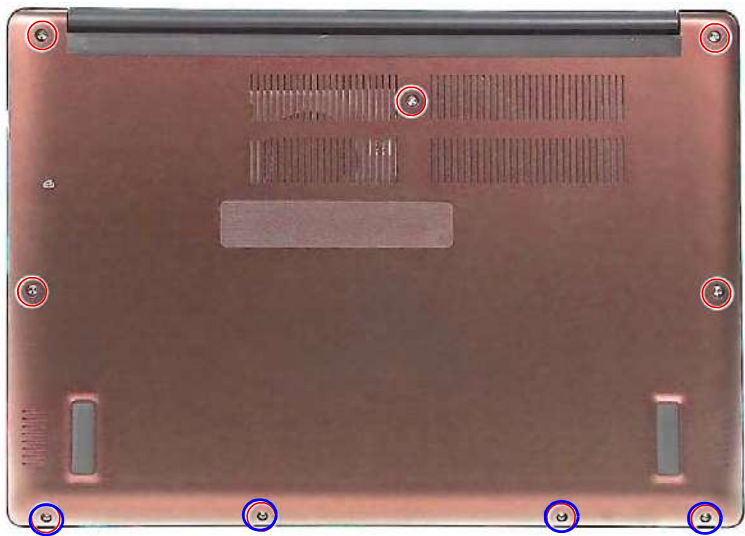




Figure 3-3. Lower Case Screws

Table 3-10. Screws

Step	Screw	Quantity	Torque	Screw Type
Lower Case Disassembly	M2.5 x L6	5	3.0 ± 0.45 kgf cm	
	M2 x L4	4	3.0 ± 0.45 kgf cm	

- 3. Pry the sides of the lower case from the upper case to disengage the latches.



Figure 3-4. Lower and Upper Case Latches

4. Once the lower case is separated, lift it off the system.



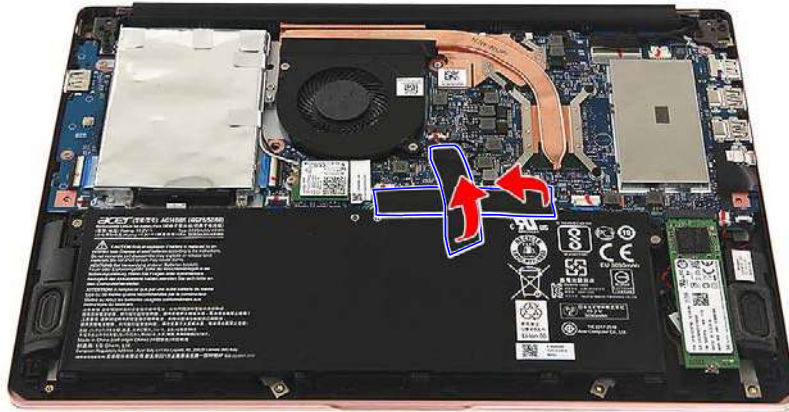
---

**Figure 3-5. Lower Case**

## Removing the Battery Pack

---

1. Perform the [Removing the Lower Case](#) procedure described on page 3-10.
2. Detach the two adhesive tapes from the battery pack.



---

**Figure 3-6. Battery Pack Adhesive Tapes**

3. Disconnect the battery cable from the mainboard.



---


**Figure 3-7. Mainboard Connector — Battery Cable**

4. Remove the two screws securing the battery to the upper case.



Figure 3-8. Battery Screws

Table 3-11. Screws

Step	Screw	Quantity	Torque	Screw Type
Battery Pack Disassembly	M2 x L3.5	2	1.6 ± 0.2 kgf cm	

5. Lift the battery pack from its bay.



Figure 3-9. Battery Pack

⇒ **NOTE:**  
WEEE Annex VII part. The battery has been highlighted with the yellow rectangle in [Figure 3-9](#). Remove the battery and follow local regulations for disposal.