
Standard Disassembly Process

1. Open the computer

- 1.1 Remove two screws fastened on the side-cover

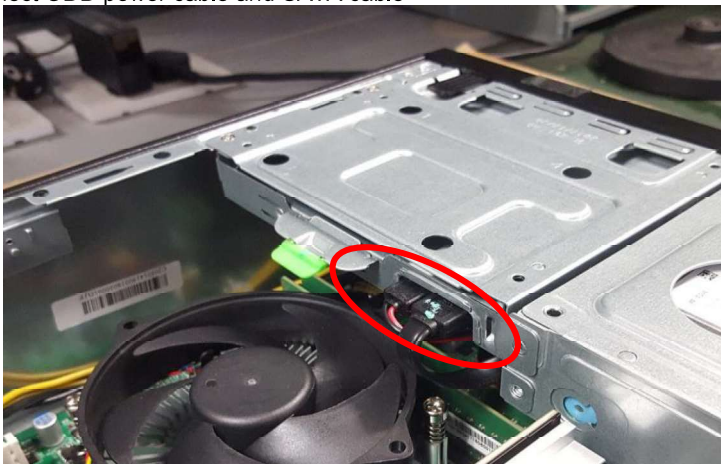


- 1.2 Remove the side-cover from chassis



2. Disassemble Slim ODD

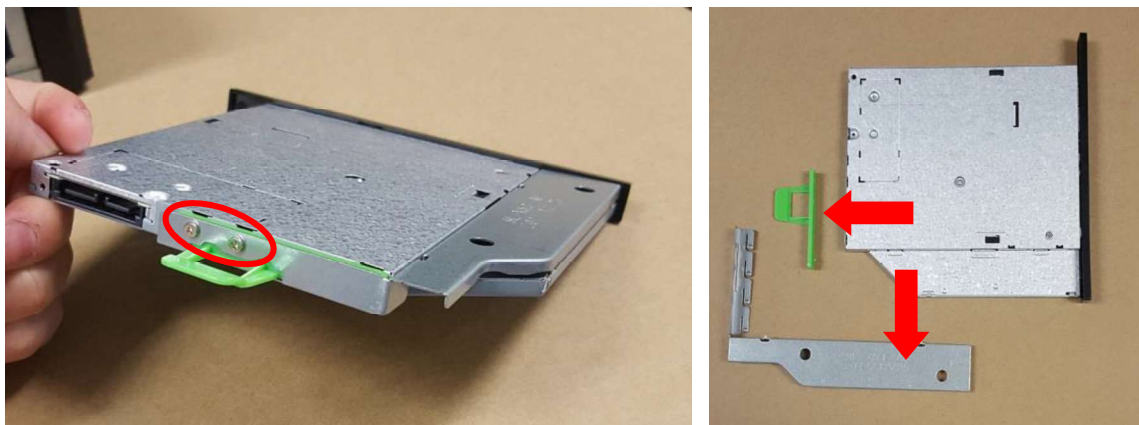
- 2.1 Disconnect ODD power cable and SATA cable



2.2 Press the tail of ODD to pushing it out of chassis

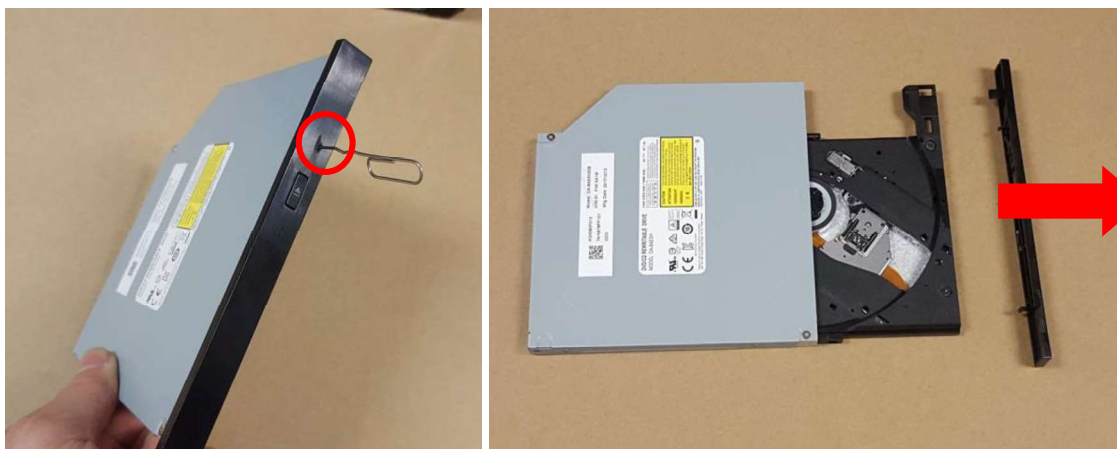


2.3 Remove two screws at the back of ODD to disassemble the ODD brackets



2.4 Stabbing into a small hole on the ODD bezel with a pin to ejecting the ODD tray then pull the ODD bezel to separate it from the tray.

NOTE: There's 4 hooks on ODD bezel be caution while this operation



3. Disassemble front bezel

3.1 Unlock the hooks of front bezel then remove front bezel



4. Disassemble 3.5" HDD

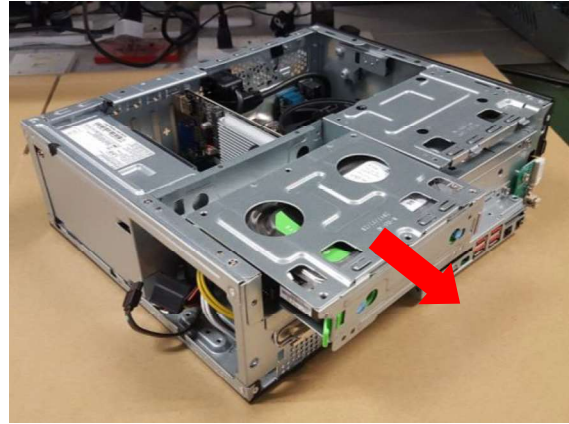
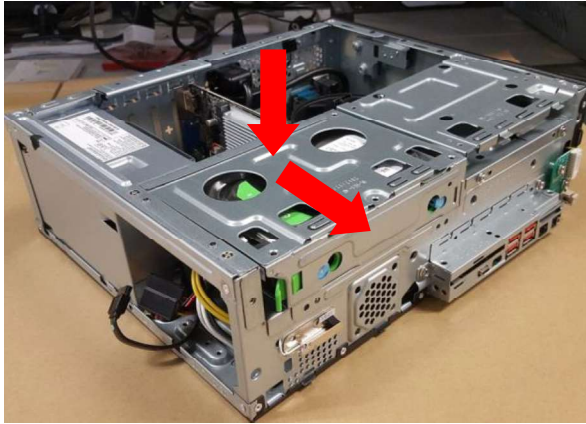
4.1 Disconnect SATA cable and power cable from HDD



4.2 Remove two screws fastening HDD cage



4.3 Press the ODD cage down and pull it out



4.4 Pull green rack out from HDD cage



4.5 Remove HDD from green rack

