

System Utilities

BIOS Setup Utility

This utility is a hardware configuration program built into a computer's BIOS (Basic Input/Output System).

The utility is pre-configured and optimized so most users do not need to run it. If configuration problems occur, the setup utility may need to be run. Refer to [Chapter 4, Troubleshooting](#) when a problem arises.

To activate the utility, press **F2** during POST (power-on self-test) when prompted at the bottom of screen.

The default parameter of `F12 Boot Menu` is set to `Disabled`. To change the boot device without entering *BIOS Setup Utility*, set the parameter to `Enabled`.

To change the boot device without entering the BIOS SETUP, press **F12** during POST to enter the multi-boot menu.

Navigating the BIOS Utility

Six menu options are:

- Information
- Main
- Advanced
- Security
- Boot
- Exit

To navigate through the following:

- Menu - use the left and right arrow keys
- Item - use the up and down arrow keys
- Change parameter value - press **F5** or **F6**.
- Exit - Press **Esc**
- Load default settings - press **F9**.
- Save changes and exit BIOS Setup Utility - Press **F10**.

⇒ NOTE:

Parameter values can be changed if enclosed in square brackets []. Navigation keys appear at the bottom of the screen. Read parameter help carefully when making changes to parameter values. Parameter help is found in the Item Specific Help area of the screen.

+ IMPORTANT:

Be careful when changing any settings in the BIOS. Incorrect settings can cause your PC to malfunction or crash. Please make sure all important data is backed up before changing anything in the BIOS.

⇒ NOTE:

System information is subject to specific models.

BIOS

The following is a description of the tabs found on the InsydeH20 *BIOS Setup Utility* screen:

⇒ **NOTE:**

The screens provided are for reference only. Actual values may differ by model.

Information

The Information tab shows a summary of computer hardware information.

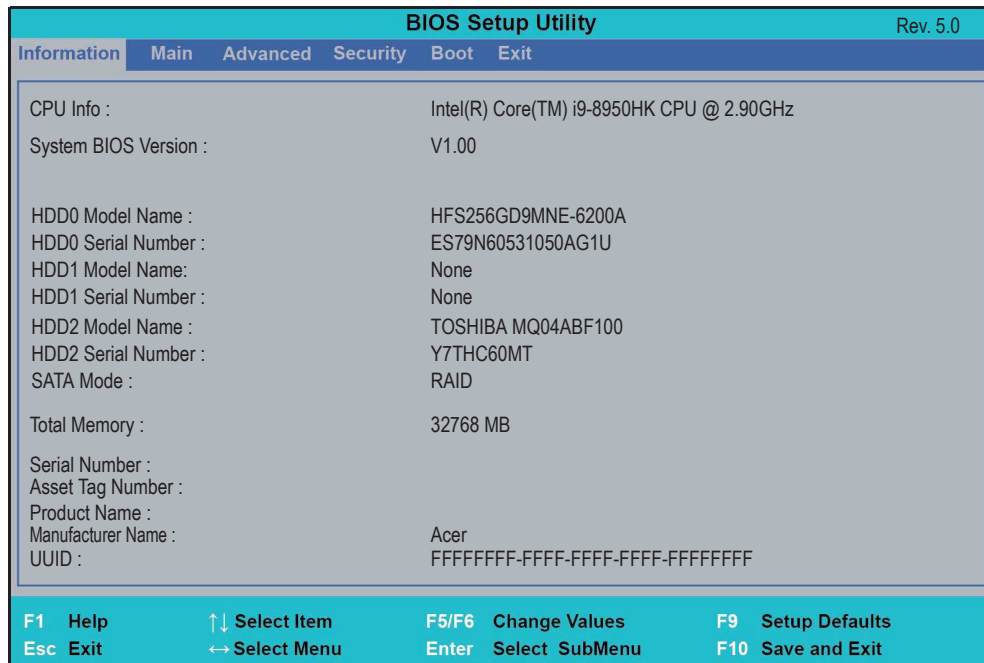


Figure 2-1. BIOS Information

Table 2-1 describes the parameters shown in [Figure 2-1](#).

Table 2-1. BIOS Information

Parameter	Description
CPU Info	CPU (central processing unit) type and speed of system
System BIOS Version	System BIOS version
HDD0 Model Name	Model name of HDD 0 installed on primary IDE master
HDD0 Serial Number	Serial number of HDD 0 installed on primary IDE master
HDD1 Model Name	Model name of HDD 1 installed on secondary IDE master
HDD1 Serial Number	Serial number of HDD 1 installed on secondary IDE master
HDD2 Model Name	Model name of HDD 2 installed on the third IDE master

Table 2-1. BIOS Information (Continued)

Parameter	Description
HDD2 Serial Number	Serial number of HDD 2 installed on the third IDE master
SATA Mode	Sets the communication method of the SATA drive with the computer
Total Memory	Total memory available
Serial Number	Serial number of unit
Asset Tag Number	Asset tag number of system
Product Name	Product name of the system
Manufacturer Name	Manufacturer of system
UUID	Universally Unique Identifier

Main

The Main tab allows the user to set system time and date, enable or disable boot option and enable or disable recovery.

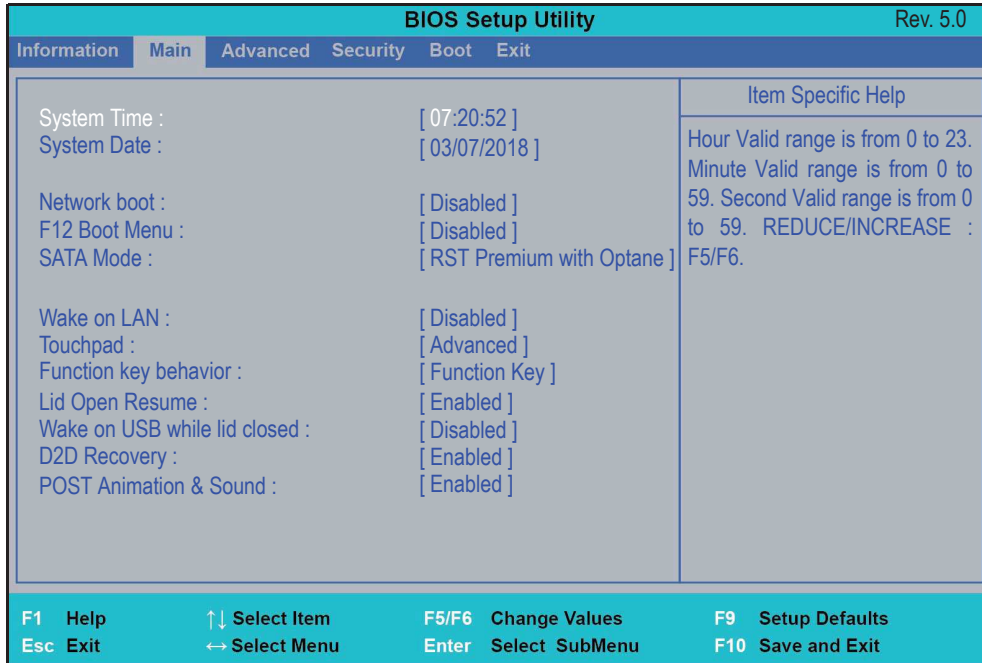


Figure 2-2. BIOS Main

Table 2-2 describes the parameters shown in [Figure 2-2](#).

Table 2-2. BIOS Main

Parameter	Description	Format/Option
System Time	BIOS system time in 24-hour format.	Format: HH:MM:SS (hour:minute:second)
System Date	BIOS system date	Format MM/DD/YYYY (month/day/year)
Network Boot	Option to boot system from LAN (local area network)	Enabled or Disabled
F12 Boot Menu	Option to use boot menu during POST	Enabled or Disabled
SATA Mode	SATA Mode Help	AHCI or RST with Optane or RST Premium with Optane
Wake on LAN	Option to use Wake-on-LAN feature	Enabled or Disabled

Table 2-2. BIOS Main (Continued)

Parameter	Description	Format/Option
Touchpad	Option to choose whether to use advanced or basic touchpad gestures/actions. ⇒ NOTE: You must ensure that the IC2 driver is installed before setting this item to advanced, otherwise the touchpad will not function.	Advanced or Basic
Function key behavior	Option to set either the Function Key or the Media Key as the system default. Hold the <Fn> to activate F1 to F12. ⇒ NOTE: Media functions are only active under Windows. F1 to F12 act as normal function keys during device boot or while in BIOS	Function Key or Media Key
Lid Open Resume	Option to set the lid open resume function	Disabled or Enabled
Wake on USB while Lid Closed	Option to use Wake-on-USB feature when the lid is closed	Enabled or Disabled
D2D Recovery	Option to use D2D Recovery feature	Disabled or Enabled
POST Animation & Sound	Option to Enable/Disable Post Animation and Sound effect	Enabled or Disabled

Advanced

The Advanced tab allows the user to set wireless networking and USB configurations, enable or disable the audio and camera, change the battery threshold setting, and run the disk sanitizer.

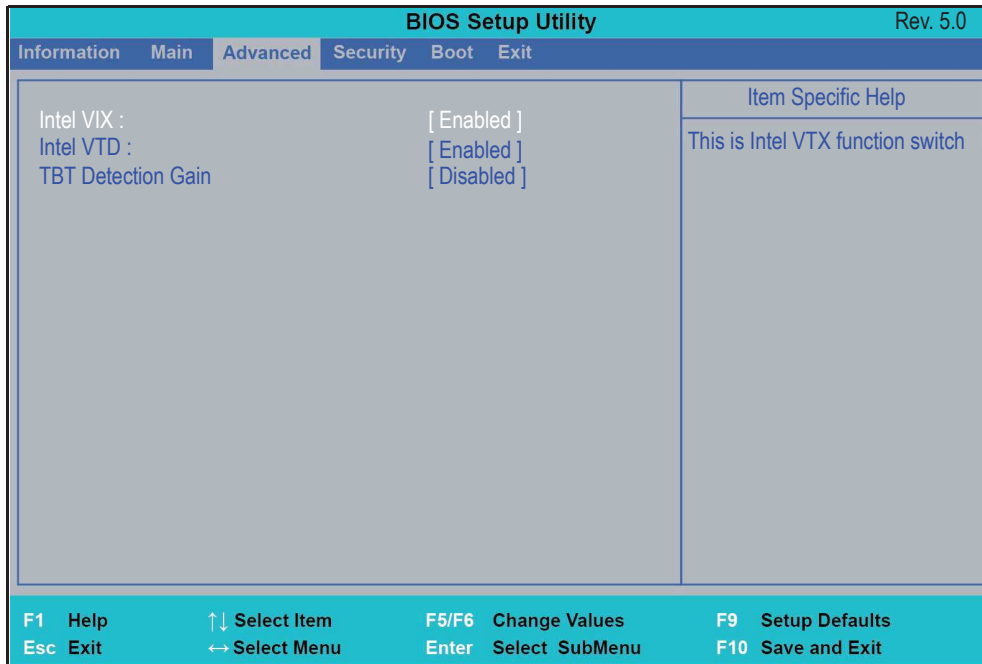


Figure 2-3. BIOS Advanced

Table 2-3 describes the parameters shown in [Figure 2-3](#).

Table 2-3. BIOS Advanced

Parameter	Description	Format/Option
Intel VTx	Option to use Intel Virtualization Technology (VT-x)	Disabled or Enabled
Intel VTD	Option to use Intel Virtualization Technology for Directed I/O (VT-d)	Disabled or Enabled
TBT Detection Gain		Disabled or Enabled

Security

The Security tab shows parameters that safeguard and protect the computer from unauthorized use.

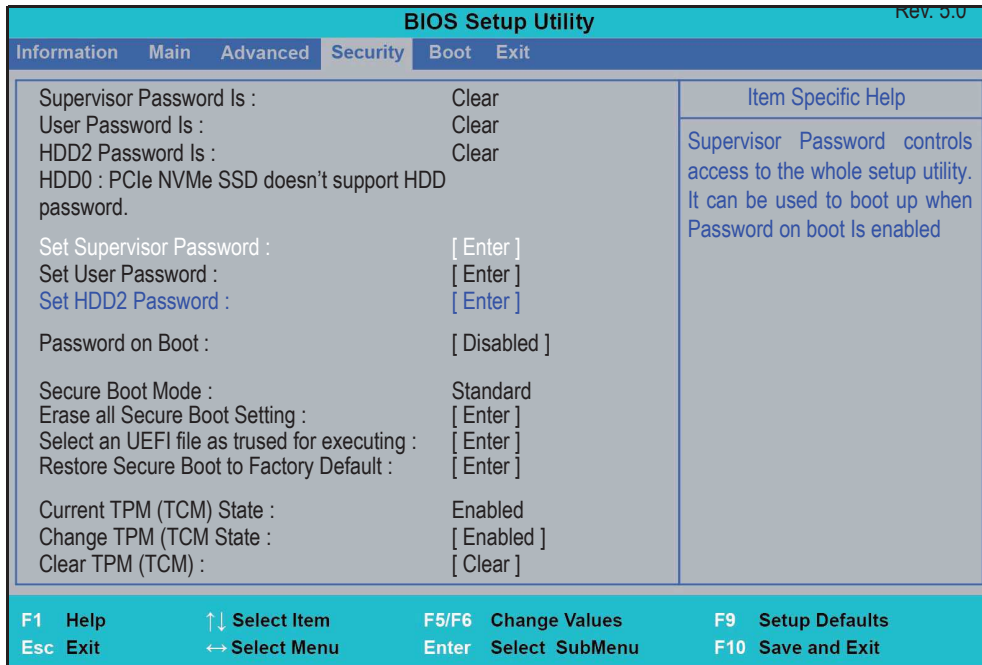


Figure 2-4. BIOS Security

Table 2-4 describes the parameters shown in [Figure 2-4](#).

Table 2-4. BIOS Security

Parameter	Description	Option
Supervisor Password Is	Supervisor password setting	Clear or Set
User Password Is	User password setting	Clear or Set
HDD2 Password Is	HDD2 password setting	Clear or Set
HDD0 Password Is	HDD0 password setting	Clear or Set
Set Supervisor Password	Option to set supervisor password	N/A
Set User Password	Option to set user password	N/A
Set HDD2 Password	Option to set HDD2 password	N/A

Table 2-4. BIOS Security (Continued)

Parameter	Description	Option
Password on Boot	Shows if password is required during system boot ⚠ CAUTION: If Password-on-Boot authentication is enabled, the BIOS password can only be cleared by initiating the Crisis Disk Recovery procedure. Refer to <i>Crisis Disk Recovery</i> .	Disabled or Enabled
Secure Boot Mode	Display current Secure Boot Mode Status. <ul style="list-style-type: none"> • Standard: Default Option. No manual change has been done to secure boot setting or users have previous restored security boot to factory default. • Custom: Contents of the Secure Boot signature database has been modified with "Erase All Secure Boot Setting" or "Select an UEFI File as Trusted Executing". 	Standard or Custom
Erase all Secure Boot Setting	Option to erase all secure boot setting	N/A
Select an UEFI file as trusted for executing	Option to select an UEFI file as trusted for executing	N/A
Restore Secure Boot to Factory Default	Option to restore secure boot to factory default	N/A
Current TPM (TCM) State	Shows the current Trusted Platform Module (TPM) or Trusted Cryptography Module (TCM) state.	Read Only
Change TPM (TCM) State	Option to use TPM Function. The default TPM state for UEFI mode is set to enabled. ⇒ NOTE: To change the TPM state, the supervisor password is required. If the supervisor password has not been set, this option should be a greyed out option.	Disabled or Enabled
Clear TPM (TCM)	Clear the TPM data. ⚠ CAUTION: If the TPM is set to enabled and activated, DO NOT clear the TPM unless prior data stored in the TPM is unwanted.	Clear

⇒ NOTE:

When prompted to enter password, three attempts are allowed before system halts. Resetting BIOS password may require computer be returned to dealer.

Setting a Password

Perform the following to set user or supervisor passwords:

1. Use the \uparrow and \downarrow keys to highlight the `Set Supervisor Password` parameter and press **Enter**. The `Set Supervisor Password` dialog box appears.

⇒ **NOTE:**

To change an existing password, refer to [Changing a Password](#).



Figure 2-5. Set Supervisor Password

2. Type a new password in the `Enter New Password` field. Passwords are not case sensitive and the length must not exceed 12 alphanumeric characters (A-Z, a-z, 0-9). Retype the password in the `Confirm New Password` field.

+ **IMPORTANT:**

Use care when typing a password. Characters do not appear on the screen.

3. Press **Enter**. After setting the password, the computer sets the `User Password` parameter to `Set`.

⇒ **NOTE:**

`Password on Boot` must be set to `Enabled` to activate password feature.

4. Press **F10** to save changes and exit *BIOS Setup Utility*.

Removing a Password

Perform the following:

1. Use the \uparrow and \downarrow keys to highlight `Set Supervisor Password` and press **Enter**. The `Set Supervisor Password` dialog box appears:



Figure 2-6. Set Supervisor Password

2. Type current password in `Enter Current Password` field and press **Enter**.
3. Press **Enter** twice without typing anything in `Enter New Password` and `Confirm New Password` fields. Computer will set `Supervisor Password` parameter to `Clear`.
4. Press **F10** to save changes and exit the *BIOS Setup Utility*.

Changing a Password

1. Use the **↑** and **↓** keys to highlight `Set Supervisor Password` and press **Enter**. The `Set Supervisor Password` dialog box appears.



Figure 2-7. Set Supervisor Password

2. Type current password in `Enter Current Password` field and press **Enter**.
3. Type new password in `Enter New Password` field. Retype new password in `Confirm New Password` field.
4. Press **Enter**. Computer sets `Supervisor Password` parameter to `Set`.

⇒ **NOTE:**

`Password on Boot` must be set to `Enabled` to activate the password feature.

5. Press **F10** to save changes and exit *BIOS Setup Utility*.

If the verification is OK, the screen will show as follows.



Figure 2-8. Setup Notice

The password setting is complete after the user presses **Enter**.

If the password entered does not match the current password, the screen shows the `Setup Warning` dialog. (Figure 2-9)



Figure 2-9. Setup Warning: Invalid Password

If new password and confirm new password strings do not match, the Setup Warning dialog appears (Figure 2-10).



Figure 2-10. Setup Warning: Passwords Do Not Match

Boot

The Boot tab allows changes to the order of boot devices used to load the operating system. Bootable devices include the:

- Onboard hard disk drive

Use ↑ and ↓ keys to select a device and press **F5** or **F6** to change the value.

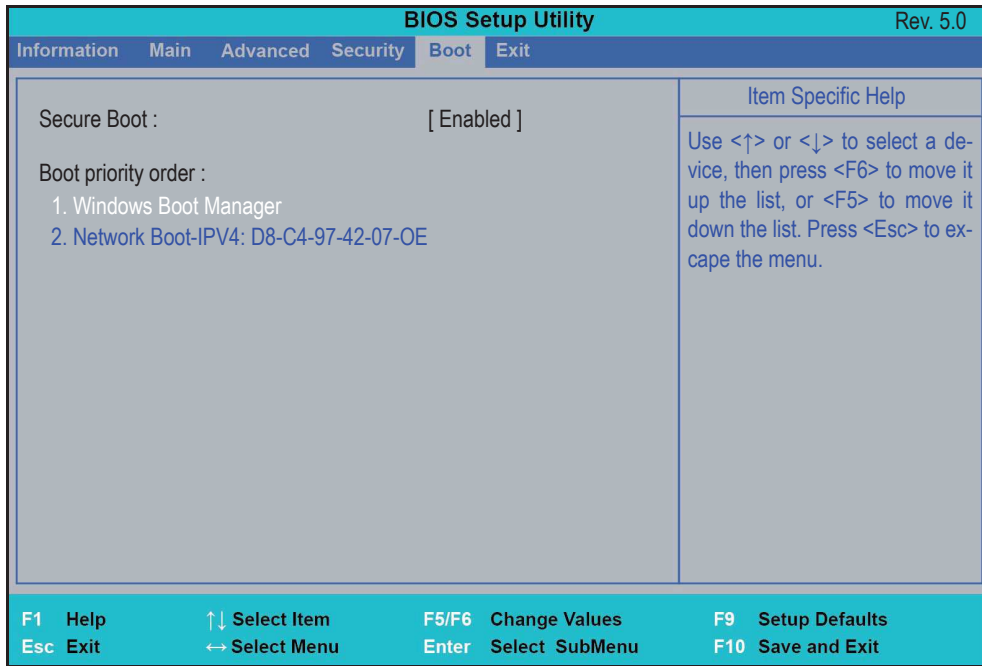


Figure 2-11. BIOS Boot

Exit

The Exit tab allows users to save or discard changes and quit the *BIOS Setup Utility*.

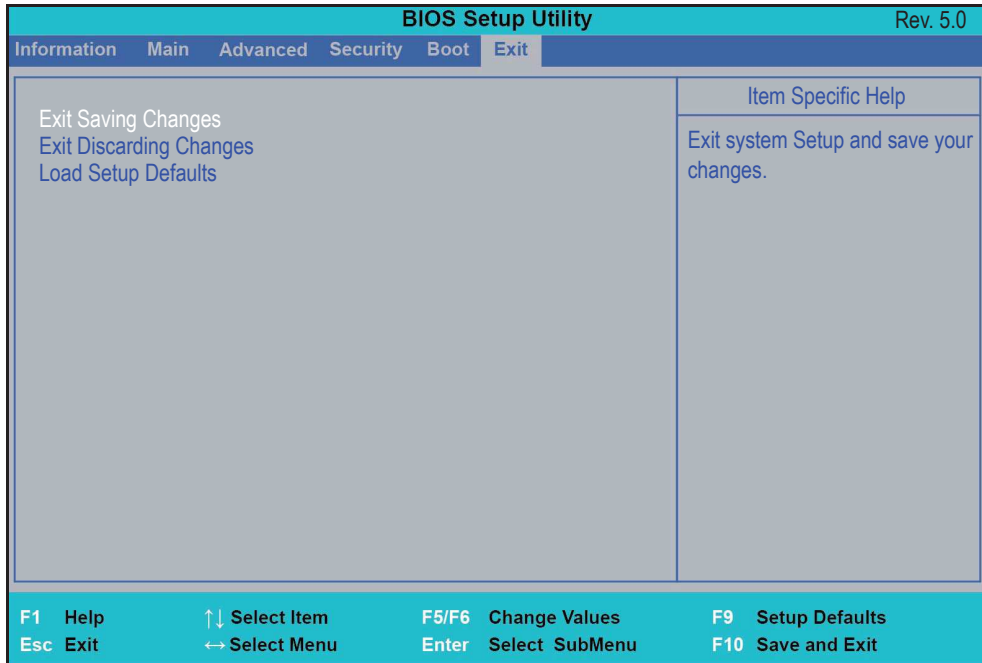


Figure 2-12. BIOS Exit

Table 2-5 describes the parameters in [Figure 2-12](#).

Table 2-5. BIOS Exit

Parameter	Description
Exit Saving Changes	Exit BIOS utility and save setup item changes to system.
Exit Discarding Changes	Exit BIOS utility without saving setup item changes to system.
Load Setup Defaults	Load setup default values for all setup items.