

Remove HDD Module

1. Remove 4 screws and lift to release the HDD bracket.

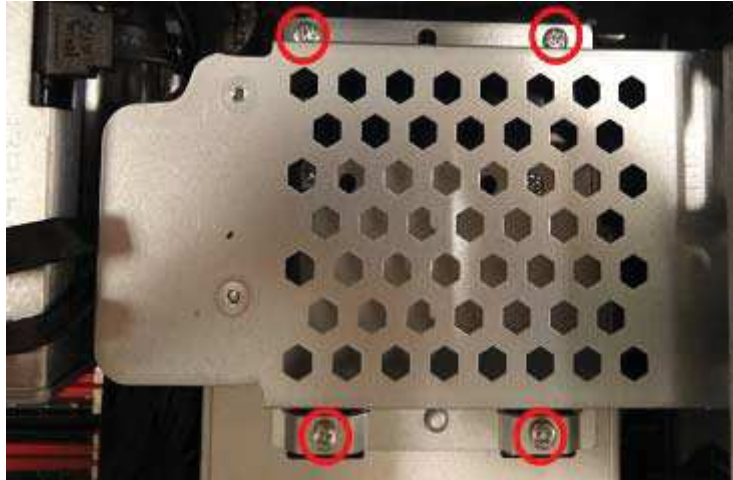


Figure 3-26. HDD Module

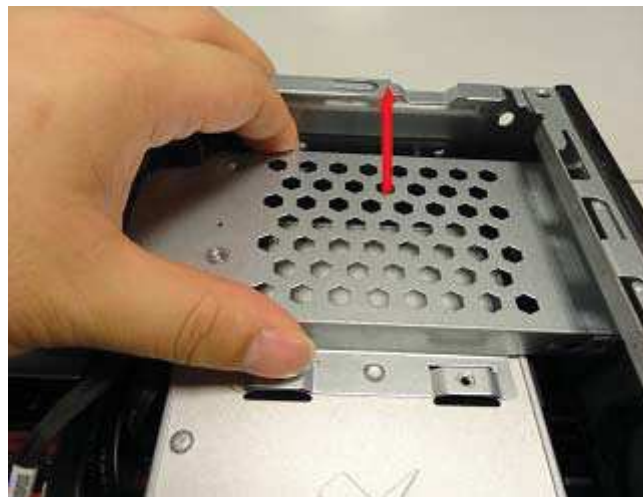



Figure 3-27. HDD Module

Table 3-7. Screws

Step	Screw	Quantity	Screw Type	Torque/kgfcm
HDD Module Removal	SCREW M3*5L B-ZN #2	4		5.0±0.5

2. Disconnect the SATA cable and make the cable out of the latches.



Figure 3-28. HDD Module

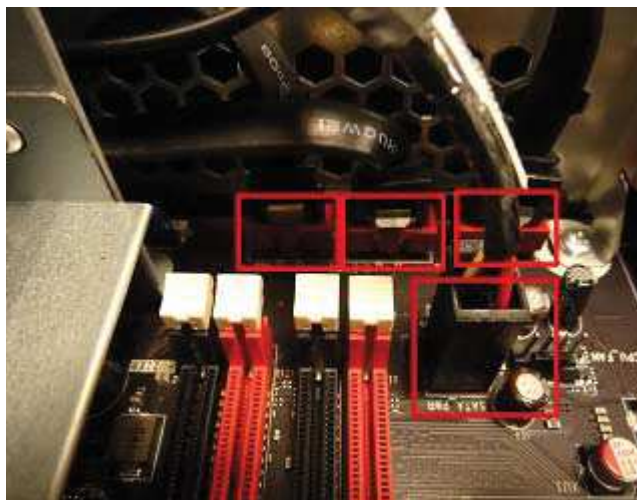


Figure 3-29. HDD Module



Figure 3-30. HDD Module

3. Remove 2 screws to separate the SATA cable from the HDD bracket.

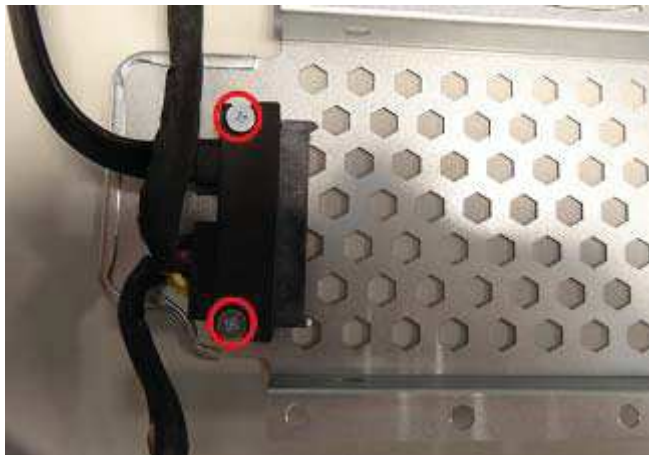



Figure 3-31. HDD Module

Table 3-8. Screws

Step	Screw	Quantity	Screw Type	Torque/kgfcm
HDD Module Removal	SCREW M3*8L K W-ZN #1	2		5±0.5

4. Remove 4 screws and lift to remove HDD bracket ASSY.

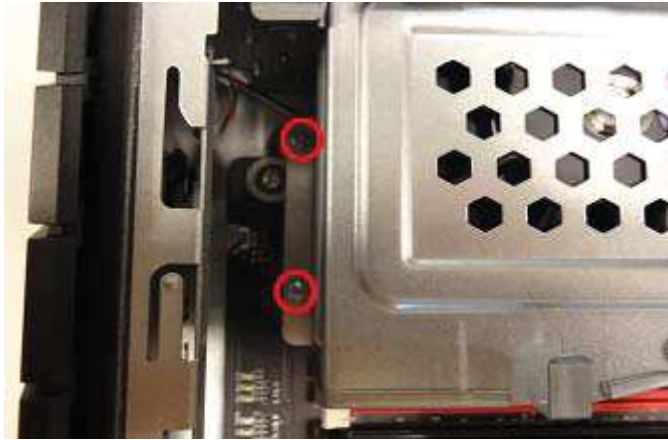


Figure 3-32. HDD Module

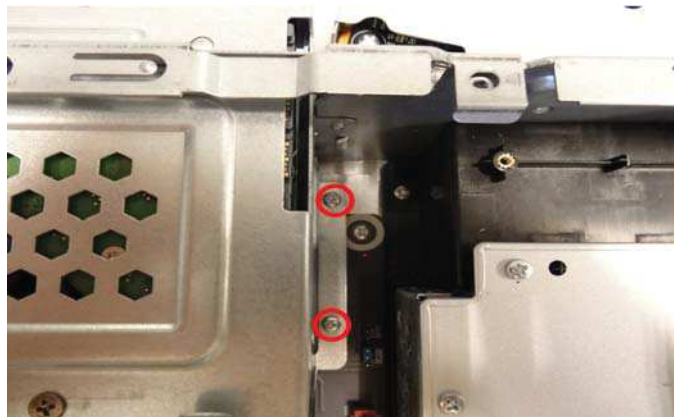


Figure 3-33. HDD Module

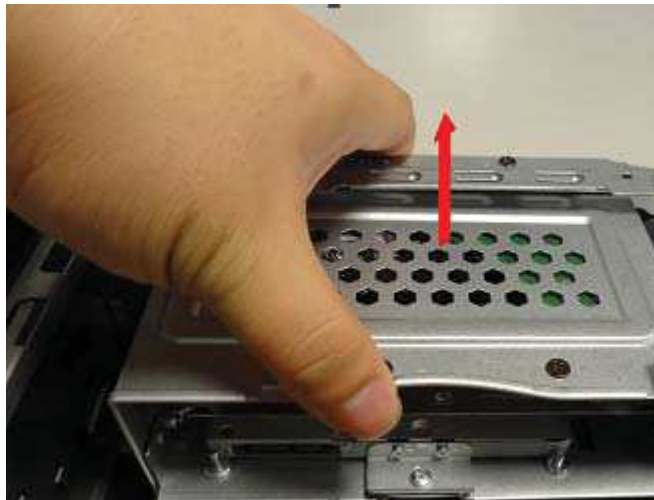



Figure 3-34. HDD Module

Table 3-9. Screws

Step	Screw	Quantity	Screw Type	Torque/kgfcm
HDD Module Removal	SCREW M3*5L B-ZN #2	4		5.0±0.5

- Remove 2 screws and lift to remove the chassis support bracket.

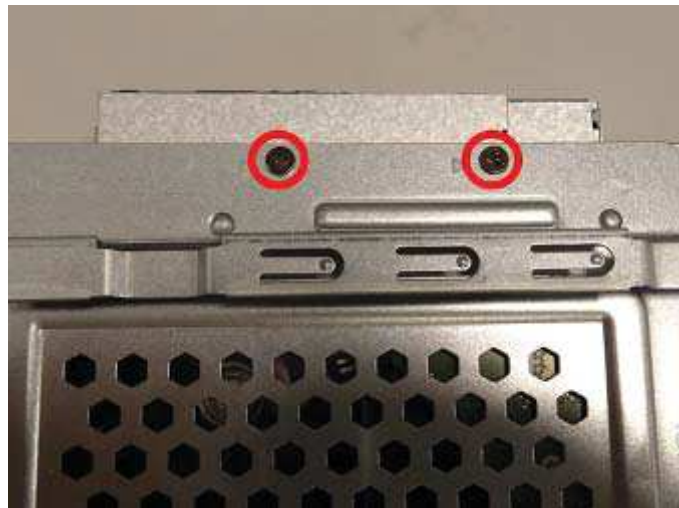



Figure 3-35. HDD Module



Figure 3-36. HDD Module

Table 3-10. Screws

Step	Screw	Quantity	Screw Type	Torque/kgfcm
HDD Module Removal	SCREW #6-32*6L K B-NI #2	2		5±0.5

- Remove 2 screws and remove the HDD module.



Figure 3-37. HDD Module

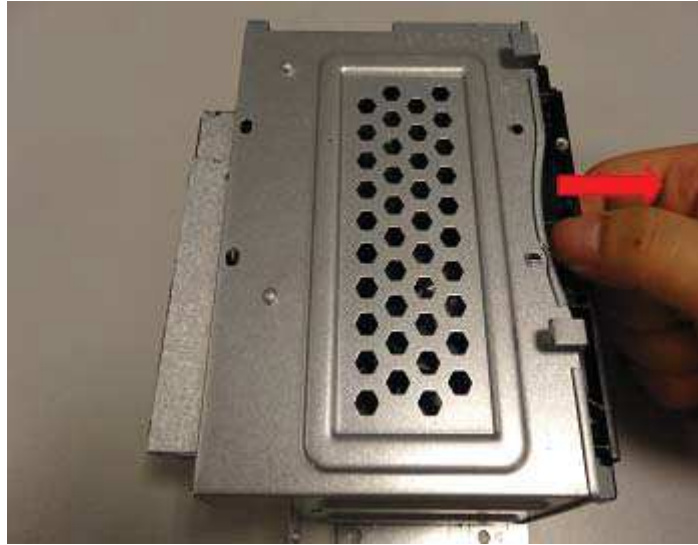



Figure 3-38. HDD Module

Table 3-11. Screws

Step	Screw	Quantity	Screw Type	Torque/kgfcm
HDD Module Removal	SCREW #6-32*6L K B-NI #2	2		5±0.5