

Gateway

GWTN141-5 SSD Installation Guide

Make sure your computer is powered off

Items you will need:

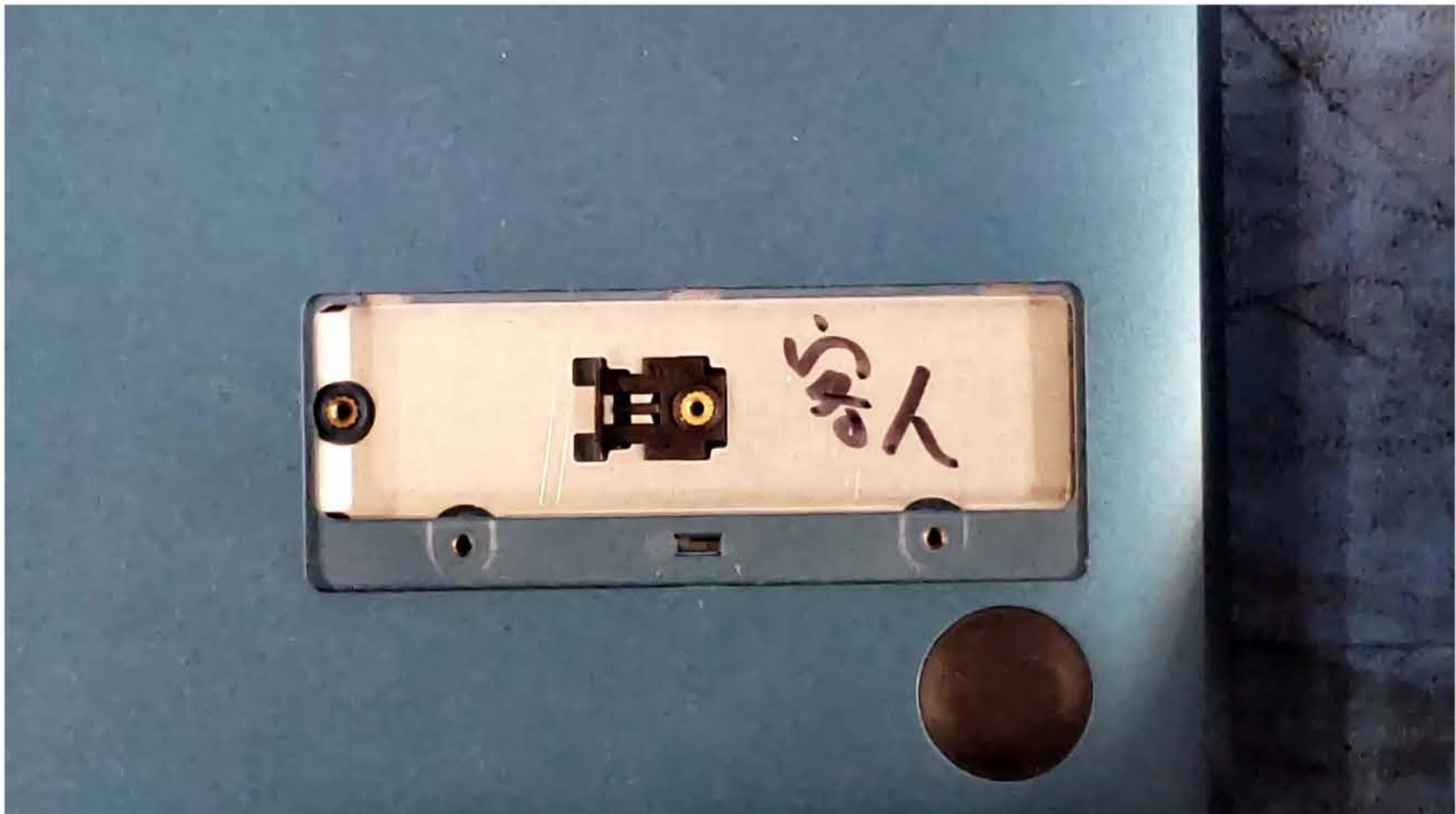
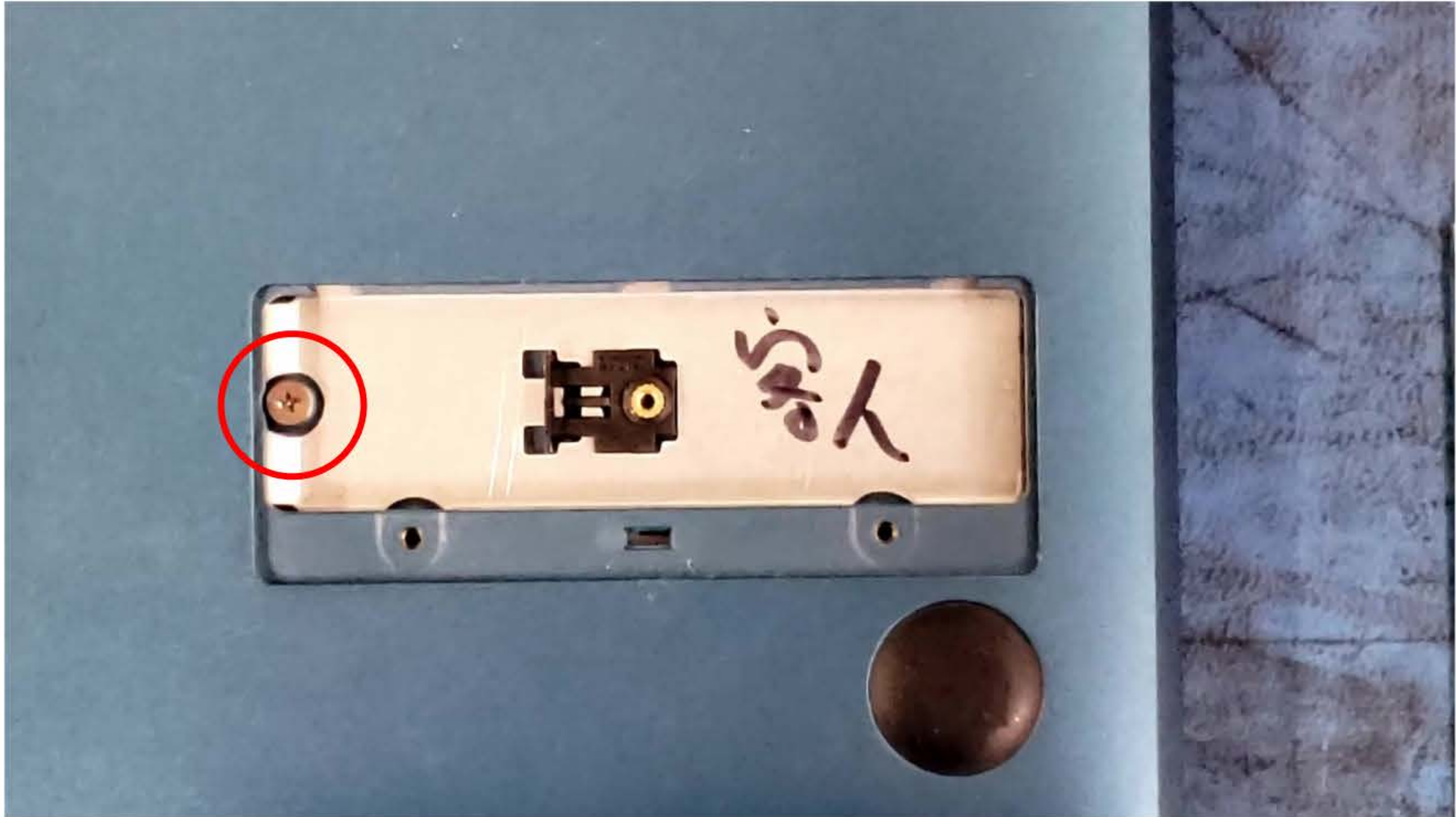
- Philips's screwdriver
- SATA SSD

Getting started

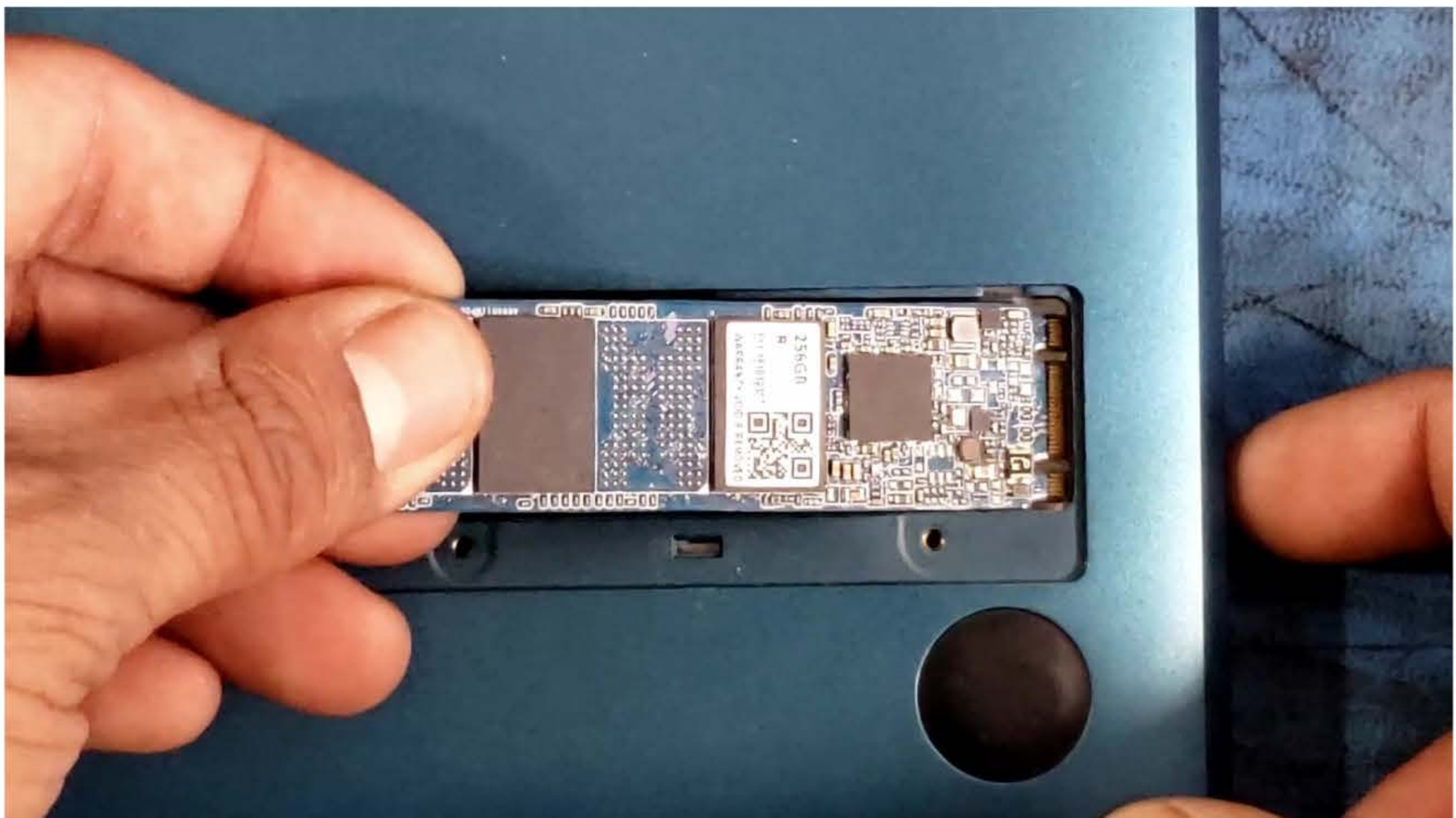
1) Unscrew the 2 screws highlighted in the first image and then remove the SSD cover.



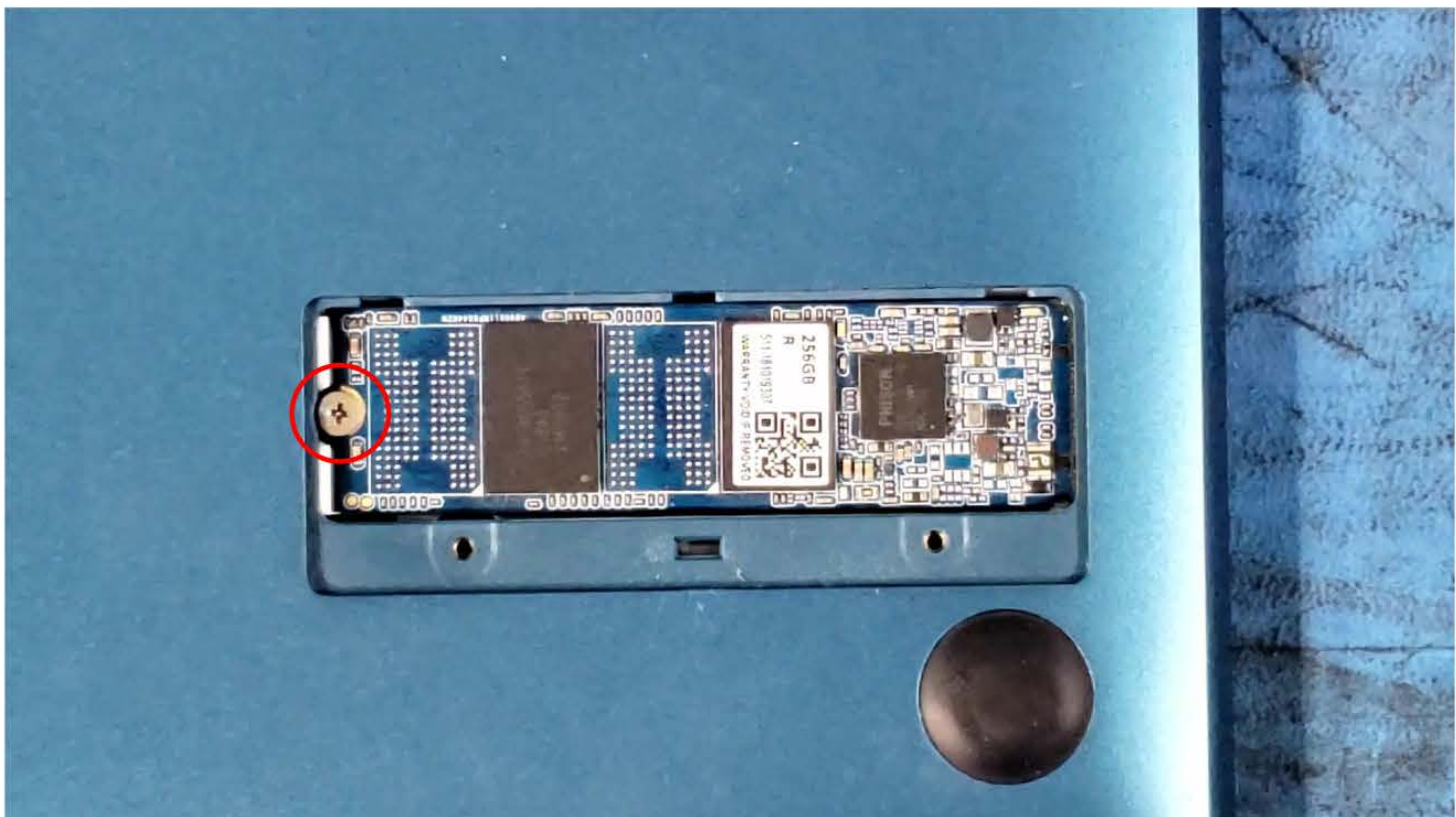
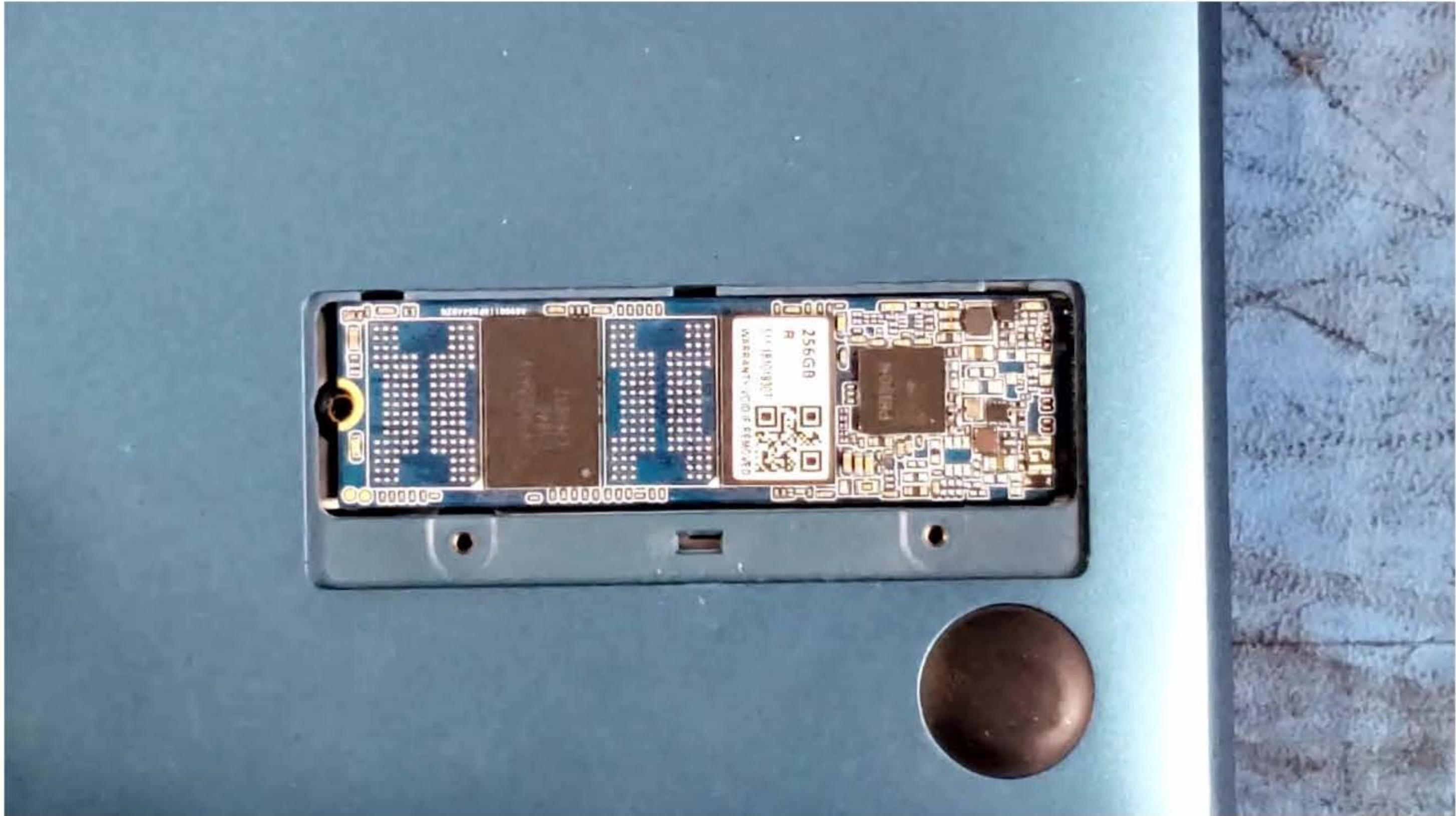
2) Remove the screw highlighted in the image.



3) Insert the SSD into the slot.



4) Use the screw we removed in step 2 to screw down the other side of the SSD down.



5) Insert the SSD cover and screw it back in using the screws we removed in step 1.

