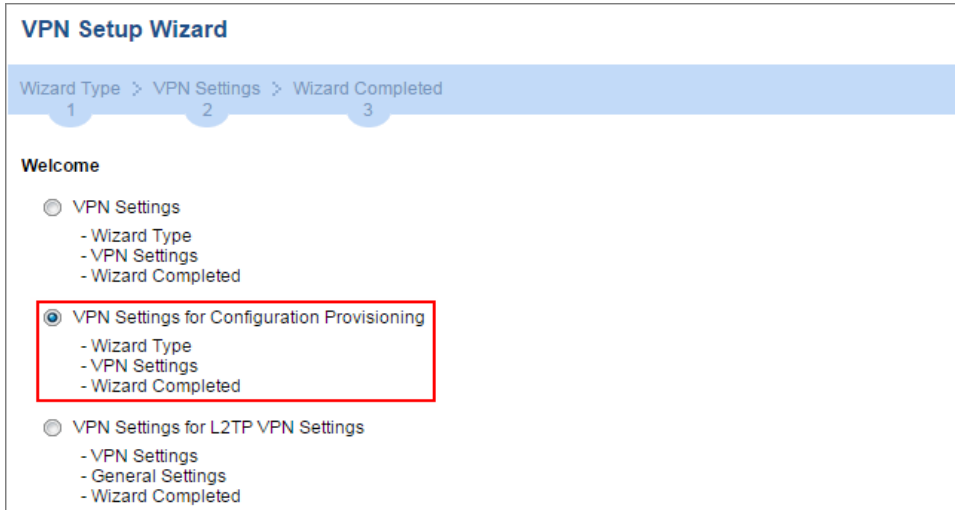


Set up the ZyWALL/USG IPSec VPN Tunnel

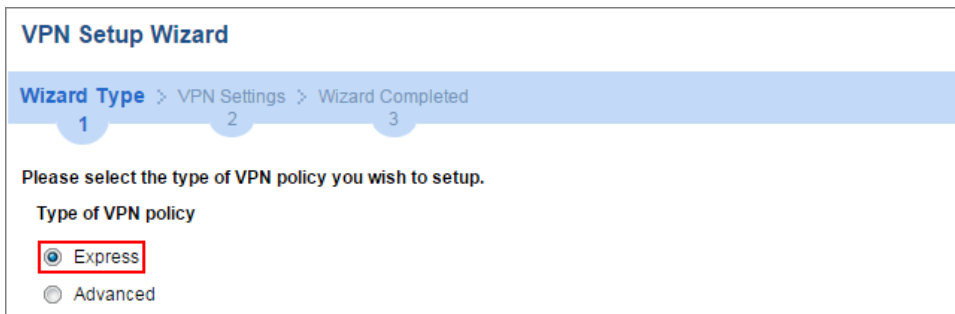
In the ZyWALL/USG, go to **CONFIGURATION > Quick Setup > VPN Setup Wizard**, use the **VPN Settings for Configuration Provisioning** wizard to create a VPN rule that can be used with the ZyWALL IPSec VPN Client. Click **Next**.

Quick Setup > VPN Setup Wizard > Welcome



Choose **Express** to create a VPN rule with the default phase 1 and phase 2 settings and use a pre-shared key to be the authentication method. Click **Next**.

Quick Setup > VPN Setup Wizard > Wizard Type



Type the **Rule Name** used to identify this VPN connection (and VPN gateway). You may use 1-31 alphanumeric characters. This value is case-sensitive. Click **Next**.

Quick Setup > VPN Setup Wizard > Welcome > Wizard Type > VPN Settings-1

VPN Setup Wizard

Wizard Type > **VPN Settings** > Wizard Completed

1 2 3

Express Settings

Scenario

Rule Name: **WIZ_VPN_PROVISIONING**

Application Scenario: Remote Access (Server Role)

Type a secure **Pre-Shared Key** (8-32 characters). Set **Local Policy** to be the IP address range of the network connected to the ZyWALL/USG.

Quick Setup > VPN Setup Wizard > Welcome > Wizard Type > VPN Settings-2

VPN Setup Wizard

Wizard Type > **VPN Settings** > Wizard Completed

1 2 3

Express Settings

My Address (interface): wan1

Configuration

Secure Gateway: Any

Pre-Shared Key: **zyx12345**

Local Policy (IP/Mask): **192.168.1.0 / 255.255.255.0**

Remote Policy (IP/Mask): Any

This screen provides a read-only summary of the VPN tunnel. Click **Save**.

Quick Setup > VPN Setup Wizard > Welcome > Wizard Type > VPN Settings-3

VPN Setup Wizard

Wizard Type > **VPN Settings** > Wizard Completed

1 2 3

Express Settings

Summary

Rule Name: WIZ_VPN_PROVISIONING

Secure Gateway: Any

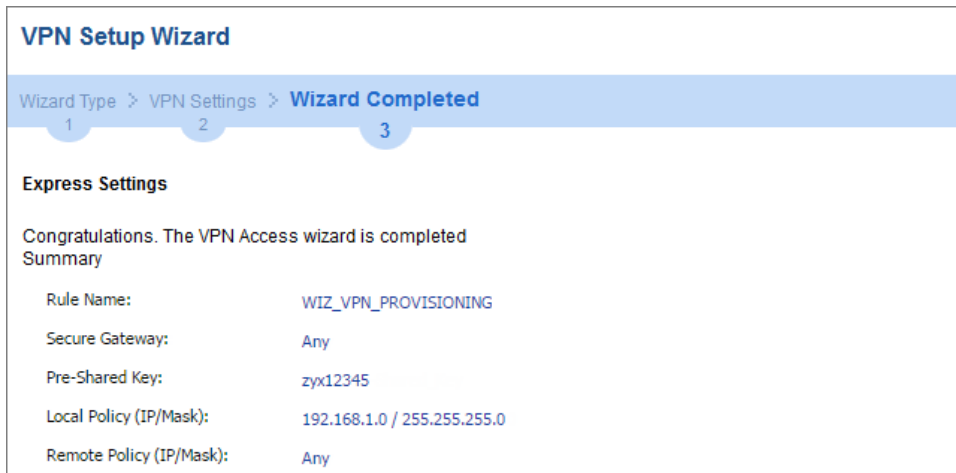
Pre-Shared Key: zyx12345

Local Policy (IP/Mask): 192.168.1.0 / 255.255.255.0

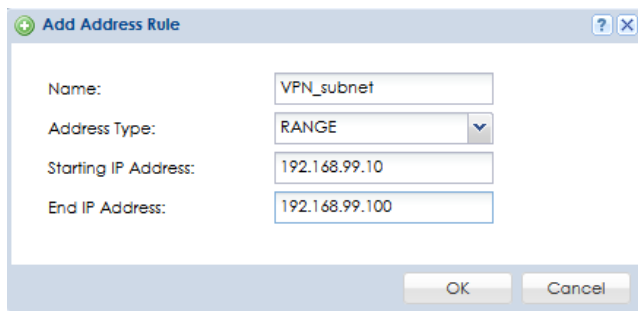
Remote Policy (IP/Mask): Any

Now the rule is configured on the ZyWALL/USG. The Phase 1 rule settings appear in the **VPN > IPSec VPN > VPN Gateway** screen and the Phase 2 rule settings appear in the **VPN > IPSec VPN > VPN Connection** screen. Click **Close** to exit the wizard.

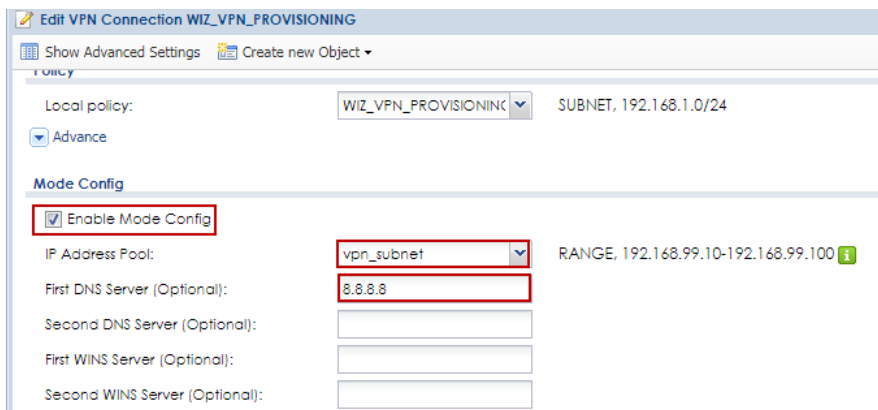
Quick Setup > VPN Setup Wizard > Welcome > Wizard Type > VPN Settings > Wizard Completed



Go to **CONFIGURATION > VPN > IPSec VPN > VPN connection**. Enable **Mode config** for IPSec VPN client connection, create address object



Select the address object for Mode Config VPN IP address Pool.



Go to **CONFIGURATION > Object > User/Group > Add A User** and create a user account for the ZyWALL IPSec VPN Client user.

CONFIGURATION > Object > User/Group > Add A User

Add A User

User Configuration

User Name : Remote_Client

User Type: User

Password:

Retype:

Description: Local User

Email: @zyxel.com.t

Mobile Number: 921

Authentication Timeout Settings

Use Default Settings Use Manual Settings

Lease Time: 1440 minutes

Reauthentication Time: 1440 minutes

OK Cancel

Go to **CONFIGURATION > VPN > IPSec VPN > Configuration Provisioning**. In the **General Settings** section, select the **Enable Configuration Provisioning**. Then, go to the **Configuration** section and click **Add** to bind a configured **VPN Connection** to **Allowed User**. Click **Activate** and **Apply** to save the configuration.

CONFIGURATION > VPN > IPSec VPN > Configuration Provisioning

General Settings

Enable Configuration Provisioning

Authentication

Client Authentication Method: default

Configuration

Add Edit Remove Activate Inactivate Move

#	Status	Priority	Type	VPN Connection	Allowed User
1		1	4in4	WIZ_VPN_PROVISIONING	Remote_Client

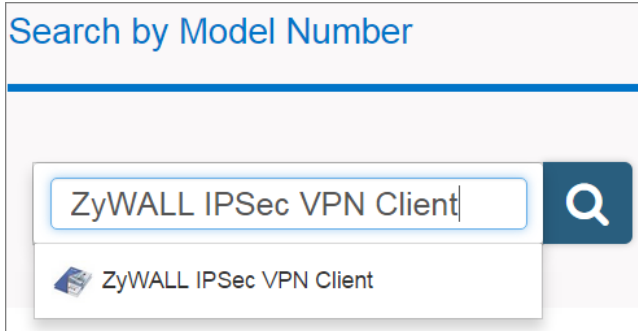
Page 1 of 1 | Show 50 items | Displaying 1 - 1 of 1

Apply Reset

Set up the ZyWALL IPSec VPN Client

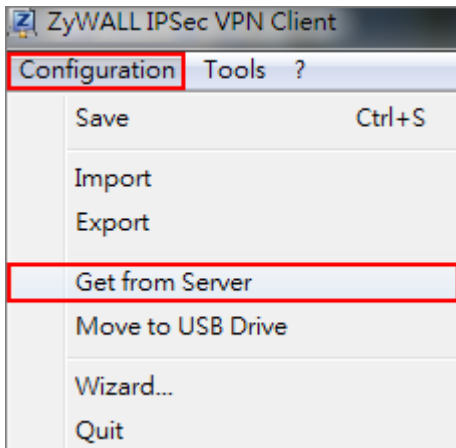
Download **ZyWALL IPSec VPN Client** software from ZyXEL Download Library:

http://www.zyxel.com/support/download_landing.shtml



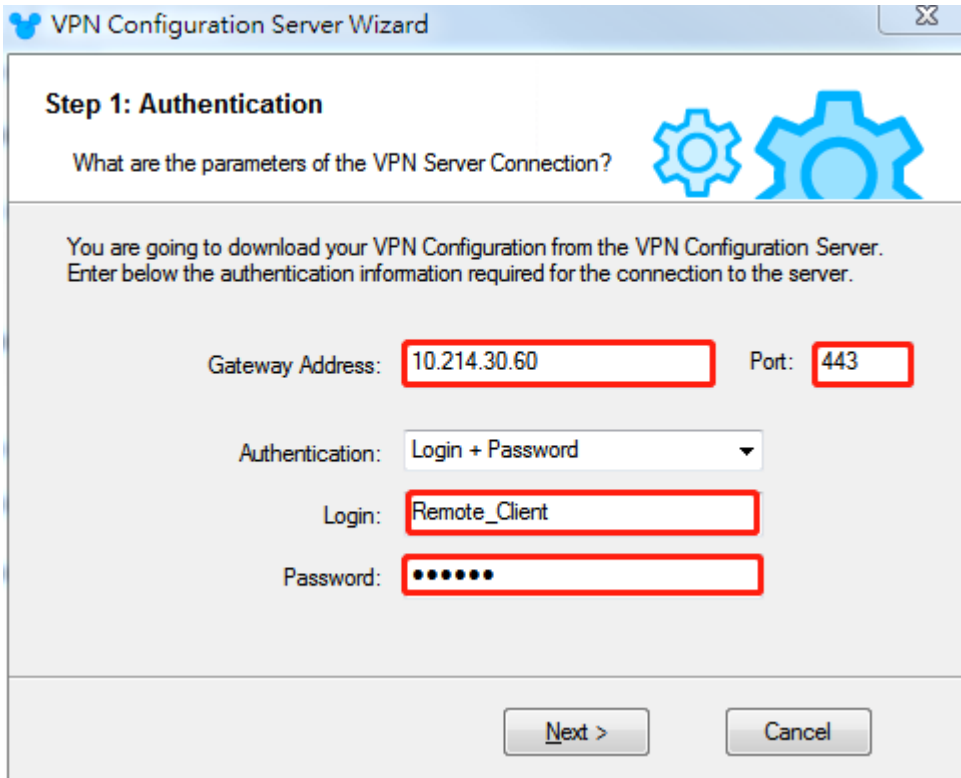
Open ZyWALL IPSec VPN Client, select **CONFIGURATION > Get from Server**.

CONFIGURATION > Get from Server



Enter the WAN IP address or URL for the ZyWALL/USG in the **Gateway Address**. If you changed the default HTTPS **Port** on the ZyWALL/USG, and then enter the new one here. Enter the **Login** user name and **Password** exactly as configured on the ZyWALL or external authentication server. Click **Next**, you will see it's processing VPN configuration from the server.

CONFIGURATION > Get from Server > Step 1: Authentication



VPN Configuration Server Wizard

Step 1: Authentication

What are the parameters of the VPN Server Connection?

You are going to download your VPN Configuration from the VPN Configuration Server. Enter below the authentication information required for the connection to the server.

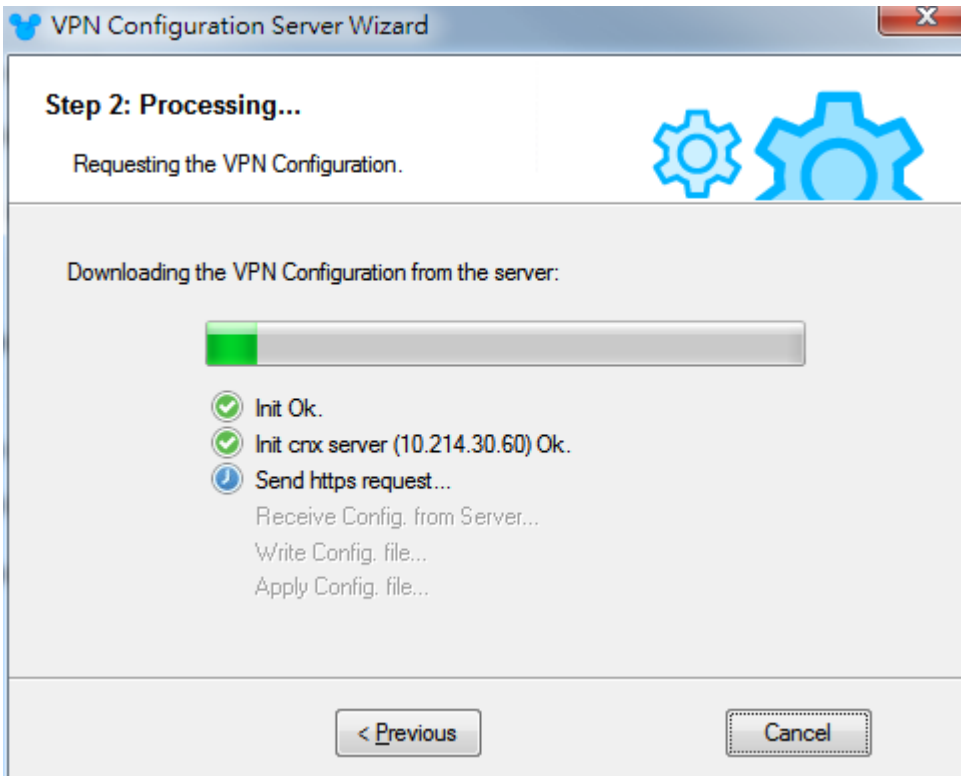
Gateway Address: Port:

Authentication:

Login:

Password:

CONFIGURATION > Get from Server > Step 2: Processing



VPN Configuration Server Wizard

Step 2: Processing...

Requesting the VPN Configuration.

Downloading the VPN Configuration from the server:

- Init Ok.
- Init crx server (10.214.30.60) Ok.
- Send https request...
 - Receive Config. from Server...
 - Write Config. file...
 - Apply Config. file...

Then, you will see the **Configuration successful** page, click **OK** to exit the wizard.

CONFIGURATION > Get from Server > Configuration successful

