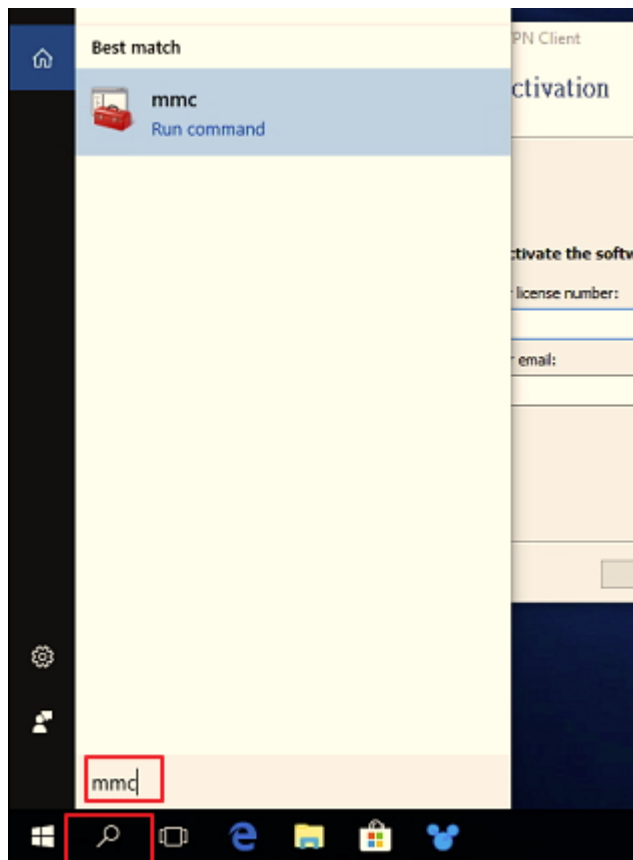
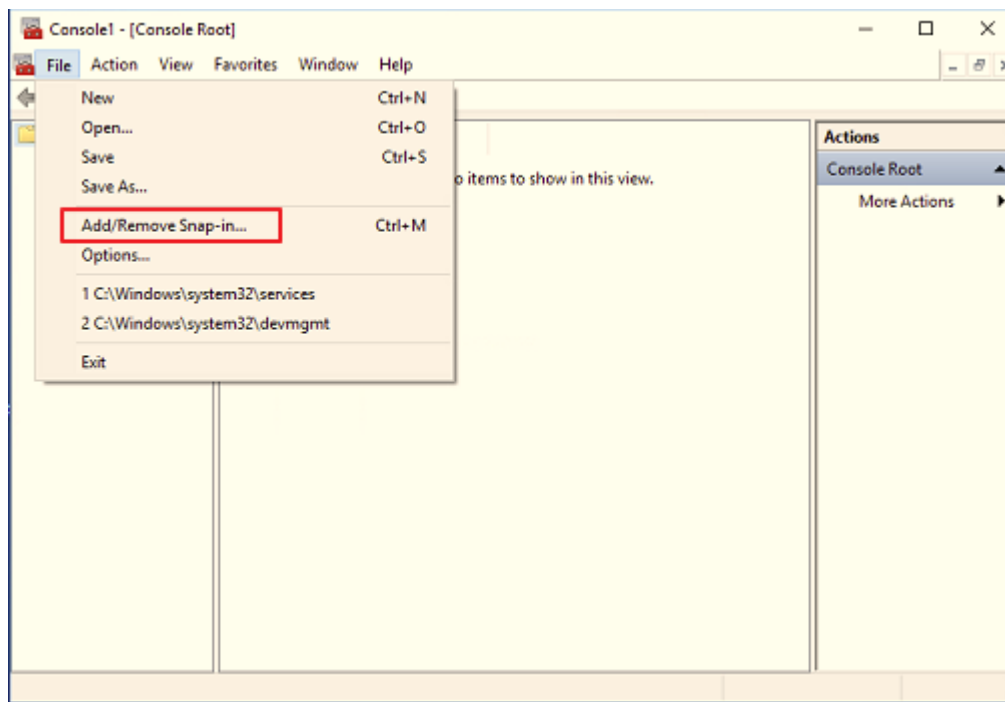


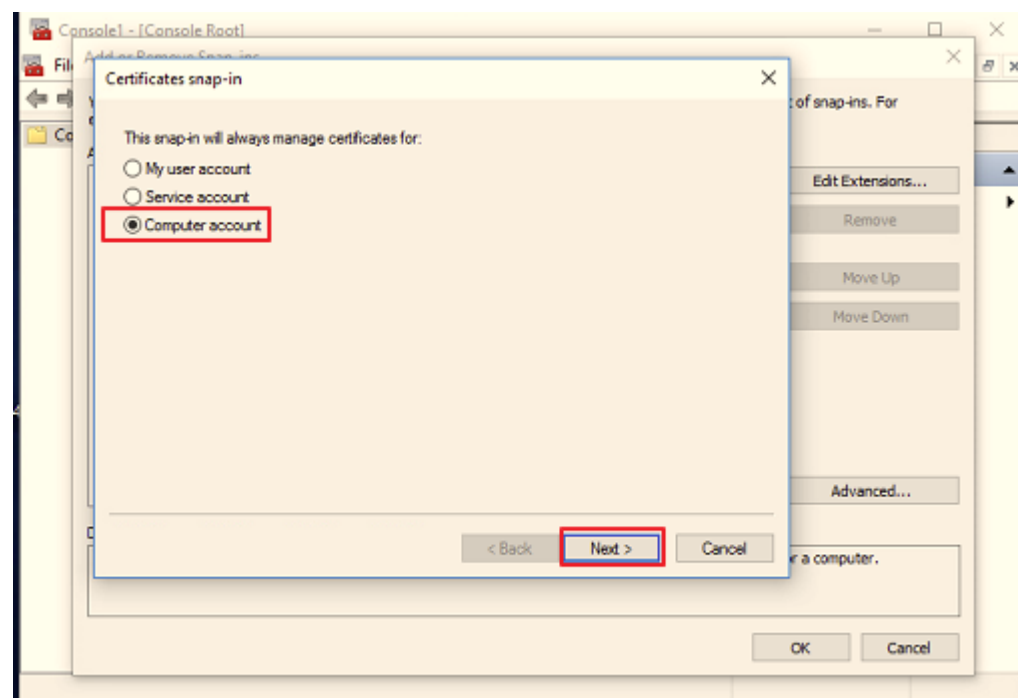
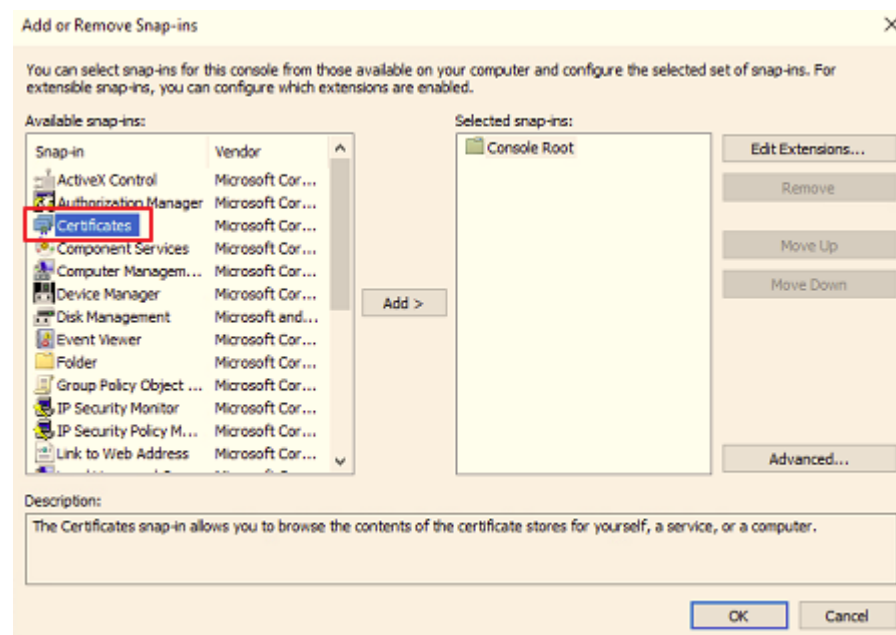
How to import the certificate to PC in correct way.
Type MMC on Search field.

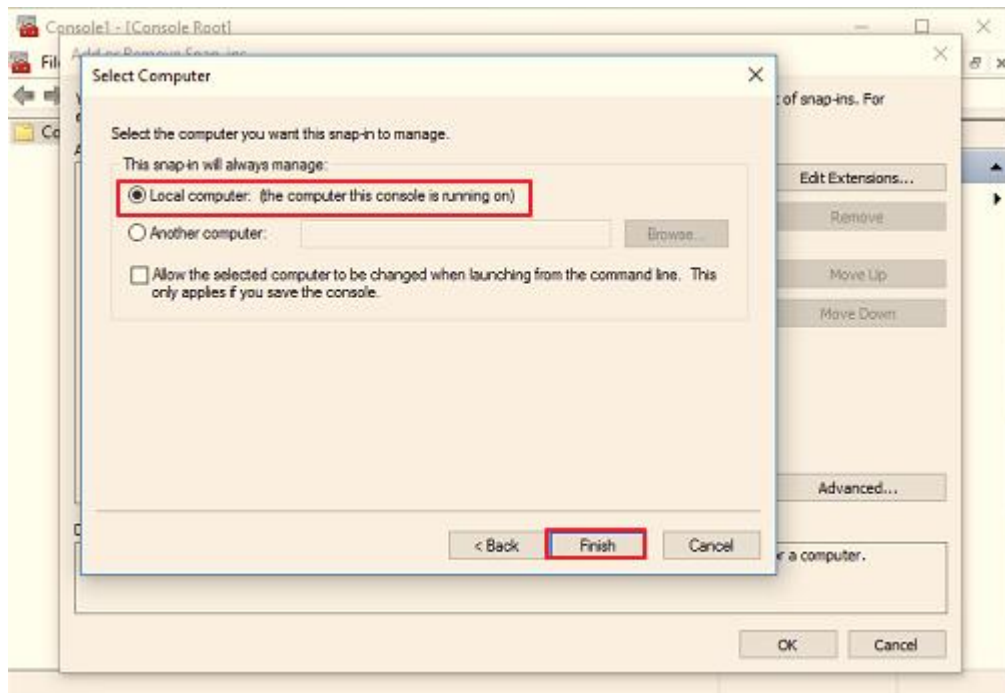


Select Add/Remove....

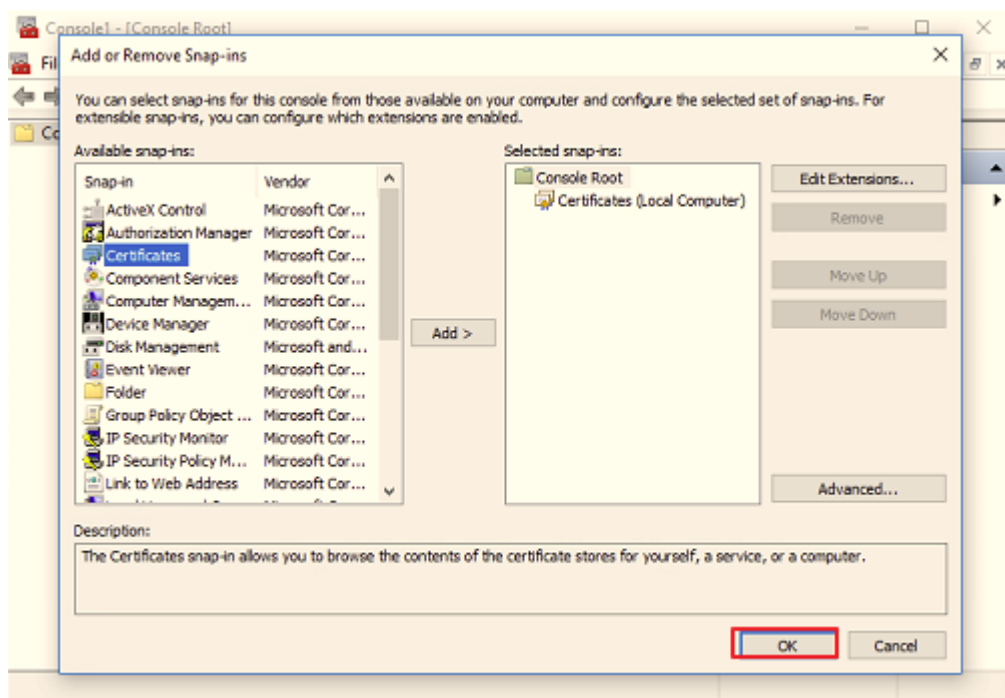


Click Certificate icon

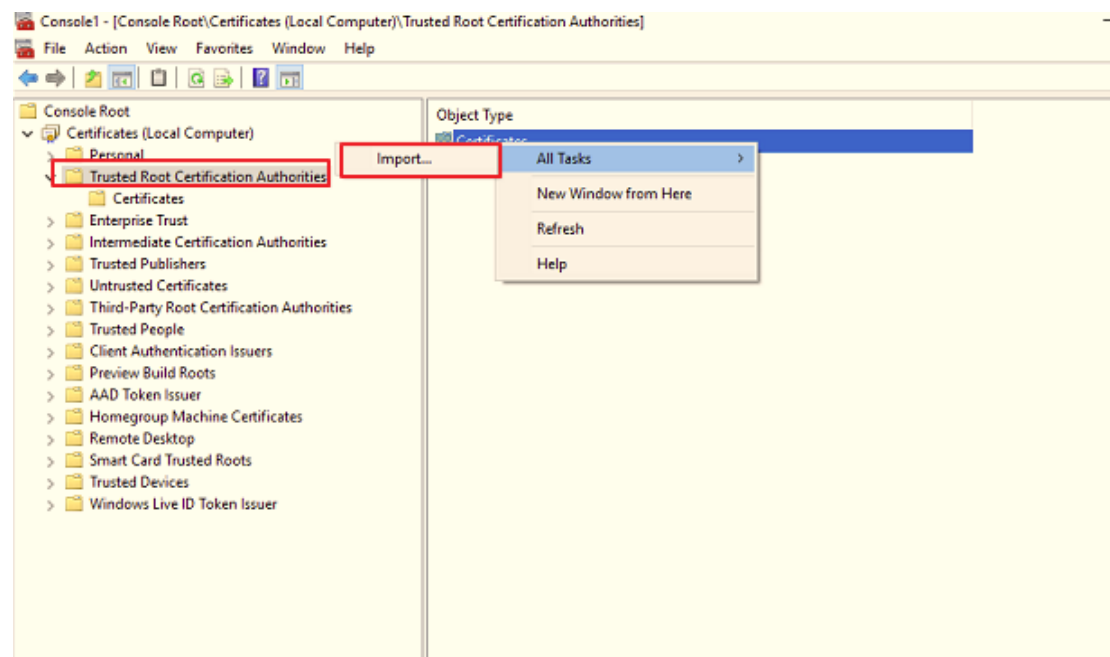




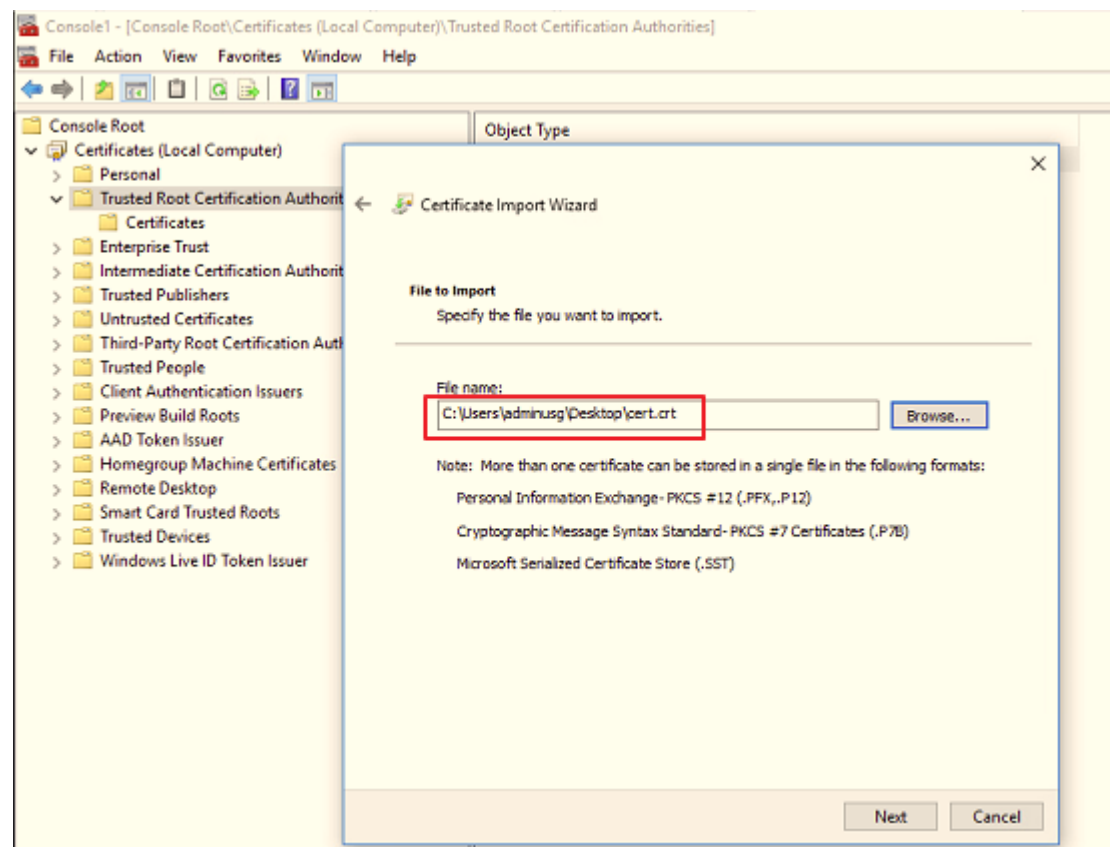
Press Ok



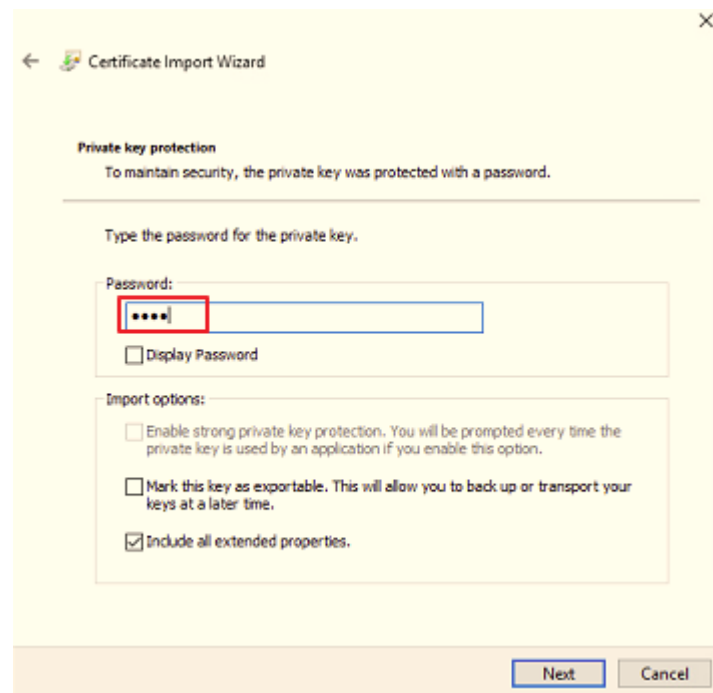
Click on the right button of your mouse on an icon of "Certificate", and select Import



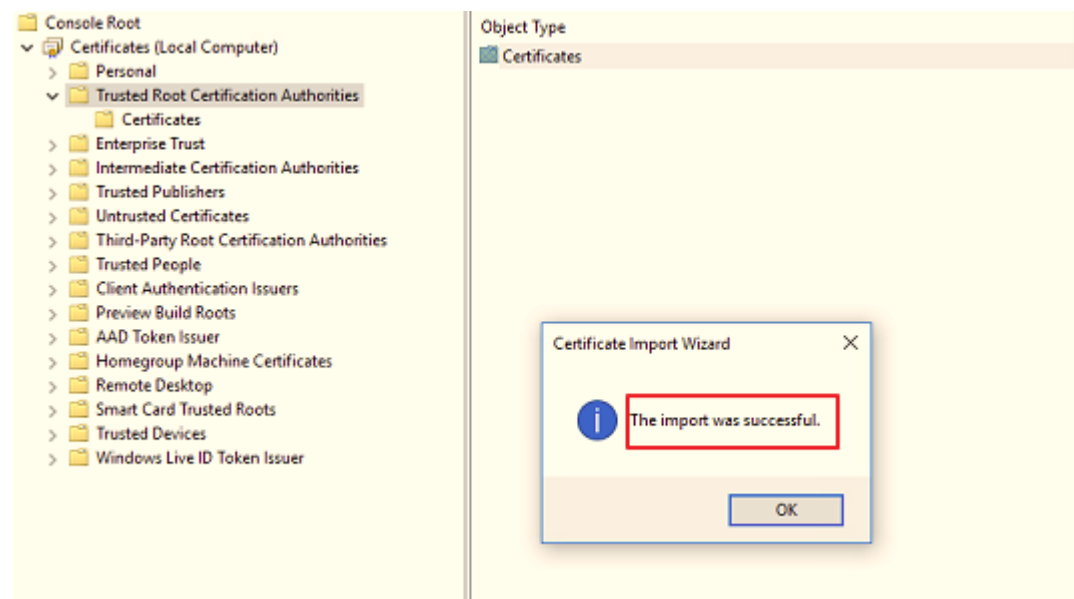
Select the Certificate which you exported from USG



Press the password which need to be the same as you typed when you export Cert from USG.



The message of cert was imported successful will show up.



Console1 - [Console Root\Certificates (Local Computer)\Trusted Root Certification Authorities\Certificates]

File Action View Favorites Window Help

Issued To	Issued By	Expiration Date	Intended
10.214.30.74	10.214.30.74	2020/11/14	Server A
AddTrust External CA Root	AddTrust External CA Root	2020/5/30	Server A
Baltimore CyberTrust Root	Baltimore CyberTrust Root	2025/5/13	Server A
Certum Trusted Network CA	Certum Trusted Network CA	2029/12/31	Server A
Class 3 Public Primary Certificat...	Class 3 Public Primary Certificatio...	2028/8/2	Secure E
Copyright (c) 1997 Microsoft C...	Copyright (c) 1997 Microsoft Corp.	1999/12/31	Time Sta
DigiCert Assured ID Root CA	DigiCert Assured ID Root CA	2031/11/10	Server A
DigiCert Global Root CA	DigiCert Global Root CA	2031/11/10	Server A
DigiCert High Assurance EV Ro...	DigiCert High Assurance EV Root ...	2031/11/10	Server A
Equifax Secure Certificate Auth...	Equifax Secure Certificate Authority	2018/8/23	Secure E
GeoTrust Global CA	GeoTrust Global CA	2022/5/21	Server A
GeoTrust Primary Certification ...	GeoTrust Primary Certification Au...	2036/7/17	Server A
GeoTrust Primary Certification ...	GeoTrust Primary Certification Au...	2037/12/2	Server A
GlobalSign Root CA	GlobalSign Root CA	2028/1/28	Server A
Go Daddy Class 2 Certification ...	Go Daddy Class 2 Certification Au...	2034/6/30	Server A
GTE CyberTrust Global Root	GTE CyberTrust Global Root	2018/8/14	Secure E
Hotspot 2.0 Trust Root CA - 03	Hotspot 2.0 Trust Root CA - 03	2043/12/8	Server A
Microsoft Authenticode(tm) Ro...	Microsoft Authenticode(tm) Root...	2000/1/1	Secure E
Microsoft Root Authority	Microsoft Root Authority	2020/12/31	<All>

The way to import to browser, please check this link:

<https://support.securly.com/hc/en-us/articles/206081828-How-to-manually-install-the-Securly-SSL-certificate-in-Chrome>