



Parasoft SFTP Client Tool

About the Plugin

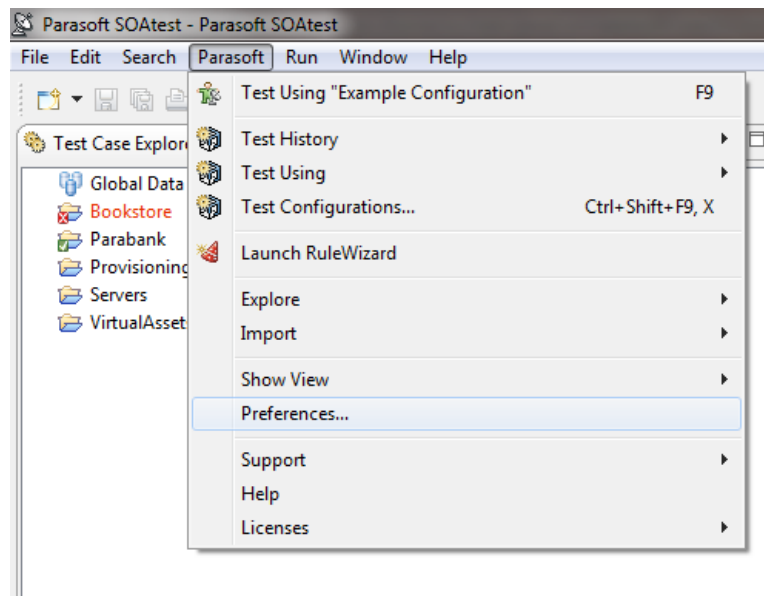
The SFTP Client tool is a tool extension for Parasoft SOAtest and Virtualize. It is a standard implementation of SFTP V3. The client performs a single SFTP session of up to 10 commands using public key authentication. Any standard SFTP commands can be used—check the documentation for your server to see which commands are available. Raw SFTP traffic is supplied as an output to the tool—much as it is with the FTP Client tool. Any failures during tool execution are reported as Quality Tasks; if failures occur, server connections are closed and tool execution terminates.

Installation

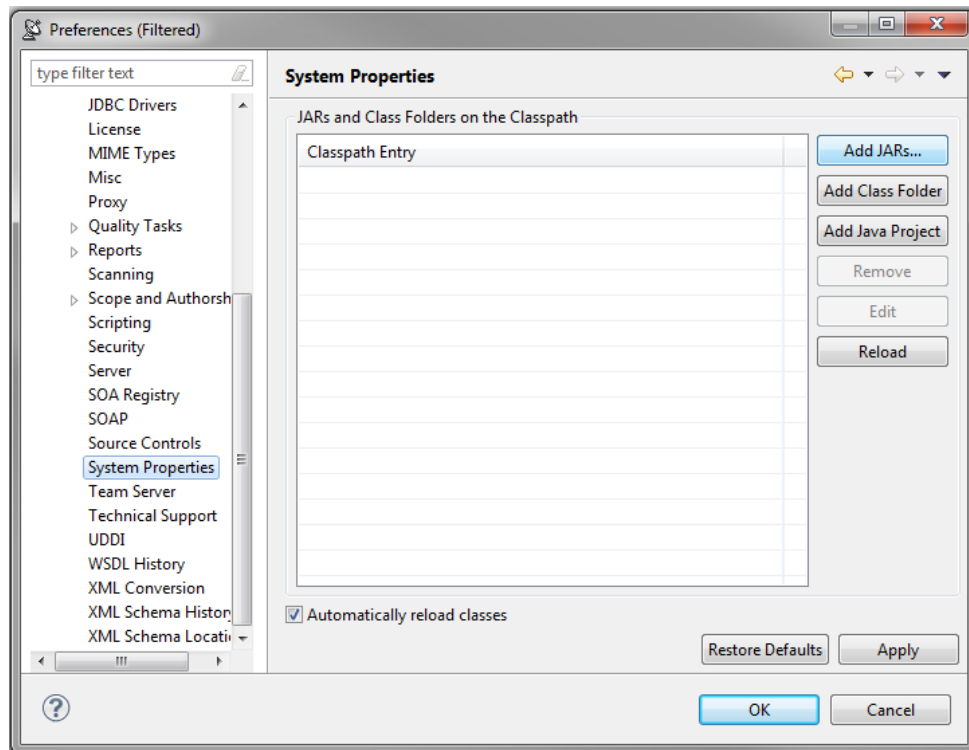
The tool can be installed from the UI or command line.

UI Installation

1. Choose **Parasoft > Preferences**.



2. In the System Properties preferences page, click **Add JARs**.



3. In the file chooser that opens, select **sftpclient.jar**.
4. Restart SOAtest/Virtualize.

Command Line Installation

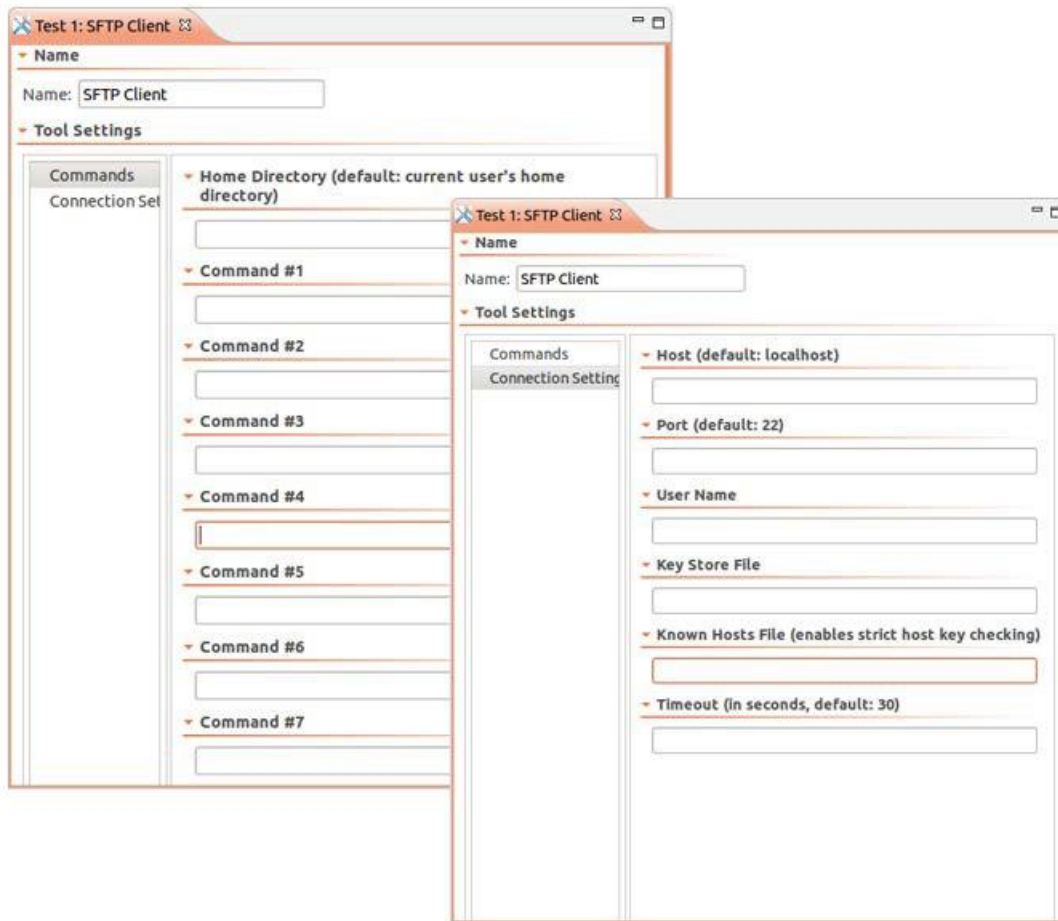
Add the **sftpclient.jar** file to the **system.properties.classpath** property in your localsettings properties file. For example:

```
system.properties.classpath=<path to jar>/sftpclient.jar
```

Usage

SFTP Client tools can be added as standalone tools via the Add Test wizard, or chained to the output of another tool via the Add Output wizard.

Configuration options cover commands and connection settings.



Commands Configuration Options

Option	Description
Home Directory	Defines the user's local home directory. This directory is <i>not</i> the same as the user's remote home directory, which is configured on the server side. If empty, the system's current user's home directory will be used.
Command #1 - #10	Specifies the series of SFTP commands to be performed during the SFTP session. The commands will be executed in the order in which they are listed here. They should be typed exactly as if they were being performed in an interactive SFTP console. At least one of these fields must be defined.

Connection Settings Configuration Options

Option	Description
Host	Defines the hostname or IP address for connecting to the server. If empty, the default value (localhost) will be used.
Port	Defines the port for connecting to the server. If empty, the default value (22) will be used.
User Name	Defines the username for connecting to the server. If empty, the tool will remain disabled.
Key Store File	Defines the absolute path to the user's private key file, which should be in PEM format. If empty, the tool will remain disabled.
Known Hosts File	Defines the absolute path to a known hosts file, which should be formatted as a standard OpenSSH known hosts file. If a known hosts file is defined, then strict host key checking will be enabled. If the host key is not found in the known hosts file, the connection to the server will be closed. If empty, strict host key checking will remain disabled.
Timeout	Defines how many seconds to wait to connect to the SSH server (as well as the underlying SFTP channel) before timing out and closing all connections. If empty, the default value (30 seconds) will be used.

Third-Party Content

This plug-in includes items that have been sourced from third parties as outlined below.

- JCraft ([JCraft License](#))

Additional license details are available in this plugin's licenses folder.