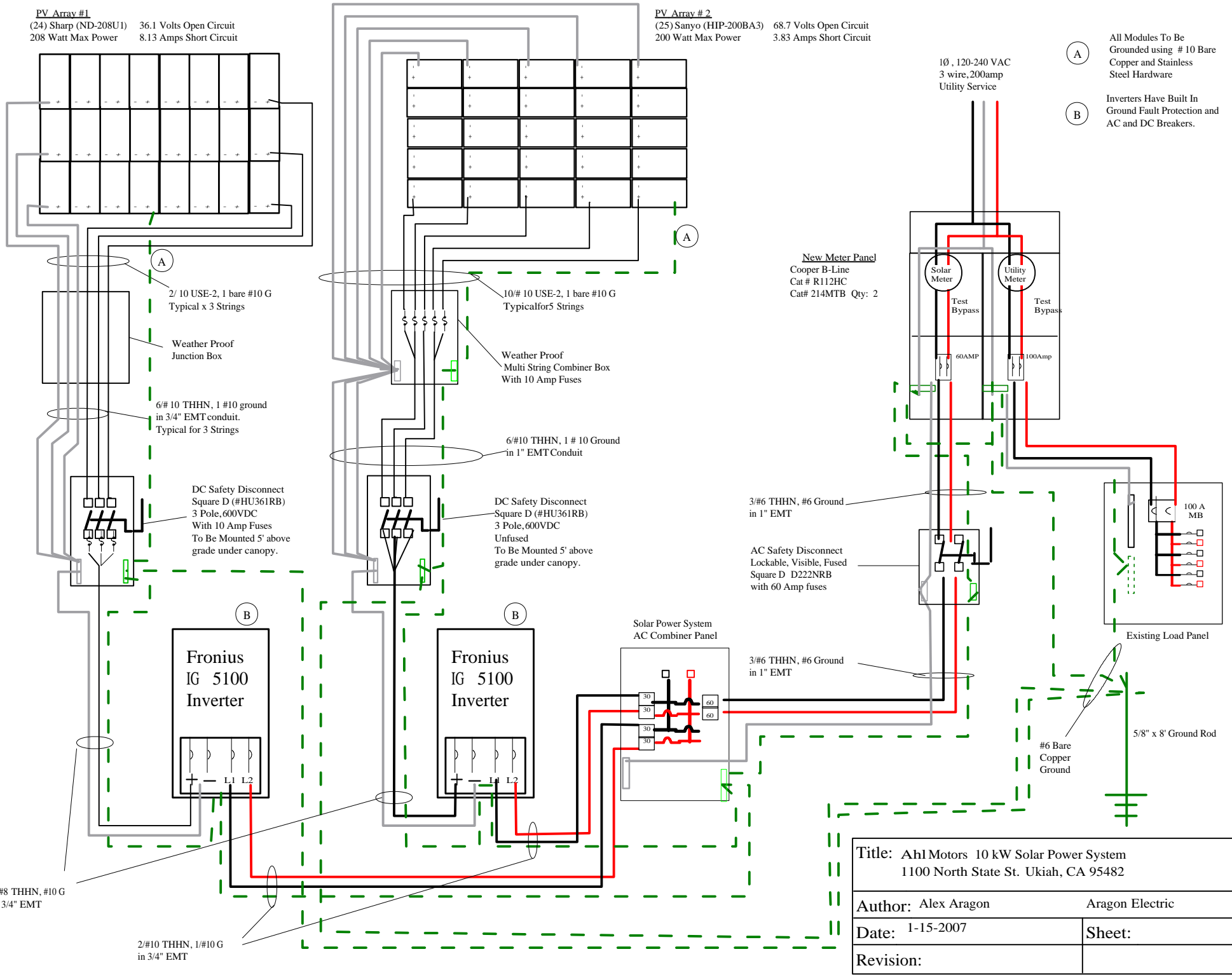


**PV Array #1**  
 (24) Sharp (ND-208U1) 36.1 Volts Open Circuit  
 208 Watt Max Power 8.13 Amps Short Circuit

**PV Array #2**  
 (25) Sanyo (HIP-200BA3) 68.7 Volts Open Circuit  
 200 Watt Max Power 3.83 Amps Short Circuit

- (A) All Modules To Be Grounded using # 10 Bare Copper and Stainless Steel Hardware
- (B) Inverters Have Built In Ground Fault Protection and AC and DC Breakers.



2/ 10 USE-2, 1 bare #10 G  
 Typical x 3 Strings

Weather Proof  
 Junction Box

6/ # 10 THHN, 1 #10 ground  
 in 3/4" EMT conduit.  
 Typical for 3 Strings

DC Safety Disconnect  
 Square D (#HU361RB)  
 3 Pole, 600VDC  
 With 10 Amp Fuses  
 To Be Mounted 5' above  
 grade under canopy.

**Fronius IG 5100  
 Inverter**

2/ #8 THHN, #10 G  
 in 3/4" EMT

2/ #10 THHN, 1/ #10 G  
 in 3/4" EMT

10/ # 10 USE-2, 1 bare #10 G  
 Typical for 5 Strings

Weather Proof  
 Multi String Combiner Box  
 With 10 Amp Fuses

6/ #10 THHN, 1 # 10 Ground  
 in 1" EMT Conduit

DC Safety Disconnect  
 Square D (#HU361RB)  
 3 Pole, 600VDC  
 Unfused  
 To Be Mounted 5' above  
 grade under canopy.

**Fronius IG 5100  
 Inverter**

Solar Power System  
 AC Combiner Panel

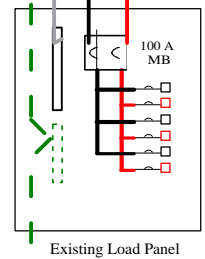
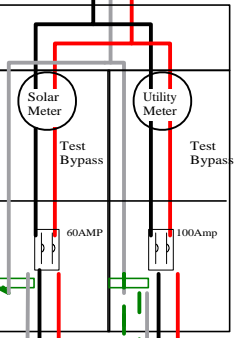
3/ #6 THHN, #6 Ground  
 in 1" EMT

AC Safety Disconnect  
 Lockable, Visible, Fused  
 Square D D222NRB  
 with 60 Amp fuses

3/ #6 THHN, #6 Ground  
 in 1" EMT

**New Meter Panel**  
 Cooper B-Line  
 Cat # R112HC  
 Cat# 214MTB Qty: 2

1Ø , 120-240 VAC  
 3 wire, 200amp  
 Utility Service



5/8" x 8' Ground Rod

#6 Bare  
 Copper  
 Ground

Title: Ah1 Motors 10 kW Solar Power System 1100 North State St. Ukiah, CA 95482	
Author: Alex Aragon	Aragon Electric
Date: 1-15-2007	Sheet:
Revision:	