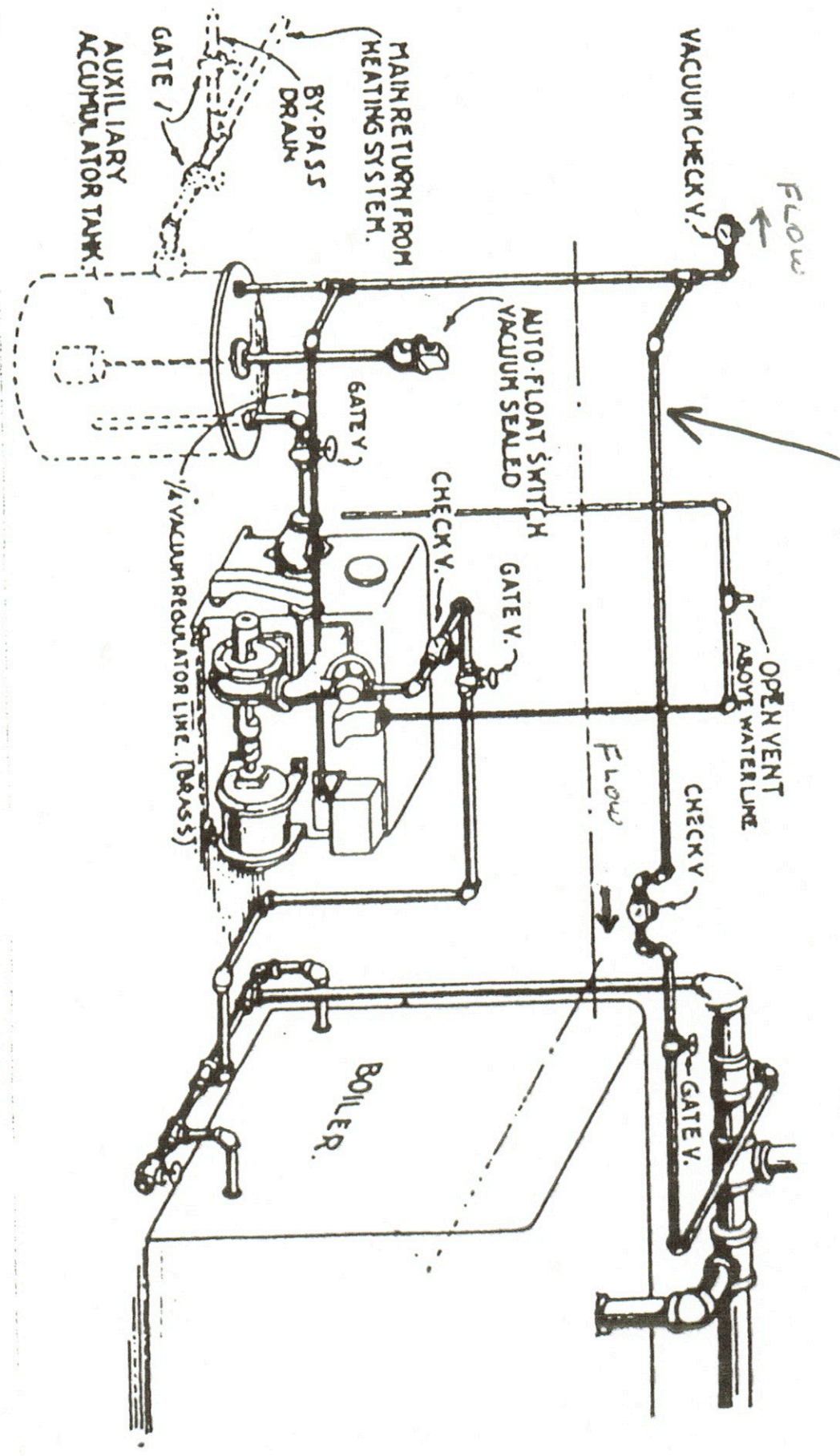


EQUALIZER LINE

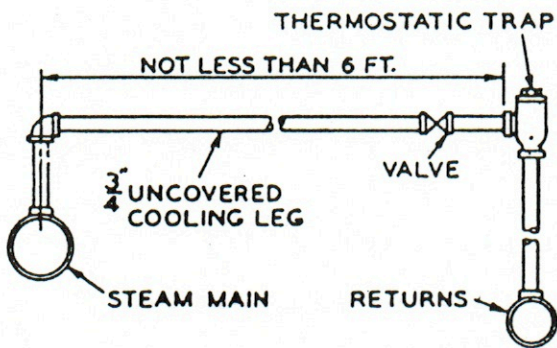


EQUALIZER LINE

IF STEAM STOPS FLOWING IN A PROPERLY TIGHT SYSTEM, A VACUUM IS CREATED ON THE SUPPLY SIDE. THIS MAY BE HIGHER THAN THE RETURN LINE VACUUM AND CONDENSATE CANNOT FLOW BACK TO THE PUMP. TO PREVENT THIS, INSTALL THE THERMOSTATIC TRAP WITH COOLING LEG. THEN WITH NO STEAM FLOWING, THE TRAP OPENS TO EQUALIZE THE VACUUM.

STANDARD EQUALIZER LINE

RECOMMENDED VACUUM RETURN LINE EQUALIZER FOR ALL STANDARD INSTALLATIONS.



ZONE EQUALIZER LINE

RECOMMENDED VACUUM RETURN LINE EQUALIZER FOR EACH ZONED SECTION.

