

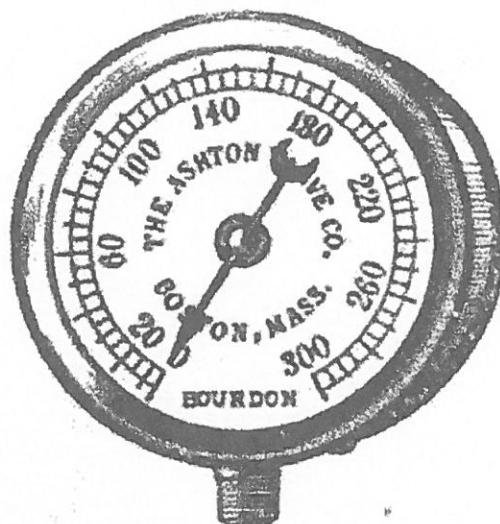
ASHTON Steam Vehicle Fittings

HIGHEST GRADE AND GUARANTEED SATISFACTORY.

For Boiler Pressures up to
250 lbs. per Square Inch.

**Pop Safety Valves, Cylinder Relief
Valves.**

The
Best
Are
The
Cheapest
In
The
End.



Specify
And
Use
The
Ashton
Reliable
Fittings.

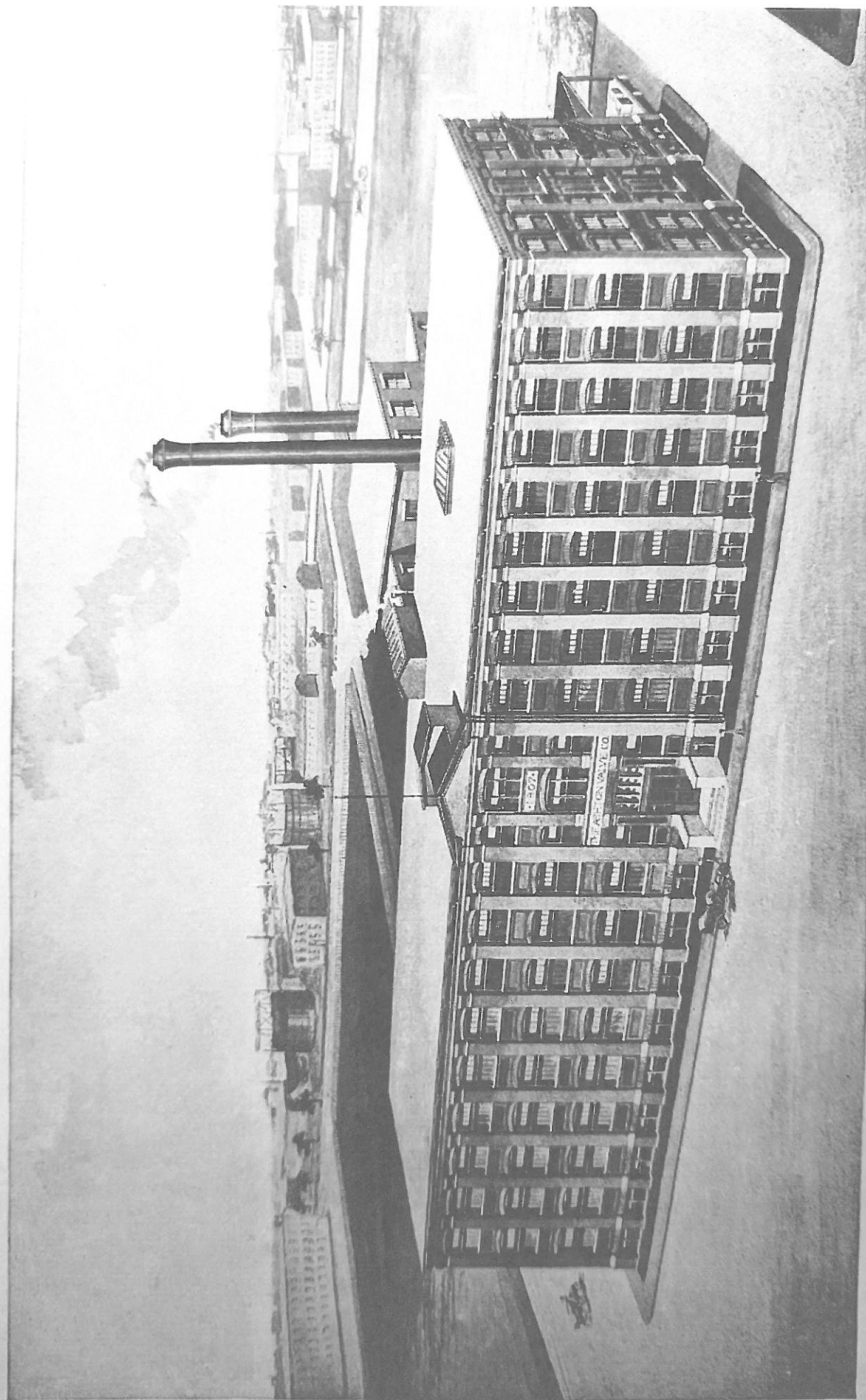
**Steam and Air Pressure Gauges, Automatic Water
Gauges, Gauge Cocks, Etc.**

WRITE FOR CATALOGUE "R."

THE ASHTON VALVE CO.

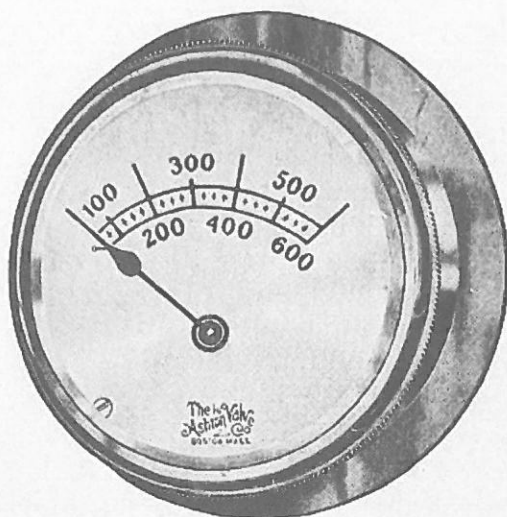
271 Franklin Street, BOSTON, MASS.

BRANCHES: NEW YORK. • CHICAGO. LONDON.

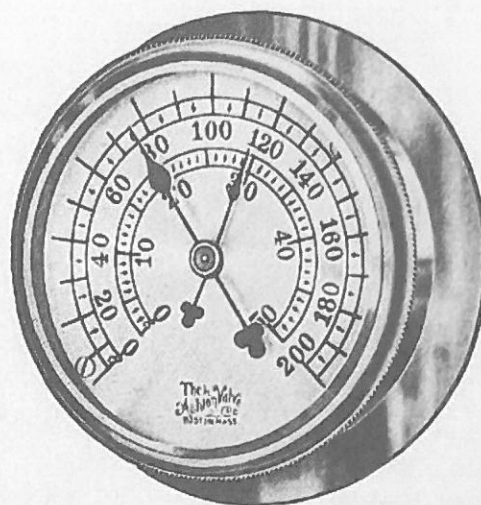


Main Office and Works, 161-179 First Street, Cambridge, Mass.

Ashton Single and Duplex Automobile Gages



No. 67



No. 67 A.

The two styles of gages above shown are particularly adapted for automobile service, where an attractive small size gage is desired having a back flange and back pipe connection. These gages can be fastened by screws on the front of the dashboard, or be inserted from behind through proper size holes, so that only the ring, glass, and dial are visible.

Either style gage can be furnished to any required high or low maximum graduation other than above illustrated. The duplex gage is made with two entirely separate movements and pipe connections, and is the same as two independent gages combined in one case. Cocks are not furnished with these gages.

LIST PRICES

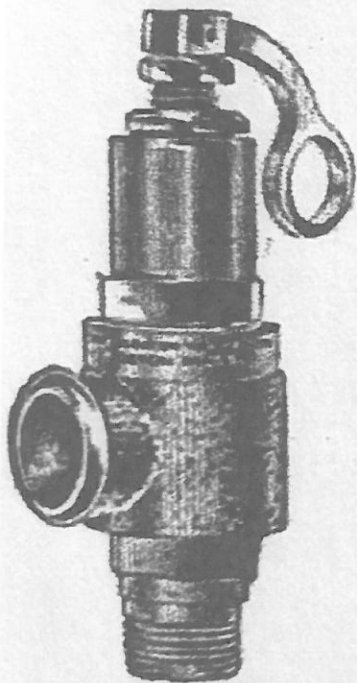
Size		Brass Case	Nickel-Plated Case
No. 67	Style 600 pounds, 3 inch Dial	\$12.00	\$12.50
No. 67A	Style Duplex, 3 inch Dial	16.00	16.50

ASHTON

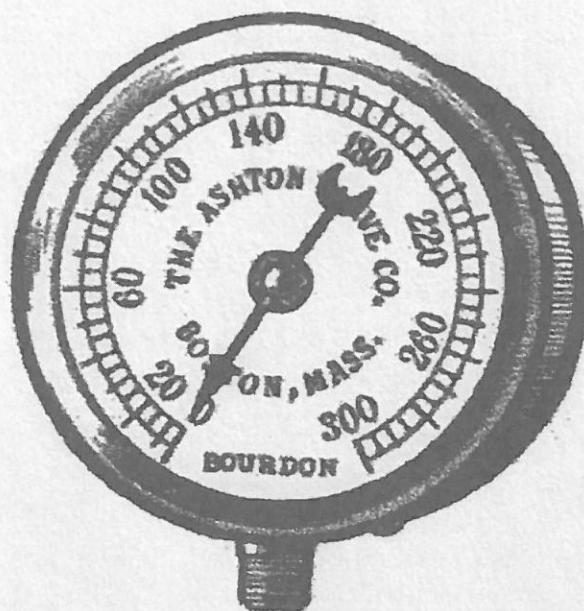
..HIGH GRADE..

Steam Vehicle Fittings

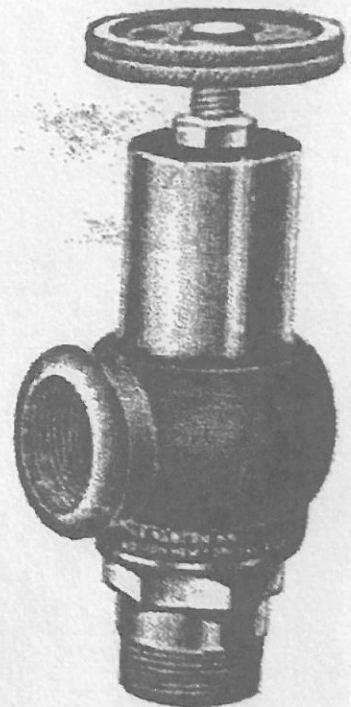
Pop Safety Valves, Cylinder Relief Valves, Steam and Oil Gauges, Water Gauges, Gauge Cocks, Pet Cocks.



Pop Safety Valve.



Awarded Three Medals
at
Paris Exposition, 1900.



Cyl. Relief Valve.

Catalogue and Prices on Application.

THE ASHTON VALVE CO.

BOSTON.

NEW YORK.

CHICAGO.

LONDON.

Ashton Pop Safety Valves

For Very Small Boilers and Pressure Tanks



No. 31



No. 32

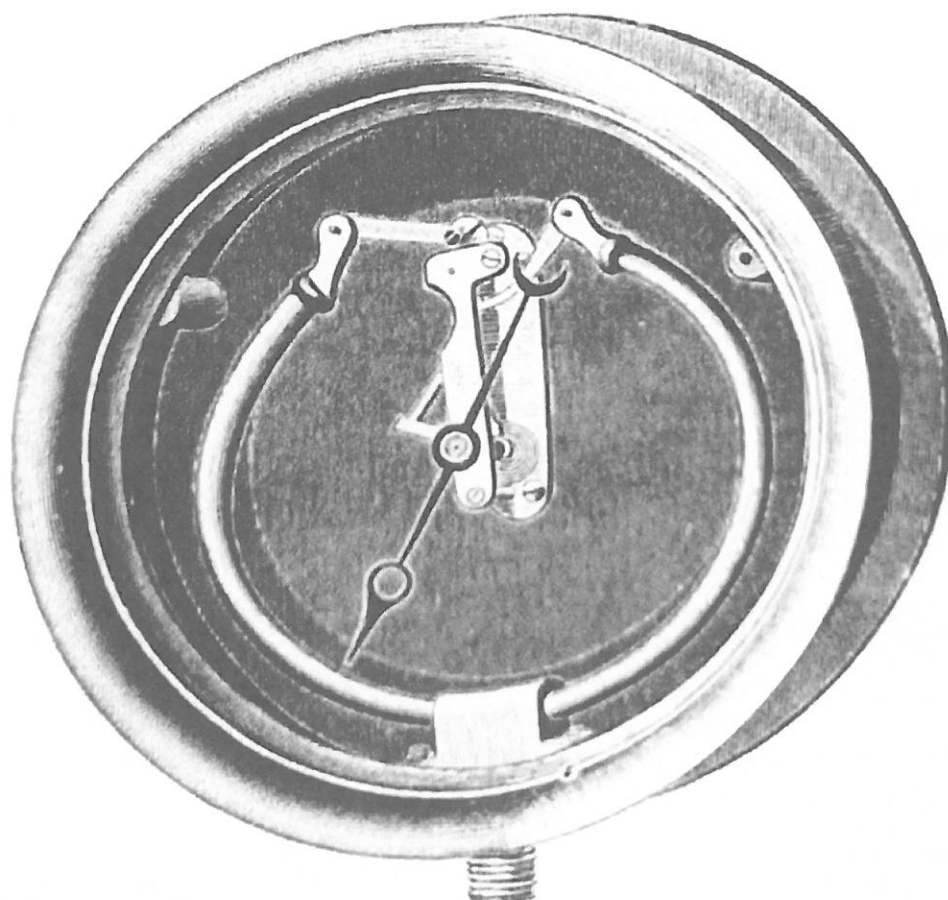
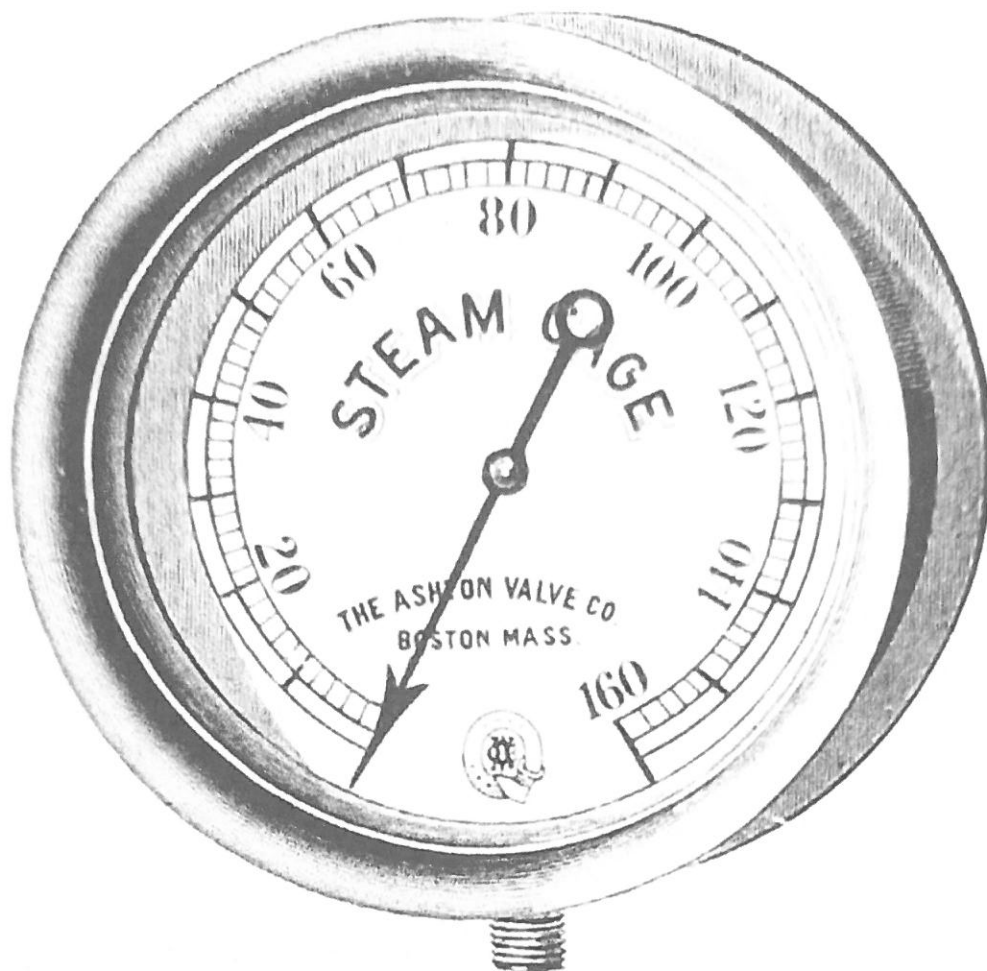
These valves are very compact, but solidly built for either low or high pressures. They have encased spring made of special steel, knife-edge pop lip, beveled seats, and a lever for raising the valve off its seat.

Every valve is carefully tested and set to blow at the desired pressure. They will not cause trouble by leaking.

No. 31 has open discharge outlet, while No. 32 has pipe outlet.

LIST PRICES

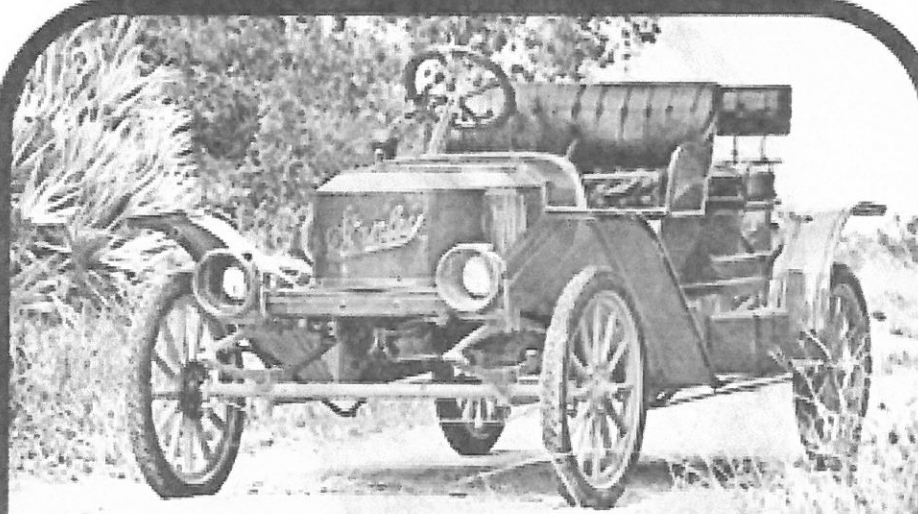
Size Valve	$\frac{1}{8}$ in.	$\frac{1}{4}$ in.	$\frac{3}{8}$ in.	$\frac{1}{2}$ in.	$\frac{3}{4}$ in.
No. 31 Valve	\$7.50	\$8.75	\$10.00	\$11.25	\$12.50
No. 32 Valve	8.00	9.25	10.50	11.75	13.00
Weight in ounces	8	8	13	14	30



GREAT CARS of the WORLD

THE STANLEY STEAMER 1899

NO.
102



Invented by the twin Stanley brothers, F. E. and F. O., inventors as well of a home gas generator, x-ray equipment and the Stanley Dry Plate for photography, later sold to Eastman Kodak for a fabulous sum. Despite a fearsome pressure of 600 pounds per square inch, and contrary to oft-expressed fears concerning these well-remembered little cars, no Stanley Steamer boiler has ever exploded.

"Pee Wee's" **HIP-POCKET LIBRARY**

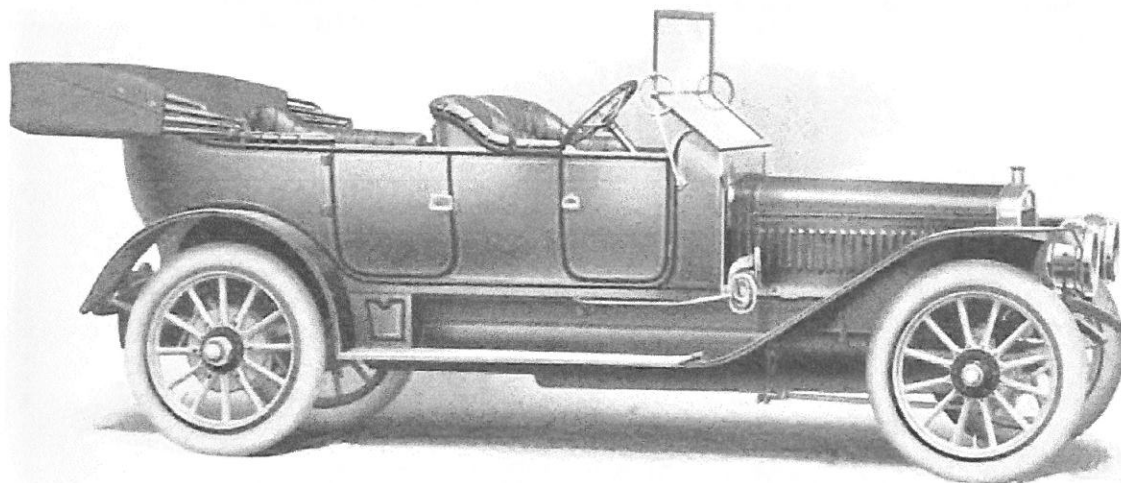
A framable 8½" x 11" portrait of the Sports Star shown, and a free listing of other teams available in Charles Linnett "PeeWees™", may be ordered by sending 60¢ (plus 35¢ P. & H. per order) to:

LINETT PRODUCTS, INC.

5011 W. PARK, SUITE 101, L.

WALTON, MA. 02091

You Take No Risk When You Buy *This* Car



WINTON SIX

☐ This self-cranking 1912 Winton Six is not a new type, not a new idea, not an experimental car.

☐ It is the same 48 H. P. car we have been making since June, 1907.

☐ The same six-cylinder car that proved itself so completely superior to all other types that it has converted many makers from four to six cylinders.

☐ For 1912 this car is a little bit longer in wheel base, has a more spacious body, and carries **electric lights** instead of oil lamps.

☐ It is better than before because we have now added another year to our long experience in making sixes exclusively.

☐ And, as usual, we are giving our buyers the benefit.

☐ For the price has not been increased. It remains at \$3000. And if you want to know how wonderful it is in value, just compare it with cars that are offered at \$5000 to \$6000.

SEND FOR CATALOG

THE WINTON MOTOR CAR. CO.
CLEVELAND
SIXTH CITY

Winton Branch Houses

NEW YORK . . .	Broadway at 70th St.	CLEVELAND . . .	1228 Huron Road
CHICAGO . . .	Michigan Avenue at 18th St.	DETROIT . . .	998 Woodward Ave.
BOSTON . . .	674 Commonwealth Ave.	KANSAS CITY . . .	3328-3330 Main St.
PHILADELPHIA . . .	246-248 No. Broad St.	MINNEAPOLIS . . .	16-22 Eighth St. N.
BALTIMORE . . .	Mt. Royal at North Ave.	SAN FRANCISCO . . .	200 Van Ness Ave.
PITTSBURGH . . .	Baum at Beatty St.	SEATTLE . . .	1000-1006 Pike St.

THE WINTON MOTOR CAR. CO.
Berea Road, Cleveland, Ohio.

Please send Winton Six literature to

.....

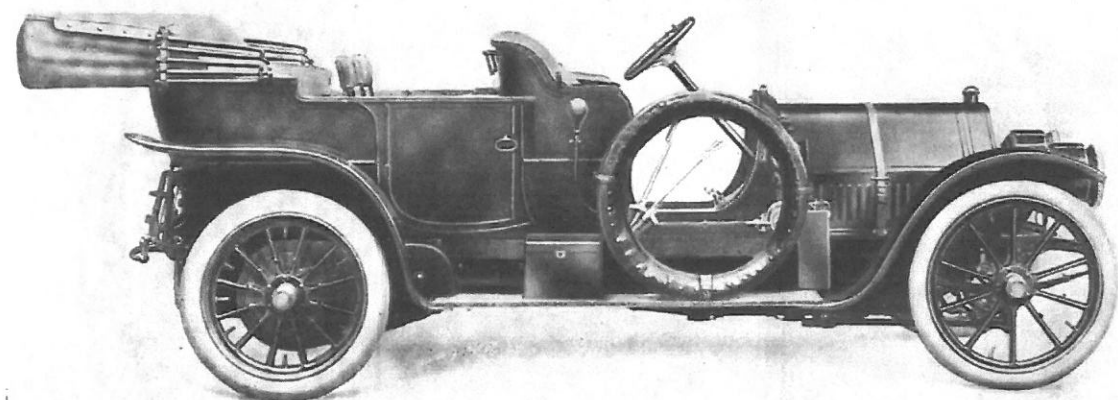
.....

.....

.....

Pope-Toledo

1908



Characterized by extreme elegance of appointments,
simplicity of design, and superb finish.

Quiet, Comfortable and Very Speedy

Shrewd, long-headed dealers have been strongly im-
pressed with the wonderful showing made by the Pope-
Toledo at New York and Chicago Shows.

Live dealers in unoccupied territory are invited to
correspond with us.

Pope Motor Car Company

TOLEDO, OHIO

Members A. L. A. M.

THE NEW YORK
PUBLIC LIBRARY
ASTOR LENOX TILDEN FOUNDATION

...THE... Horseless Age

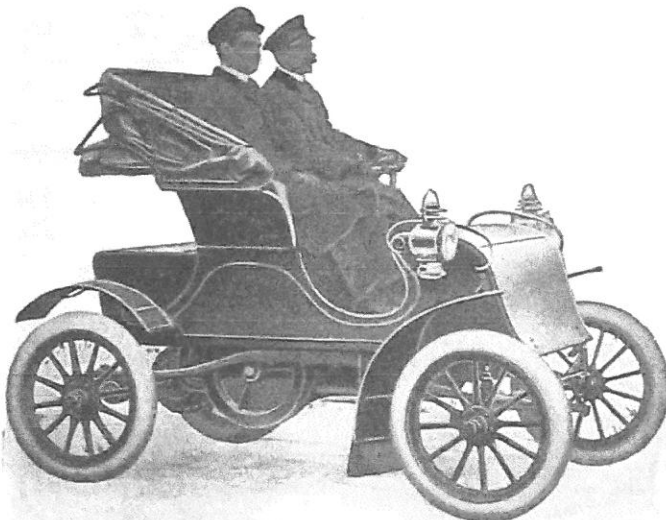
VOLUME 11.

JANUARY 7, 1903.

NUMBER 1.

WATERLESS KNOX.

THE IDEAL DOCTOR'S CARRIAGE.



(TESTIMONIAL.)

Boston, Mass., August 27, 1902.

AUTOMOBILE HEADQUARTERS, Boston, Mass.:

DEAR SIRS—The Knoxmobile which I purchased of you about three months ago has given perfect service, and I am entirely satisfied with it. I consider it the ideal carriage for a physician. The absence of water and its attendant troubles remove about half the amount of care necessary to keep it in good running order. I have not had any trouble of any kind with it, although I have run it about 1,000 miles since June. I have not even cleaned the spark plug once in that time. There is no overheating of the engine, in fact, the engine is so cool that I usually open the throttle and allow the engine to take in a charge by its momentum after removing the circuit making plug, and so am able to start the engine next time by simply pulling the crank one-quarter of a turn. The ease and quickness of the control make it a pleasure to run the carriage. I consider the Knox far ahead of any carriage on the market at the present time for the use to which a physician would put it in his professional work. It is always ready at an instant's notice and I have found it thoroughly reliable.

Yours truly,

GEO. T. CUSHMAN, M. D.

One-quarter of our 1902 output was sold to Doctors.

SEND FOR CATALOG AND TESTIMONIALS.

KNOX AUTOMOBILE CO., Springfield, Mass.

NEW YORK: 152 West 38th Street.

February 1,
146 West 39th Street.



WESTERN AGENCY:

National Automobile and Mfrs. Company.
26 Fremont St., SAN FRANCISCO, CAL.

COPYRIGHT, 1903, BY E. P. INGERSOLL.

Doctors' Number.

Digitized by Google

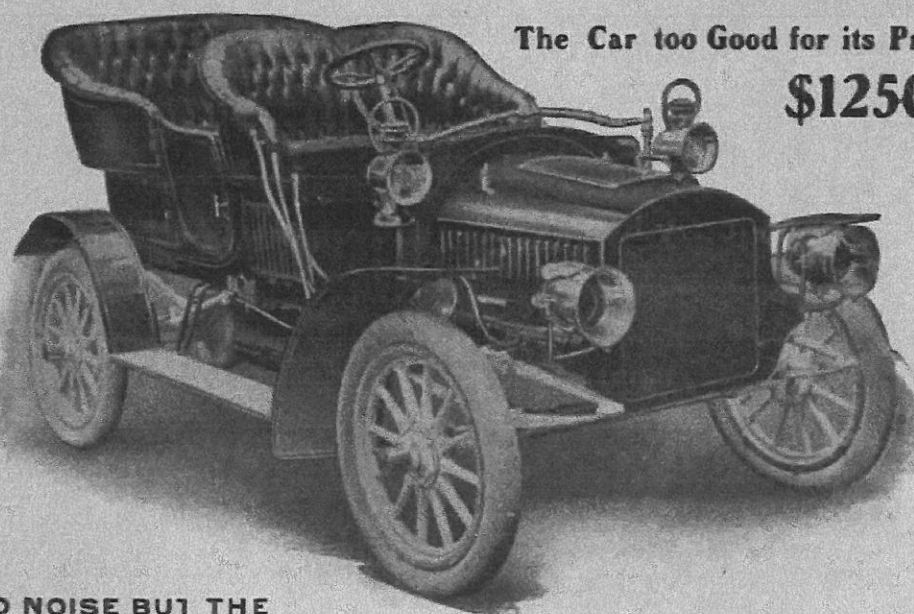
7L
1
Vol. X, No. 4 A94

PHILADELPHIA AND NEW YORK

Price, 15c
OCTOBER 1, 1905

CYCLE AND AUTOMOBILE TRADE JOURNAL

Reliance DETROIT



The Car too Good for its Price

\$1250

**NO NOISE BUT THE
HORN**

The "RELIANCE" is rightly named. It is a car in which you can place Reliance, 22 H. P. and lots to spare. Send for catalog giving full details

RELIANCE MOTOR CAR COMPANY

SALES OFFICE, 23 FORT STREET, DETROIT, MICH.

FACTORY, DETROIT, MICH., U.S.A.

Members of the American Motor Car Manufacturers Association.

NEW YORK AGENTS—NEW YORK MOTOR CAR CO., 141 WEST 39TH ST., NEW YORK CITY

AUTOMOBILE

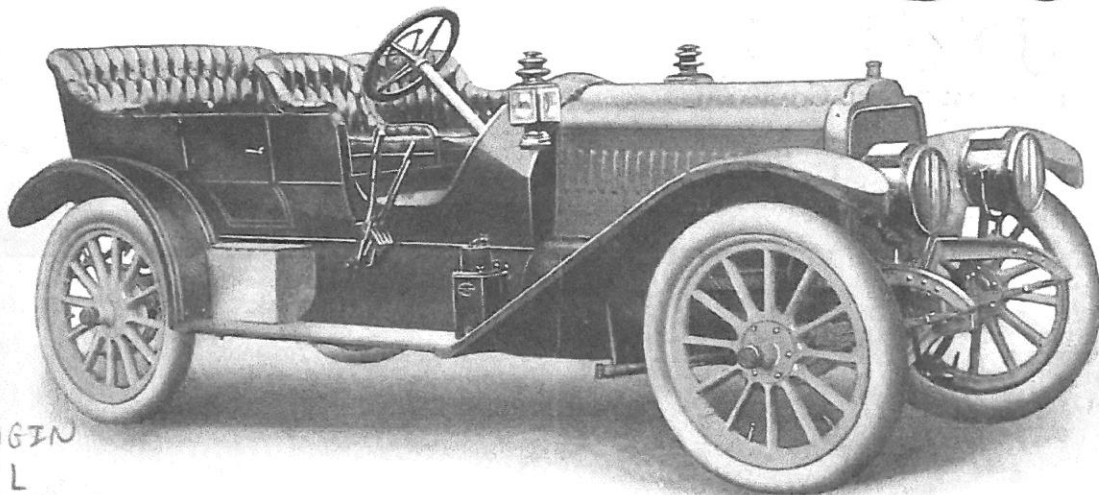
Vol. XXI.

JULY 1, 1909

No. 1.

TRANSPORTATION LIBRARY

Standard Six



ENGINE
TL
1
A96

50 H. P. { TOURING CAR
TOURABOUT
or RUNABOUT } \$3,000
FULLY EQUIPPED

A "Standard of Excellence" is found in the *Standard Six*. Nothing except the best enters into its construction. On the road it has demonstrated wonderful power, both in speed and in hill-climbing. In ease of control it is a marvel, and its graceful lines will command your admiration. The *Standard Six* is a GOOD CAR at a FAIR PRICE.

MOTOR—Six Cylinders 4½ x 5, with valves in head, 50 H.P. on brake test. CLUTCH—Multiple Disc type contained in fly-wheel. TRANSMISSION—Selective type; three speeds, forward and reverse. DRIVE—Direct by shaft to rear axle. AXLES—Rear, floating type, Chrome Nickel Steel. Front, Drop-forged Vanadium Steel. IGNITION—Dual system Remy Magneto and Battery.

CARBURETOR—Standard Schebler. LUBRICATION—By Geared Pump and Splash. FRAME—Chrome Nickel Pressed Steel. BODY—Aluminum, luxuriously upholstered. TIRES—36 x 4, Diamond or Goodrich. Speed on high, 3 to 65 miles per hour. Equipment includes Dietz oil and gas lamps, generator, Warner speedometer and clock, high-grade top and wind shield, horn, tire irons and full set tools.

Send for complete specifications. Agents wanted in territory not already allotted.

CHICAGO:

1326 Michigan Ave.

ST. LOUIS CAR CO., AUTO DEPT.

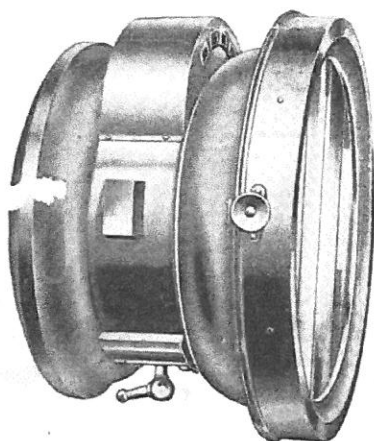
ST. LOUIS, MO., U. S. A.

THE AUTOMOBILE

WEEKLY

NEW YORK, THURSDAY, JANUARY 7, 1909—CHICAGO

10 CENTS



Style No. 98

THE HIGH STANDARD IN LAMPS

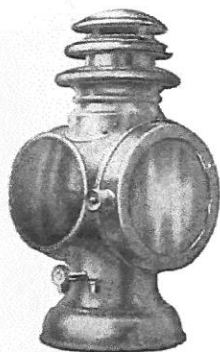
Maintained for years
by



Style No. 838

GRAY & DAVIS

seems fully appreciated by the best class of
automobile manufacturers of two continents,
hibiting at the Palace, as is attested by their
use on the following cars:



Style No. 917

Foreign
Lancia
Isotta
C. G. V.
Del A Haye

American
Welch
Premier
Mora
Jackson
Speedwell

Foreign
Renault
Hotchkiss
De Dion



Style No. 934

GRAY & DAVIS

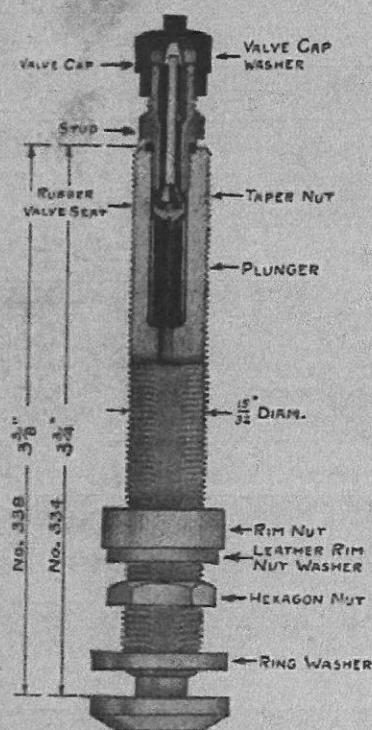
NEW YORK CITY
377 West Broadway

Main Office and Factory
AMESBURY, MASS.

BOSTON, MASS.
749 Boylston Street

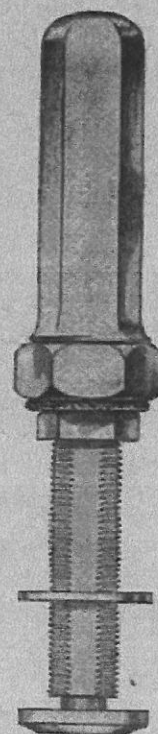
CHILTON AUTOMOBILE DIRECTORY

BURKE TIRE VALVES



Proven serviceability is the manufacturer's safest equipment guide. BURKE VALVES are standard—a fact that offers sufficient proof of mechanical correctness and all-round satisfaction.

Tire users, tire makers and automobile manufacturers recognize alike that this is the one dependable valve that makes inflation both quick and easy.



THE BURKE VALVE CO.

5213 Windsor Avenue, Cleveland, Ohio