

AND LIQUIDS IN THE VICINITY OF THIS OR ANY OTHER

testo

310

Icons:  $\Delta P$

---

Icons:

---

T  
392.3 °F

---

CO<sub>2</sub>  
9.15%

---

Stop

Three orange function buttons

Print icon, Up arrow, esc

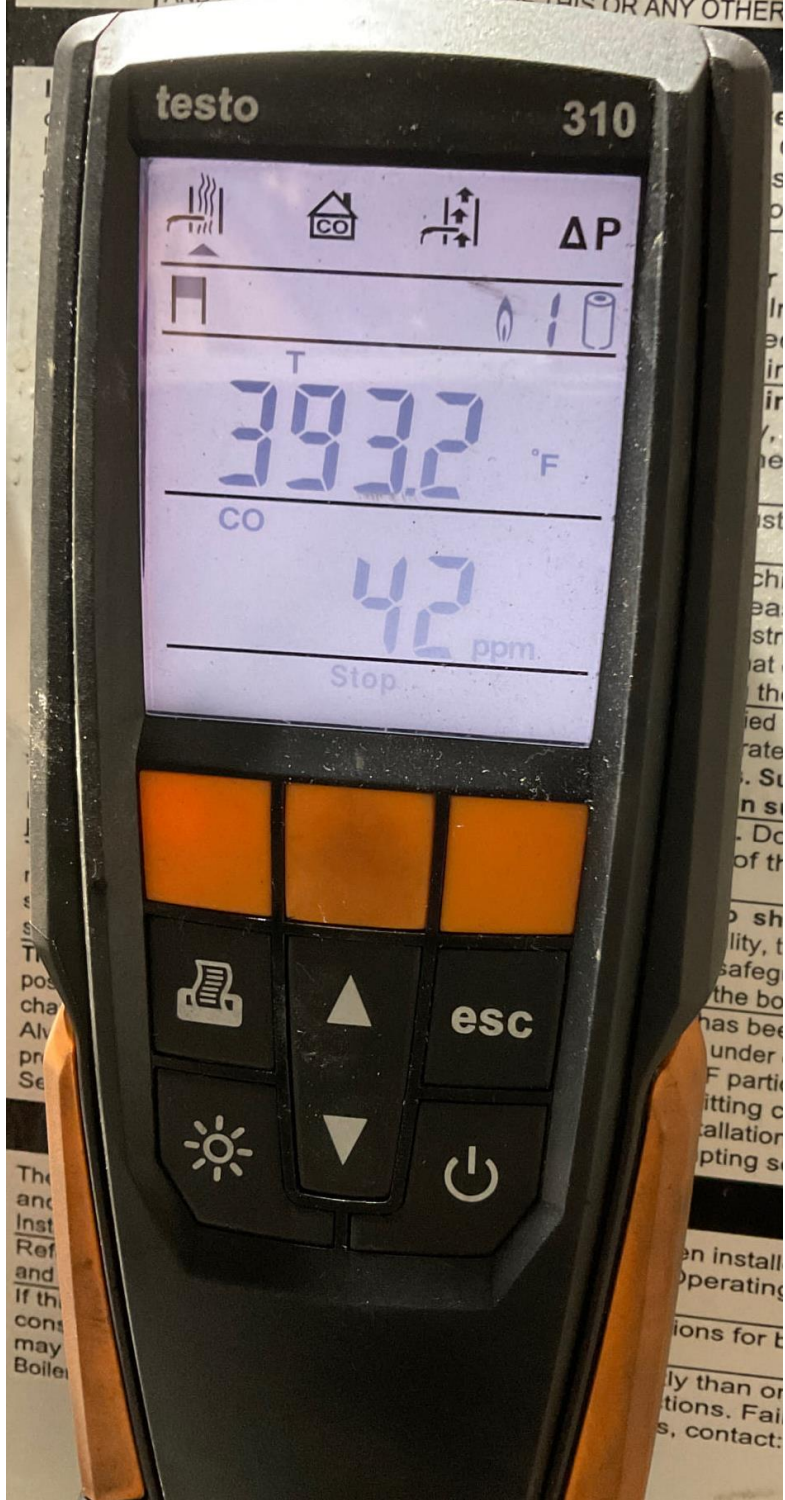
Sun icon, Down arrow, Power icon

pr  
ch  
Al  
pr  
S

Tr  
an  
Ins  
Re  
anc  
If th  
con

Y  
n  
c  
e  
os  
na  
g t  
ier  
rat  
s. S  
en s  
. D  
of  
o s  
ility,  
safe  
the b  
has be  
unde  
F part  
fitting  
tallatio  
mpting s  
en insta  
Operati  
ions for

DO NOT STORE OR USE GASOLINE OR OTHER FLAMMABLE LIQUIDS IN THE VICINITY OF THIS OR ANY OTHER



testo

310

Icons: Furnace, CO, Pressure Differential, ΔP

Icons: House, Battery Level

T  
393.2 °F

CO  
42 ppm

Stop

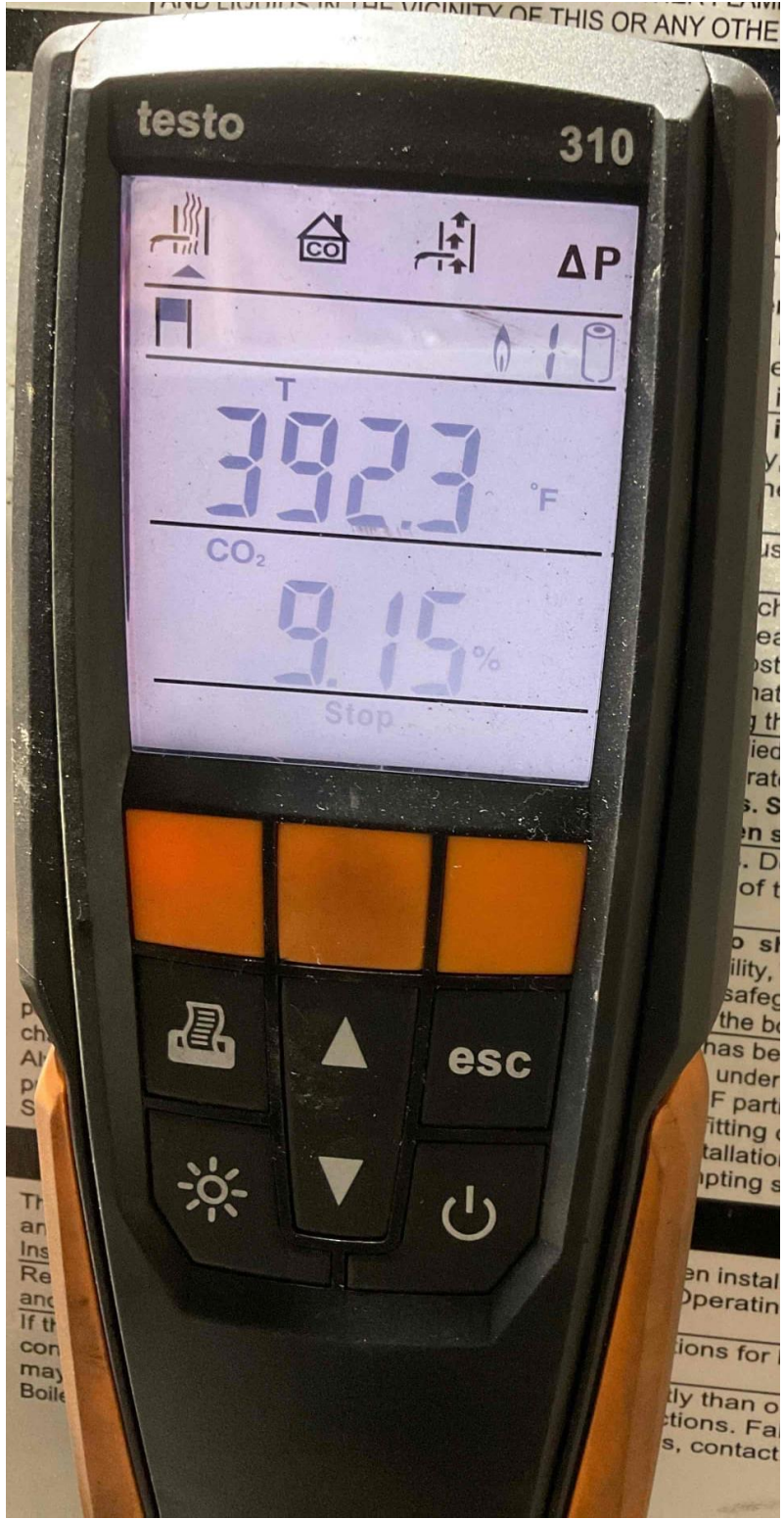


esc



The  
and  
Inst  
Ref  
and  
If th  
cons  
may  
Boiler

en install  
operating  
ions for t  
ly than or  
tions. Fai  
s, contact:



testo

310

Icons: Furnace, CO, ΔP, Battery level, Battery icon

T  
392.3 °F

CO<sub>2</sub>  
9.15%

Stop



esc



RESIDENTIAL HEATING BOILERS  
NEW YORKER BOILER COMPANY, INC.

# FOR YOUR SAFETY

DO NOT STORE OR USE GASOLINE OR OTHER FLAMMABLE VAPORS  
OR ANY OTHER APPLIANCE.



ve is installed into 3/4"  
n, Operating and Service  
r shut-off valves in relief  
oor.

e or maintenance can  
er to the FR Installation  
r. Installation and service  
fied personnel. Do not  
r inoperative controls.  
g injury. If this boiler is  
ly, a flow regulator and  
heater piping. See FR

must be installed so there

chimney flue must be  
season and should be  
bstructions. A clean and  
that could cause injury or  
g the boiler's efficiency.  
plied floor shield. Concrete  
erate on masonry floors,  
s. **Support entire boiler**  
**en subjected to water.**  
s. Do not unscrew any  
s of this boiler without

to shut down and not  
bility, the heating system  
safeguards and alarms  
if the boiler is inoperative.  
has been classified as a  
, under certain conditions  
CF particulates and dust.  
fitting clothing and eye  
stallation, Operating and  
mpting service or repair.

en installed, maintained  
Operating and Service

tions for boiler, burner,

**SAFETY**  
DO NOT STORE OR USE GASOLINE OR OTHER FLAMMABLE VAPORS  
AND LIQUIDS IN THE VICINITY OF THIS OR ANY OTHER APPLIANCE.

Ins  
co  
Ins  
pip  
im  
ca  
Op  
m  
of  
Hi  
ed  
au  
In  
TI  
ar  
TI  
in  
ins  
un  
lo  
De  
ov  
wh  
ba  
Th  
pi  
po  
Th  
res  
sh  
sh  
Th  
pos  
chan  
Alw  
prot  
Ser

The  
and  
Instr  
Refer  
and n  
If this  
conu  
may v  
Boiler

is installed into  
operating and Ser  
out-off valves in r

or maintenance  
to the FR Installat  
stallation and serv  
personnel. Do r  
operative contro  
jury. If this boiler  
a flow regulator an  
water piping. See FI

be installed so there

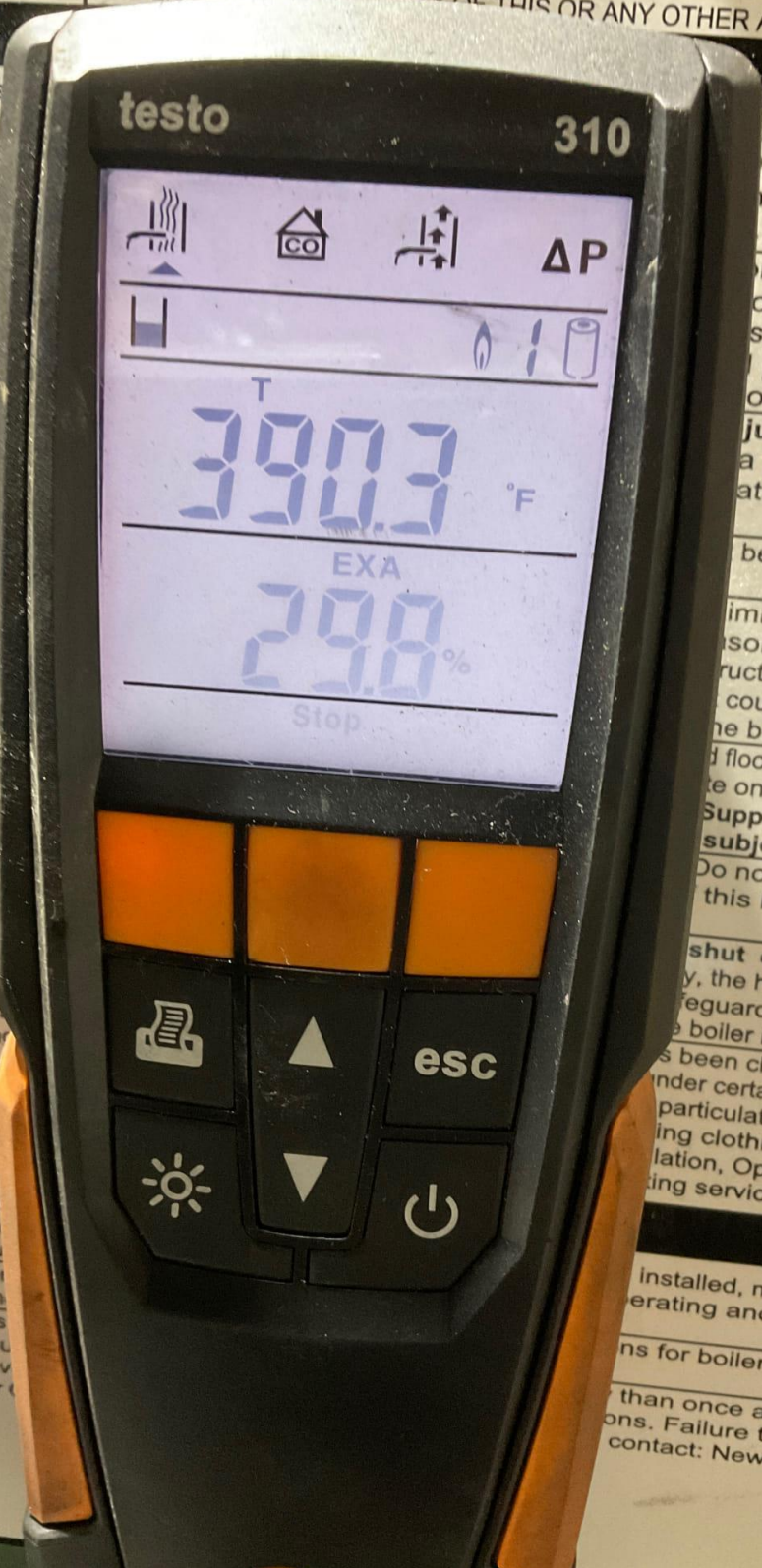
imney flue must be  
son and should be  
ructions. A clean and  
could cause injury or  
the boiler's efficiency.  
d floor shield. Concrete  
te on masonry floors,  
**Support entire boiler  
subjected to water.**  
Do not unscrew any  
this boiler without

shut down and not  
y, the heating system  
regards and alarms  
the boiler is inoperative.  
s been classified as a  
nder certain conditions  
particulates and dust.  
ing clothing and eye  
lation, Operating and  
ing service or repair.

installed, maintained  
erating and Service

ns for boiler, burner,

than once a month,  
ons. Failure to do so  
contact: New Yorker



**FOR YOUR SAFETY**  
DO NOT STORE OR USE GASOLINE OR OTHER FLAMMABLE VAPORS  
AND LIQUIDS IN THE VICINITY OF THIS OR ANY OTHER APPLIANCE.

testo 310

Icons: Burner, House with CO, Chimney, ΔP, Fan, Flame, Battery

T  
393.2 °F

CO  
42 ppm

Stop

Buttons: Print, Up Arrow, Esc, Down Arrow, Power

is installed into 3/4" Operating and Service shut-off valves in relief or.

or maintenance can to the FR Installation Installation and service ed personnel. Do not inoperative controls. injury. If this boiler is y, a flow regulator and heater piping. See FR

st be installed so there chimney flue must be eason and should be structions. A clean and at could cause injury or the boiler's efficiency. ed floor shield. Concrete rate on masonry floors, . Support entire boiler n subjected to water. . Do not unscrew any of this boiler without

o shut down and not ility, the heating system safeguards and alarms the boiler is inoperative. has been classified as a under certain conditions F particulates and dust. itting clothing and eye allation, Operating and pting service or repair.

en installed, maintained Operating and Service ions for boiler, burner, ly than once a month, tions. Failure to do so s, contact: New Yorker

The and Inst Ref and if the cons may Boiler

RESIDENTIAL HEATING BOILERS  
NEW YORKER BOILER COMPANY, INC.

## FOR YOUR SAFETY

DO NOT STORE OR USE GASOLINE OR OTHER FLAMMABLE VAPORS  
OR ANY OTHER APPLIANCE.



ve is installed into 3/4"  
n, Operating and Service  
r shut-off valves in relief  
oor.

or maintenance can  
er to the FR Installation  
r. Installation and service  
fied personnel. Do not  
r inoperative controls.  
g injury. If this boiler is  
ly, a flow regulator and  
heater piping. See FR

must be installed so there

chimney flue must be  
season and should be  
bstructions. A clean and  
that could cause injury or  
g the boiler's efficiency.  
plied floor shield. Concrete  
erate on masonry floors,  
s. **Support entire boiler**  
**en subjected to water.**  
s. Do not unscrew any  
s of this boiler without

to shut down and not  
bility, the heating system  
safeguards and alarms  
if the boiler is inoperative.  
has been classified as a  
, under certain conditions  
CF particulates and dust.  
fitting clothing and eye  
stallation, Operating and  
mpting service or repair.

en installed, maintained  
Operating and Service  
ctions for boiler, burner,  
tly the

**SAFETY**  
DO NOT STORE OR USE GASOLINE OR OTHER FLAMMABLE VAPORS AND LIQUIDS IN THE VICINITY OF THIS OR ANY OTHER APPLIANCE.

Ins  
co  
Ins  
pip  
im  
ca  
Op  
m  
of  
Hi  
ed  
au  
In  
TI  
an  
TI  
in  
ins  
un  
lo  
De  
ov  
wh  
ba  
Th  
pi  
po  
Th  
res  
sh  
sh  
Th  
pos  
chan  
Alw  
prot  
Ser

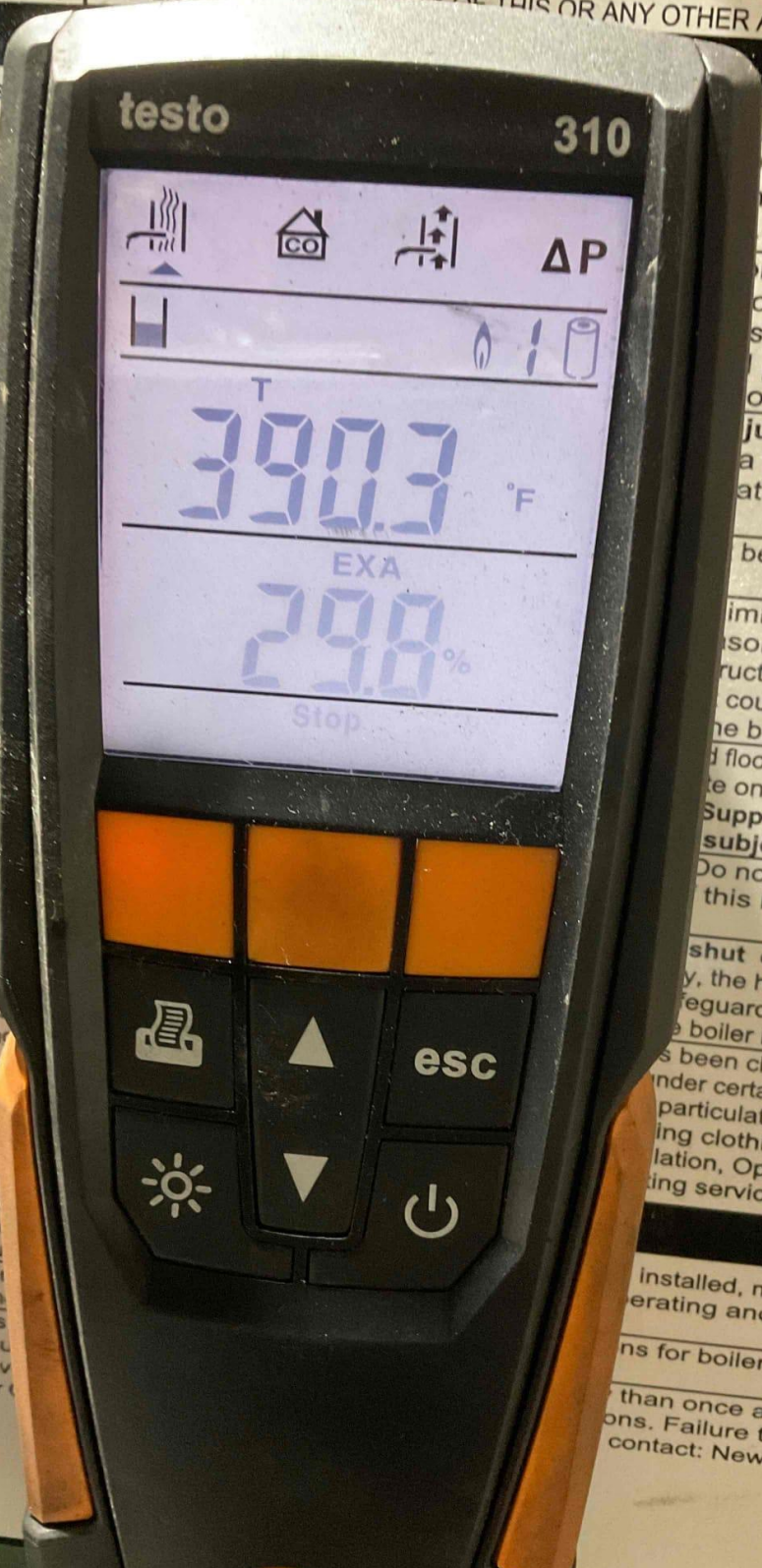
The  
and  
Instr  
Refer  
and n  
If this  
consu  
may v  
Boiler

is installed into  
operating and Ser  
out-off valves in r  
for maintenance  
to the FR Installat  
installation and serv  
personnel. Do r  
operative contro  
jury. If this boiler  
a flow regulator an  
water piping. See FI

be installed so there  
chimney flue must be  
son and should be  
ructions. A clean and  
could cause injury or  
the boiler's efficiency.  
d floor shield. Concrete  
te on masonry floors,  
**Support entire boiler  
subjected to water.**  
Do not unscrew any  
this boiler without

shut down and not  
y, the heating system  
regards and alarms  
the boiler is inoperative.  
s been classified as a  
nder certain conditions  
particulates and dust.  
ing clothing and eye  
lation, Operating and  
ing service or repair.

installed, maintained  
erating and Service  
ns for boiler, burner,  
than once a month,  
ons. Failure to do so  
contact: New Yorker



testo

310



T  
390.3 °F

EXA  
29.8%

Stop



esc

