

# Submittal Data Information Model 0014 Cartridge Circulator

Submittal Data # 101-065  
Supersedes: 06/27/13

Effective: 01/12/15

## Features

- High Velocity performance  
— Compact design
- Quiet, efficient operation
- Direct drive - Low power consumption
- Unique replaceable cartridge design  
— Field serviceable
- Self lubricating
- No mechanical seal
- Unmatched reliability  
— Maintenance free
- Universal flange to flange dimensions
- Cast Iron or Stainless Steel construction

## Materials of Construction

Casing (Volute):.....Cast Iron or Stainless Steel  
Stator Housing:.....Aluminum  
Cartridge:.....Stainless Steel  
Impeller:.....Non-Metallic  
Shaft:.....Ceramic  
Bearings:.....Carbon  
O-Ring & Gaskets:..EPDM

## Model Nomenclature

F – Cast Iron, Flanged  
SF – Stainless Steel, Flanged

## Performance Data

Max. Flow: 32 GPM  
Max. Head: 22 Feet  
Min. Fluid Temperature: 40°F (4°C)  
Max. Fluid Temperature: 230°F (110°C)  
Max. Working Pressure: 150 psi  
Connection Sizes:  
3/4", 1", 1-1/4", 1-1/2" Flanged

## Certifications & Listings

**UL** US LISTED FOR INDOOR USE ONLY

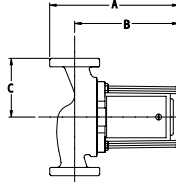
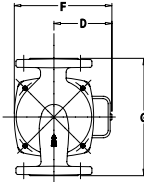
**NSF** Low-Lead Compliant  
Certified to NSF/ANSI 372

## Application

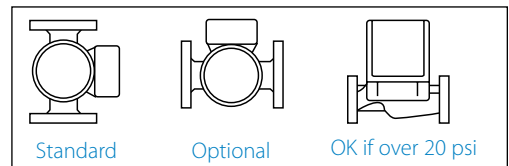
The Taco 0014 is specifically designed for medium head/medium flow applications in large residential and light commercial systems. Ideal for large BTUH boilers, primary/secondary loops, commercial water heaters, and light commercial heating and cooling systems. The Stainless Steel 0014 should be used on open loop systems. The unique replaceable cartridge contains all of the moving parts and allows for easy service instead of replacing the entire circulator. Universal flange to flange dimensions and orientation allows the 0014 to easily replace other models. The compact, direct-drive, low power consumption design makes it ideal for high-efficiency jobs.

## Pump Dimensions & Weights

| Model    | Casing    | A     |     | B       |     | C     |    | D      |    | F     |     | G     |     | Ship Wt. |     |
|----------|-----------|-------|-----|---------|-----|-------|----|--------|----|-------|-----|-------|-----|----------|-----|
|          |           | in.   | mm  | in.     | mm  | in.   | mm | in.    | mm | in.   | mm  | in.   | mm  | lbs.     | Kg  |
| 0014-F1  | Cast Iron | 7-1/4 | 184 | 5-13/16 | 148 | 3-1/4 | 83 | 3-5/16 | 84 | 5-3/8 | 137 | 6-1/2 | 165 | 12.0     | 5.5 |
| 0014-SF1 | S. Steel  | 7-1/4 | 184 | 5-13/16 | 148 | 3-1/4 | 83 | 3-5/16 | 84 | 5-3/8 | 137 | 6-1/2 | 165 | 12.0     | 5.5 |



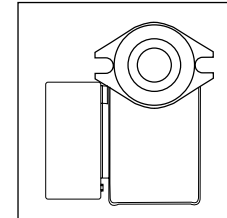
## Mounting Positions



## Electrical Data

| Model                | Volts  | Hz | Ph | Amps | RPM  | HP  |
|----------------------|--|----|----|------|------|-----|
| 0014-F1              | 115  | 60 | 1  | 1.45 | 3250 | 1/8 |
| 0014-SF1             | 115  | 60 | 1  | 1.45 | 3250 | 1/8 |
| <b>Motor Type</b>    | Permanent Split Capacitor<br>Impedance Protected |    |    |      |      |     |
| <b>Motor Options</b> | 220/50/1, 220/60/1, 230/60/1, 100/110/50/60/1    |    |    |      |      |     |

## Flange Orientation



## Performance Field - 60Hz

