

**Now available  
with POLYPROPYLENE  
VENTING. No need for  
expensive SS liners!**

**90+ Resolute, the smart,  
efficient combined heat and  
hot water non-condensing  
boiler system!**



From the  
**SYSTEM  
2000®**  
Family of Products

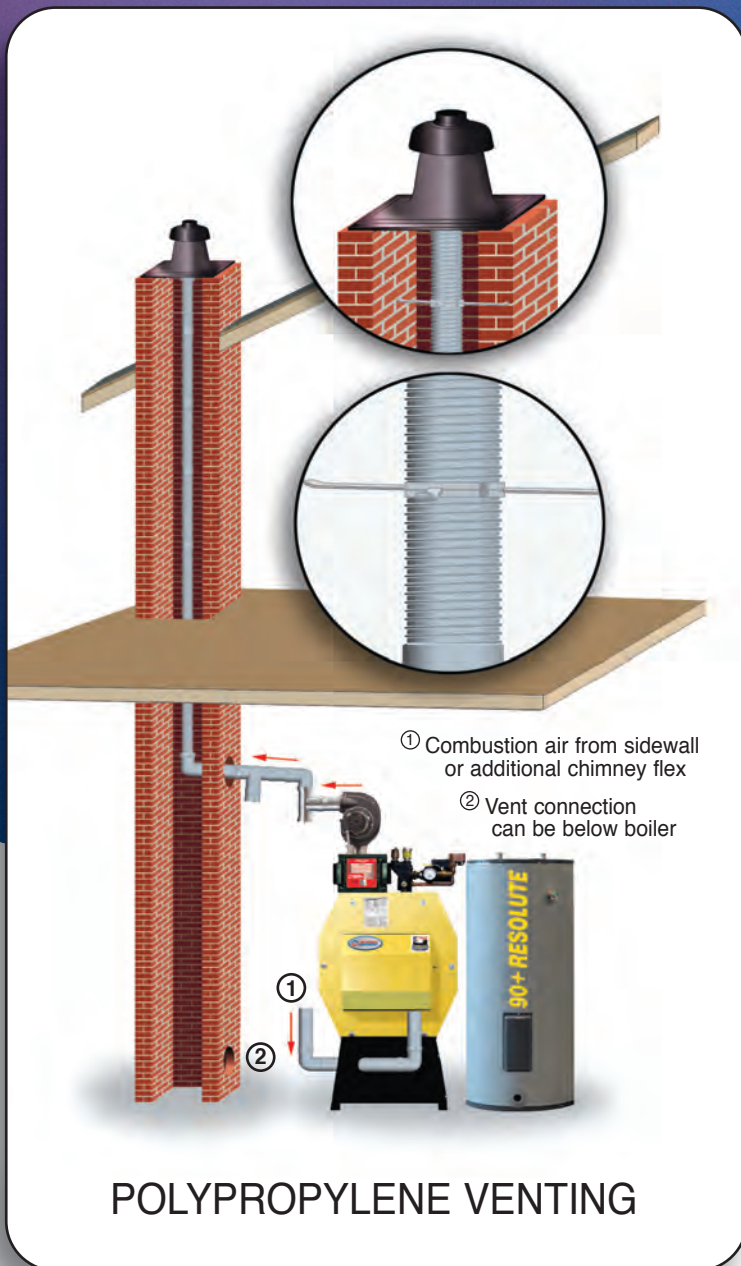
Call us today **800-661-0902** [www.energykinetics.com](http://www.energykinetics.com)

Awarded the ENERGY STAR® Most Efficient mark in 2016.

® The color yellow for heating boilers is a registered trademark of Energy Kinetics.

**90+ RESOLUTE™**

OILHEAT PRODUCT DATA SHEET



- Cuts up to 40% or more off home heating bills!
- **Nearly endless hot showers!** • Whisper quiet operation
- 5 zone control • Easily piped to multiple zones
- Outside combustion air connection • Oilheat (with easy natural gas or propane conversion)
- Outstanding engineering – with **Lifetime Limited Warranty**

# 90+ RESOLUTE™

## OILHEAT PRODUCT DATA SHEET

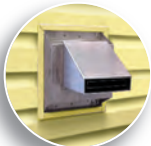
**90+ Resolute is an integrated system – makes both heat and hot water!**

Homeowners enjoy economical heat, plus virtually endless hot showers with lower energy costs.

### 90+ RESOLUTE INCORPORATES MULTI-FUEL TECHNOLOGY

Don't get trapped with one fuel! Our multi-fuel system achieves 90+ AFUE for oil and gas. Simply install an orifice to change between natural gas and propane systems, or use our burner option to change between gas and liquid fuels like Bioheat and oil.

**HYBRID ENERGY RECOVERY®** (thermal purge) – Other boilers shut off with energy left wasted in the boiler. But 90+ Resolute Hybrid Energy Recovery automatically sends remaining heat to the top of the hot water storage tank, or directly into your living spaces. This means the boiler finishes colder and no energy is left wasted. The result: More of your energy dollars provide heat during every cycle, delivering the best possible energy savings.



No chimney is needed! Ground level venting stays relatively cool!



Or, our flexible polypropylene chimney vent is an attractive option where ground level venting isn't practical. (SEE REVERSE)



### Beyond AFUE . . . for the best efficiency!

AFUE does not accurately rate heat and hot water systems and misses *significant* areas of energy loss. This means there are tremendous opportunities to increase efficiency over AFUE estimates alone. The Department of Energy's Brookhaven National Labs study demonstrates our design as the top performing system, saving 38% over other new boilers. And it gets better! In fact, the 90+ Resolute *improves on the highest real efficiency of all tested systems!*

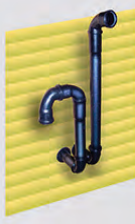
From "The Performance of Integrated Hydronic Heating Systems" by Brookhaven National Laboratory, under contract No. DE-ACO298CH10886 with the United States Department of Energy.

### INSTALLATION FLEXIBILITY

WITH MULTIPLE VENTING OPTIONS



Sidewall direct venting



Through the roof



Chimney

### FEATURES

- Beckett AFG Oil burner and accessories
- Serviceable with normal stock parts
- Proven pressure vessel durability with over 35 years of longevity
- Venting hood and fan prover with over 15 years of field operation
- No troublesome condensate pump
- Blocked vent, blocked intake and fan prover safety circuits for reliable operation
- Use with standard, low sulfur, ultra low sulfur (ULS) heating oil and biofuel (up to B5 blends)

### MORE FEATURES

### BENEFIT

Next generation sidewall vent	Save thousands on chimney construction
15 feet forced counter flow passages	Maximum heat recovery
Low net stack temperature	Stainless and polypropylene vent
Water content: 2½ gal.	Rapid heat up, cool down
Wet base design	Minimizes heat losses
High temp ceramic combustion chamber	Clean, safe, and durable
Jacket & insulation: 90 lbs.	Minimizes heat losses
Buried combustion	Whisper quiet operation
3/16" pressure vessel steel throughout	50% thicker than boiler tubes
ASME code construction and National Board of Pressure Vessels registered	Carefully inspected, pressure tested, and certified
All welded and threaded connections	No gaskets to leak or service
Built-in dynamic air elimination	Eliminates air from system, no "gurgles"
Front cover removable	Easy service and access to all components
Large open water and flue passages	Easy to clean and inspect
Small size	Compact installations
Energy converter weight 270 pounds	Low mass

Thermal purge energy recovery is standard on all systems

### 90+ RESOLUTE SPECIFICATIONS

Input	Output	Domestic Hot Water**
.68 GPH	86,500 BTU/Hr.	175 Gal./Hr.
<b>.74 GPH*</b>	<b>94,000 BTU/Hr.</b>	<b>186 Gal./Hr.</b>
.85 GPH	108,000 BTU/Hr.	208 Gal./Hr.
1.00 GPH	127,000 BTU/Hr.	238 Gal./Hr.

\*Factory firing rate. \*\*Domestic hot water rate based on first hour draw with 77°F rise and 40 gallon tank.

**AFUE 90.7%**



Lifetime Limited Warranty on Digital Energy Manager and on ASME pressure vessels. See actual warranty for details.



51 Molasses Hill Road  
Lebanon, New Jersey 08833  
T: 800 323 2066 • F: 800 735 2068  
visit: [www.energykinetics.com](http://www.energykinetics.com)