



# Products & Spare parts

European Metric Version



# Welcome to your complete supplier!



Alde is a system supplier for the mobile and marine market with a complete range of products for a heating installation.

In addition to our LPG central heating boilers, we also produce supplementary products in the form of convectors, assembly parts, immersion heaters, water heaters, leak testers, etc.

## **Always updated with latest information**

Visit our website [www.alde.us](http://www.alde.us) to always find the latest product specifications or digital brochures. You can also download installation and user manuals for most of our products

## **Together we will be even better!**

We are world leaders in our field, and that makes us proud. Yet, if you see us as warm and welcoming in your dealings together that would make us even prouder.

We are happy to listen to experiences, suggestions and opinions, which may help us to improve. Building strong and long lasting relationships with our customers and dealers is extremely important to us.

## **Alde Corp**

Alde Corp is located in Vancouver Washington where the company provides technical, manufacturing, installation and service support for North America. With a focus on building strong relationships Alde welcomes you to our headquarters or at many of our attended industry events.

## **Alde International Systems AB**

**Since its inception the company has** supplied quality products for recreational vehicles, mobile homes or portable offices, boats, etc. under the brand Alde. Our main product is the LPG central heating boiler for hydronic heating in the form of the Alde Compact 3010. Over 60 years in the industry ensures not only exceptional products, but also a unique concern for our dealers and customers.

## **Alde Rask, who founded the company in 1949,**

was a unique inventor and entrepreneur. In his spirit, we continue with sustained innovation and technical development, with emphasis on comfort in caravans, mobile homes and boats.

Our ambition is to continue to be a world leader within the field. We are therefore constantly looking at how we can develop even better functions, even longer lifespan and better service. Silent, invisible and pleasant comfort is what we do - every day.

*In the process of continual improvement product design may change from that shown in this catalogue.*

**The company has ISO certification**  
in accordance with the quality  
standard ISO 9001:2000.

**DS**  
DS/EN ISO 9001



# Quiet and comfortable heating



## **Nothing can compete with hydronic heating.**

Quiet, uniform and embracing. Hydronic heating that is just there, without being noticed - that's how hydronic heating from Alde is perceived. Hydronic heating provides not only beautiful and silent heating. It also gives dust-free and healthy air with natural moisture.

## **Trouble free quality.**

An Alde heating system produces safe heating and hot water year in and year out, no worries. The unusually high quality and reliability are probably to do with our origins. The system was developed in Sweden, with a cold and harsh climate. This demands products that are reliable and that work flawlessly in all weather conditions and seasons. In our production, we test every day, to ensure quality and efficiency that lasts. We have done this since 1966, when the first Alde boiler was manufactured.





Thank you

every one of our fantastic customers who have trusted in us  
to equip their vehicles with an Alde hydronic heating system.



# Heating



## Hydronic heating

The Alde central heating system is a hydronic system, with the same heating principle as in many of our homes.

The heat source comprises a LPG boiler with an immersion heater, which heats a liquid mixture consisting of water and glycol. Hot glycol water circulates around the system through radiators and pipes by means of a pump.

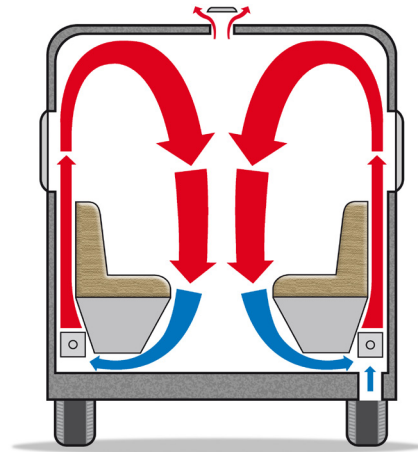
The convectors that are placed along the outer walls heat the air. This then rises and heats the walls and furniture.

Since hot air rises, an air barrier is formed in front of the windows, which keeps the chill off. When the warm air reaches the ceiling, it circulates down towards the floor and is reheated by the convectors. Each vehicle must have ventilation, i.e. fresh air needs to be supplied and used air expelled. The supplied fresh air in the vehicle should be directed in through an insulated air intake and on up through a convector with closely spaced slats. In this way the incoming fresh air is heated when the heating system is operational. The used air is ventilated out through the roof panel and ventilators.

The installation is important to produce the best heat distribution and pleasant heating.

- As many and as long convectors as possible.
- Convectors must be placed under each window.
- The convectors are installed along and up against the outer walls.
- Air must be able to pass under beds and behind backrests.
- Ventilation in the cabinet so that air can circulate.

If the installation is correct, the natural flow of heat from the Alde central heating system means that the entire living space is wrapped in a comfortable environment, which shuts out drafts, eliminates cold spots and also heats both beds and cabinets. The installation of underfloor heating is also recommended to give a very complete heating system with maximum comfort. The heating pipes in the floor are connected to the ordinary pipe system.

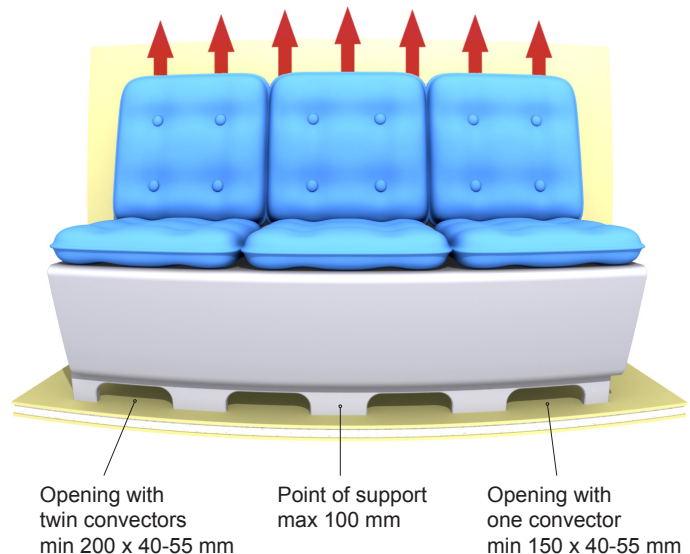
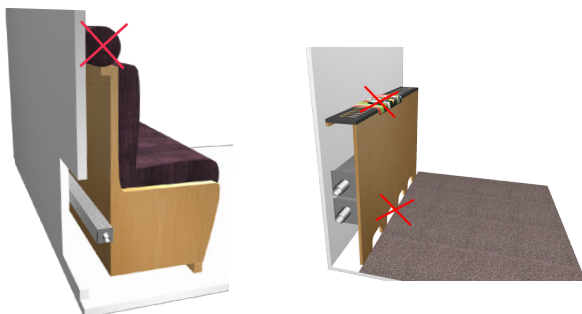


## Installation Suggestions

For the heating system to work optimally, it is important that the convectors should be installed in the right way. Below are given some examples of the most common ways of installing convectors and pipes.

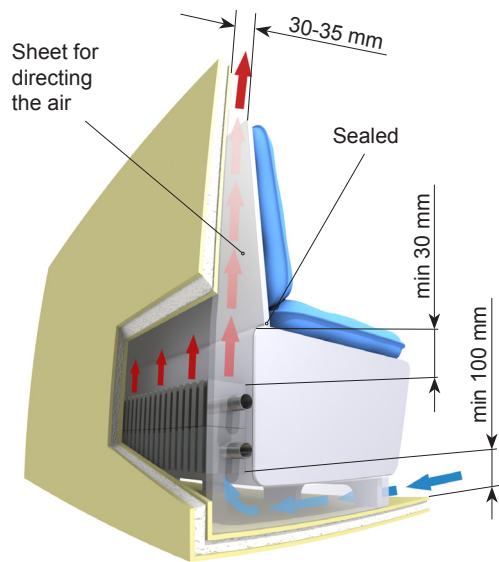
### Attention!

Do not place pillows, blankets or the like over the circulation openings. No thick rugs by the openings or newspapers on top of the grilles, which will obstruct the air flow.

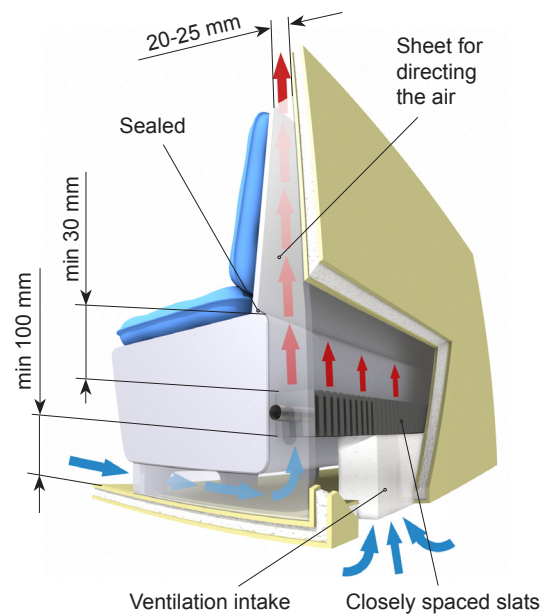




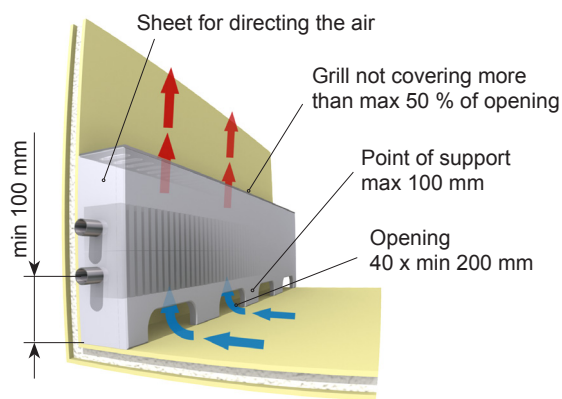
### Twin convectors in bed case



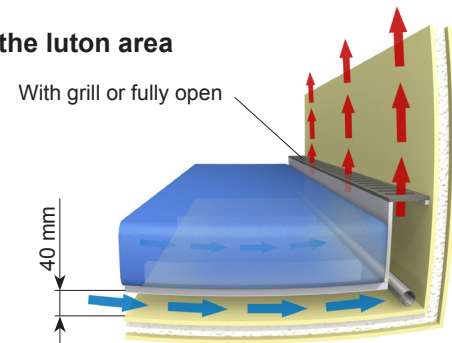
### Convactor and ventilation intake in bed case



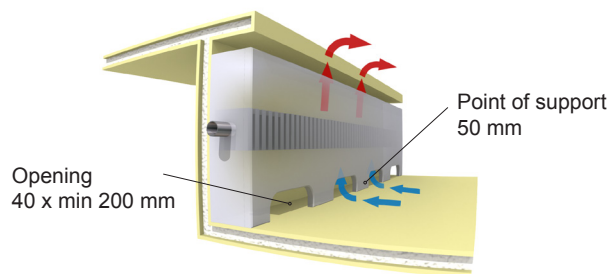
### Twin convectors on wall



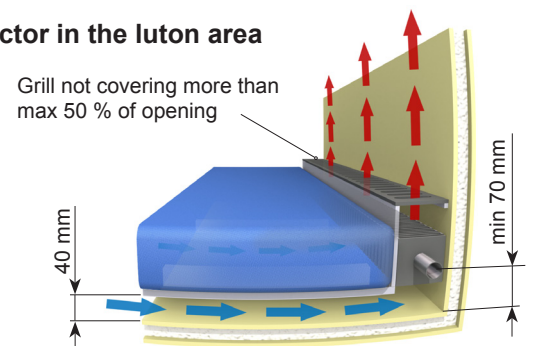
### Pipes in the luton area



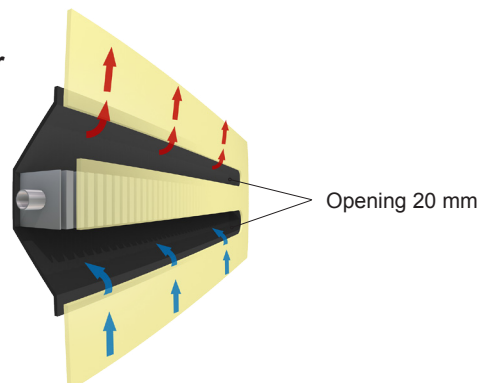
### Convactor at entrance



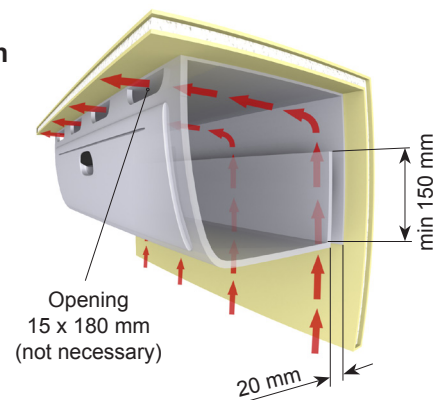
### Convactor in the luton area



### In-built convector



### Air circulation in cabinet



# Alde Heating Technology.

## Clean, Quiet and Comfortable.



### Boiler Alde Compact 3010

The boiler is the heart of the heating system. It produces heat for both central heating and hot water. Thanks to our ingenious and compact construction, the boiler takes up very little space. The boiler is fueled by LPG or electricity (120 V). It can also be fuelled by both at the same time when you need maximum power, e.g. when heating up a cold motorhome in the winter.



### Digital control panel

If the boiler is the heart of the system, the digital control panel is the brain. The control panel has a user-friendly touch-screen menu with functions for outdoor temperature, night-time mode, timed starting, external starting, etc. This is where you set desired temperatures and energy sources, and connect and adjust the boiler's extra functions.



### Hot water

The Alde Compact 3010 boiler contains a hot water heater maintaining and providing hot water for the shower and galley. In the summer, the boiler can be set to only produce hot water.



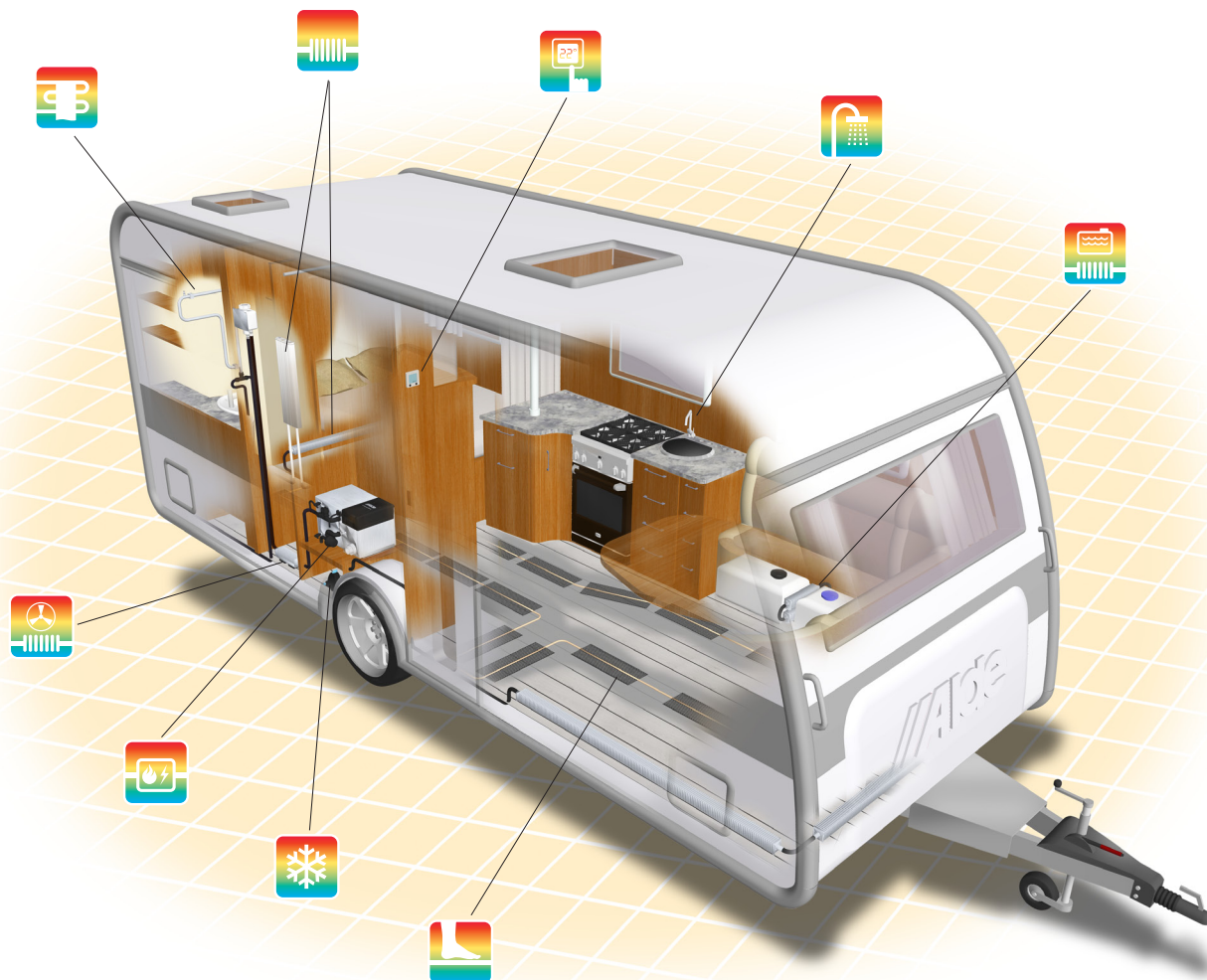
### Underfloor heating

In order to have a complete heating system that offers maximum comfort we recommend our underfloor heating. It consists of pipe loops in the floor that are connected to the normal heating system. Diffusion plates spread the heat evenly across the whole floor.



### Frost protection

Frost protection is a drainage/safety valve that automatically empties the hot water when there is a risk of freezing (around +3°C). Also acts as a safety valve against excess water pressure, and as a manual drainage valve.







### Convectors and panel radiators

The convectors are located along the outer walls where they provide heat and surround the interior with a protective blanket of heat that prevents drafts. They can be supplied in various dimensions and designs. The integrated convectors are often used in stowage spaces and stair risers. Flat panel radiators can be supplied for spaces where it is very difficult to fit normal convectors, e.g. in bathrooms and wardrobes.



### Driver's comfort

To achieve comfort in and around the driver and passenger seats, there are purpose-designed convectors that can be fitted to Alde's heating system. Other alternatives are heating boosters or fan-driven convectors.



### Heat exchanger

With a heat exchanger installed in our hydronic central heating system, the vehicle's coolant system can be exploited for heating and hot water. The heat can also be run in the opposite direction using a circulation pump on the engine side, acting as an engine pre-heater.



### Fan-driven heat booster

The heat booster is used for rapid and direct heating in the driver's cabin, or in wardrobes to dry wet clothes and shoes, for example.

It can be supplied in various versions. The most powerful model is a compact convector package with an efficient rear-mounted fan. The small model consists of a specially designed convector with a row of small fans connected in series. In order to improve your motorhome's comfort further, the fan-driven convector can be fitted in the floor behind the seats. The upward-driven hot air then creates a heat barrier between the living space and the driver's cabin. Saves energy and increases comfort!



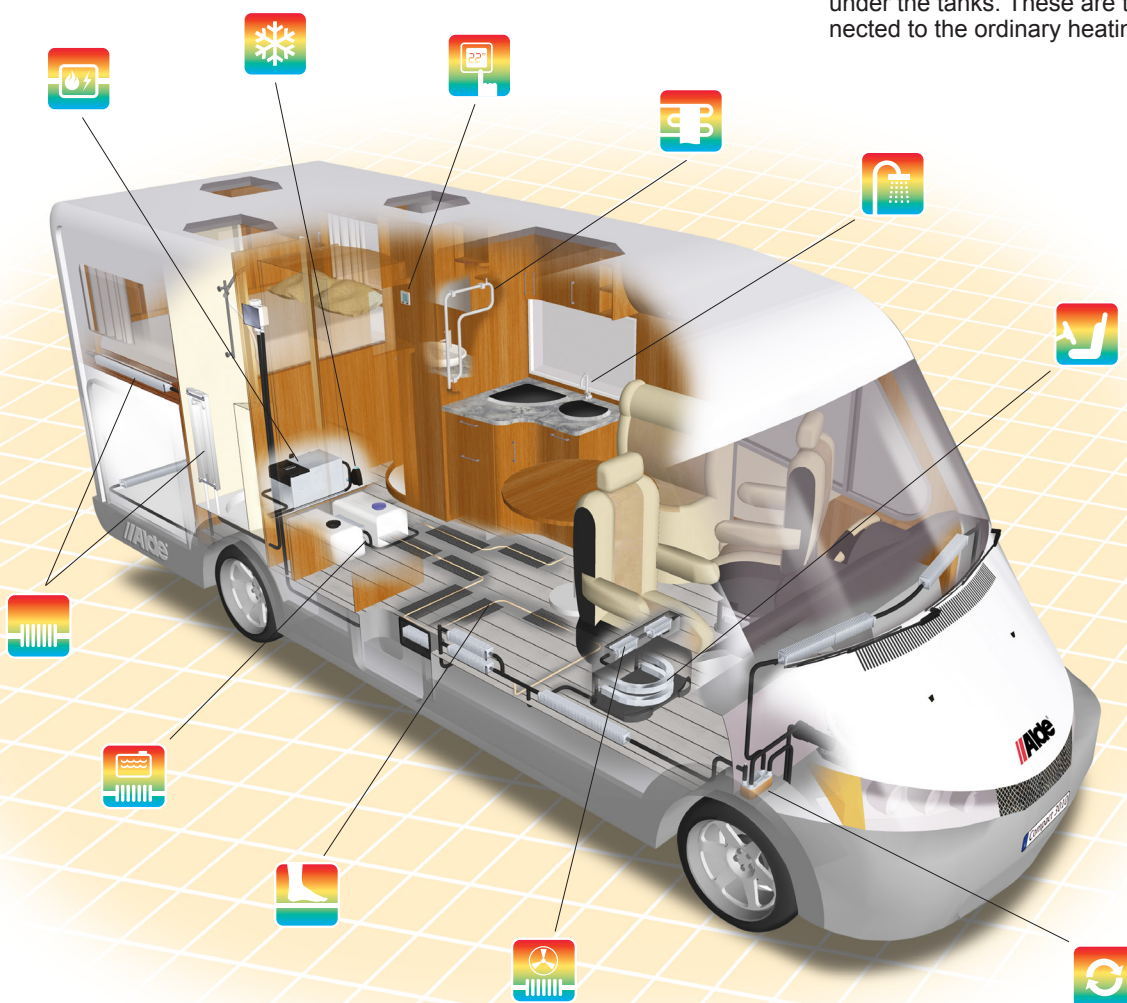
### Heated towel rail

The heated towel rail is a traditional design for the practical hanging of towels. There are also models that offer individual temperature regulation



### Tank heating

Alde's tank heating protects your fresh water and sewage tanks against frost damage. There are several installation solutions. Some involve convectors fitted between the tanks, some a pipe loop under the tanks. These are then connected to the ordinary heating system.



# Central heating Compact 3010

## The heating system mobile living

The Alde 3010 Compact central heating and hot water boiler is the ideal choice for recreational vehicles, motor home, caravan and portable accommodation applications. It offers a combined 7.5 kilowatt output giving plenty of hot water and is able to utilize up to 14 meters of Alde convectors. The boiler automatically adjusts its power output to match demand to ensure maximum efficiency operating on either LPG or 120V.

All connections are located on the front of the boiler to allow a tidy installation that maximizes usable space and location options. Side or roof flue terminals are available, linked to the boiler by a flexible flue which cools the exhausts gases giving further installation possibilities.

The glycol fluid is circulated silently around the heating system by the unique Alde 12V pump which works with the header tank to give a very low battery draw for extending trips away without electrical hook up. As the heated glycol solution passes through the system, the convectors give an even temperature throughout with minimum heat fluctuation, just like a modern central heating system found in a home.

## Boiler design

The Alde Compact 3010 boiler has been designed to deliver reliable superior heating in the toughest Scandinavian conditions. Testing and monitoring of quality parts and materials is ongoing and rigorous. The boiler consists of three eccentrically-fitted cylinders (heat exchanger, water jacket for the heating system and, outermost, water jacket for hot water). The two outer pipes, and their ends and connections, are made of stainless steel, while the heat exchanger is made of aluminum.

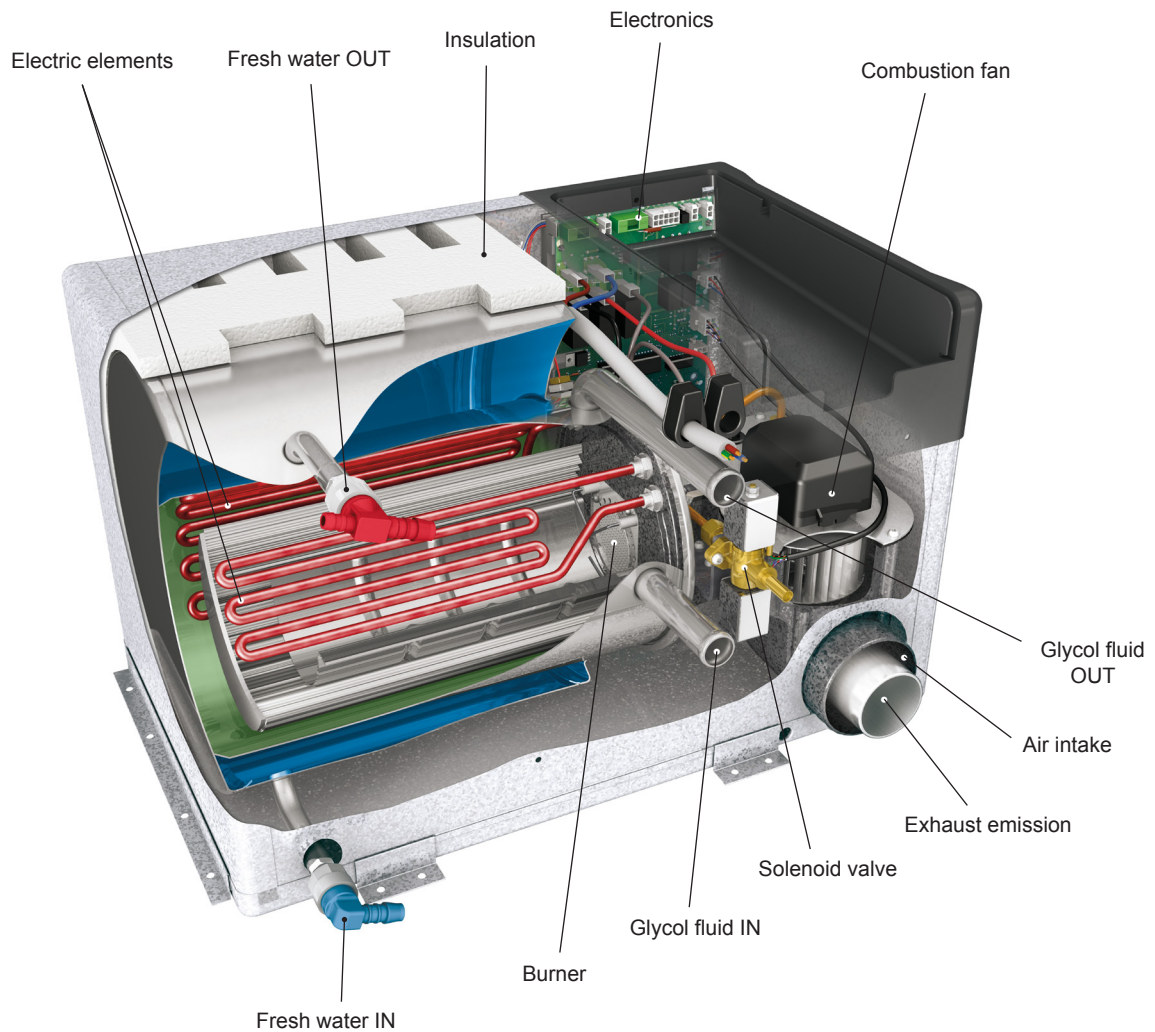
The heat exchanger is divided into two semi-circles. The burner is located in the upper half, being the combustion chamber, and the combustion gases are expelled through the lower half. The burner unit is fitted on the end of the heat exchanger. It consists of a combustion fan, burner, solenoid valve and intake/exhaust connections.

Two heating cartridges are fitted to the water jacket of the heating system.

Art.No. 3010 9301      Compact boiler.



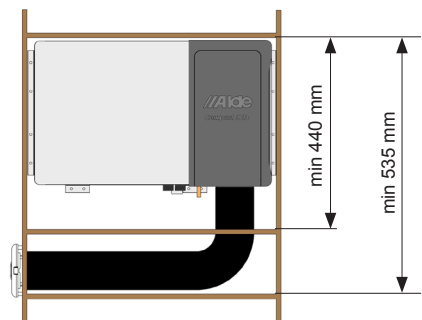
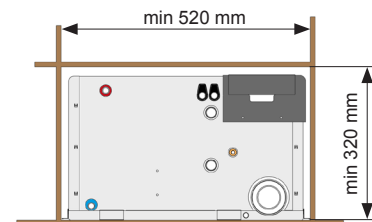




## Technical data

Height:	310 mm
Breadth:	340 mm
Depth:	490 mm
Weight (without fluid):	14 kg
Gas:	Propane
Output Step 1:	3.3 kW
Gas consumption:	245 g/h
Output Step 2:	5.5 kW
Gas consumption:	405 g/h
Gas pressure:	27 - 35 mbar
Volume glycol fluid:	3.5 lt
Volume fresh water:	8.4 lt
Max. pressure glycol fluid:	0.05 MPa (0.5 bar)
Max. pressure glycol fluid:	0.3 MPa (3.0 bar)
System temperature (max):	80 °C
Power electric element 120 V:	2 x 950 W
Power consumption 12 V DC:	1 amp (max)

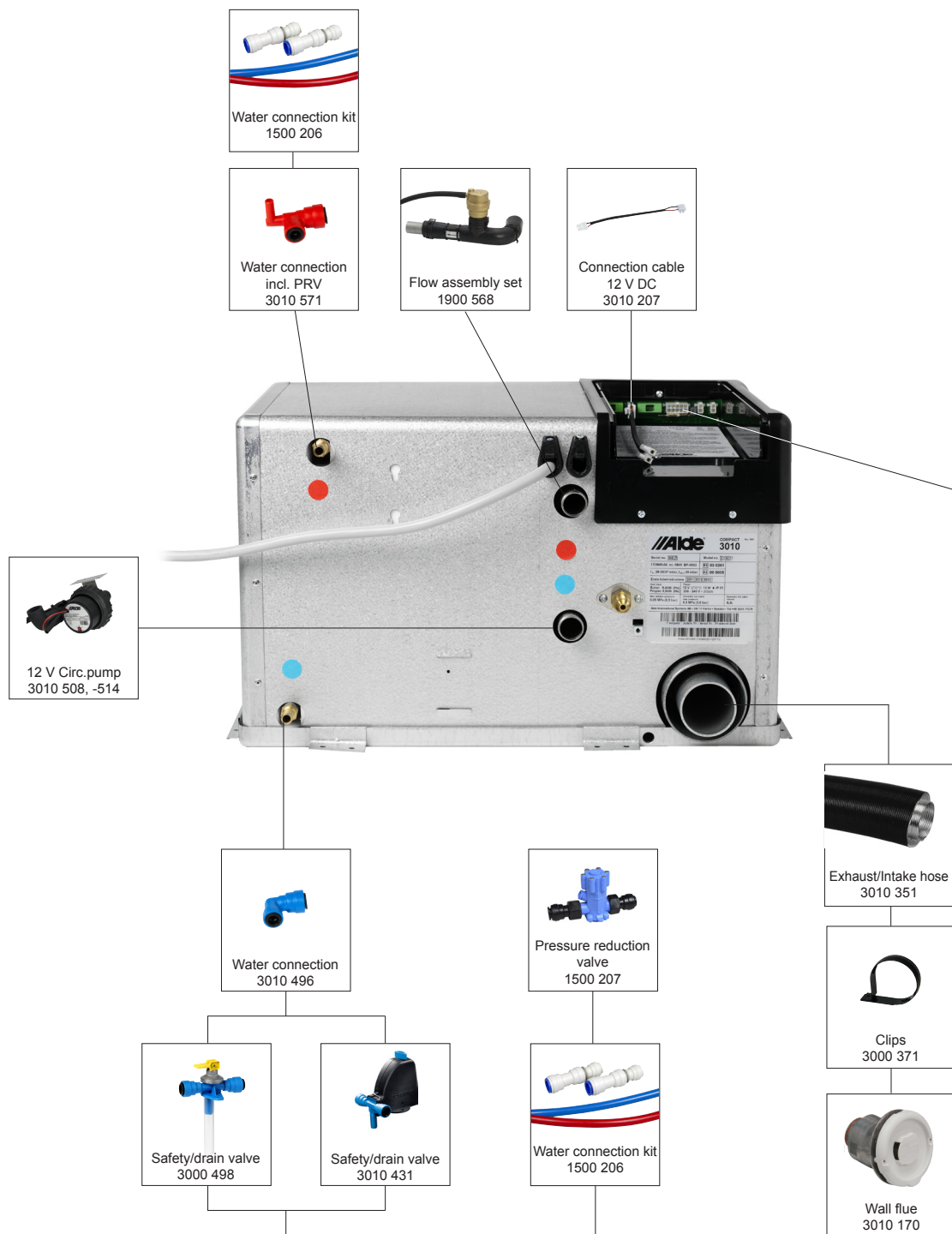
## Installation space



# Installation guide for Compact 3010

In order to install and use the boiler, a number of assembly parts are required.

- Wall flue.
- Intake hose, exhaust hose respectively.
- Extension cable between the boiler and the control panel.
- Control panel.
- Flow assembly set, recommended for all boilers.
- Nipples for the fresh water connections.
- Safety/drain valve which is installed on the fresh water hose.





In order to fine-tune and improve Compact 3010, there are additional accessories that can be connected to the control panel.

- Outdoor temperature sensor.
- Remote room temperature sensor.
- Load monitor.
- Cable for external start of the boiler, for example, mobile start.
- Battery backup.
- Control of the speed of the circulation pump with PWM.



## Control panel for Compact 3010



### Control panel - Color Touch

Alde's control panel is based on the latest technology. Its 3.5" TFT touch screen makes it easy to navigate through the various functions. The screen resolution ensures a clear picture in both daylight and darkness. It features user-friendly interface, with self-explanatory menus in color.

The control panel is divided into three menu categories:

**Information menu.** This shows time, temperature and what is connected to the Compact 3010.

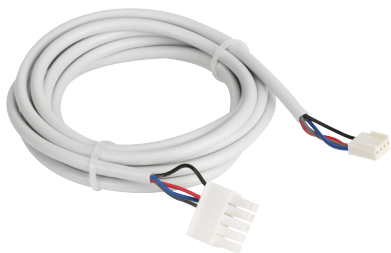
**Settings menu.** This is where you set the basic settings for heating, such as desired temperature, extra hot water and energy selection.

**Tools menu.** This is where you can adjust and connect extra functions to the Compact 3010.

Pump speed, Celsius / Fahrenheit, Screen brightness, Clock, Automatic start, Load sensor, Constant pump operation, Automatic temperature change (night-time mode)

Size: 97 x 86 mm.

Art.No. 3010 614



### Cable for programmable control panels

Connection cable between boiler and control panel.

Art.No. 3010 215 Length 2.5 m.

Art.No. 3010 216 Length 5.0 m.

Art.No. 3010 217 Length 8.5 m.

### Discrete room temperature sensor

Enables the control panel to be located in any position, discrete sensor over-rides control panel's sensor.

Art.No. 3010 238 Sensor. 8 pcs/pack.

Art.No. 3010 226 Cable. Length 0.5 m.

Art.No. 3010 253 Cable. Length 2.0 m.

Art.No. 3010 254 Cable. Length 8.0 m.



### Zonal heating sensors

Using two room sensors improves the comfort in many vehicles that have sitting and sleeping areas located some distance from each other. The switch allows manual switching between room sensors in the sitting area and the sleeping area. This gives a more even temperature in the area you are using.

Can be used either with two remote sensors or with a remote sensor and with the control panel's room sensor. Assembly set with 1 sensor, switch, 12 m cable, junction card and a cable to the switch.

Art.No. 3010 435

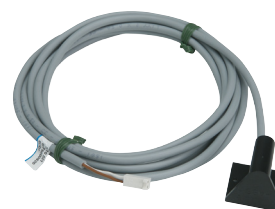


### Outdoor temperature sensor

Sensor with cable for reading outdoor temperature, displayed on control panel.

Art.No. 3010 221 Length 2.5 m.

Art.No. 3010 222 Length 5.0 m.



## Accessories for Compact 3010

### Battery backup - AA

Battery backup for touchscreen control panel.

Saves clock and other settings in the memory even when 12 V supply is disconnected.

Requires 2 × AA batteries.

Art.No. 3010 414



### Window circuit breaker

Switches off the boiler if the window is opened.

Art.No. 3010 280 Window circuit breaker.

Art.No. 3010 220 Connection cable. Length 0.2 m.



### Load monitor

Used to limit 120 V power consumption of the vehicle. Powers down the electric heating in stages if the load exceeds that set on the control panel.

Art.No. 3010 642





## Flue, intake- & exhaust hose for Compact 3010



### Wall flue

Flue for side installation. Delivered with hose clips for exhaust hose and inlet hose. White flue cap.

Size of hole Ø 83 mm.

Art.No. 3010 170



### Wall flue cap

Cap in different colors for wall flue 3010 170.

120 pcs/pack.

Art.No. 3010 374 Light grey

Art.No. 3010 373 Medium grey

Art.No. 3010 371 Dark grey

Art.No. 3010 372 Black



### Hose set for flue

Exhaust hose Ø 50.5 mm in aluminum.

Intake hose Ø 75 mm in aluminum.

Permitted length of hose: 0.5-2.0 m.

Art.No. 3010 351 Length 0.7 m

Art.No. 3010 352 Length 0.97 m

Art.No. 3010 353 Length 1.45 / 1.5 m

Art.No. 3010 354 Length 1.95 / 2.0 m



### Insulation hose

Insulation hose Ø 80 x 13 mm. Is mounted on the Intake hose in order to reduce noise from fan and boiler operation. Length 2.0 m.

Art.No. 3000 361



### Clips

Clips for securing Intake hose. The hose should be fastened at c/c 60 cm.

450 pcs/pack.

Art.No. 3000 371

### Inline circulation pump

Circulation pump for mounting on Compact 3010.  
Five speed with adjustable dial on motor. 6-15 L/min.  
Power consumption 12 Volt: 0.25 - 1.9 A.  
Ø 22 mm connection.  
Art.No. 3010 508



### Inline circulation pump - Remote controlled

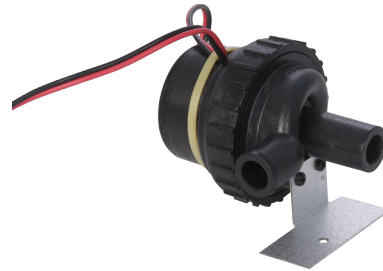
Circulation pump for mounting on Compact 3010.  
Connected to control panel to allow remote control of  
pump speed by PWM. Five speed 6-15 L/min.  
Power consumption 12 V: 0.25 - 1.9 A.  
Ø 22 mm connection.

Art.No. 3010 514 Circulation pump  
Art.No. 3010 515 Cable. Length 13 m  
Art.No. 3010 516 Cable. Length 8.5 m



### Inline circulation pump - Bracket-mounted

Circulation pump for installation anywhere in a heating  
system.  
Five speed with adjustable dial on motor. 6-15 L/min.  
Power consumption 12 Volt: 0.25 - 1.9 A.  
Ø 22 mm connection.  
Art.No. 3010 510



## Sundry assembly parts

### Flow Assembly

Rubber connector with automatic air bleed valve, and  
non-return valve to prevent auto-circulation of central  
heating. Fitted on the boiler's outgoing connection.  
Art.No. 1900 568



### Floor inlet

Floor inlet for air hoses and draining hoses from the  
expansion tank and boiler. Outlet for four hoses.  
Size of hole: Ø 32 mm. 50 pcs/pack.  
(The hoses are not included, only for the illustration).  
Art.No. 1900 565



## Water connection for Compact 3010



### FrostControl

Combined safety valve and drain tap. Integrated frost protection that opens and drains the water heater automatically when there's a risk of frost (about +3 °C). The drain tap can also be opened manually. Installed close to the boiler's incoming fresh water pipe. Ø 12 mm connection.

Art.No. 3010 431



### Safety/drain valve

Combined safety valve and drain cock. The safety valve opens at 3.5 bar. When draining water from the heater, the yellow lever is pushed upwards. Installed close to the boiler's incoming fresh water pipe.

Ø 12 mm connection.

Art.No. 3000 498



### Domestic cold water connection

Angle 90° for cold water. Ø 12 mm connection.

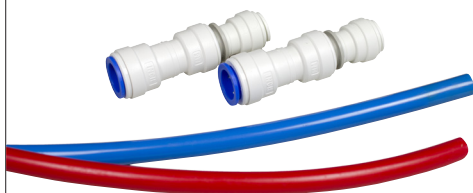
Art.No. 3010 496



### Domestic hot water connection

Angle with built-in non-return valve which allows air in when the heater is drained. For hot water. Incl. 0.5 m hose for air in. Ø 12 mm connection.

Art.No. 3010 571



### Water connection kit

From Ø 12 mm to 5/8". Incl. 0.5 m hose for cold and hot water.

Art.No. 1500 206



### Pressure reduction valve

Pressure (lockup): 2.2-2.5 bar at inlet pressure 3.0-7.0 bar.

Pressure (flow): 1.8-2.1 bar at inlet pressure 3.5 bar.

Maximum inlet pressure: 7.0 bar

Art.No. 1500 208



### High-temperature mixing valve

Mixing valve for wall mounting. The desired hot water temperature is set with the control knob to between 38 and 48 °C. The valve is ideally suited to prevent scalding water from the shower and wash basin.

Art.No. 3102 002

#### Technical data

Size:	H 126 x B 165 x D 52 mm
Connection:	Quick connector Ø 12 mm
Weight:	0.7 kg



## Expansion tank - Wall

Expansion tank including wall-mounting and drainage hose. Reversible for adaptation to the heating system's pipes.

Art.No. 3000 420

Technical data	
Breadth:	180 mm
Height:	231 mm incl lid and connection pipe
Depth:	75 mm
Volume:	1.5 L
Connection:	Ø 22 mm



## Expansion tank - Corner

Expansion tank for corner installation including wall-mounting and drainage hose.

Art.No. 3000 495

Technical data	
Breadth:	210 mm
Height:	231 mm incl lid and connection pipe
Depth:	116 mm
Volume:	2.0 L
Connection:	Ø 22 mm



## Protective cover - Wall

Protective cover in light grey plastic, for mounting in front of the expansion tank. Only fits expansion tank 3000 420.

Size ca 700 x 200 mm.

Art.No. 3000 440



## Protective cover - Corner

Protective cover in light grey plastic, for mounting in front of the expansion tank.

Only fits expansion tank 3000 495.

Size ca 710 x 250 mm.

Art.No. 3000 640



## Rubber blank

Rubber blank for inserting into expansion tank.

Art.No. 3000 416



# Engine heat exchanger



## Engine heat exchanger

The waste heat in an engine's cooling system can be used for heating the living space via Alde's engine heat exchanger and central heating system. Then all that's required is to set the desired room temperature on the control panel as normal and the central heating circulates automatically when called for.

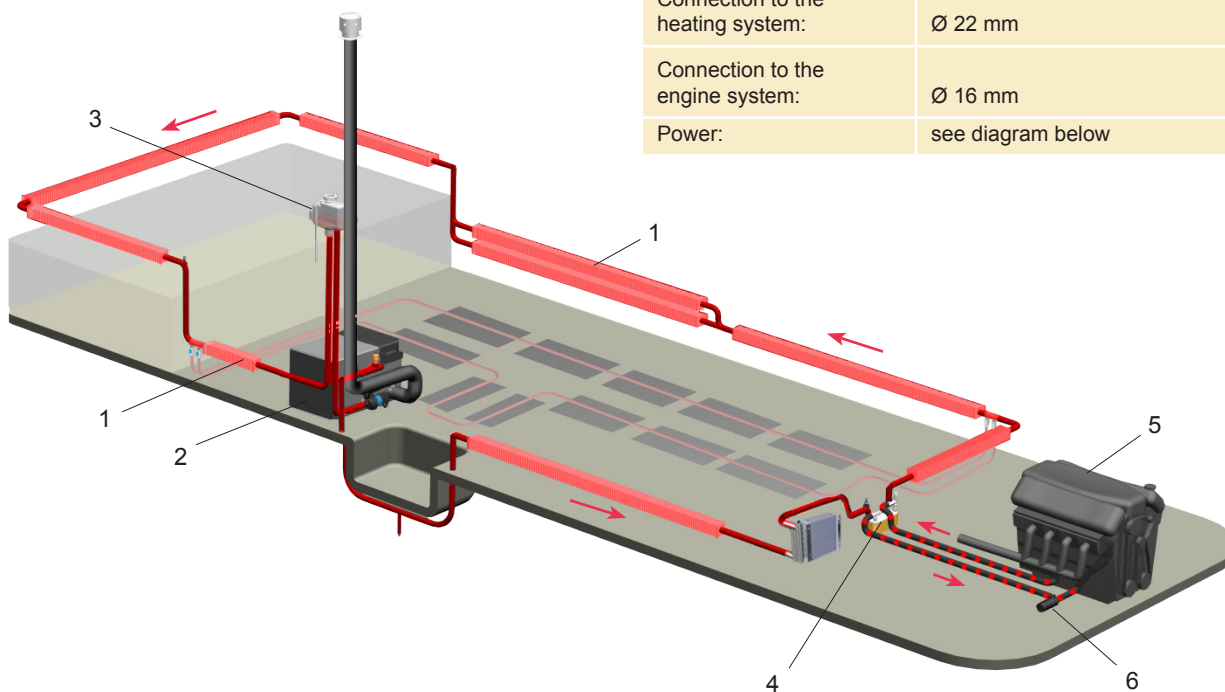
The system can be reversed if a circulation pump (2755) is installed in the engine cooling system, allowing the engine to be pre-heated, saving the extra fuel used in cold starting.

*When installing the engine heat exchanger, the vendor or vehicle manufacturer should be consulted to avoid technical mishap.*

Art.No. 2968 901 Standard model

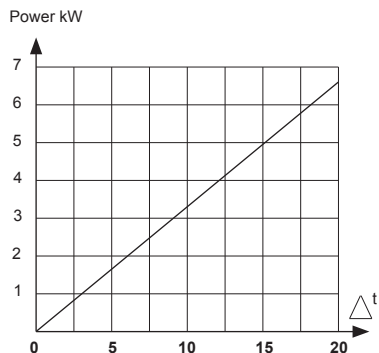
Art.No. 2968 912 With shut-off cock, angled connections and venting nipple.

1. Convectors.
2. Central heating boiler.
3. Expansion tank.
4. Engine heat exchanger 2968.
5. Engine.
6. Circulation pump 2755.



### Technical data

Size:	L 190 x B 72 x H 65 mm (excl. connections)
Weight:	1.3 kg
Connection to the heating system:	Ø 22 mm
Connection to the engine system:	Ø 16 mm
Power:	see diagram below



$$\Delta t \left[ \frac{t_1 + t_2}{2} \right] - \left[ \frac{t_3 + t_4}{2} \right]$$

$t_1$  = Incoming liquid temp. (vehicle's cooling system)

$t_2$  = Outgoing liquid temp. (vehicle's cooling system)

$t_3$  = Incoming liquid temp. (central heating system)

$t_4$  = Outgoing liquid temp. (central heating system)

(The liquid consists of 50% water and 50% glycol.)

## Bracket

Bracket for engine heat exchanger.  
Art.No. 2968 303



## Radiator hose

Radiator hose reinforced, Ø 15.7 x 3.6 mm. 60 m/pack.  
Art.No. 2968 302



## Rubber elbow

Rubber elbow 150 x 150 mm. Ø 15 x 4.5 mm.  
100 pcs/pack.  
Art.No. 2968 301



## Clamp

Band clamp 22 x 12 mm for reinforced radiator hose and rubber elbow 2968 301.  
Art.No. 1900 225



## Connector

Plastic connector 16 – 22 mm.  
Art.No. 2968 322



## T-pipe

For the connection of the engine heat exchanger to the motor.

Art.No. 2968 304 16/16/16 mm in brass.

Art.No. 2968 316 16/19/19 mm in brass.

Art.No. 2968 319 19/19/19 mm in brass.

Art.No. 2968 306 16/22/22 mm in plastic.



## Assembly set

Assembly set with rubber angles, clips and holder for engine heat exchanger 2968 901.  
Art.No. 2968 300



## Heating control

Heating control for remote control of the flow between the motor and engine heat exchanger. Ø 16 mm hose connection. Wire length: 1.0 m.  
Art.No. 2968 310



## Circulation pump - Engine pre-heat

Is used when the central heating and engine heat exchanger are to function as an engine-pre-heater. The permanent magnetic centrifugal motor does not restrict circulation when not in use.

Art.No. 2755 000

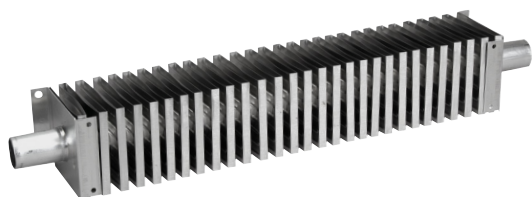


### Technical data

Hose connection:	Ø 16 mm
Max. flow with 0.1 bar :	15 l/min
Voltage:	9 - 15 V
Power consumption	< 1.2 A



## Convectors



### Convectors

Convectors in Aluminum. 42 pcs/pack.

Art.No. 1900 385	Length 400 mm.
Art.No. 1900 384	Length 700 mm.
Art.No. 1900 383	Length 1000 mm.
Art.No. 1900 382	Length 1300 mm.
Art.No. 1900 381	Length 1600 mm.
Art.No. 1900 380	Length 1900 mm.

#### Technical data

Height including mounting:	60 mm
Depth including mounting:	65 mm
Output:	400 W/m
Weight:	0.6 kg/m
Connection:	Ø 22 mm



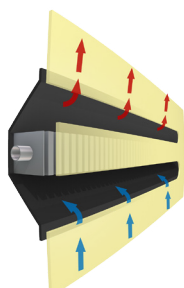
### Convector with guard

Convector with fitted guard of structured aluminum sheet.

Art.No. 1900 424	Length 430 mm.
Art.No. 1900 407	Length 600 mm.
Art.No. 1900 405	Length 900 mm.
Art.No. 1900 408	Length 1200 mm.
Art.No. 1900 406	Length 1500 mm.

#### Technical data

Height including mounting:	85 mm
Depth including mounting:	68 mm
Output:	400 W/m
Weight:	0.8 kg/m
Connection:	Ø 22 mm



### In-built convector

Convector in aluminum for recessing in stowage compartments, etc. Power approx. 400 watt/m.

Art.No. 1900 456	Length 305 mm.
Art.No. 1900 457	Length 555 mm.
Art.No. 1900 458	Length 805 mm.

Technical data	1900 456	1900 457	1900 458
Height including frame:	205 mm	205 mm	205 mm
Length including frame:	305 mm	555 mm	805 mm
Pipe length:	336 mm	577 mm	830 mm
Depth:	65 mm	65 mm	65 mm
Weight:	0.3 kg	0.5 kg	0.75 kg
Connection:	Ø 22 mm	Ø 22 mm	Ø 22 mm

## Miniconvectors

Convactor in Aluminum for special applications.  
Including plastic holders.

Art.No. 1900 081 Length 400 mm.  
Art.No. 1900 082 Length 600 mm.  
Art.No. 1900 085 Length 900 mm.  
Art.No. 1900 083 Length 1000 mm.  
Art.No. 1900 084 Length 1200 mm.

Art.No. 1900 597 Rubber sleeve Ø 16 > 22 mm.  
600 pcs/pack.

Technical data	
Height including mounting:	44 mm
Depth including mounting:	36 mm
Output:	180 W/m
Weight:	0.4 kg/m
Connection:	Ø 16 mm



## Seat heating convector

U-shaped convector package for mounting in the seat base. They click in place on the underframe of the seat, in one simple operation. Available for Fiat, Peugeot, Citroën and Renault chassis.  
Supplied with clips, rubber connection and clamps.

Art.No. 1900 830

Technical data	
Height:	200 mm
Width:	345 mm
Length:	480 mm
Output:	150 W
Weight:	1.1 kg
Connection:	Ø 22 mm





## Heated towel rail

Heated towel rail in chrome plated steel tubing which is assembled directly into the normal central heating system.

Art.No. 1900 619

### Technical data

Height:	650 mm
Breadth:	440 mm
Weight:	1.0 kg
Connection:	Ø 22 mm



## Holder

Holder for towel heater rail 1900 610, chrome plated. The towel heater rail should be installed with 3 holders. 10 pcs/pack.

Art.No. 1900 615



## Towel radiator

An exclusive Towel radiator for bathrooms and toilets. The Towel radiator is traditionally constructed for practical hanging up of towels and has a high performance heat output.

The installation dimensions of the Towel radiator are designed for caravans, motor homes and boats.

It is produced in steel, powder lacquered in RAL 9016 and equipped with a thermostat for regulation of the temperature. Delivered with adjustable wall holders.

Art.No. 1900 695 without thermostat.

Art.No. 1900 696 with thermostat.

### Technical data

Output:	200 W
Height:	825 mm
Breadth:	300 mm
Assembly depth:	48 - 70 mm
Weight:	5.1 kg
Connection:	Ø 22 mm



## Rubber connection

Rubber connection for heated towel rail 1900 619, and towel radiators 1900 695 and 1900 696.

EPDM 21.4 x 4.25 mm.

Art.No. 1900 609

With prefitted spring band clamps.

Art.No. 1900 837



## Panel radiator

Designed panel radiator in aluminum. Suitable for confined spaces such as toilets, wardrobes, in which it is difficult to install an ordinary convector. Includes bleeder screw on top.

Art.No. 1900 686 500 mm White (RAL 9016)

Art.No. 1900 687 500 mm Silver (RAL 9006)

Art.No. 1900 680 700 mm White (RAL 9016)

Art.No. 1900 681 700 mm Silver (RAL 9006)



### Technical data

Output:	110 / 150 W at $\Delta T = 50^\circ\text{C}$
Height:	500 / 700 mm
Width:	220 mm
Vikt:	1.7 / 2.4 kg
Connection:	$\varnothing 22 \text{ mm}$

## Thermostatic bypass

### Thermostatic bypass two zone comfort

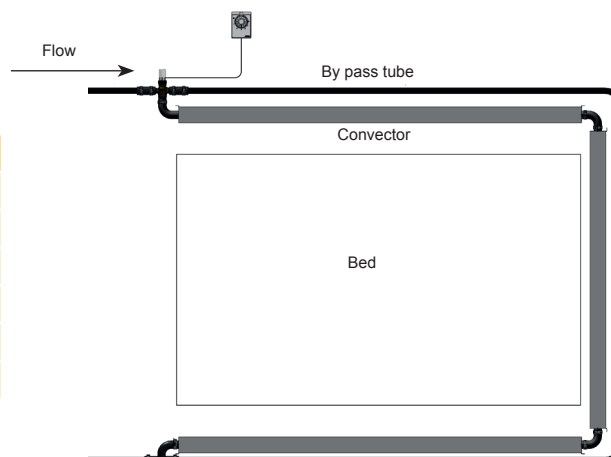
Alde's temperature control allows you to adjust the temperature in a second area, giving two different heating zones in the vehicle. A second thermostat regulates the temperature of the selected area, such as a bedroom, toilet or garage. This is recommended for larger vehicles. Installation is normally carried out by the vehicle manufacturer, but the temperature control can also be retro-fitted.

Art.No. 1900 275



### Technical data

Max storage temperature:	$50^\circ\text{C}$
Length of capillary tube:	2 + 2 m
Material:	Polyamide
Measurement sensor:	24 mm
Weight:	280 g
Connection:	$\varnothing 22 \text{ mm}$



## Booster with fan



### Minibooster with fan

A compact heating package consisting of a specially manufactured aluminum radiator. Two fan speeds.

Art.No. 1900 630

Technical data	
Size:	B 215 x H 140 x D 90 mm
Output:	650 W at $\Delta T = 50\text{ }^{\circ}\text{C}$
Voltage:	10 - 14 V DC
Power consumption:	350 mA
Weight:	0.8 kg
Connection:	$\varnothing 22\text{ mm}$



### Booster with fan

A compact heating package consisting of specially manufactured aluminum convectors. Two fan speeds.

Art.No. 1900 635 with four convectors

Art.No. 1900 641 with six convectors

Technical data	
Size:	B 330 x H 126 x D 151 / 210 mm
Output:	500 / 700 W at $\Delta T = 50\text{ }^{\circ}\text{C}$
Voltage:	10 - 14 V DC
Power consumption:	350 mA
Weight:	1.3 / 2.2 kg
Connection:	$\varnothing 22\text{ mm}$



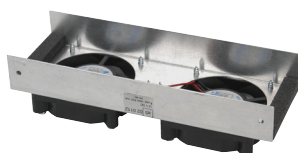
### Fan convector

A compact heating package consisting of a specially manufactured, tightly packed convector with two 12 volt fans. Efficient in such places as drying cabinets.

Two fan speeds.

Art.No. 1900 665

Technical data	
Size:	L 250 x H 80 x D 63 mm
Output:	180 W at $\Delta T = 50\text{ }^{\circ}\text{C}$
Voltage:	10 - 14 V DC
Power consumption:	300 mA
Weight:	0.33 kg
Connection:	$\varnothing 22\text{ mm}$



### Fan package for convectors

The fan package is mounted under a convector where extra heat and increased airflow are needed.

For maximum heating power, the fan package should be mounted on a tightly packed convector. Two fan speeds.

Art.No. 1900 660

Technical data	
Size:	L 175 x H 40 x D 63 mm
Voltage:	10 - 14 V DC
Power consumption:	300 mA



### Switch

Switch for heating booster and fan convector.

Two output settings. Size of hole:  $\varnothing 20\text{ mm}$ .

Art.No. 1900 658

## Heating mat

Floor heating mat for the driver's cab in a motor home or camper. Available adapted to the different chassis.

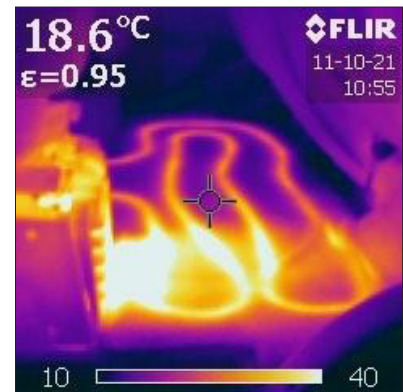
For special adaptations and colours, contact Alde.

Ø 12 mm connection.

Art.No. 1500 330 MB Sprinter

Art.No. 1500 331 Renault Master

Art.No. 1500 332 Fiat, Citroen und Peugeot.



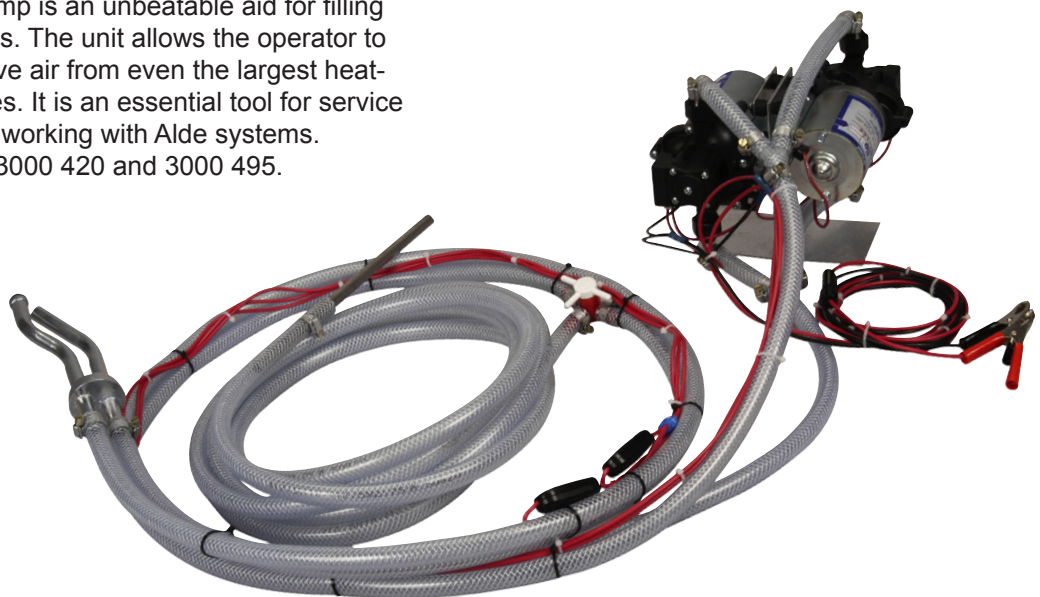
## Service pump kit

### Alde Filler / Bleed Pump Kit

The Alde service pump is an unbeatable aid for filling Alde heating systems. The unit allows the operator to quickly fill and remove air from even the largest heating system in minutes. It is an essential tool for service centres and dealers working with Alde systems.

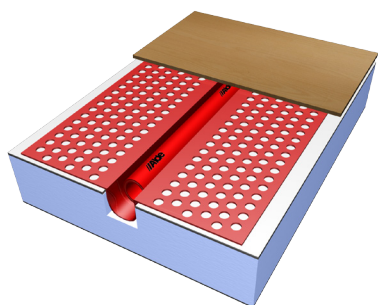
For expansion tank 3000 420 and 3000 495.

Art.No. 1900 811





# Floor heating

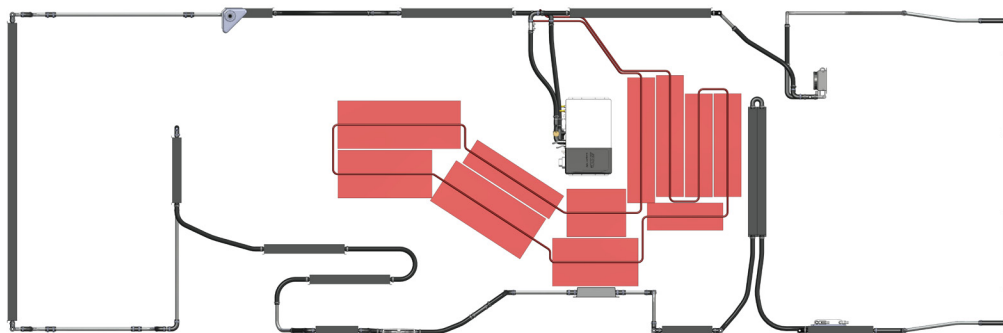


## Floor heating

Floor heating system consisting of "PE-X,-aluminum-, PE-X" heat pipe, Ø 12 x 2 mm, which is flexible and easy to lay in the heating plates.

The thin aluminum heating plates, only 0.3 mm, are perforated so that glue can penetrate through resulting in better adhesion to the surface material.

Shut-off cock 1500 202 is used for easy control of the flow to the underfloor heating. There is a special shunt package available for more advanced control.



## Pipe connection

Pipe connection Ø 22 mm - Ø 12 mm. Length 110 mm.  
Art.No. 1900 188



## Pipe connection

Pipe connection Ø 22 mm - Ø 12 mm. Length 110 mm.  
Art.No. 1900 187



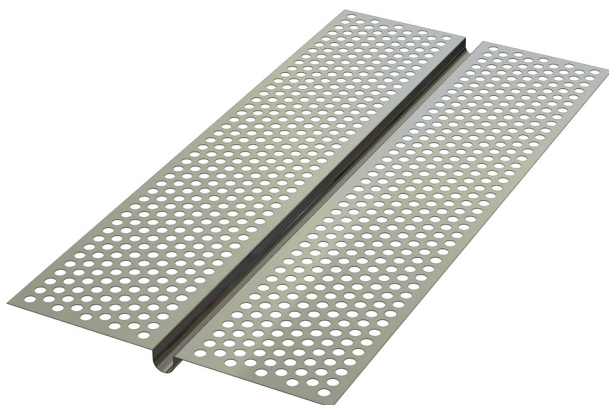
## Pipe connection

Pipe connection Ø 22 mm - Ø 12 mm. Length 150 mm.  
Art.No. 1900 141



## Pipe connection

Pipe connection 90° Ø 22 mm - Ø 12 mm.  
100 x 100 mm.  
Art.No. 1900 140



## Floor plate

Floor plate of aluminum for Ø 12 pipe.

Art.No. 1500 300 1000 x 180 x 0.3 mm

Art.No. 1500 305 1000 x 315 x 0.3 mm

## Pipe

Floor heating pipe Ø 12 mm. "PE-X - aluminum - PE-X".  
100 m/pack.  
Art.No. 1500 100



## Coupling

Straight coupling for Ø 12 mm pipe to coupling  
1500 201. Ø 12 - 15 mm. 10 pcs/pack.  
Art.No. 1500 200



## Coupling

Straight coupling for connection of the floor heating  
system to the central heating system. Ø 22 - 15 mm.  
10 pcs/pack.  
Art.No. 1500 201



## Union coupling

Straight union coupling for Ø 12 mm pipe. 10 pcs/pack.  
Art.No. 1500 203



## Elbow coupling

Elbow coupling for Ø 12 mm pipe. 10 pcs/pack.  
Art.No. 1500 204



## Locking clip

Locking clip for couplings. 100 pcs/pack.  
Art.No. 1500 210 12 mm  
Art.No. 1500 211 15 mm



## Shut-off cock

Shut-off cock for floor heating system for Ø 12 mm pipe.  
50 pcs/pack.  
Art.No. 1500 202



## Shunt package

Using the shunt package the floor heating is run as a separate unit with its own thermostat and circulation pump, where the outgoing temperature of the fluid is controlled. If the floor heating is run as a separate circuit, which is also temperature controlled (fluid temp.), the flow will always be constant, the temperature of the floor surface more even and the convector circuit "undisturbed".

When the convector circuit is not affected the heat output becomes more even and the flow is always constant. Besides, the user of the vehicle can determine the floor temperature to suit their requirements, regardless of the value set on the boiler's thermostat. The boiler and convector circuit need to be converted!

*Floor heating should always be seen as a supplement to enhance comfort and is not intended to be the main source of heating.*

Art.No. 1900 265 Shunt package










Art.No. 3010 423 Control card for circulation pump.



### Technical data

Size:	B 300 x H 148 x D 258 mm
Power consumption:	0.25 – 1.9 A
Connection:	Ø 16 and Ø 22 mm
Weight:	2.0 kg

Assembly parts

	<p><b>Mounting</b> Mounting in aluzinc for convector. Art.No. 1900 126</p>
	<p><b>Mounting</b> Mounting in aluminum for Ø 22 pipe and convectors. Art.No. 1900 146</p>
	<p><b>Support for convectors</b> Centre support for long convectors. Art.No. 1900 147</p>
	<p><b>Floor mounting</b> Floor mounting in aluminum for pipe and convector. 150 mm c/c. Art.No. 1900 168</p>
	<p><b>Clip</b> Clip in stainless steel for Ø 22 mm pipe. 100 pcs/pack. Art.No. 1900 114</p>
	<p><b>Bracket</b> Bracket for rubber hose. 500 pcs/pack. Art.No. 1900 127</p>
	<p><b>Clip</b> Band clip for maximum strength and sealing of rubber fastenings. Art.No. 1900 176    29 x 12 mm. 700 pcs/pack. Art.No. 1900 177    27 x 12 mm. Art.No. 1900 051    21 x 12 mm. 1200 pcs/pack. Art.No. 1900 052    17 x 12 mm.</p>
	<p><b>Pliers</b> Special pliers with locking for band clip. Art.No. 1900 178</p>
	<p><b>Closing pliers</b> Pliers with lock. Used for clamping rubber hoses when mounting and dismantling products on heating systems without draining the glycol mixture. Art.No. 1900 172</p>



## Sealing compound

Loctite 5923 liquid elastic sealing compound.  
Is used on such things as joints between rubber  
connections and pipes. Volume 117 ml.  
Art.No. 1900 174



## Ball valve

Ball valve tap with connections for Ø 22 mm hose.  
Art.No. 1900 087



## Ball valve

Brass ball valve tap ¾" R female.  
Art.No. 1900 159



## Nipple

Nipple for Ø 22 mm hose. ¾" R.  
Art.No. 1900 104



## 3-way valve

3-way valve for bypass in the heating system.  
Used, for example, for heating in the motor home's  
garage section. 3 x ½" R female.  
Art.No. 1900 109



## Nipple

Brass nipple for 3-way valve 1900 109.  
Ø 22 - ½" R male.  
Art.No. 2750 303



## Venting hose

Hose for extension of the venting screw. ⅛" R.  
Length 300 mm.  
Art.No. 1800 300


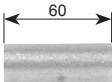
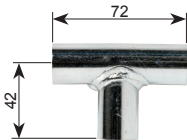
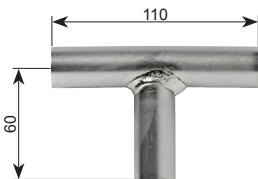
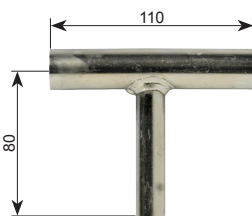
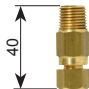
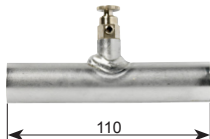
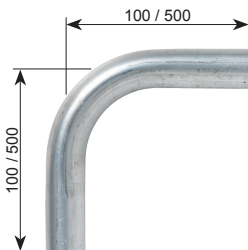
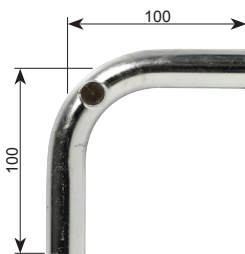


## Air bleed

Air bleed. ⅛" R.  
Art.No. 1900 204



## Assembly parts pipe

	<p><b>Aluminum pipe</b> Aluminum pipe Ø 22x1 mm. Length 5 m. Art.No. 1900 301</p>
	<p><b>Connector pipe</b> Connector pipe in aluminum Ø 22x1 mm. 25 pcs/pack. Art.No. 1900 119</p>
	<p><b>T-pipe</b> T-pipe in galvanized steel pipe. Ø 22 mm. Art.No. 1900 248</p>
	<p><b>T-pipe</b> T-pipe in galvanized steel pipe. Ø 22 mm. Art.No. 1900 148</p>
	<p><b>T-pipe</b> T-pipe in galvanized steel pipe with 3/8"R muff for drain cock. Ø 22 mm. Art.No. 1900 155</p>
	<p><b>Drain cock</b> Drain cock 3/8"R in brass. Art.No. 1900 191</p>
	<p><b>Connector pipe with bleeder screw</b> Pipe in galvanized steel pipe with bleeder screw. Ø 22 mm. Art.No. 1900 125</p>
	<p><b>Pipe bend</b> Pipe bend 90° in galvanized steel pipe Ø 22 mm. Art.No. 1900 164    100 x 100 mm. Art.No. 1900 165    500 x 500 mm.</p>
	<p><b>Pipe bend</b> Pipe bend 90° in galvanized steel pipe with bleeder screw. Ø 22 mm. Art.No. 1900 179</p>

## Rubber hose

Rubber hose. EPDM 21.4 x 4.25 mm.  
Per meter. 25 m/pack.  
Art.No. 1900 002



## Rubber hose

Rubber hose for slide out walls.  
EPDM 21.4 x 4.25 mm.  
Length 1 m.  
Art.No. 1900 213



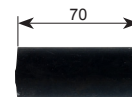
## Rubber joint

Rubber joint EPDM 21.4 x 4.25 mm.  
25 pcs/pack.  
Art.No. 1900 113



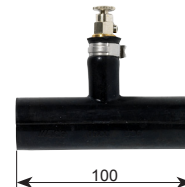
## Rubber joint

Rubber joint EPDM 21.4 x 4.25 mm. 25 pcs/pack.  
Art.No. 1900 112  
  
With mounted band clips.  
Art.No. 1900 528



## Rubber joint

Rubber joint with bleeder screw.  
EPDM 21.4 x 4.25 mm. 25 pcs/pack.  
Art.No. 1900 516  
  
With mounted band clips.  
Art.No. 1900 526



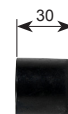
## Rubber joint with non-return valve

In order to counteract auto-circulation in the heating system. Is mounted with the expansion tank.  
EPDM 21.4 x 4.25 mm.  
With mounted band clips.  
Art.No. 3000 529



## Blanking plug

Blanking plug. EPDM 21.4 x 4.25 mm.  
Art.No. 1900 030



## Assembly parts rubber



### Rubber drain

Rubber joint, T-shaped for drain.

EPDM 21.4 x 4.25 mm.

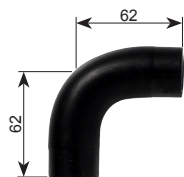
Art.No. 1900 512 Rubber-T. 25 pcs/pack.

Art.No. 1900 513 Band clip for plug.

Art.No. 1900 514 Brass plug.

Complete with band clips and plug. 25 pcs/pack.

Art.No. 1900 518



### Rubber elbow

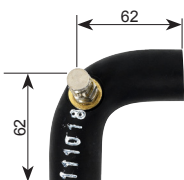
Rubber elbow 90°. EPDM 21.4 x 4.25 mm.

25 pcs/pack.

Art.No. 1900 003

With mounted band clips.

Art.No. 1900 523



### Rubber elbow

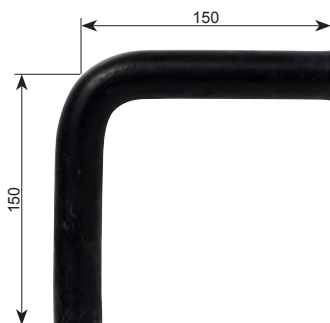
Rubber elbow 90° with bleeder screw.

EPDM 21.4 x 4.25 mm. 25 pcs/pack.

Art.No. 1900 006

With mounted band clips.

Art.No. 1900 520



### Rubber elbow

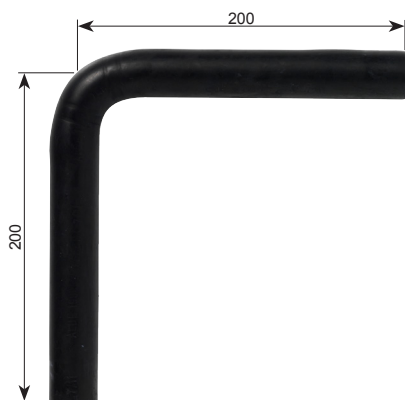
Rubber elbow 90°. EPDM 21.4 x 4.25 mm.

25 pcs/pack.

Art.No. 1900 008

With mounted band clips.

Art.No. 1900 218



### Rubber elbow

Rubber elbow 90°. EPDM 21.4 x 4.25 mm.

25 pcs/pack.

Art.No. 1900 004

With mounted band clips.

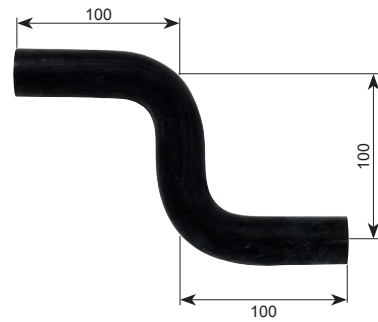
Art.No. 1900 529



## Rubber joint

Rubber joint. S-shaped.  
EPDM 21.4 x 4.25 mm. 25 pcs/pack.  
Art.No. 1900 111

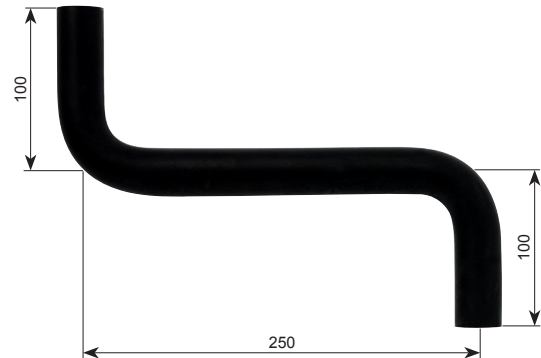
With mounted band clips.  
Art.No. 1900 530.



## Rubber joint

Rubber joint, S-shaped.  
EPDM 21.4 x 4.25 mm. 25 pcs/pack.  
Art.No. 1900 110

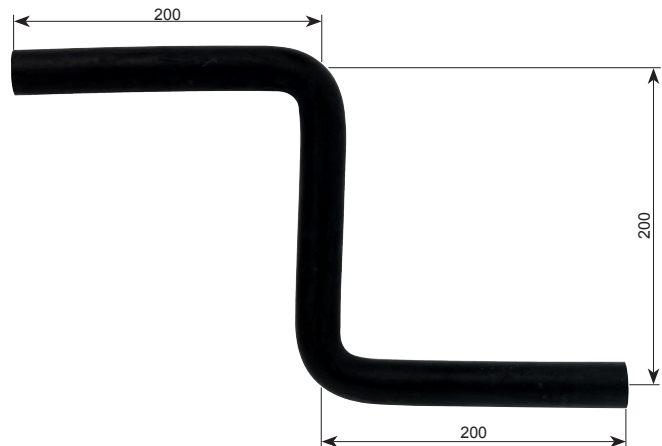
With mounted band clips.  
Art.No. 1900 519



## Rubber joint

Rubber joint, S-shaped.  
EPDM 21.4 x 4.25 mm. 25 pcs/pack.  
Art.No. 1900 580

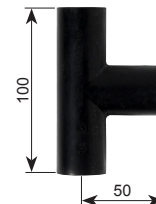
With mounted band clips.  
Art.No. 1900 577



## Rubber joint

Rubber joint, T-shaped. EPDM 21.4 x 4.25 mm.  
25 pcs/pack.  
Art.No. 1900 504

With mounted band clips.  
Art.No. 1900 524



## Assembly parts rubber



### Rubber joint

Rubber joint, T-shaped with bleeder screw.  
EPDM 21.4 x 4.25 mm. 25 pcs/pack.

Art.No. 1900 509

With mounted band clips.

Art.No. 1900 517

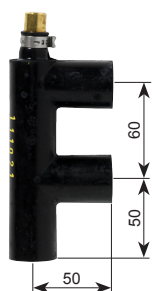


### Rubber joint

Rubber joint, T-shaped with 300 mm hose and bleeder screw. Complete with mounted band clips.

EPDM 21.4 x 4.25 mm.

Art.No. 1900 245



### Rubber joint

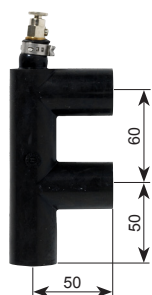
Rubber joint, F-shaped.

EPDM 21.4 x 4.25 mm. 25 pcs/pack.

Art.No. 1900 532

With mounted band clips.

Art.No. 1900 573



### Rubber joint

Rubber joint, F-shaped with bleeder screw.

EPDM 21.4 x 4.25 mm. 25 pcs/pack.

Art.No. 1900 571

With mounted band clips.

Art.No. 1900 557



### Rubber joint

Rubber joint, F-shaped with 300 mm hose and bleeder screw. Complete with mounted band clips.

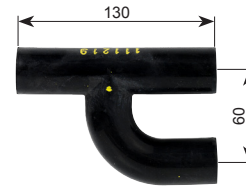
EPDM 21.4 x 4.25 mm.

Art.No. 1900 247

## Rubber joint

Rubber joint, Y-shaped.  
EPDM 21.4 x 4.25 mm. 25 pcs/pack.  
Art.No. 1900 502

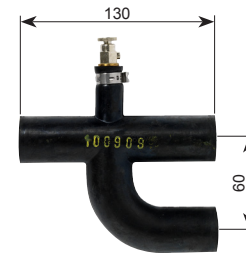
With mounted band clips.  
Art.No. 1900 522



## Rubber joint

Rubber joint, Y-shaped with bleeder screw.  
EPDM 21.4 x 4.25 mm. 25 pcs/pack.  
Art.No. 1900 511

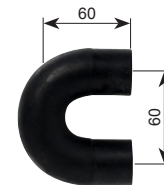
With mounted band clips.  
Art.No. 1900 521



## Rubber joint

Rubber joint, U-shaped.  
EPDM 21.4 x 4.25 mm. 25 pcs/pack.  
Art.No. 1900 505

With mounted band clips.  
Art.No. 1900 525



## Rubber joint

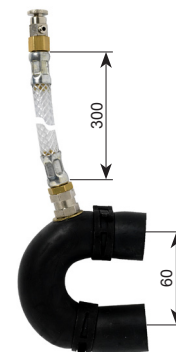
Rubber joint, U-shaped with bleeder screw.  
EPDM 21.4 x 4.25 mm. 25 pcs/pack.  
Art.No. 1900 515

With mounted band clips.  
Art.No. 1900 545



## Rubber joint

Rubber joint, U-shaped with 300 mm hose and bleeder screw. Complete with mounted band clips.  
EPDM 21.4 x 4.25 mm.  
Art.No. 1900 246



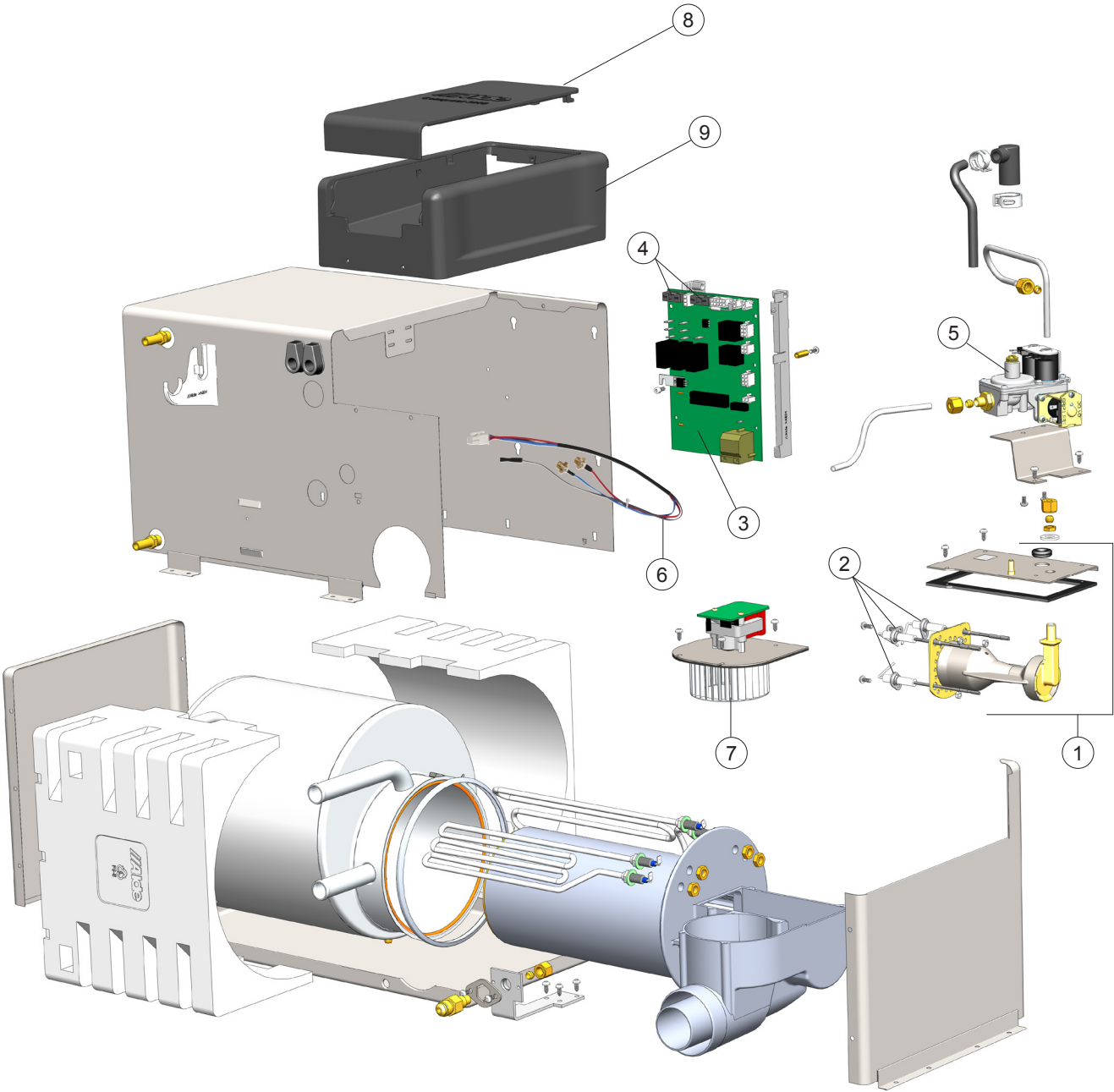




# Spare parts

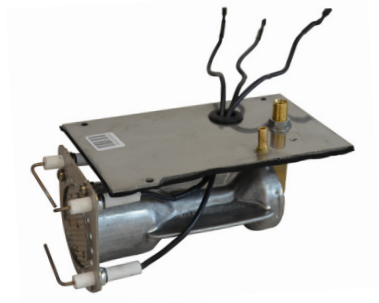


Spare parts for Compact 3010



## Burner

Burner complete, including spark plug and sensor.  
Art.No. 3010 620



①

## Ignition set

Ignition set consisting of two spark plugs and sensor.  
Art.No. 3010 306



②

## Circuit board

Circuit board with ignition transformer.  
Art.No. 3010 624



③

## Fuse

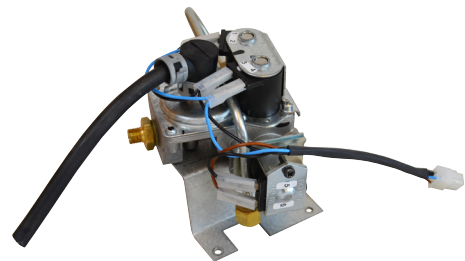
Fuse 3.15 A for Circuit board.  
Art.No. 3010 339



④

## Solenoid valve

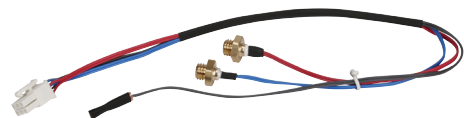
Solenoid valve complete.  
Art.No. 3010 622



⑤

## Sensors

Sensors for thermostat, overheating protection and domestic hot water.  
Art.No. 3010 305



⑥

## Combustion fan

Fan complete 9 V for all models of Compact 3010.  
Art.No. 3000 452



⑦

## Spare parts for Compact 3010

⑧



### Service hatch lid

Service hatch lid for Compact 3010.

Art.No. 3010 149

⑨



### Service hatch

Service hatch for Compact 3010.

Art.No. 3010 148



### Circulation pump 12 V PWM

Fits circulation pump 3010 514.

Speed regulated from touch panel.

Art.No. 3010 512



### Circulation pump 12 V

Fits circulation pump 3010 508 and 3010 510.

Speed regulated on circulation pump.

Art.No. 3010 511



### Automatic venting valve

Automatic venting valve with hose.

Art.No. 1900 542



### Wall chimney cap

Wall chimney cap for 3010 170.

Art.No. 3000 555



### Front cover

Front cover for Control panel.

Art.No. 3010 616 Silver

Art.No. 3010 618 Black



### Emergency over-ride

Is used to override-start the boiler without using the control panel.

Art.No. 3010 218



[illegible]

# Alde Compact 3010 No. 100,000



## A new milestone for Alde

In 2012 Alde International Systems AB celebrates an impressive record. Since its launch in 2006, we have produced 100,000 heating systems of the model Alde Compact 3010.

In recent years Alde has seen strong growth and now supplies all the leading manufacturers in Europe with heating comfort of the highest class.



## Alde Corp

**Address:**  
4017 NE 112th Ave D-5  
Vancouver, WA 98682

**Tel:**  
360 608 4803

**Fax:**  
360 718 7077

**Site:**  
[www.alde.us](http://www.alde.us)

**E-mail:**  
[info@alde.us](mailto:info@alde.us)



## Alde International Systems AB

**Postal address:**  
Box 11066  
291 11 Färlöv  
Sweden

**Visit / delivery address:**  
Wrangels Allé 90  
291 75 Färlöv  
Sweden

**Phone:**  
+46 44 712 70

**Fax:**  
+46 44 718 48

**Webb site:**  
[www.alde.se](http://www.alde.se)

**E-mail:**  
[info@alde.se](mailto:info@alde.se)