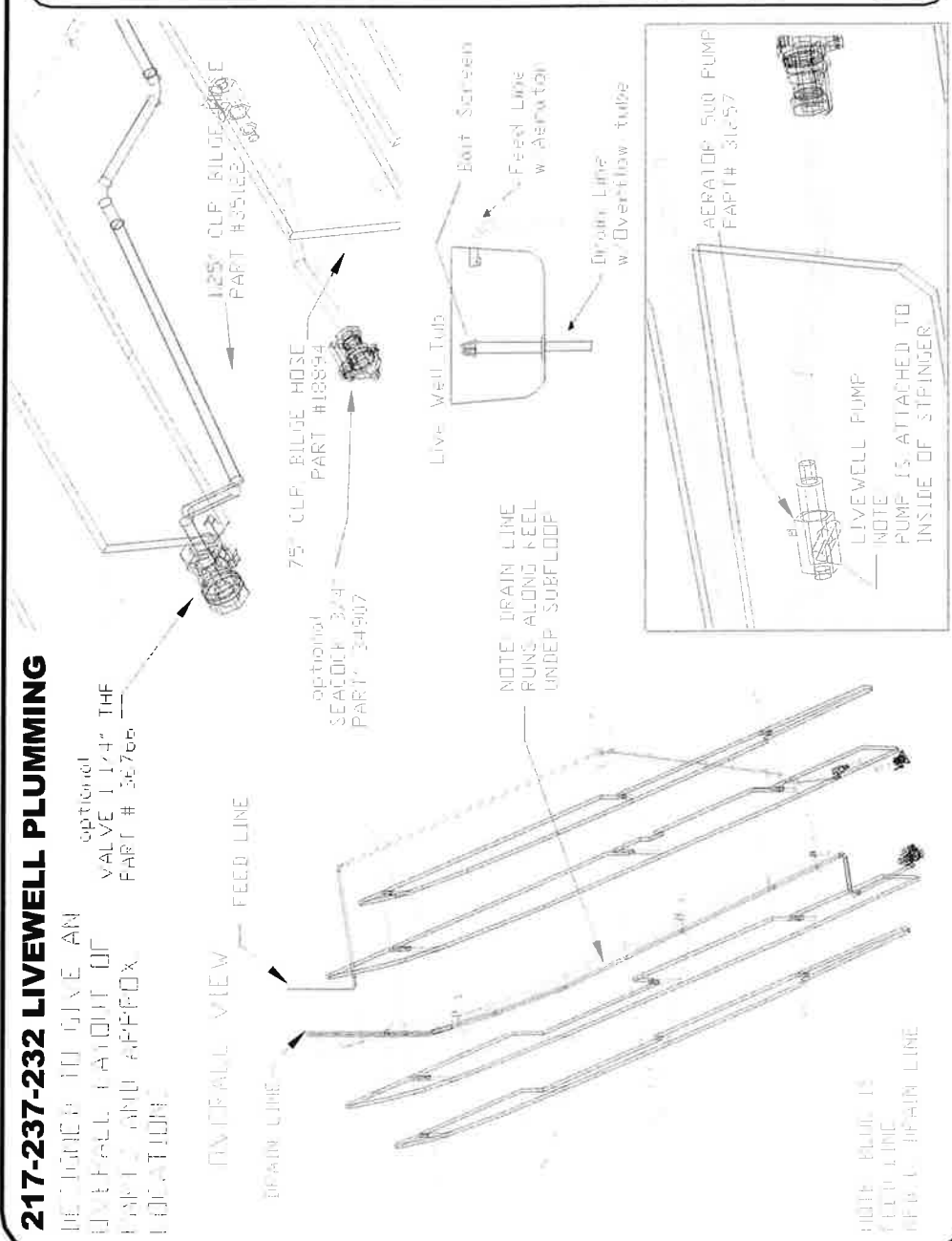


#Name?

217-237-232 LIVEWELL PLUMBING

BE ATTACHED TO LIVE AN
LIVEWELL LOCATION OF
PARTS AND APPROX
LOCATION



General Notes

CLAMP MUST BE USED AT EVERY FITTING

To activate live well, turn on live well switch or ACC switch (located on helm)

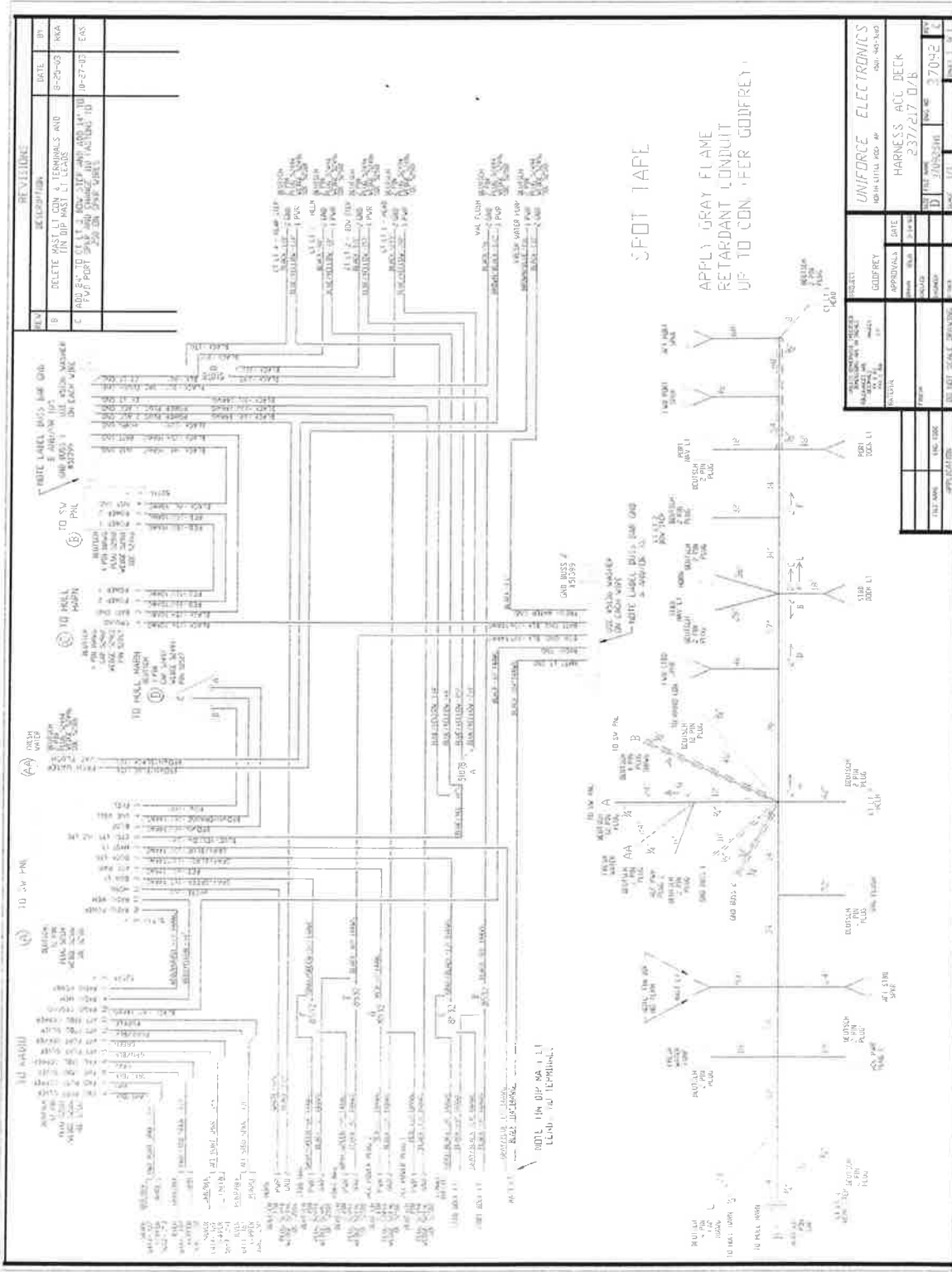
Part Name	Part Number

GODFREY MARINE

Project Name
LIVEWELL PLUMBING
217-237-4

Scale
11-2-23
JDM

#Name?



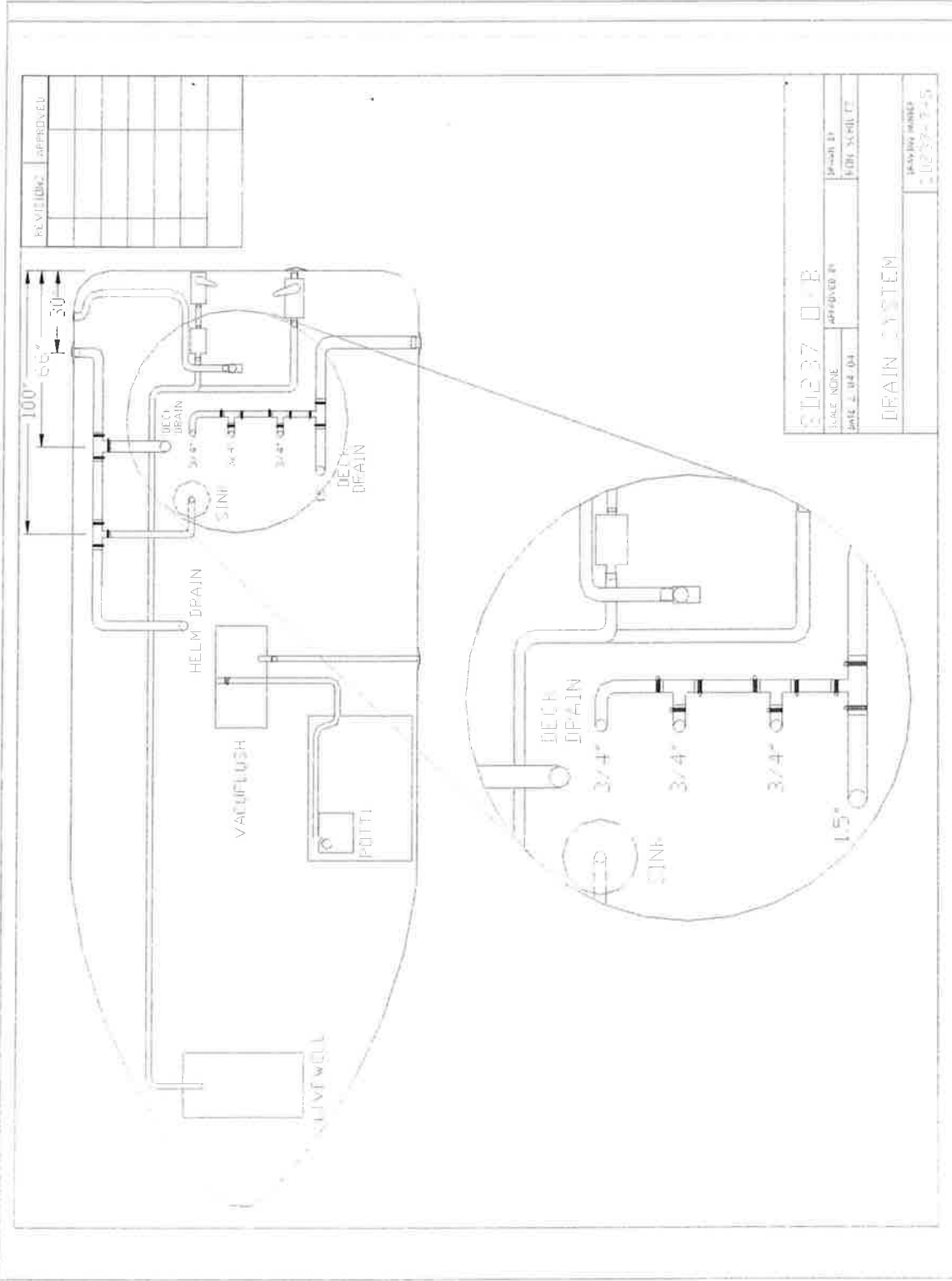
REV.	DESCRIPTION	DATE	BY
1	DELETE WIRE 11 CON. 1 TERMINALS AND 11 IN DIP MAST 1 LEADS	8-25-68	RGA
2	ADD 24- TO GLE 1 20-STEP WIRE AND 24- TO 25- IN SWP WIRE	10-27-68	EHS

REVISION		APPROVALS	
NO.	DATE	BY	DATE
1			
2			

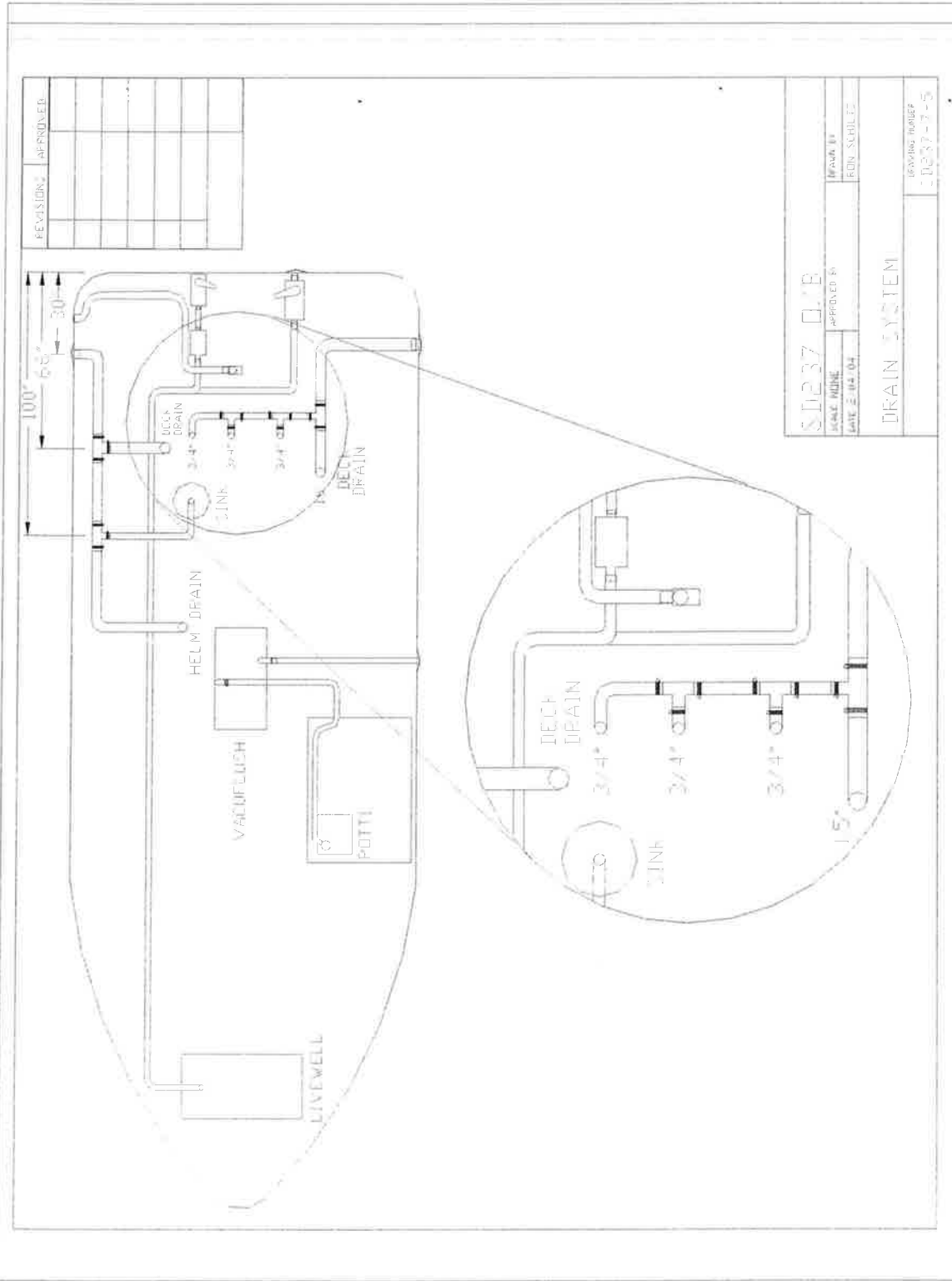
PROJECT	GODFREY
DATE	237/217 0/B
APP. NO.	D 349523H
REV. NO.	27042

UNIFORME ELECTRONICS	
HARNESS ACC. DECK	
DATE	237/217 0/B
REV. NO.	27042

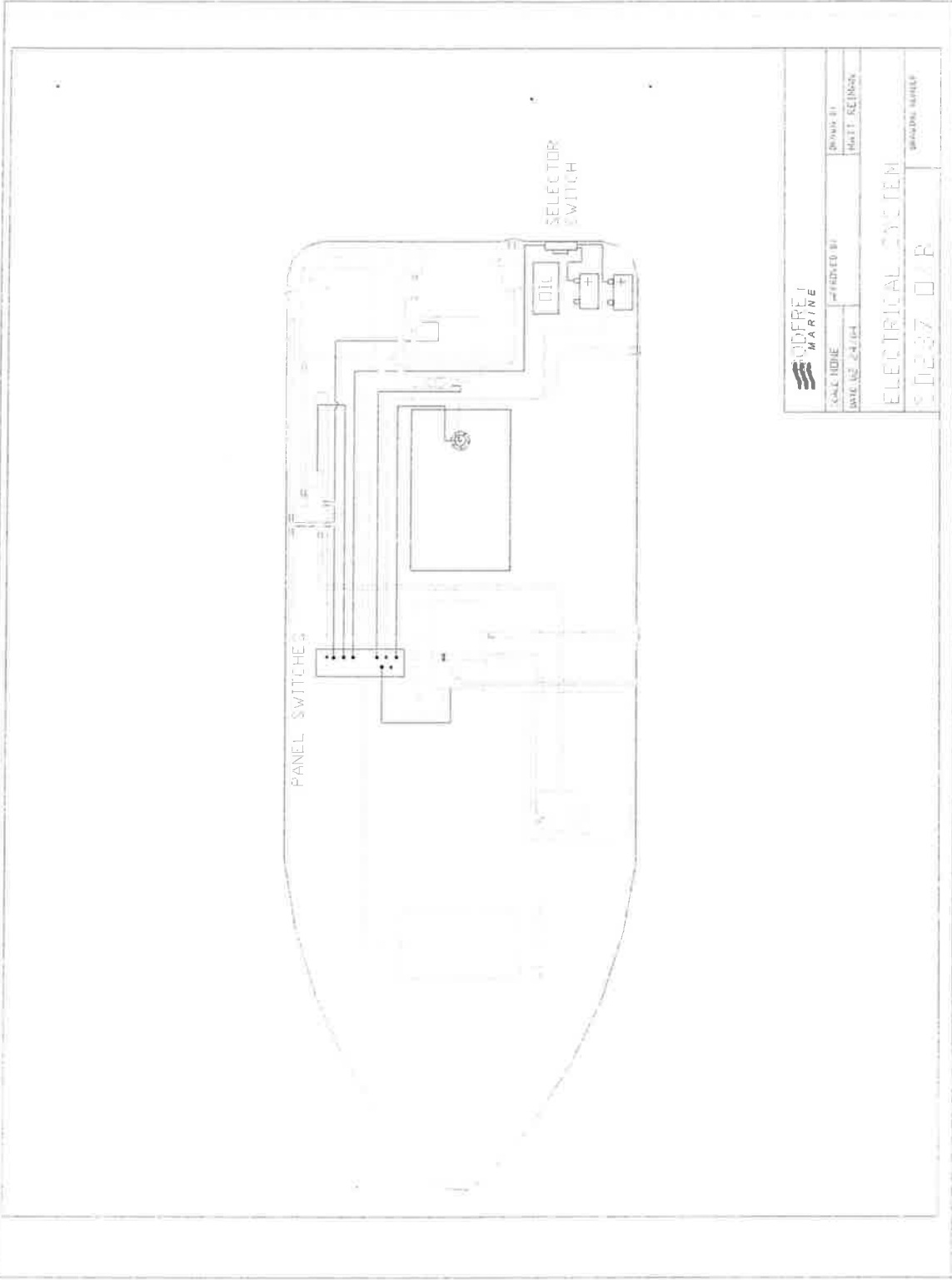
#Name?




#Name?

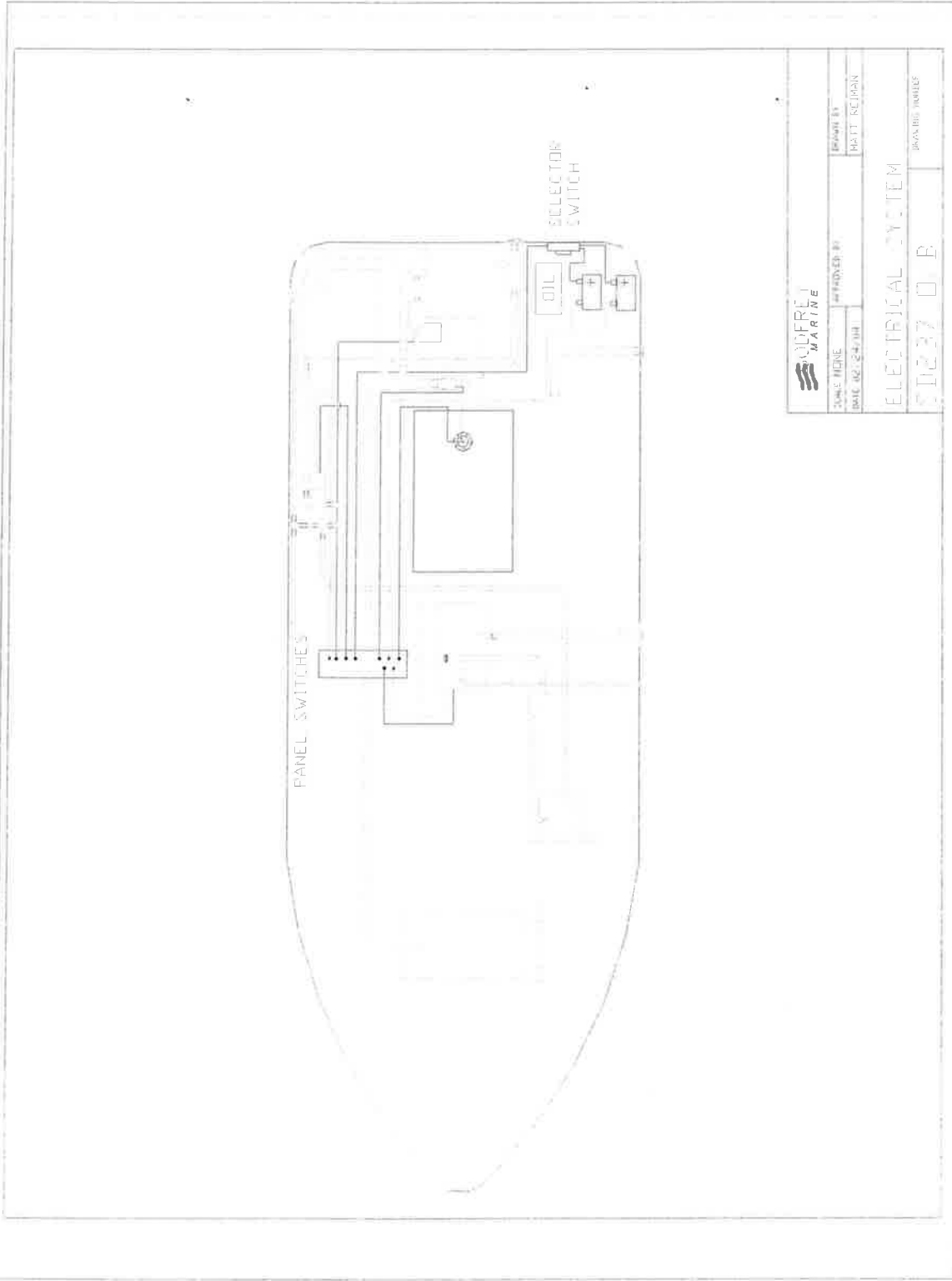


#Name?



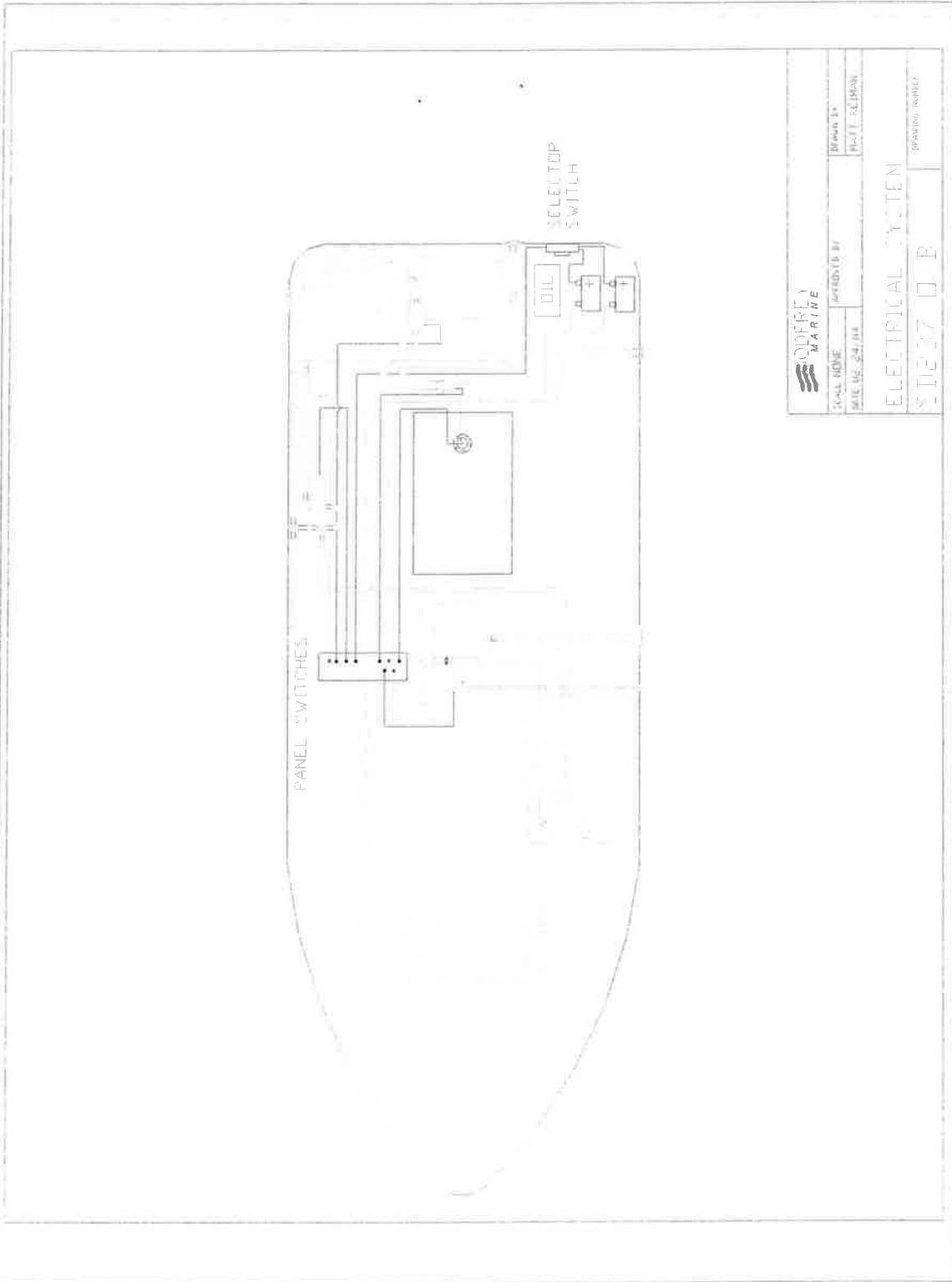
 ODFREY MARINE		DESIGN BY	DAVID BIR
CABLE NUMBER	PROJECT NO.	DRAWN BY	MATT REYNOLDS
DATE: 02-24-04			
ELECTRICAL SYSTEM			DRAWING NUMBER
80237 01B			

#Name?



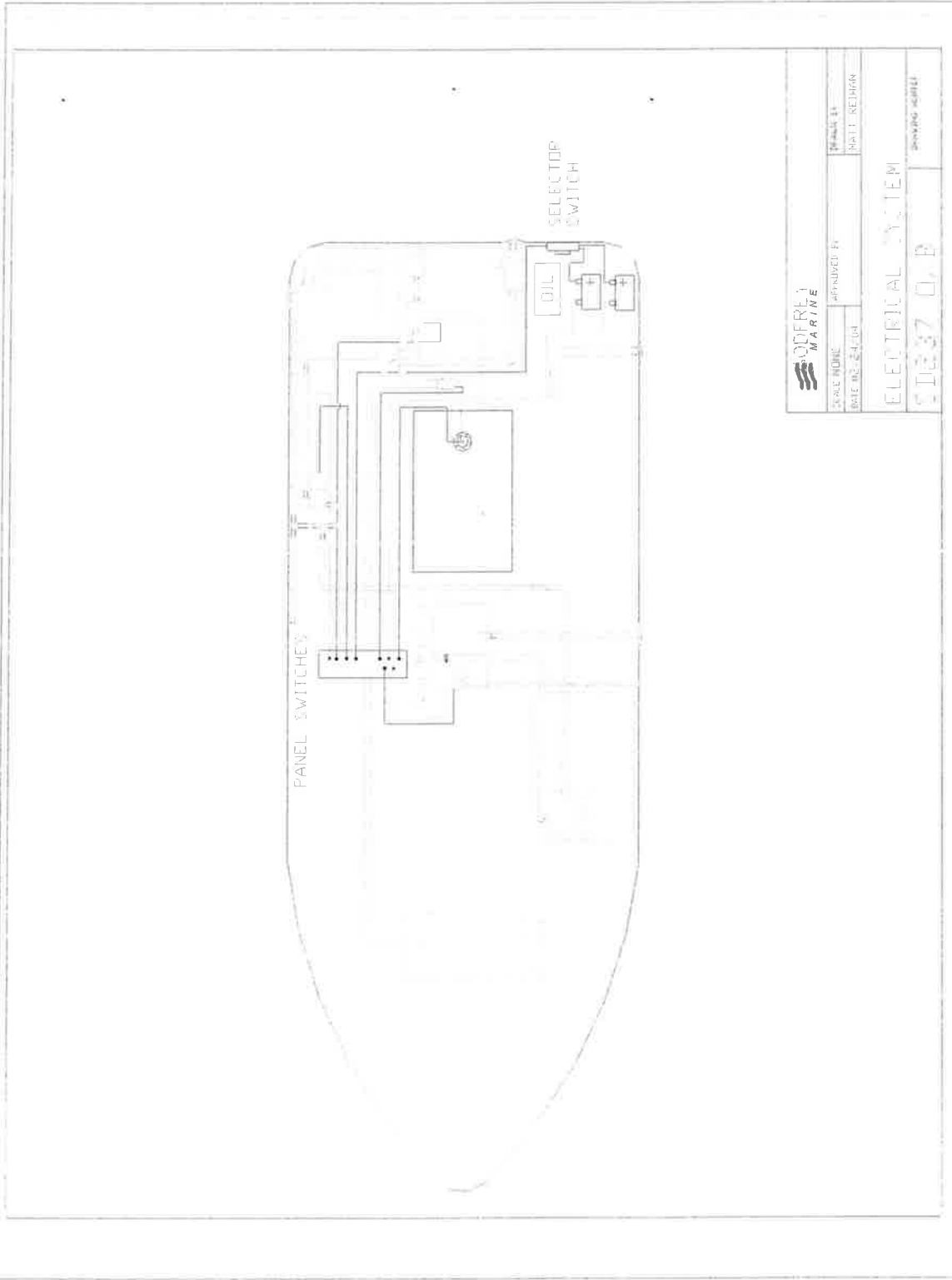
DESIGNED BY	MATT NEUMAN
DATE DESIGNED	
ELECTRICAL SYSTEM	
SIBER D.B.	
DRAWING NUMBER	

#Name?



	DESIGNED BY	DATE
	PAUL SELMAN	24/14
ELECTRICAL SYSTEM		DRAWING NUMBER
S1027 D B		

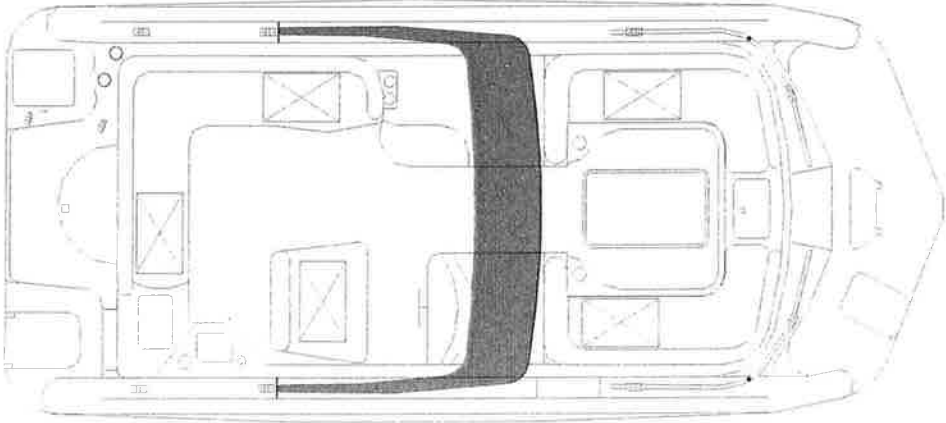
#Name?



SCALE NONE	APPROVED BY
DATE 02-24-14	MATT REDMAN
ELECTRICAL SYSTEM	
SD337 0, B	
DRAWING NUMBER	

#Name?

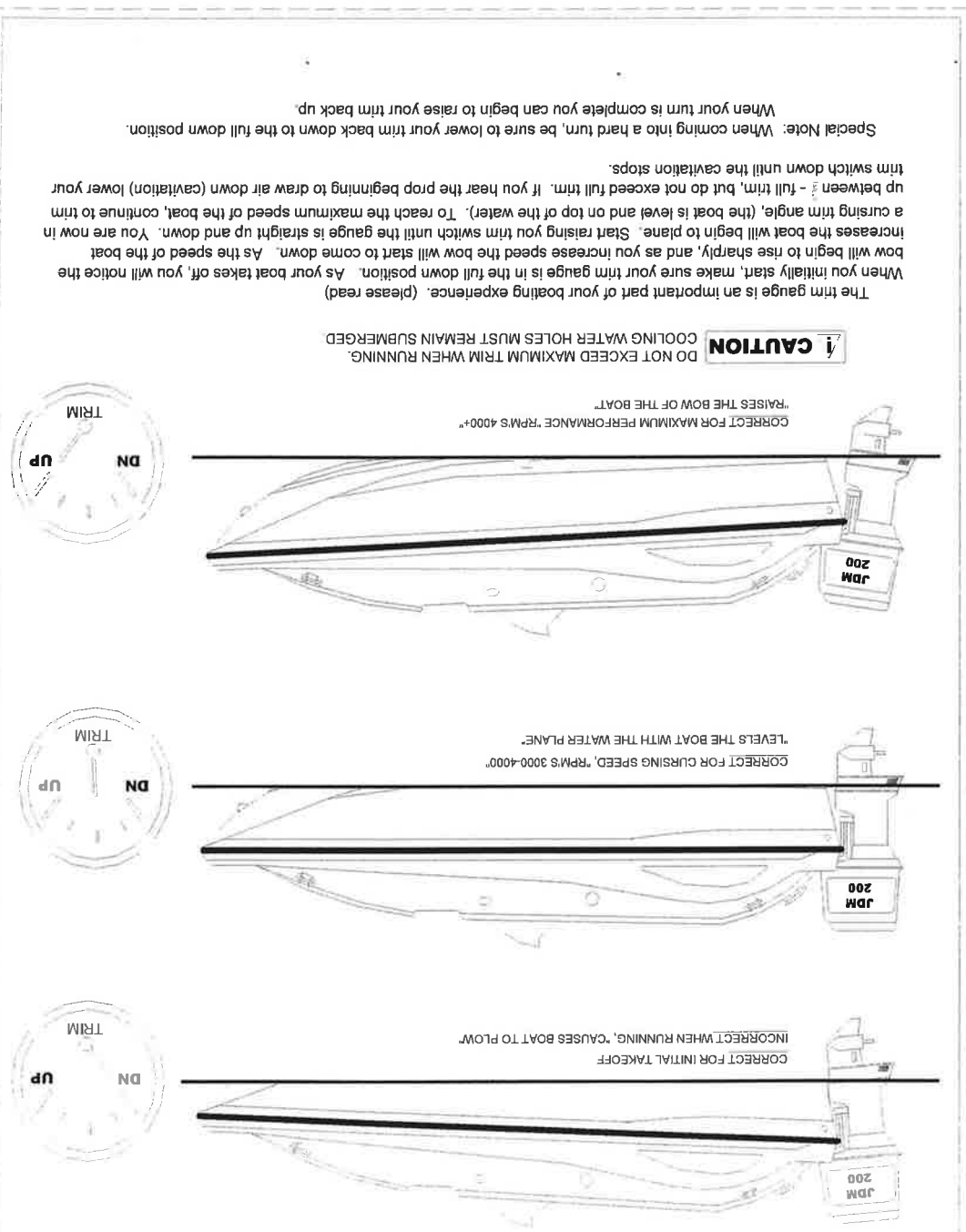
BALANCED LOADING



— PERSON —

BALANCED LOADING OF PERSONS IN A BOAT CAN GREATLY AFFECT YOUR BOATING EXPERIENCE. BE SURE ALL PASSENGERS ARE SEATED PROPERLY INSIDE RAIL, GATES OR GUNWALE. THE LOADING OF PERSONS ALL TO ONE SIDE CAN CAUSE YOUR BOAT TO LIST (LEAN TO) ONE SIDE OR THE OTHER. IN SOME ADVERSE CONDITIONS IT COULD ALSO CAUSE FOR UNSAFE BOATING PRACTICES. AS CAPTAIN PLEASE REMEMBER TO DISPERSE YOUR LOAD EVENLY. ALSO, PASSENGERS SHOULD REMAIN SEATED IN THE PROPER SEATS WHENEVER THE BOAT IS RUNNING AT SPEEDS GREATER THAN TROLLING MOTOR SPEED.

TRIM GAUGE



CAUTION DO NOT EXCEED MAXIMUM TRIM WHEN RUNNING. COOLING WATER HOLES MUST REMAIN SUBMERGED.

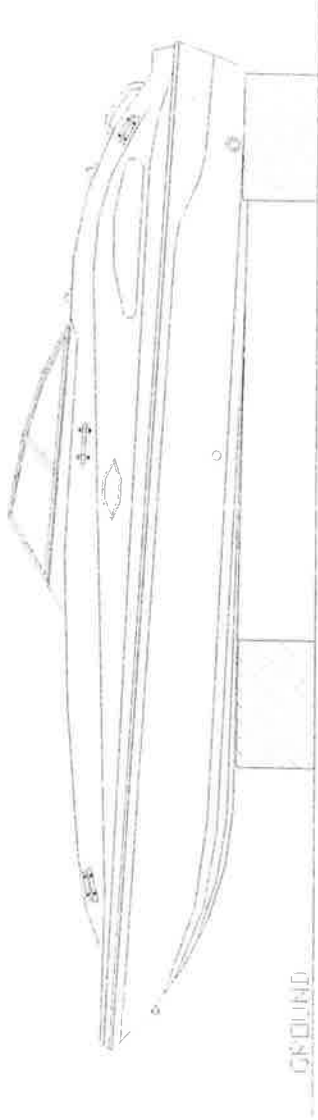
The trim gauge is an important part of your boating experience. (please read) When you initially start, make sure your trim gauge is in the full down position. As your boat takes off, you will notice the bow will begin to rise sharply, and as you increase speed the bow will start to come down. As the speed of the boat increases the boat will begin to plane. Start raising you trim switch until the gauge is straight up and down. You are now in a cruising trim angle, (the boat is level and on top of the water). To reach the maximum speed of the boat, continue to trim up between 1/2 - full trim, but do not exceed full trim. If you hear the prop beginning to draw air down (cavitation) lower your trim switch down until the cavitation stops.

Special Note: When coming into a hard turn, be sure to lower your trim back down to the full down position. When your turn is complete you can begin to raise your trim back up.

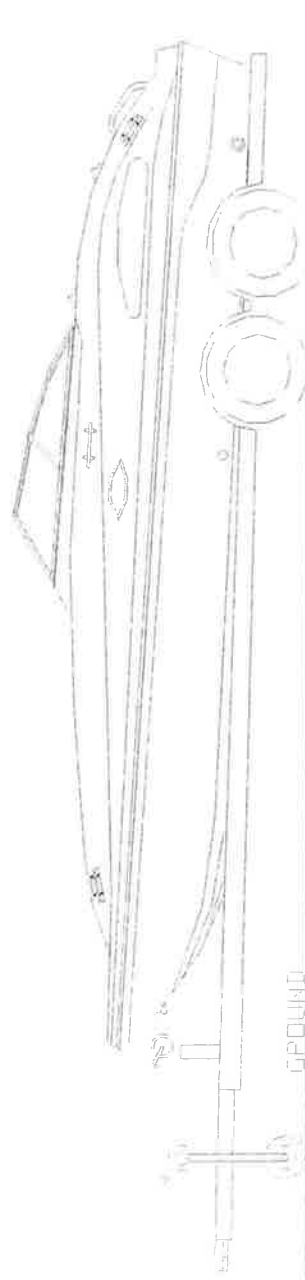
#Name?

#Name?

BOAT STORAGE



Foam blocks or concert blocks may be used, but make sure they are well padded to protect the fiberglass from chipping or cracking.



If storing your boat on the ground or on a trailer, be sure the nose of your boat is above the stern. Also, make sure your garboard drain (located on the bottom stern of the transom) has been removed. See STORAGE in section 6-4, for further instruction on long term storage of your boat.

#Name?

VACUUM FLUSH OPTION

BEFORE OPERATION, PLEASE MAKE SURE THE FRESH WATER TANK IS FILLED.

SOME OF OUR BOATS ARE EQUIPPED WITH THE 7 GALLON TANK, VACUUM FLUSH TOILET. TO OPERATE, SIMPLY TURN ON SWITCH (LOCATED ON WALL NEAR THE TOILET). YOU SHOULD HEAR THE PUMP TURN ON FOR APPROX. 1 - 2 MINUTES, THEN TURN OFF AUTOMATICALLY. NOW YOUR TOILET IS READY FOR USE.

ONCE YOU FLUSH YOUR TOILET THE PUMP WILL AUTOMATICALLY COME ON AGAIN TO ENERGIZE THE SYSTEM FOR THE NEXT TIME. PERIODICALLY, THE PUMP MAY COME ON THROUGH OUT THE DAY, TO MAINTAIN THE PROPER VACUUM PRESSURE INSIDE THE HOLDING TANK.

AT THE END OF THE DAY, SIMPLY TURN OFF THE SWITCH.

TO EMPTY WASTE TANK, JUST PULL UP TO THE NEAREST PUMP OUT STATION. REMOVE CAP MARKED "WASTE" LOCATED ON THE PORT SIDE OF YOUR BOAT, AND FOLLOW INSTRUCTION LOCATED AT PUMP OUT STATION.