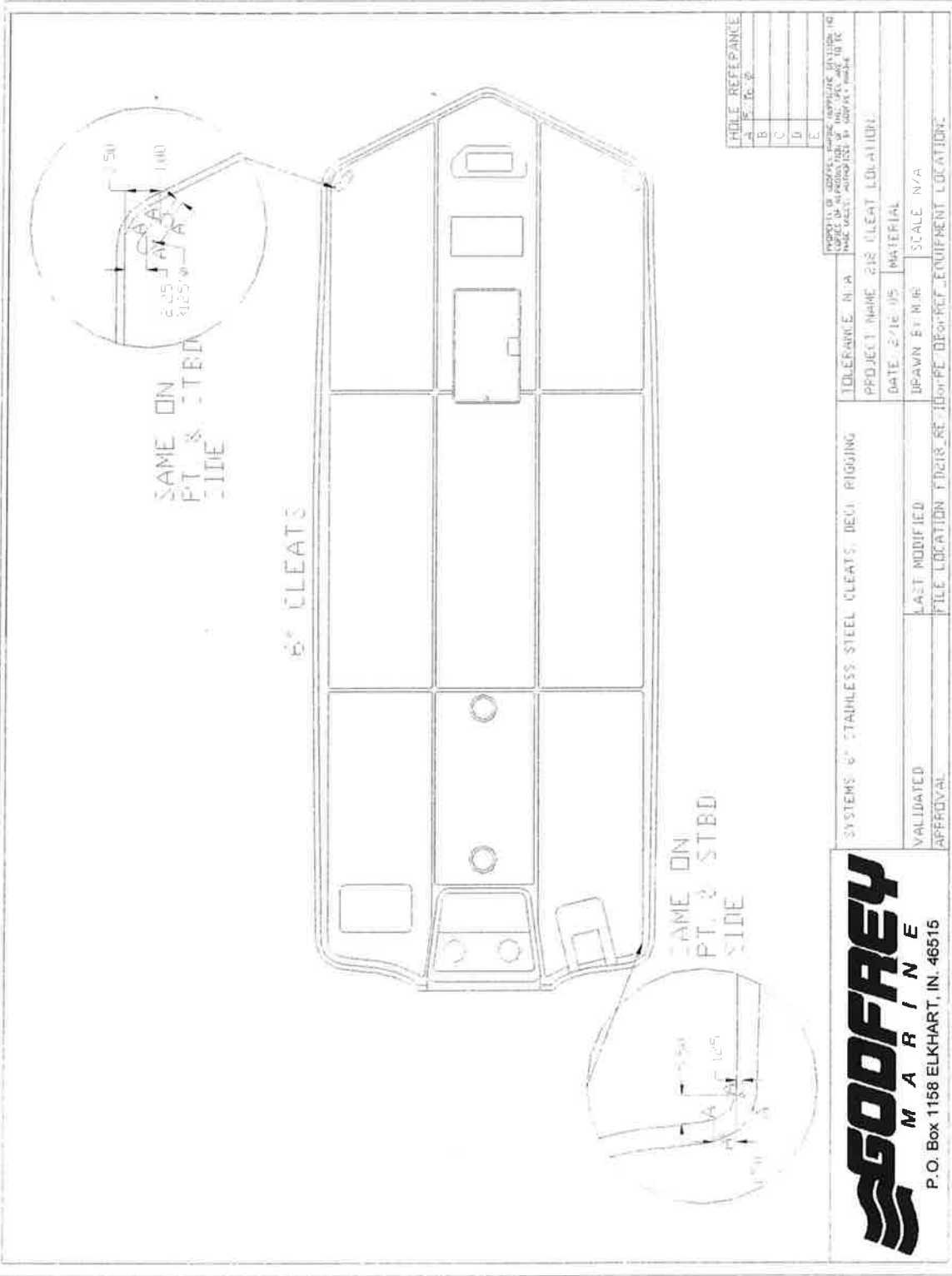


#Name?



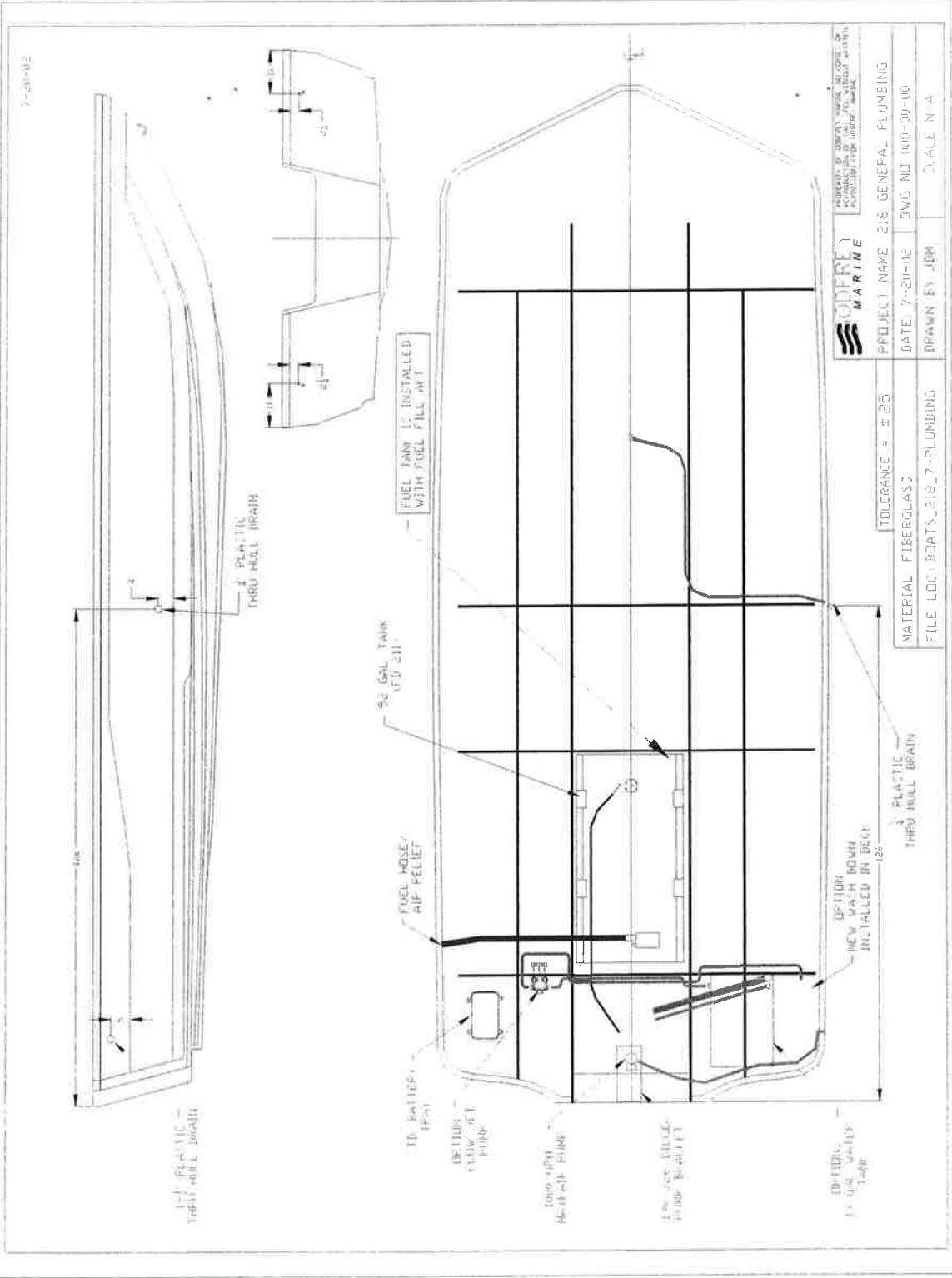
HOLE REFERENCE	
A	TO B
B	
C	
D	
E	

PROPERTY OR COMPANY: GODFREY, MARRIOTT APPLICABLE DIVISION (40)	
CAPABLE OF MANUFACTURING OR NOT: YES, NO OR TO BE	
MATERIAL: ALUMINUM OR OTHER: NONE	
SYSTEMS: 6" STAINLESS STEEL CLEATS, DEVI RIGGING	TOLERANCE: N/A
PROJECT NAME: 218 CLEAT LOCATION	DATE: 2/12/05
VALIDATED	DRAWN BY: N/A
APPROVAL	SCALE: N/A
FILE LOCATION: F:\218.RET\HOME DEPT REF. EQUIPMENT LOCATION	

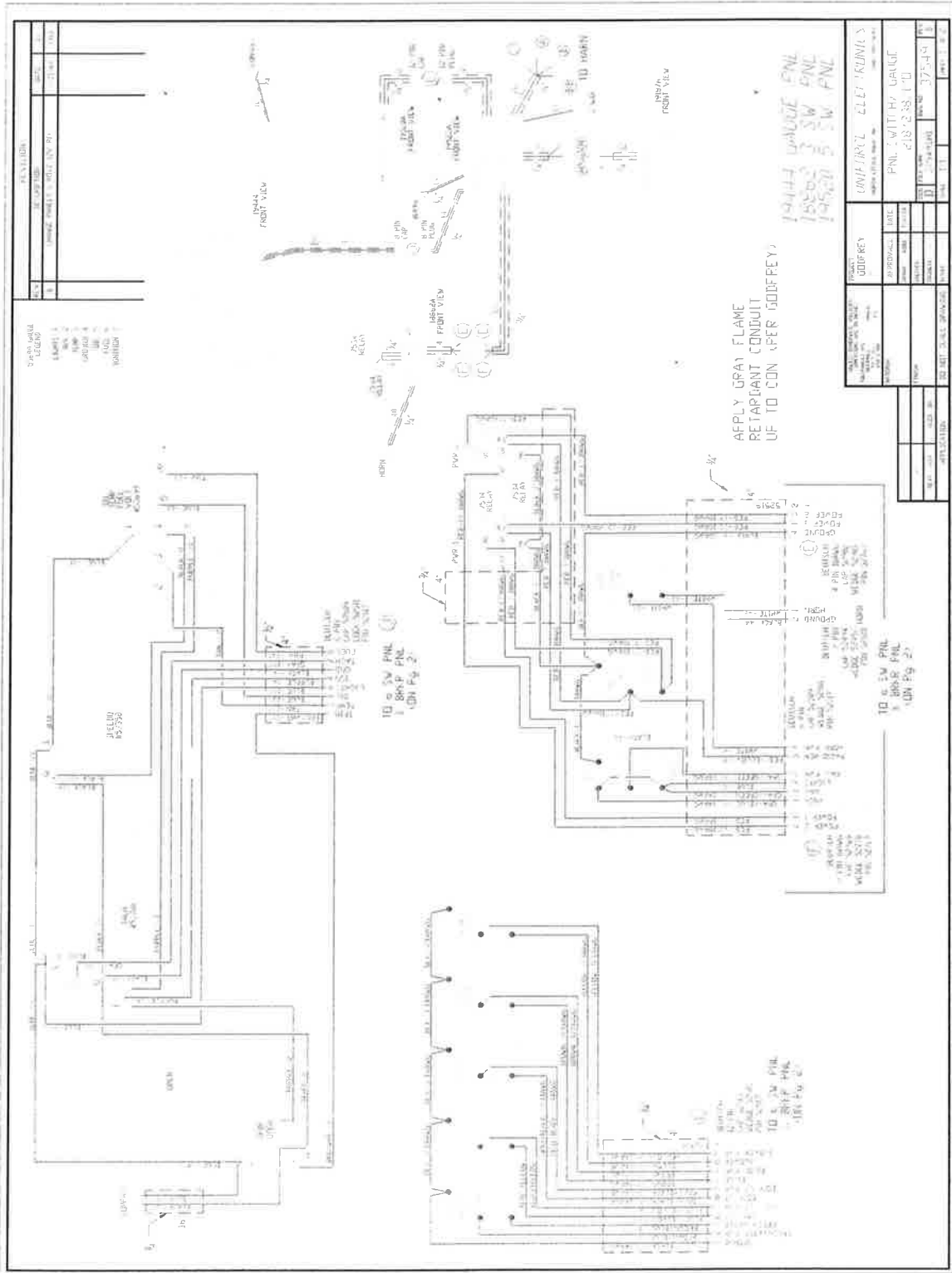
GODFREY
MARRIOTT

P.O. Box 1158 ELKHART, IN. 46515

#Name?



#Name?



NO.	REVISION	DATE	BY
1	ISSUED	11/14/83	...
2
3
4
5
6
7

SYMBOLS
 1. LIMIT 1
 2. LIMIT 2
 3. LIMIT 3
 4. LIMIT 4
 5. LIMIT 5
 6. LIMIT 6
 7. POSITION 1

UNIFORMITY		UNIFORMITY	
APPROX.	DATE	APPROX.	DATE
...
...
...
...

NO.	REVISION	DATE	BY
1	ISSUED	11/14/83	...
2
3
4
5
6
7

PNL 1 WITH GAUGE
 218 2 88 1 1 1
 375 4 4 1 1
 375 4 4 1 1

APPLY GRAY FLAME
 RETARDANT CONDUIT
 UP TO CON. AFTER GOODFREY

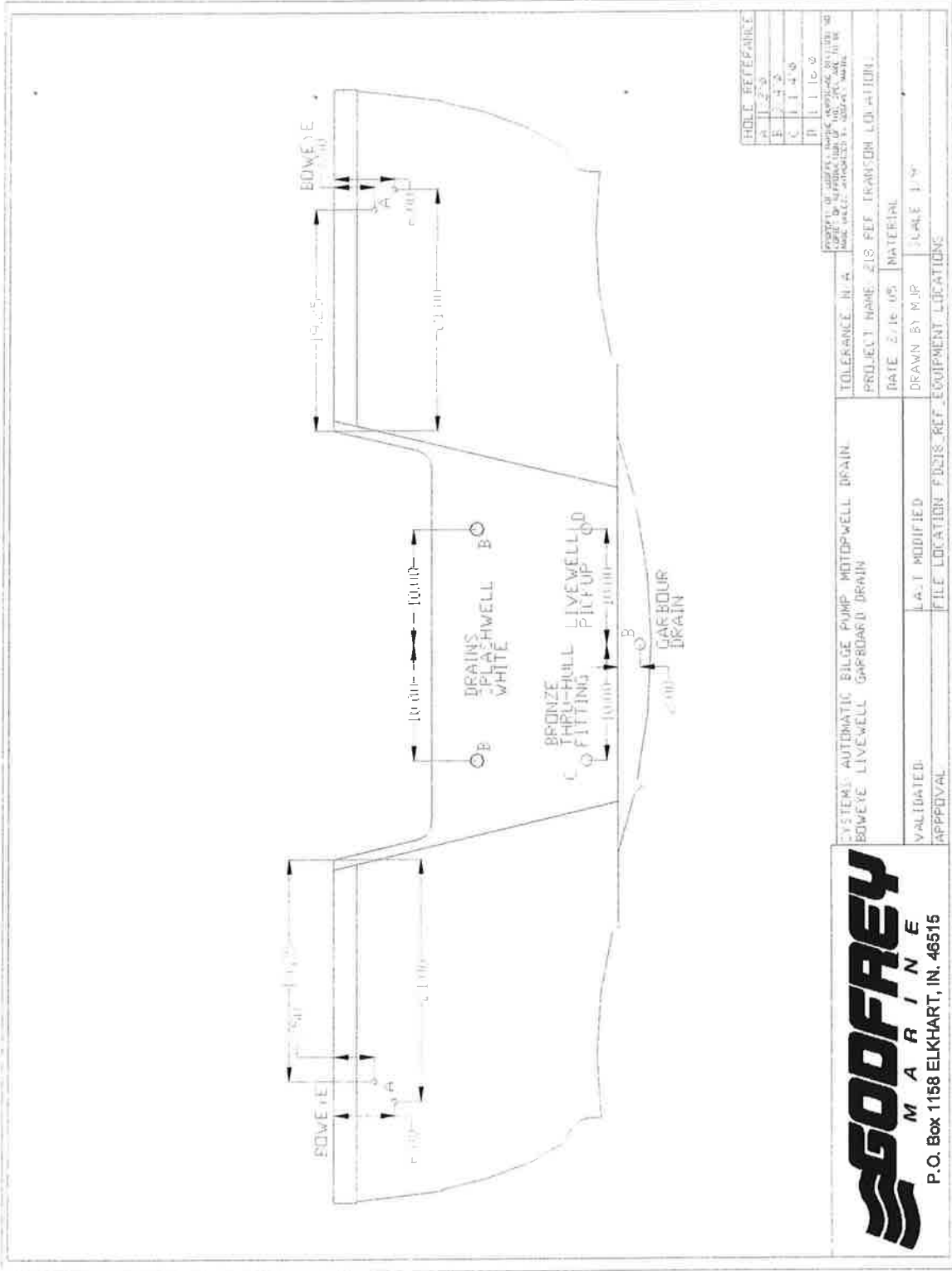
TO 6 2M PNL
 1 888P PNL
 CON FIG. 2

TO 6 2M PNL
 1 888P PNL
 CON FIG. 2

REMOVE 4 PIP FROM
 LSP FROM 400 550
 1000 W/4M 5000
 PNL 5015

REMOVE 4 PIP FROM
 LSP FROM 400 550
 1000 W/4M 5000
 PNL 5015

#Name?



GODFREY
M A R I N E
P.O. Box 1158 ELKHART, IN. 46515

SYSTEMS: AUTOMATIC BILGE PUMP MOTORWELL DRAIN.
BOWEYE LIVWELL GASBOUR DRAIN

VALIDATED: L.A.T. MODIFIED
APPROVAL: FILE LOCATION F0218 REF. EQUIPMENT LOCATIONS

TOLERANCE: N.A.
PROJECT NAME: 218 FEF DRAGON LOUATION.
DATE: 2/16/05 MATERIAL: L-ALUM 1.5"
DRAWN BY: MJP

PROPERTY OF GODFREY MARINE EQUIPMENT CO. ALL RIGHTS RESERVED. MADE IN U.S.A. PATENTED IN U.S. & CANADA.

