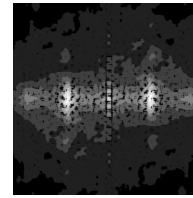
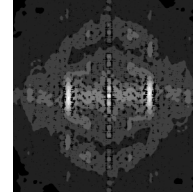
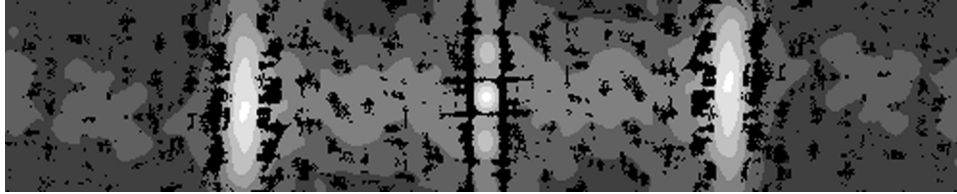


The black partitions between the white intervals may be visible, but they need to be explained, equal in value, because otherwise they would change the rhythm. When the intervals of a rhythmic assembly are separated by the white intervals of a rhythmic assembly, the rhythmic composition of the white shape is the result of the combination of the black shape and vice versa. The black shape of writing is determined and regulated only by the combination of letters, there is no single measure of their size and they follow almost instinctively from the black strokes which build up each letter. This is why I place so much emphasis on the white shape in the word.



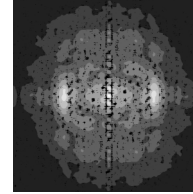
bauer bodoni

The black partitions between the white intervals may be visible, but they need to be explained, equal in value, because otherwise they would change the rhythm. When the intervals of a rhythmic assembly are separated by the white intervals of a rhythmic assembly, the rhythmic composition of the white shape is the result of the combination of the black shape and vice versa. The black shape of writing is determined and regulated only by the combination of letters, there is no single measure of their size and they follow almost instinctively from the black strokes which build up each letter. This is why I place so much emphasis on the white shape in the word.



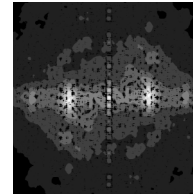
memphis medium

The black partitions between the white intervals may be visible, but they need to be explained, equal in value, because otherwise they would change the rhythm. When the intervals of a rhythmic assembly are separated by the white intervals of a rhythmic assembly, the rhythmic composition of the white shape is the result of the combination of the black shape and vice versa. The black shape of writing is determined and regulated only by the combination of letters, there is no single measure of their size and they follow almost instinctively from the black strokes which build up each letter. This is why I place so much emphasis on the white shape in the word.



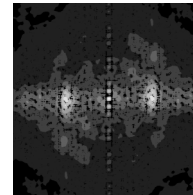
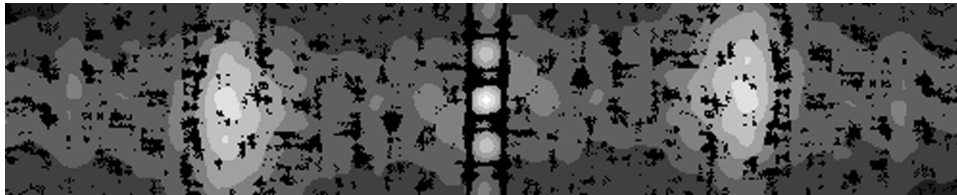
meta bold

The black partitions between the white intervals may be visible, but they need to be explained, equal in value, because otherwise they would change the rhythm. When the intervals of a rhythmic assembly are separated by the white intervals of a rhythmic assembly, the rhythmic composition of the white shape is the result of the combination of the black shape and vice versa. The black shape of writing is determined and regulated only by the combination of letters, there is no single measure of their size and they follow almost instinctively from the black strokes which build up each letter. This is why I place so much emphasis on the white shape in the word.



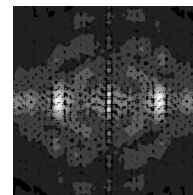
minion

The black partitions between the white intervals may be visible, but they need to be explained, equal in value, because otherwise they would change the rhythm. When the intervals of a rhythmic assembly are separated by the white intervals of a rhythmic assembly, the rhythmic composition of the white shape is the result of the combination of the black shape and vice versa. The black shape of writing is determined and regulated only by the combination of letters, there is no single measure of their size and they follow almost instinctively from the black strokes which build up each letter. This is why I place so much emphasis on the white shape in the word.



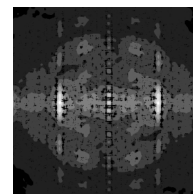
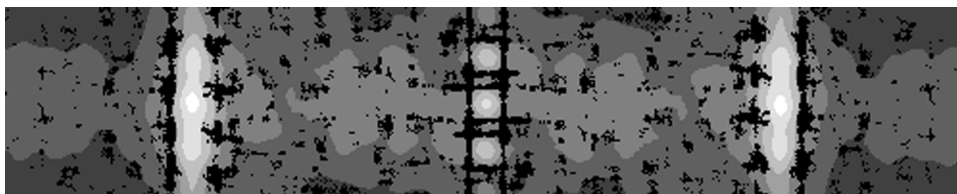
monotype garamond

The black partitions between the white intervals may be visible, but they need to be explained, equal in value, because otherwise they would change the rhythm. When the intervals of a rhythmic assembly are separated by the white intervals of a rhythmic assembly, the rhythmic composition of the white shape is the result of the combination of the black shape and vice versa. The black shape of writing is determined and regulated only by the combination of letters, there is no single measure of their size and they follow almost instinctively from the black strokes which build up each letter. This is why I place so much emphasis on the white shape in the word.



rotis sans serif light

The black partitions between the white intervals may be visible, but they need to be explained, equal in value, because otherwise they would change the rhythm. When the intervals of a rhythmic assembly are separated by the white intervals of a rhythmic assembly, the rhythmic composition of the white shape is the result of the combination of the black shape and vice versa. The black shape of writing is determined and regulated only by the combination of letters, there is no single measure of their size and they follow almost instinctively from the black strokes which build up each letter. This is why I place so much emphasis on the white shape in the word.



univers 57 condensed