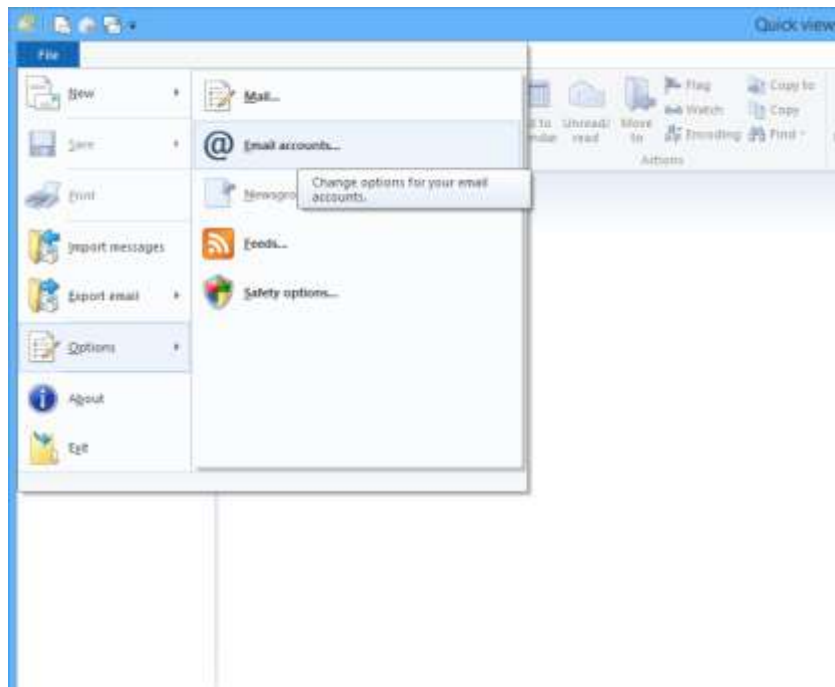
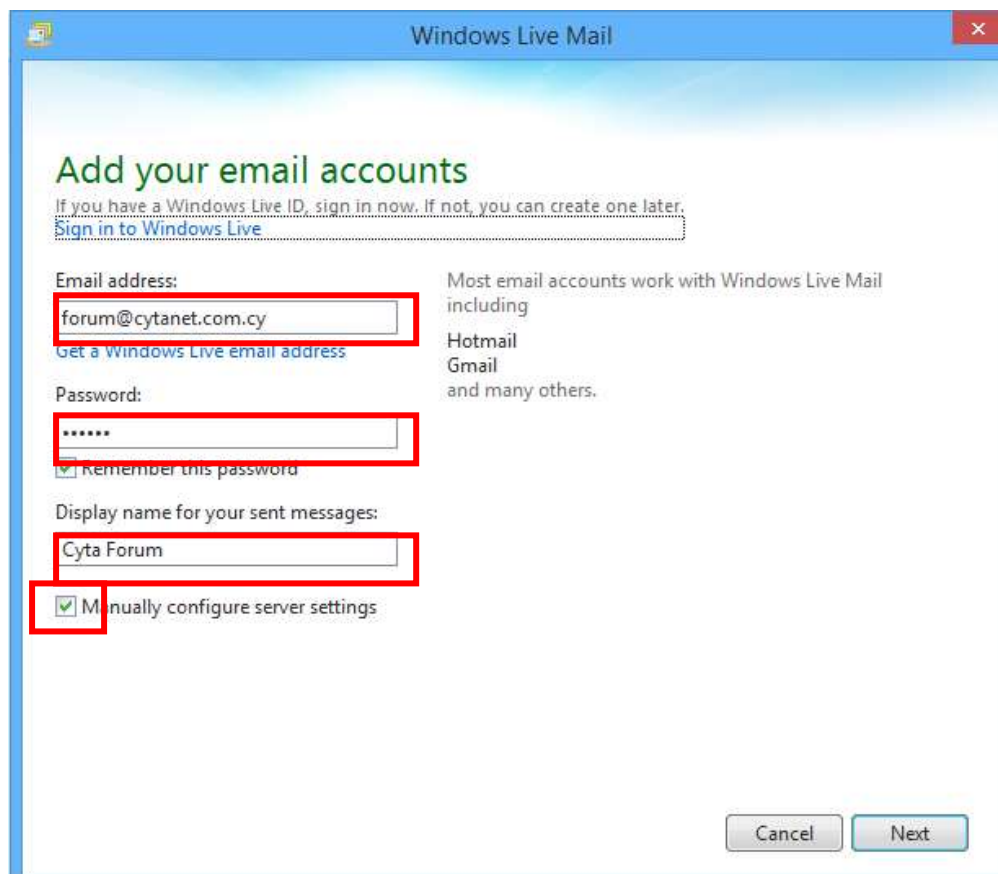


Click on **File** and then on **Email Accounts**.



In the new window we add the **Email address**, the **Password** and the **Display name** as shown in the example below.

We choose **Manually configure server settings** and then **Next**.



We choose **IMAP** and complete the Incoming and Outgoing mail server as shown below.

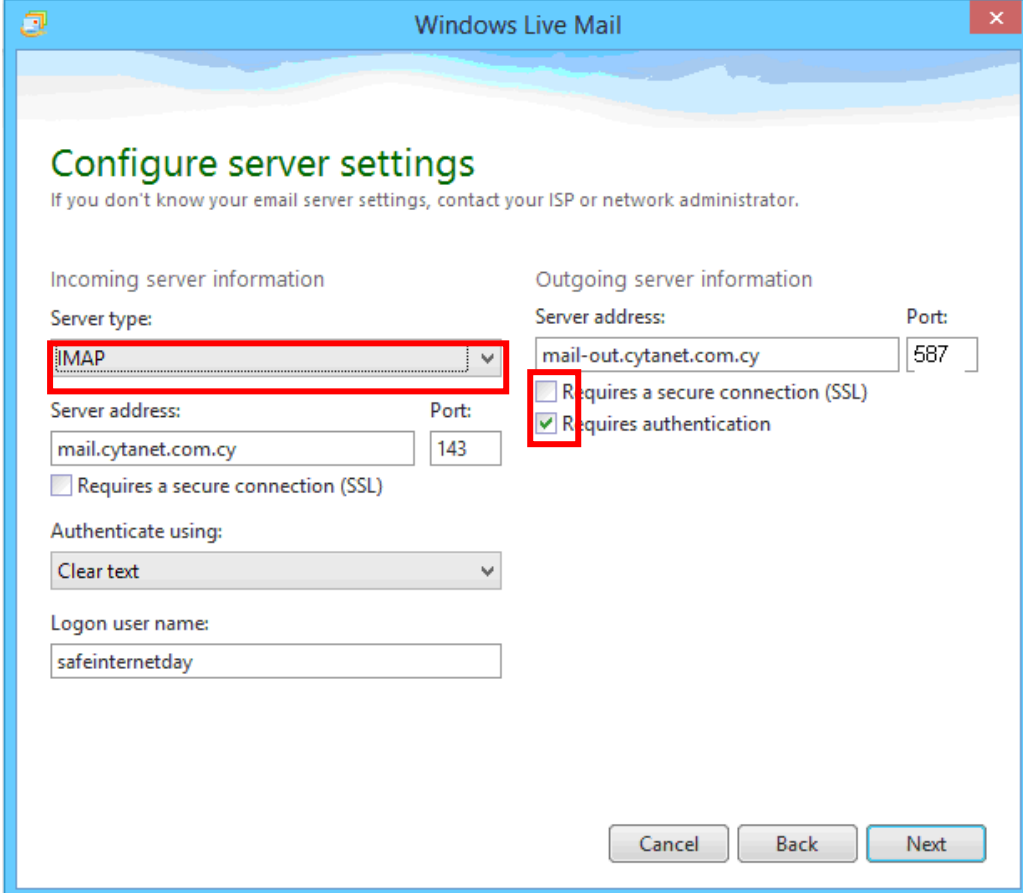
Incoming mail server address: mail.cytanet.com.cy

For **Incoming server** the port number is **143** without **SSL**.

Outgoing mail server address: mail-out.cytanet.com.cy

For **Outgoing server** the port number is **587 either with SSL or without SSL** and choose **Requires authentication**.

Click **Next**.



The screenshot shows the 'Configure server settings' dialog box in Windows Live Mail. The window title is 'Windows Live Mail'. The main heading is 'Configure server settings' with a sub-note: 'If you don't know your email server settings, contact your ISP or network administrator.' The dialog is divided into two columns: 'Incoming server information' and 'Outgoing server information'. In the 'Incoming server information' section, the 'Server type' dropdown is set to 'IMAP' (highlighted with a red box), the 'Server address' is 'mail.cytanet.com.cy', and the 'Port' is '143'. There is an unchecked checkbox for 'Requires a secure connection (SSL)'. The 'Authenticate using' dropdown is set to 'Clear text'. The 'Logon user name' is 'safeinternetday'. In the 'Outgoing server information' section, the 'Server address' is 'mail-out.cytanet.com.cy' and the 'Port' is '587'. There are two checkboxes: 'Requires a secure connection (SSL)' (unchecked) and 'Requires authentication' (checked, highlighted with a red box). At the bottom right, there are three buttons: 'Cancel', 'Back', and 'Next'.

Click **Finish**.